

# A NEW Star in the RICHARDSON GALAXY of Farm Money Makers

Wheel-Loader

BALE LOADER of Simpler, Revolutionary Design Has ONLY ONE MOVING PART!

Handles Round or Square Bales

No chains, belts, engine or hydraulic. Nothing to get out of adjustment. Large ground driven wheel delivers even loosely tied bales gently to platform within easy reach of operator. Loads round or square bales on any terrain. Continuous loading action permits faster speeds even in heavy crops. Sturdy tubular construction and grease sealed bearings make it a lifetime investment in lower labor costs.

Richardson Grain Saving Reel Attachment

EXCLUSIVE VARIABLE CAM CONTROLS FINGERS

Stops sickle run-over in leaning crops and permits safe operation close to ground. A money maker in all small grains and milo—saves fall-away heads. Easily installed—quickly adjusted; and you SAVE by converting your present reel! Economically priced.

Seitz Distributing Company Billings, Montana

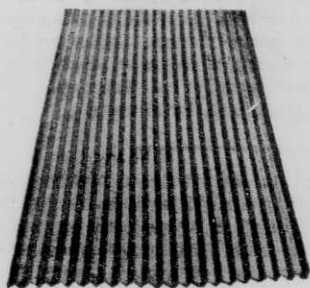
RICHARDSON-MFG Co.-Cawker City, Ks.

Please send descriptive literature on:

- ★ WHEEL LOADER
- ★ GRAIN SAVING REEL ATTACHMENT
- ★ RUBBER FINDER RAKE
- ★ COMBO SUBSOILER
- ★ FLEXO GUARD
- ★ STA KLEEN
- ★ HARD SURF. RASP BAR

NAME \_\_\_\_\_  
 ADDRESS \_\_\_\_\_  
 CITY \_\_\_\_\_ STATE \_\_\_\_\_  
 ZIP CODE \_\_\_\_\_ MFS

## GALVANIZED STEEL Corrugated Roofing and Siding



LONG LIFE—LOW COST  
 Mail coupon for free information

MIDWEST WIRE & STEEL PRODUCTS CO.  
 South St. Paul, Minnesota — Dept. A-3

Send free literature and current low prices on steel roofing, poles, nails, etc.

Name \_\_\_\_\_  
 Address \_\_\_\_\_

## PLASTIC PIPE

Get our Low Prices on Plastic Pipe and Fittings. Any Size. Special Prices on Quantity Purchases.

CARL WEISSMAN & SONS, INC.  
 360 3rd Ave. S. 3425 1st Ave. S.  
 Great Falls, Mont. Billings, Mont.

Auto Parts FOR CARS, TRUCKS NEW AND USED

For All Makes and Models  
**BILLINGS AUTO WRECKING CO.**

The largest of its kind in the Northwest  
 2202-12 First Ave. North. BILLINGS, MONTANA

better than usual in late fall and winter. The present low level of prices and a greater drop in production than usual will favor the advance.

Hatchings of egg-type chicks through May were 20 per cent less than last year. Late hatchings probably will be up slightly, but the total pullet crop will be rather sharply reduced. Even if more yearling and older hens are held over, laying flocks next fall will be appreciably smaller than a year previous.

**BEANS**—Prices probably will be fairly stable until harvest approaches. Domestic demand is shrinking seasonally, but "free" supplies are small and are being marketed slowly. CCC probably will fill any export demand. New crop prospects are mostly good.

Quotations to the trade by shippers for U.S. 1 grades f.o.b. Idaho shipping points, per cwt., are: pinto, \$8.50-8.60; Great Northern, \$6.80-6.90; Idaho, \$7.30-7.40.



IF YOU'RE A Republican, a Republican president broke the drought and a Democrat Congress brought the floods. If you're a Democrat, it's the other way about.

Looks like the young folks around here just ain't got no ambishun. None of the boys makes any effort to look like Elvis Presley, and not more'n three-four girls tries to look like Marilyn Monroe.

Hope Congress don't throw out the Soil Bank before some of us finds out what it is. This curiosity is killin' us.

Commencement season is over and I'm back to hard work. Picked up some nice money, goin' around to graduation exercises so's the orators could point to a horrible example of what happens when the risin' generation don't face life with courage, honesty and high resolve.

With so many bombers and fighter planes flyin' through the sky to protect our country, us Americans could sleep easy at night if it wasn't for the noise they make.

It's silly, sendin' up a costly satellite to tell us more about the size and shape of the earth. We already know the earth is in terrible shape and ain't big enough to hide on.

Nobody can say we lag behind the procession, here on Squawberry Flat, so all of us is kickin' like bay steers about strontium. Soon as we get time we're gonna ask what it is.

Good old Congress! Six, seven, maybe eight farm programs and the farmer is still in business, sort of. But Congress is willin' to try again.

It's a plumb hard choice for vacationers to make—whether to go to the seashore and get blistered layin' on the sand, or go to the mountains and lay under a pine tree in a bed of pizen oak.

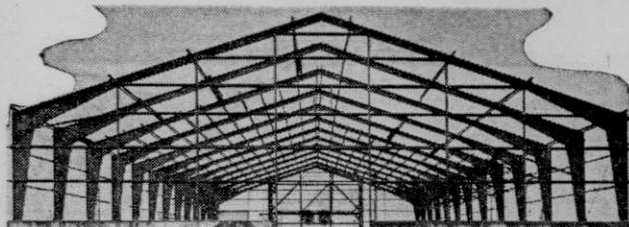
Judgin' from what the doctors and the papers say, hardly any of us would be alive today if it wasn't for the new meercle medicines. Sometimes it seems just too bad they were invented.

Mrs. Quag Tofer says it's a disgrace, the way people have come to care less about total disgrace than the scratch of a catclaw thorn.

# NOW... GRAIN STORAGE

A STEEL BUILDING DESIGNED SPECIALLY FOR

**Soulé**  
 LEADER IN STEEL BUILDINGS



Gone are the days when you buy a building that can be ADAPTED to grain storage. Now you can buy a SOULÉ All-Steel Building that has been DESIGNED specially for grain storage and can be USED for other types storage without any fuss or bother.

LOOK AT THESE FEATURES OF THE NEW



**Soulé**  
 LEADER IN STEEL BUILDINGS

GRAIN STORAGE STEEL BUILDINGS

- 40'x100'x12' with a capacity of 55,000 bushels.
- No tie-rods or other interior obstructions.
- Will not breakout around doors and sidewalls, roof will not sag.
- Sidewall sheathing will not bulge between framing members.
- Heavy gauge sheathing on roof and sidewalls.
- Can be used for machine and other storage when not filled with grain.

### LOWEST COST EVER

The cost, including erection, is approximately 7c per bushel less than other types of steel buildings of equal capacity. Includes: Double Sliding Door, Bulkhead, 2 End Louvres, 4 Light Panels in Roof, Heavy Concrete Footings and Foundation, Concrete Floor, Heavy Gauge Sheathing and COMPLETE ERECTION! We invite you to get our cost and compare!

KILBY GRAIN BINS ALSO AVAILABLE

3276, 4400 and 5133 Bushel Sizes in Stock for Immediate Delivery. Other sizes available.

SEE THESE DEALERS OR THE DISTRIBUTOR

BILLINGS Tom Koyama, 2121 Mont. A. GREAT FALLS Selstad Soil Service, West Vaughn Road  
 CONRAD Reo Motors SHELBY Walt Whirry, 309 9th Ave. S., Ph. HE 4-2596  
 DENTON Jack Rose, P.O. Box 1652

DISTRIBUTED BY

**M. M. BARKER STEEL BUILDING CO.**  
 East of Great Falls near Mahstrom Air Force Base Off-Base Housing  
 5600 THIRD AVENUE SOUTH GREAT FALLS, MONTANA



Look For This Shield of Quality ... Your Seal Of PAINT PROTECTION

CLASSIFIED GRADE 1 according to U.S. Dept. of Agriculture Technical Bulletin No. 804. The finest house paint you can buy! The guesswork is gone—you can depend on the recommended classification of the U.S.D.A. And this shield is on every case of FORMAN-FORD Grade 1 house paint.



SELF-CLEANSING — Specially developed pigments retain their "like new" color by causing dirt to be washed away with normal paint film wear.

FHA-ACCEPTED—For new construction 2-coat painting (most paints require 3 coats).

EXTRA THICKNESS—Better grades linseed oil in extra quantities means less thinner to evaporate as in ordinary house paints.

ECONOMICAL—Gives you 3-coat work in 2 coats, goes farther per gallon and preserves longer for years of "new look" service.

AVAILABLE IN WHITE, RED BARN AND 50 COLOR COMBINATIONS

A MONTANA COMPANY—Forman-Ford, Ford Co. of Montana is a LOCAL COMPANY with a factory and offices in Great Falls. It brings to Montana the years of paint manufacturing experience obtained by Forman-Ford since 1883. The very latest brand new equipment is used to manufacture these highest quality painting products.

SEE YOUR FORMAN-FORD DEALER DEALER INQUIRIES INVITED

another Better product by

**FORMAN-FORD & CO.**  
 OF MONTANA

P.O. BOX 1438

GREAT FALLS, MONTANA