

### SIMPSON TO LEAP STICKS AT DRAKE

Missouri Star to Be Central Figure in Special Events at Relay Games.

#### TO MEET WORTHY FOES

Des Moines, Ia., March 31.—(Special.)—World's Champion Bob Simpson and Challenger Waldo Ames of Illinois and Iowa's best, Roscoe Packer of Ames, will be the central figures in one of the special events at the Drake relays, April 21. It is possible that a former holder of the world record may be in the event, his entry depending upon his present collegiate standing. Other hurdlers practically certain to take part are Burke of Wisconsin and Schienberg of Purdue, the two men who compelled Ames to set a new conference record for the seventy-yard high hurdles in the annual indoor Big Nine at Evansston Saturday night.

Simpson of Missouri, the greatest hurdler of all time, is, of course, the central figure in this event. It will be his third appearance on an Iowa track. He was a member of the Missouri half-mile team in the Drake relays two years ago and probably will be a member of the same team this year, in addition to appearing in the special events. Later that same year he took part in a dual meet between Missouri and Ames and sustained the only defeat event administered by a college opponent when Roscoe Packer climbed over the high sticks and broke the tape in the lead. Last season he was the sensation of the year and continually and consistently ran the 120-yard hurdles in better than world's marks.

#### Ames is Contender.

This year Waldo Ames of Illinois, a former star of the Chicago high schools, has shown possibilities of being a possible formidable opponent of the Missouri star. He has made new amateur records for the indoor event from fifty to seventy-five yards, while his mark Saturday night was a new world's mark. He is the most graceful of the men in the event, but lacks the strength of even the less known of his opponents. However, he has been coming strong in the last year and at the present time looks to be a fit challenger for the "king of timber toppers."

Packer, the Iowa entry in the event, has not been going good in the indoor work, but may round in time to be a real factor in the local race. At the time of the Penn relays a year ago Packer made the best record ever made by an Iowa hurdler, when he won his preliminary event, but a fall put him out of the finals. That he will make an attempt to place his name at the head of all Iowa hurdlers in this, his last year in athletics, is expected and as he is a fellow with plenty of sand it is fairly certain the Iowa entry will be very much present in the new event in the Drake relays.

#### Says Farmers Should Not Be Allowed to Enlist

Chicago, March 31.—Contending that the food supply of the nation would be threatened if agricultural workers are withdrawn from the field to military camps, C. W. Holman, secretary of the National Agricultural Organization society, declared that farmers should not be allowed to enlist even if a call for 1,000,000 men is needed.

Washington, March 31.—So that the United States may not run the risk of sacrificing its scientists on the firing line, as the European belligerents have done before realizing their value behind the army, the bureau of mines is conducting a census of technical experts at the request of the council of national defense.

Persistent Advertising Is the Road to Success.

CHARACTERS IN "A RUSSIAN HONEYMOON" GIVEN BY THE SOUTH SIDE HIGH SCHOOL LAST WEEK—Left to right, Miss Bertha Hoden, the baroness; Guy Emigh, Koulikoff; Miss Sadie Rotholtz, Michalene; Miss Alta Davis, Poleska; Miss Eva Lipofsky, peasant girl; Miss Beatrice Wells, peasant girl.



### Beans by the Carload Condemned By Government Food Inspectors

#### Hominy Also Found With So Much Lye that it is Eating Through the Tin Cans.

#### KEROSENE PUT ON CANDY

E. C. Kemble, chief food inspector of Nebraska, made two more big seizures of beans today. One was a carload in the Missouri Pacific yards, which was nabbed just as the owners were about to ship it out of the city. It contains 300 bags, 49,500 pounds. The other was a batch of 300 bags in a local warehouse.

This is the wind-up of a week of great activity in Omaha by the food inspector, starting last Tuesday, when he seized 250,000 pounds of navy beans shipped to the Union Packing company here from Hammond, Ind.

Labels have been filed in the United States court against those in whose possession the beans were found. They are said to be the lowest grade of beans, scarcely more than husks and unfit for human food, unfit even for seed.

Late Friday Mr. Kemble seized 69,000 more pounds of beans, found at the Union Packing company's plant, Thirty-third and Spaulding streets, and 21,000 pounds at another warehouse. These are state seizures, because it cannot be shown that these beans entered into interstate commerce.

He also seized 1,000 cans of hominy, which examination by the state chemist showed contain such an excess of lye that it was eating through the tin of the cans.

As he was coming home from one of his seizures Mr. Kemble noticed some candy in the window of the grocery store of Harry Kavich, Sixteenth and Cuming streets. He entered and examined the candy and found it filthy and wormy. The wholesaler who had sold Kavich the candy was called up and quickly appeared on the scene. They thereupon agreed to destroy the sweets.

Under the watchful eye of the food inspector they dumped 174 pounds of

#### BEST STEER FOR FORD CARS

Auto Steer Co., Rockford, Ill.

#### Fourth Class Offices Raised to High Class

Washington, March 31.—(Special Telegram.)—Civil service examination will be held on April 28 for postmaster at Ericson, Neb.

James R. Duncan of Lincoln, Neb., has been appointed as assistant truck crop specialist in the field service of the Department of Agriculture.

The following fourth-class postoffices will become presidential on April 1: Nebraska—Brainard, \$1,000; Dakota City, \$1,000; Dunbar, \$1,000; Merriman, \$1,000; Rulo, \$1,100; Wyoming, \$1,000. Iowa—Diagonal, \$1,100.

Bee Want Ads Produce Results.

### Girls Will Plead With Young Men To Join Soldiery

At the first regular meeting of the newly-organized Girls' Preparedness club, held Friday evening at Metropolitan hall, about a dozen of the thirty-five members attended. They decided that for the present their desire to help in the national emergency will best be directed toward inducing young men to join one of the military branches. They have already secured a number of enlistments in the National Guard, and some of the girls have enrolled as yeomenettes in the naval reserve for land service in case of urgent need. Miss Louise Fillmore, 4422 Pierce street started the club.

Other young women attending Friday evening's meeting included: Alma Jensen, 4313 Pacific street; Elma Miller, 3022 Sherman avenue; Hilma and Elima Peterson, 335 Manderson street; Marguerite Ellis, 2542 Chicago street; Nina Embree, 2804 Binney

### Perry Lock Steering Wheel

a positive Theft Insurance

No two locks have keys alike. Front wheels are wild when car is locked. Ask us about it now. Phone Douglas 3217.

National Auto Accessories Co. 884-6-8 Brandeis Bldg. Omaha, Neb.

street; Ethel Crakes, 2409 Harney street; Mary Storms, Florence, and Marie Martin, 334 Manderson street.

### German I. W. W. Agitator Is Nearly Beaten to Death

Salt Lake City, March 31.—"I am going to Mexico to help the 'greasers' and the 'Dutch' whip the United States." This remark, said to have been shouted by W. Brandt, a German and member of the Industrial Workers of the World, at the Denver & Rio Grande station here today,

drew a crowd which immediately mobbed him. Brandt was knocked unconscious. He was rescued by police and placed in jail.

Repairs or Watch Cleans any Watch ALL WORK GUARANTEED S. H. CLAY 306 Naville Bldg. Third Floor 15th and Harney

# BEST LAWN HOSE

Is made by the B. F. Goodrich Co.—seamless tube. Every foot warranted.

Triton, Cascade, Whirlpool and Summit Are All Big Sellers.

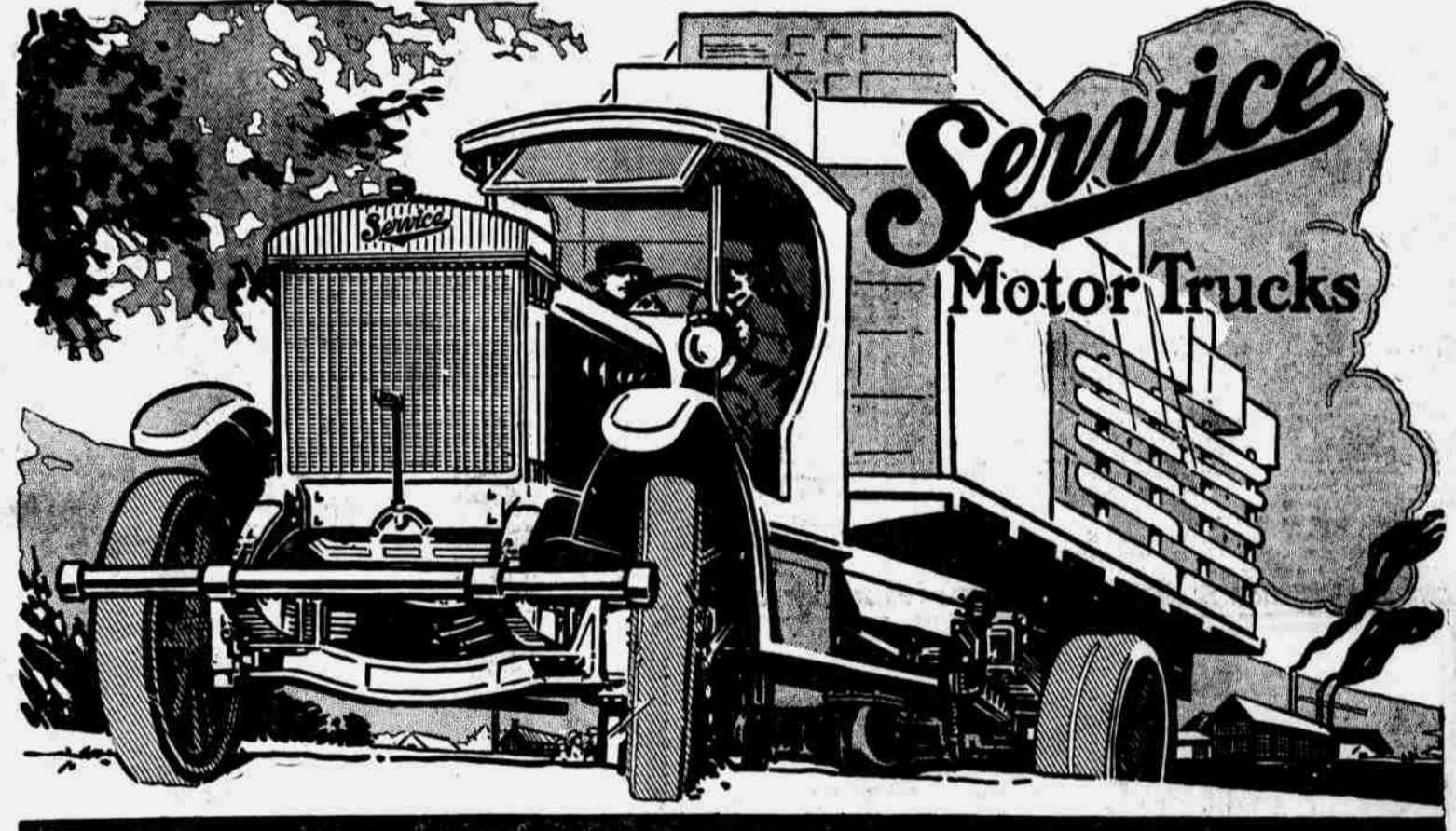
Goodrich Hose has no competitor, either in price or quality.

You know Goodrich makes "Silvertown Auto Tires"

Save Money and Buy Your Wire Cloth and Poultry Netting Now

## Jas. Morton & Sons Co.

Hardware and Tools. 1511-1513 Dodge St.



## 10 Dominant Manufacturers Build Extra Well

Ten big motor truck manufacturers stand out prominently as those whose products find biggest use among the large concerns who buy carefully. The stability of these ten manufacturers is assured—their combined capitalization is over \$250,000,000; the value of their yearly output runs high into the millions.

Each builds the best truck he can. Each offers guarantees backed by tremendous resources, tremendous manufacturing facilities; big, strong organizations, established business reputation. In essential specifications, established practice is closely adhered to. Eight build trucks in excess of four ton capacity. All build from one to four ton. Yet with all the tremendous competition, with the tremendous manufacturing efforts to build the best, SERVICE motor trucks stand out among the ten with certain definite marked advantages of big value to purchasers. Only one of the ten furnishes tires on all models that equal SERVICE in size. Only one other is built to operate with perfect safety at the same high speed.

SERVICE is the only one of the big ten using the vacuum feed system, assuring maximum fuel economy, steady uniform fuel supply. Eight use the worm drive, but SERVICE worm drive construction is the strongest that manufacturing ingenuity can devise. Nine use pressed steel frames, but in the SERVICE motor truck pressed steel frame greater width of flange, depth of frame, more uniform distribution of load assure maximum resistance to driving stress and strain and clinch SERVICE superiority. Five use motors of same power as SERVICE, yet SERVICE shows an 11% higher rating than the other four trucks of equal capacity. In chassis size SERVICE gives greater loading length than any other of ten. This means a larger loading platform—greater carrying capacity—more even distribution of load. Despite the over-size in construction SERVICE motor trucks, in each model, are notably light in weight, due to the elimination of all superfluous parts. With these points of leadership and with every other feature of construction duplicating even the most expensive of the trucks manufactured by these ten big manufacturers, SERVICE presents a remarkably low initial cost.

## 67% of Service Motor Trucks Were Re-orders in 1916 60% of Service Motor Trucks were Re-orders in 1915

Wherever big purchasers, basing their orders on proved mechanical superiority or demonstrated superior service features, are installing motor truck equipment, SERVICE motor trucks are found. And the big feature that stands out prominently in the history of

SERVICE trucks is the fact that in each year's business 60% of the sales are re-sales to satisfied customers. They are in use by the biggest corporations all over the country, in every line of work, achieving economy results and standards of operating service that make the use of the first SERVICE truck the basis for fleet orders.

## 6 Sizes of Service Trucks Wait to Do Your Work

SERVICE motor trucks are designed to meet the hardest working conditions—to stay in service day in and day out without time lost for repairs, to operate with minimum mechanical attention, with freedom from necessity for replacement. They are an engineering achievement, particularly built for big practical service. Each model is built for the special work it has to do—and range is from the 1-ton model for fast, economical moving of light loads up to the big 5-ton truck for the heaviest hauling. All have been tried out through years of usage. Each is as individual in design as though it were the sole product of the factory. This is the

only way in which proper construction can be achieved. Service trucks are the product of specialists.

1-ton truck	\$1425
1 1/2-ton truck	2100
2-ton truck	2350
3 1/2-ton truck	3100
3 1/2-ton truck (Special contractor's)	3350
5-ton truck	4150

## 13 Point Booklet

Send for our Big Illustrated Thirteen Point Booklet. It is a concise compilation of facts of tremendous importance to you in your selection of Motor Trucks.

Service Motor Truck Company Main Office and Factory, Wabash, Indiana

C. W. Francis Motor Truck Co. A. E. KERR, Manager. OMAHA

Service Station 2212 Harney Street

Show Room 2216-18 Farnam Street

Q. Why did he get to the office late?

A. Punctures galore.

Q. Is he depending upon cheap tires or seconds or unbranded stuff to deliver first-class service?

A. No—the average highly-rated tires.

Q. Then why the trouble?

A. I suppose you're like a lot of other folk—you don't know the merits of Lee Puncture Proof Tires. The stuff that puts the ordinary standard tire out of commission has no effect with the Lee armor protected tire. Call it their top-liner if you will—just try it. Try the Lee Standard Tires and the Lee Inner Tubes and then you'll know the joys and economy of real tire service. You can get Lee prices and service from

Lee Standard Tires Give more tire comfort and mileage than ever before claimed for any standard make of tires.

Lee Tubes Always stand up to the test of thickness and ruggedness. They are extremely supple, tough, resilient and long wearing.

POWELL SUPPLY COMPANY 2051 Farnam St. Phone Doug. 921.

Lee Tire & Rubber Co., Garbshöcken, Pr. Manufacturers of Rubber Goods since 1893