

County Clerk

# SIERRA COUNTY ADVOCATE

Vol. XXV,

Hillsboro, Sierra County, New Mexico, Friday, April 19, 1907.

\$2.00 Per Year

No. 4.

## WILL M. ROBINS General Merchandise

### DRY GOODS Groceries

Furniture, Mine Supplies, Hay, Grain

Agent for I. L. Gatzert & Co. Fine Tailor-Made Clothing  
White Sewing Machine Company

## Lake Valley, Hillsboro and Kingston Stage and Express Line.

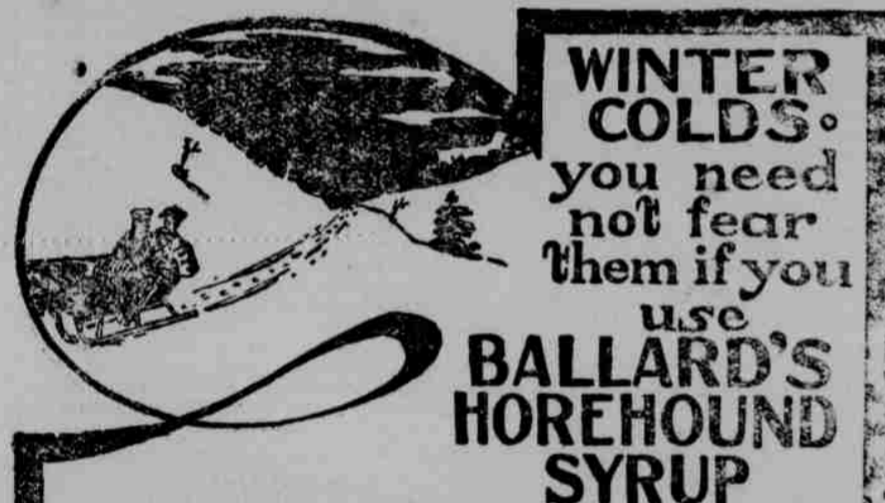
Making close connection with all trains to and from Lak

Valley, for Hillsboro and Kingston.

Quick time. New and comfortable Hacks and Coaches and Good

Stock.

FRED W. MISTER, Proprietor



**WINTER COLDS**  
you need not fear them if you use **BALLARD'S HOREHOUND SYRUP**

A cough or cold is generally a forerunner of many serious sick spells. It should not be neglected, the human breathing system is a combination of tubes and cells, which must be kept in order to insure good health.

**Ballard's Horehound Syrup CURES COUGHS, COLDS, BRONCHITIS, WHOOPING COUGH, CROUP AND ALL PULMONARY DISEASES.**

**Cured of a Chronic Cough.**

J. H. Ellis, Butte, Mont., writes: "I cheerfully recommend Ballard's Horehound Syrup to all people afflicted with chronic coughs. I suffered for years with a chronic cough which would last all winter. Ballard's Horehound Syrup effected an immediate and permanent cure."

25c, 50c and \$1.00.

**Ballard Snow Liniment Co.**

500-502 North Second Street, ST. LOUIS, MO.

Sold and Recommended by:

Geo. T. Miller, Post Office Drug Store.

### LINDAHL MINERS' IMPROVED CANDLESTICK

Saves life, limbs and time. Insures DRY MATCHES at all times. Carried in stock by all up to date supply houses. If your merchant is not in line write us and we will deliver prepaid anywhere in the U. S. for \$1.00. It is now the standard tool in all mining states and territories and in Central America. Handle is burnished brass match safe. All other parts "box tool steel" interchangeable. Send for circular.

Length, 11 3/4 inches.

LINDAHL MANUFACTURING CO., 1643 Champa St., Denver, Colo., U. S. A.

**Mining Location Blanks for sale at this office.**

**A. B. ELLIOTT,**  
Attorney-at-Law,  
Hillsboro, N. M.

**H. A. WOLFORD,**  
Attorney and Counselor at Law,  
Hillsboro, New Mexico.  
Office, one door west of Post Office.

**JAMES R. WADDILL,**  
Attorney-at-Law,  
DEMING, NEW MEXICO  
Will attend all the Courts in Sierra County and the 3rd Judicial District.

**JAMES S. FIELDER,**  
Attorney-at-Law  
DEMING, NEW MEXICO.  
Will Practice in the Courts of New Mexico, Arizona and Texas.

Office: Room 26, Armijo Building, Cor. 3rd St. and Railroad Ave. Practice in the Supreme Courts of New Mexico and Texas.

**ELFEGO BACA,**  
Attorney and Counselor at Law,  
ALBUQUERQUE, NEW MEX  
Will be present at all terms of Court for Bernalillo, Valencia, Socorro and Sierra Counties.  
Deals in good Gold, Silver and Copper Mining Properties in New Mexico.

**FRANK I. GIVEN, M. D.,**  
Office—Post Office Drug Store.  
Hillsboro - N. M.

**W. H. BUCHER,**  
Notary Public,  
Hillsboro, - N. M.

**ALOYS PREISSER,**  
Assayer and Chemist,  
Assay Office at Laidlaw Building, West of Court House.  
Hillsboro, - N. M.

**UNION MEAT MARKET**  
—COLD STORAGE—  
BEEF, PORK and MUTTON

Fresh Fish  
SAUSAGES,  
EGGS and BUTTER.

**Union Meat Market Co.**

**E. TEAFORD,**



Livery and Feed Stable.  
Hillsboro, New Mexico.

**E. E. BURLINGAME & CO.,**  
CHEMICAL AND LABORATORY  
ASSAY OFFICE  
Established in Colorado, 1866. Samples by mail or express will receive prompt and careful attention. Gold & Silver Bullion Refined, Melted and Assayed OR PURCHASED. Concentration Tests—100 lbs. or car load lots. Write for terms. 1736-1738 Lawrence St., Denver, Colo.

**Sultan's Kitchen is Fortified.**  
The imperial kitchen of the sultan of Turkey is more like a fortress than a place to cook meals, for it has an armorplated door and is fitted with locks which can be opened by only one man.

**Perhaps He Knows.**  
A girl, no matter how pretty, who bristles with the points of obtrusive hatpins is a menace to the public welfare and should be legislated against like mobs and invasions.—Fortnightly Review.

**Explorer Was Farm Boy.**  
Capt. Sverdrup, the Arctic explorer who recently added 100,000 square miles of ice to the king of Sweden's dominions, spent his boyhood days on a forest farm.

**Fined for Fast Riding.**  
Sydney A. England, of Manchester, England, was fined \$50 at Bradford for driving through the streets with a motorcycle at the rate of 70 miles an hour.

**Colossal Statue of Buddha.**  
A colossal head of Buddha has been cut out of a cliff 150 feet high in China. Tufts of grass are used for eyebrows and mustache and bushes for hair.

**Tod Sloan on the Stage.**  
Tod Sloan will shortly reappear in England in the role of jockey, but this time his course will be a revolving one on the stage of a London music hall.

**Smallest Potted Plants.**  
German women collect what are supposed to be the smallest potted plants in the world. They are cacti growing in pots about the size of a thimble.

**Dies to Oblige Friend.**  
A London furniture dealer who committed suicide left a note explaining that he had done so because a friend of his had asked him.

**Admit Your Error.**  
If you have made an error and recognize it, submit graciously. Don't try to convince your listeners in spite of the error.

**To Stop Bleeding.**  
When a cut will not stop bleeding, apply ground rice or flour. Either one is said to be very efficacious.

**Tip for Leap Year Girl.**  
If a leap year girl doesn't want to take any chances she should propose to a widower who dyes his hair.

**Biggest Farms in World.**  
The biggest farms in the world are in South Australia, where the average squatter holds 78,000 acres.

**Passing of Wedding Rings.**  
"Perhaps because rings as simple ornaments are so completely out of fashion, few married women wear the symbolic gold band at present," said a fashionable manicurist the other day. "Of the several dozen patrons who frequent our establishment in the busy season every day not one in six or seven of the married matrons is so distinguished. The fragile looking circle which of past years has gradually been losing something of its solidity is carefully preserved, no doubt, with other interesting souvenirs and keepsakes. It is seldom worn."

**Too Careless.**  
"Did you bring the engagement ring, Henri?"  
"Yes, I have it here. But fair and softy, Gwendoline. Before I place it upon your taper digit I must ask for sufficient security to cover its fair value."  
"Security, Henri?"  
"Aye, security. I have lost no less than three rings by being careless on this point. No security, Gwenny, no ring."

**Sixpence in Bullock's Stomach.**  
A sixpence of the reign of Charles I. was found in the stomach of a bullock killed recently by a Yarmouth (England) butcher.

**Canadian Railroad Subsidies.**  
Canada is called on to subsidize 43 new railroad lines, at a cost of \$9,320,000. They are to cover a length of 8,885 miles.

### The Old Santa Fe Trail.

It wound through strange, scarred hills down canyons lone,  
Where wild things screamed, with winds for company;  
Its milestones were the bones of pioneers, Bronzed, haggard men, often with thirst amon,  
Lashed on their beasts of burden toward the sea;  
An epic quest it was of elder years, For fabled fortunes or for good red gold  
The trail men strove in iron days of old.  
Today the steam god thunders through through the vast,  
While dominant Saxons from the hurtling trains  
Smile at the aliens, Mexic, Indian,  
Who offer wares, keen colored, like their post;  
Dread dramas of immitigable plains  
Rebuke the softness of the modern man;  
No menace now, the desert's mood of sand;  
Still westward lies a green and golden land.  
For, at the magic touch of water, blooms The wilderness, and where yore the yoke Tortured the toilers into ditches and mts,  
Lo! brightsome fruits to feed a mighty folk.  
—Richard Burton in the Century.

### New Mexico's Mining Prospects.

Large interests are going into New Mexico copper and the probability is that the next five years will demonstrate that this territory belongs to the famous Arizona-Sonora copper belt and will have a production dependent only on the skill and capital brought to the exploitation of the natural resources. Some organized effort should be made to interest capital and get real miners to undertake the development of the territory. If New Mexico does not leap forward during this period of mining activity and high prices it will not be because she has not the pay ore but because her people are not alive to the great opportunities. That she is at least partially awakened to these opportunities is evinced by the fact that within the past few weeks several mining companies have been organized in which people of central and southern New Mexico are greatly interested.—Mining World.

James C. Goodwin, of Tempe, Arizona, recently discovered an old map of the United States, made in 1858, on which "Arizona" appears. It extended from Yuma on the west to El Paso on the east. The northern boundary was the Gila river, the territory included being the Gadsden purchase. It took in what is now Dona Ana county, N. M., Dona Ana county being, by the way, the previous name of Arizona.

Mr. Goodwin had never heard of Arizona territory before its establishment in 1863. He therefore wondered how a map made in 1858 could have it shown. He went to Phoenix to see if he could throw any light on the matter. He found in Bancroft's history that in his message to congress, early in 1858, President Buchanan recommended the formation of a separate territory out of the Gadsden purchase, and that late in the same month Senator Gwin of California, introduced a bill to organize such a government.

The legislature of New Mexico, in February, 1858, passed a resolution favoring the measure, though recommending a north and south boundary line on the 109th meridian, and also the removal of all the New Mexico Indians to northern Arizona. The residents of the territory proposed to be included in the new territory anticipated the passage of the Gwin bill and held an election in Tucson, in which Sylvester Mowry was elected delegate to congress. The map-makers evidently anticipated the passage of the bill.—Ex.