

72 BULBS FLOWER SHOW TO-DAY SAVING SEED AT HOME

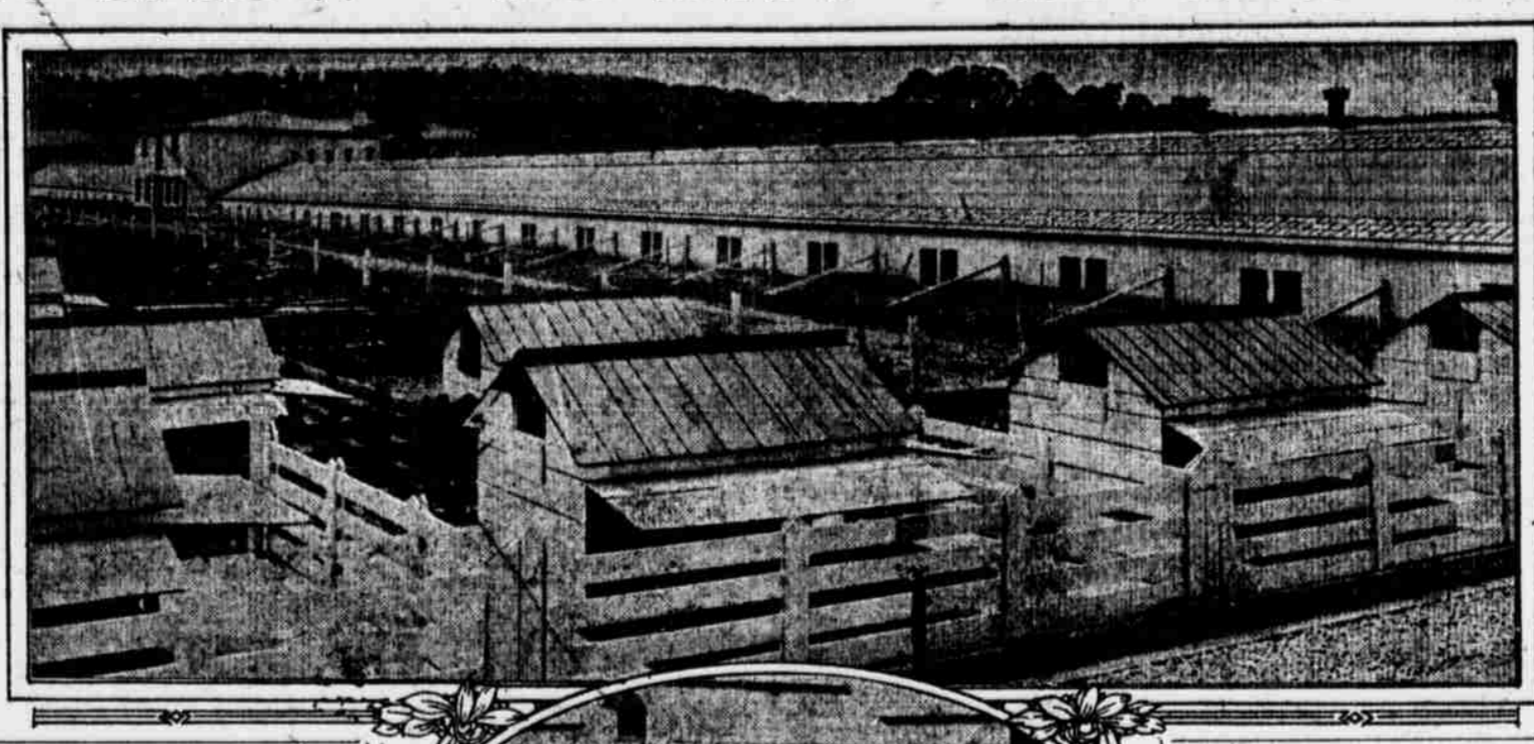
ROCKERY AND HARDY BORDER COLLECTION. These bulbs thrive in sun or shade. Once planted they flower year after year.

40 DARWIN TULIPS, \$1. The most beautiful of the tulip family, this collection consists of five named varieties...

30 Bulbs for House Culture, \$1. This collection of bulbs will give a charming decoration of bloom from Christmas until Easter.

MAX SCHLING, Inc. 24 West 59th Street, New York City.

The exhibition of the Horticultural Society of New York at the Museum of Natural History, Seventy-seventh street and Columbus avenue, will be open to-day from 1 to 6 P. M.



Individual yards and colony houses; farrowing house; gilts raised on "cafeteria" plan. The sand has helped to make it lighter and friable.

Farming Secrets!

The simplest way to cut down on labor. The most approved methods of vitalizing your soil. The experts' discoveries for growing record crops.

Told by More Than 100 of America's Greatest Farming Authorities. A thousand and one new farming discoveries have been made by men who are revolutionizing crop and livestock raising.

The Discoveries of Specialists. Just as we have the physician who specializes on one particular branch of medicine, so we have the farmer who specializes on one particular branch of farming.

A \$50,000 Work. An expense of over \$50,000 for the editorial material alone, the successful farming experiences of recognized authorities in all parts of the country have been collected and placed within the covers of Farm Knowledge—the Farmer's Own Cyclopaedia.

FREE Booklet Explains All. Farm Knowledge contains over 1,000 pages of plain, up-to-date information on all the latest methods of farming.

Chester Valley Live Stock Farm. Come to the greatest sale of pure-bred hogs ever held, regardless of breed, time, or place. For more than a year, we have been working to make this, our first great Annual Sale, a huge success.

Starts 11:00 A. M.—Rain or Shine. Come regardless of the weather; Sale and show ring will be held under cover. We are located 2 miles from Wayne or Stratford on the P. R. R. Auto-cab service at each station.

John Schepers & Co. show a collection of winter flowering begonias and an everbearing raspberry. A. N. Pierson, Inc. has a good display of chrysanthemums and roses.

STILL TIME TO PLANT BULBS. Dealers report bulb stocks going rapidly. Some are without listing a catalogue. Gardeners who have not purchased their bulbs should do so before it is too late to obtain them.

HOME SEED SAVING. Good results from home seed saving are sometimes obtained, but without the most intelligent selection and care the experiment is rarely repeated.

SAVE WOOD ASHES. Save the ashes from wood fires. Store them in boxes or barrels in a dry place until spring, when they should be spread over the garden for their high fertilizing value.

LIME IN OLD PLASTER. When a ceiling falls, as they sometimes do, there is the slight consolation that the old plaster can be used to advantage in the garden.

Protest by Letter or Wire. The Federal Horticultural Board will soon take final action to stop the importation of nursery stock into this country.

Protest by Letter or Wire. The Federal Horticultural Board will soon take final action to stop the importation of nursery stock into this country.

Protest by Letter or Wire. The Federal Horticultural Board will soon take final action to stop the importation of nursery stock into this country.

Protest by Letter or Wire. The Federal Horticultural Board will soon take final action to stop the importation of nursery stock into this country.

Protest by Letter or Wire. The Federal Horticultural Board will soon take final action to stop the importation of nursery stock into this country.

Protest by Letter or Wire. The Federal Horticultural Board will soon take final action to stop the importation of nursery stock into this country.

Protest by Letter or Wire. The Federal Horticultural Board will soon take final action to stop the importation of nursery stock into this country.

Mrs. Jenny Mans is proprietor of the East Brook Habbitry, East Foxboro, Mass., and Louise Mans Dayton is manager. They have made a success of poultry and rabbits, breeding Plymouth Rocks, White Leghorns and Belgian hares.

The Belgian Government, it is reported, has ordered 2,000 incubators from American manufacturers. If a cracked egg is first wrapped in oiled or waxed paper it may be boiled as well as if it were not cracked.

MARKET COCKERELS AT WEIGHT OF TWO POUNDS. Farmers or poultrymen will find it more profitable to market young cockerels when they reach a weight of two pounds rather than to feed the birds until late fall or early winter.

REMEDY FOR SCALY LEGS ON FOWLS. Scaly leg of poultry, a disease often noticed on fowls during the late fall and winter, may be controlled by an acaricide tested at the Ohio Experiment Station.

FARM AND GARDEN PRODUCE BY PARCEL POST. Farm produce, fruit and vegetables of all kinds, poultry, eggs, butter, pork, sausage meat, head cheese, scrapple, canned fruits and vegetables are in demand in the cities and villages.

BLACKBIRDS VALUABLE. This spring while ploughing for potatoes I was followed around the lot by a flock of blackbirds, and out of curiosity I watched them to see what they were after.

PURE BRED BERKSHIRES AT AUCTION. The Chester Valley Live Stock Farm is the largest pure bred Berkshire farm in America. It is located two miles from Wayne, Pa.

Scenes of Tramps. "Much bothered with tramps on your way?" "I was until I tacked up a sign of my gate."

CURING MEAT. The principal preservatives used in curing meat are salt, sugar and molasses. Salt preserves the meat through its astringent and slightly germicidal action.

Federal Farm Loan bonds are free of taxation both as to principal and income. The first \$30,000,000 of these bonds were taken by small investors in the main.

NEW CYCLOPEDIA OF FARMING AND GARDENING. Not so many years ago, when Chicago was further away from New York than it is now in travelling time, Richard Sears, a young man, came East from one of the more distant States of the plains and opened a small office in Chicago.

Pratts Poultry Regulator. Not a stimulant which gives but temporary results, but a dependable health-builder. It does not force but induces hens to lay because it builds them up naturally.

They're Bred-to-Lay. We offer White Leghorn pullets that carry the blood of the best of both the White and the Buff Orpingtons.

Wilburtha Poultry Farms. Will make you a profit from the start—lay when eggs are highest. Mature Leghorn pullets, now laying \$3.00 each.

Wilburtha Poultry Farms. Will make you a profit from the start—lay when eggs are highest. Mature Leghorn pullets, now laying \$3.00 each.

Wilburtha Poultry Farms. Will make you a profit from the start—lay when eggs are highest. Mature Leghorn pullets, now laying \$3.00 each.

Wilburtha Poultry Farms. Will make you a profit from the start—lay when eggs are highest. Mature Leghorn pullets, now laying \$3.00 each.

Wilburtha Poultry Farms. Will make you a profit from the start—lay when eggs are highest. Mature Leghorn pullets, now laying \$3.00 each.

Wilburtha Poultry Farms. Charles J. Flisk of Harver Flisk & Son is owner of the Wilburtha Poultry Farms, which assures absolutely fair and businesslike dealings.

Water-Flowering French Narcissus. For Holiday Bloom. Planted in damp moss or gravel and water, produce large white trusses.

BULBS. Still some left. Now is the time to plant them. 15 Double Dutch, \$1.00; 15 Double Dutch, \$1.00; 15 Double Dutch, \$1.00.

VERMONT PURE MAPLE SYRUP. 12 1/2 gal. half gal. \$1.00. Pure Honey, 2 1/2 lb. can. \$1.25. Vermont Maple Syrup Co., Washington Market, New York.

PIGS AND PIGS. Sucklings for Thanksgiving. Also a few choice Duroc Boars. BRAE BURN FARM, Gaylardsville, Conn.

Pigs and Rabbits. Suckling Pigs and Breeding Stock. Hares—Belgian, Flemish and New Zealand Red. Pedigreed and Utility. Rabbit Guide of Full Instructions, 25c.

More Eggs Less Feed. Get lots of eggs now while prices are high. Prevent feed waste due to sluggish or imperfect digestion.

Pratts Poultry Regulator. Not a stimulant which gives but temporary results, but a dependable health-builder. It does not force but induces hens to lay because it builds them up naturally.

They're Bred-to-Lay. We offer White Leghorn pullets that carry the blood of the best of both the White and the Buff Orpingtons.

Wilburtha Poultry Farms. Will make you a profit from the start—lay when eggs are highest. Mature Leghorn pullets, now laying \$3.00 each.

Wilburtha Poultry Farms. Will make you a profit from the start—lay when eggs are highest. Mature Leghorn pullets, now laying \$3.00 each.

Wilburtha Poultry Farms. Will make you a profit from the start—lay when eggs are highest. Mature Leghorn pullets, now laying \$3.00 each.

Wilburtha Poultry Farms. Will make you a profit from the start—lay when eggs are highest. Mature Leghorn pullets, now laying \$3.00 each.

Wilburtha Poultry Farms. Will make you a profit from the start—lay when eggs are highest. Mature Leghorn pullets, now laying \$3.00 each.

Wilburtha Poultry Farms. Will make you a profit from the start—lay when eggs are highest. Mature Leghorn pullets, now laying \$3.00 each.

Wilburtha Poultry Farms. Will make you a profit from the start—lay when eggs are highest. Mature Leghorn pullets, now laying \$3.00 each.

Wilburtha Poultry Farms. Will make you a profit from the start—lay when eggs are highest. Mature Leghorn pullets, now laying \$3.00 each.

Wilburtha Poultry Farms. Will make you a profit from the start—lay when eggs are highest. Mature Leghorn pullets, now laying \$3.00 each.