

THE PIOCHE RECORD

Issued Every Saturday

LEWIS H. BEASON Editor and Proprietor

Subscription, One Year, by Mail \$2.50
Six Months, by Mail 1.50

ADVERTISING RATES.

Display advertisements are charged for at the rate of \$1.00 per inch per month. One change per month without extra charge. Single insertions, 50 cents per inch. Reading notices, set in 10-point type; 15 cents per line first insertion; 10 cents per line each succeeding insertion. Locals set in 12-point black face type, 20 cents per line first insertion; 15 cents per line each succeeding insertion. One price to all and no deviation.

Entered at the Postoffice at Pioche, Nevada, as second-class matter.

Official Paper of Lincoln County

WALTER GARDNER HERE.

Representative of American Metal Co., Sees Pioche Mines

Walter Gardner, assistant to Otto Sussman, western representative of the American Metal Company with headquarters at Salt Lake, was in camp several days this week and spent the time here in examining the Prince Consolidated, Mendha and Day mines, all of which he pronounced properties possessing great merit. "I spent considerable time in the Prince Consolidated," said Mr. Gardner just before he left his hotel for the train yesterday morning, "and I have no hesitancy in making the assertion that the Prince Consolidated is one of the most wonderful mines I have ever visited. In all candor, I believe it to be one of the very great mines of the world. But I was also very much impressed with both the Day and Mendha properties; but I did not see as much of them as I did of the Prince Consolidated."

"It appears to me that Pioche has a wonderfully bright future in a mining way, the camp ought to and I believe it will, move to the front at a very rapid pace."

Mr. Gardner declared that his trip to Pioche had no particular significance attached to it; that the object was merely to obtain a general idea of the camp and its possibilities as a future producer of ore. He said he was on his way home from a trip to Mexico and took advantage of the opportunity to stop off enroute.

The American Metal company controls several smelting plants, which are located in Colorado, Kansas and Oklahoma.

HORN SILVER DISTRICT.

Geological Survey Issues Bulletin On Esmeralda County Region.

The Horn Silver mining district, in Esmeralda County, Nev., is the subject of a short report by F. L. Ransome, in the United States Geological Survey's Bulletin 380, entitled "Contributions to economic geology, 1908, Part I." The town of Horn Silver, 26 miles southwest of Goldfield, stands at an altitude of 5,900 feet above sea level on a gentle slope that opens northward into a broad desert valley and is enclosed on other sides by hills. The principal mineral deposits lie southwest of the town, within a distance of a mile, and are developed mainly by a single mine, from which shipments of ore aggregating in value about \$40,000 were made in 1908. The valuable contents of the veins are native gold and chloride of silver.

Mr. Ransome's report is included in 380, numbered 380-A, which may be obtained on application to the Director of the Survey at Washington.

NOTICE TO CREDITORS.

IN THE FOURTH JUDICIAL DISTRICT COURT IN AND FOR THE COUNTY OF LINCOLN STATE OF NEVADA.

L. F. PEER, Plaintiff, vs. NEVADA CENTRAL GOLD & COPPER COMPANY, a Corporation, et al., Defendants.

Notice is hereby given by the undersigned, Receiver of the Nevada Central Gold & Copper Company, a dissolved corporation, to the creditors of, and all persons having claims against, the said dissolved corporation, to exhibit them, with the necessary vouchers, within four months after the first publication of this notice, the said Receiver, at his office in the store room of the A. S. Thompson Co., at Pioche, Nevada, the same being the place for the transaction of the business of said dissolved corporation.

Dated Pioche, Nevada, June 9th, 1909. CHAS. A. THOMPSON, Receiver of Nevada Central Gold & Copper Company, a dissolved corporation.

First publication, June 12. Last publication, July 3.

NOTICE FOR PUBLICATION.

Serial 01766.

Department of the Interior, U. S. Land Office at Carson City, Nevada, June 5, 1909.

Notice is hereby given that Isaac Barton, of Caliente, Nevada, who, on Dec. 30, 1907, made Desert Land Entry No. 522, Serial No. 01766, for NE 1-4 SE 1-4, Section 10, Township 4 South, Range 67 East, Mount Diablo Meridian, has filed notice of intention to make final proof, to establish claim to the land above described, before the County Clerk of Lincoln county,

at his office, at Pioche, Nevada, on the 22nd day of July, 1909.

Claimant names as witnesses: Carrie Barton, Amos Gibson, Chas. Christensen and C. P. Christensen, all of Caliente, Nevada.

LOUIS J. COHN, Register.

First publication, June 12. Last publication, July 17.

NOTICE FOR PUBLICATION.

Serial 01767.

Department of the Interior, U. S. Land Office at Carson City, Nevada, June 5, 1909. Notice is hereby given that Carrie Barton, of Caliente, Nevada, who, on Dec. 30, 1907, made Desert Land Entry No. 523, Serial No. 01767, for NE 1-4 SW 1-4, Section 10, Township 4 South, Range 67 East, Mount Diablo Meridian, has filed notice of intention to make final proof, to establish claim to the land above described, before the County Clerk of Lincoln county, at his office, at Pioche, Nevada, on the 22nd day of July, 1909.

Claimant names as witnesses: Isaac Barton, Amos Gibson, Chas. Christensen and C. P. Christensen, all of Caliente, Nevada.

LOUIS J. COHN, Register.

First publication, June 12. Last publication, July 17.

NOTICE OF RECEIVER'S SALE.

IN THE FOURTH JUDICIAL DISTRICT COURT IN AND FOR THE COUNTY OF LINCOLN, STATE OF NEVADA.

L. F. PEER, Plaintiff, vs. NEVADA CENTRAL GOLD & COPPER COMPANY, a corporation, J. A. DENTON, R. D. MONTGOMERY, B. F. CREECH and J. G. BROWN, Defendants.

Notice is hereby given that in pursuance of an order of the Fourth Judicial District Court of Nevada, made on the second day of June, 1909, in the above entitled action, the undersigned, the receiver of the property of said defendant Nevada Central Gold & Copper Company, will sell at private sale, to the highest bidder, for cash, gold coin of the United States, and subject to confirmation by said District Court, on Thursday, the fifteenth day of July, 1909, at 12 o'clock M. at the office of said receiver in the store room of the A. S. Thompson Company, in the town of Pioche, County of Lincoln, State of Nevada, all the right, title, interest, and estate of the said Nevada Central Gold & Copper Company, a corporation, at the time of its dissolution on the 3rd day of June, 1909, and all the right, title, and interest that the said estate has, by operation of law or otherwise, acquired other than or in addition to that of the said Nevada Central Gold & Copper Company at the time of its dissolution, in and to all those certain mining claims situate in the Bristol Mining district in the County of Lincoln, State of Nevada, and more particularly described as follows:

All of the Central, Monte, Side Hill, Badger, Oxide, Snow Storm, and Beauty mining claims, the certificates of location of which are duly recorded in Book 2 of mining notices now in the office of the County Recorder of Lincoln County, State of Nevada, and are recorded in said book at pages 97 to 100, inclusive, which said records are made a part of this description for purposes of reference.

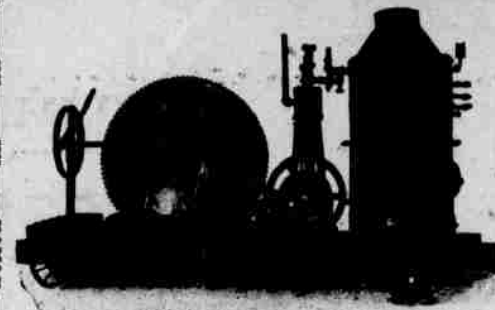
Also, there will be sold at said time and place, all of the personal property belonging to said defendant Nevada Central Gold & Copper Company, CHAS. A. THOMPSON, Receiver of the Nevada Central Gold & Copper Company.

Jesse Simmons, Attorney for the Receiver.

Dated at Pioche, Nevada, this 5th day of June, 1909.

First publication, June 12. Last publication, July 10.

New Building Operations



will require a good deal of concrete. To build economically of concrete you need to mix economically, and the best way to mix economically is to use

THE RANSOME CONCRETE MIXER.

It was the first successful mixer and is still ahead of all others.

We carry them in stock and can equip them with steam, gasoline and electric power.

The Mine & Smelter Supply Co.,

Write for Ransome Handbook

Salt Lake City, Utah.



Submits To Operation.

Mrs. Henry Lee underwent a critical surgical operation at the Duckworth hospital this week. Late reports from her bedside indicate that she is rapidly regaining her health.

JOB PRINTING AT THE RECORD OFFICE

The RECORD office is the best place in southern Nevada to get job printing done. Neat work and moderate prices.

We kindly ask a chance to figure with everyone contemplating building of any kind. We believe we can interest you. Our stock isn't the biggest in the world, but we aim to keep it well selected and in good condition.

THE L. E. SHELTON COMPANY Lumber and Its Kindred

CARMAN'S

CANDIES CIGARS STATIONARY Postoffice Building, Pioche, Nevada

If you want ice cream, go to the Vienna bakery. Best place in town.

Mines Bought and Sold

E. F. FREUDENTHAL

Office: Pioche, Nevada

Contractors and Builders

If you anticipate building, see the PIOCHE SUPPLY & CONSTRUCTION COMPANY.

Our Building Staff has a world-wide

EXPERIENCE IN ALL LINES

The Pioche Supply & Construction Co.

WM. K. MOORE, Manager,

HARRY D. JACKSON, Secy.

Office, Pioche Street.

A. S. THOMPSON Co.,

Wholesale and Retail Dealers

General Merchandise

Hardware Tinware Glassware Hay Grain Flour
Pest Powder Cans Gents' Furnishing Goods Confectioneries
Patent Medicines Wines Liquors Cigars

Steel and Other Mining Supplies

Agents For Standard Gas Lights also Agents for Pabst Beer

Pioche Livery Stable

First Class Livery and Feed Stable

Also Dealers In Hay and Grain.

Freight and Express Delivered.

Service on telegraphic orders will receive prompt attention

Our Motto-"Your Wants Our pleasure To Fill."

Culverwell & Coxe, Props.

Pioche

Meadow Valley Street

Nevada