

SAFETY, UTILITY, CONVENIENCE, FEATURES OF NEW THEATRE

**Medford Will Soon Have Play House
Constructed Which Will be Modern
and Comfortable in Every Way as
Well as Safe.**

**Equipment of Stage Such as to Make
It Possible to Stage All Full Shows
on the Road.**

Safety, utility and convenience. These have been the three things which Dr. Page and Architect Power have kept chiefly in mind in constructing the new Page Theater. Although there has been no attempt at elaborate decorations, the simplicity and harmony of the color scheme of the auditorium are excellent. The general tone is a pale blue gray, shading to a light pearly gray on the lower walls, brightened by high lights of old rose and old gold, and enriched by old rose draperies, the entire scheme having as a base the deep mahogany tone of the furniture.

However, the matter of decoration has been subordinated to the paramount ones of safety and utility. No effort has been spared which would help make this theater a complete play house in every respect, both as regards the production and the enjoyment of the largest theatrical performances. The auditorium is designed upon what is now known as the "intimate plan," the floor plan, lines and slopes bringing every seat close to the stage and giving every one a clear view of the entire stage. The lighting will have a bright but soft effect, and the acoustics are exceptionally good. In fact, it is possible even now, with neither scenery nor seats installed, for one at the extreme top of the balcony to carry on a conversation in an ordinary tone with persons on the stage.

House Is Safe.
As for the mechanical features, the most important are the precautions taken to prevent danger in case of fire. In the first place, there is not an inch of exposed electric wiring in the entire building, even the switch panels and the connections with the main switch board and dimmers being entirely enclosed in steel. The asbestos fire curtain will be hung on steel cables, and this, together with the solid brick proscenium wall and steel covered doors closing every opening through this wall, will make a barrier between the stage, which is the only place a fire could start, and the auditorium. This barrier will be absolutely impenetrable by fire for at least a half hour, during which time the house could be emptied several times over through the numerous exits, all of which are provided with emergency lights and are so arranged as to open freely from the inside. The danger from possible panic is minimized by the fact that stairs have been practically done away with, and gentle slopes provided to their place. In fact, there is not a single step on the lower floor, and the main balcony entrance and exit is a wide incline sloping gradually upward to the center of the balcony, and there opening into a broad aisle which extends clear across the building from wall to wall. In addition to these protections, the stage is provided with large vents or openings, the coverings of which are kept closed by fusible fastenings, which will give away when a dangerous degree of heat is reached, causing the vents to open and create a strong current of air away from the front part of the house, and effectively prevent all smoke and gases from reaching the audience. The entire house is also fully equipped with fire hose, already connected, and with stand-pipes.

Stage Equipment.
The stage equipment is up to the highest standard, and it will be possible to present the largest shows on the road complete in every detail. In the matter of lighting there is nothing lacking. About 800 tungsten lamps, of from 20 to 150 watts each, will be installed, with all the necessary colored lights and connections to produce the most complicated light effects, such as fire light, moonlight, dawn, etc., and with the complete switchboard appliances and dimmers, such effective illusions as the gradual change from night or moonlight through the varying hues of the sunrise to full daylight can be produced so realistically as to almost "deceive the eye." Plugging boxes and stage pockets are also provided, so that there will be no difficulty in producing any desired flood light or spot light effects. Simply as a basis of comparison, it is worth noting that the footlights in the old Medford Theater contained 24 sixteen candle power lamps while the corresponding installation

in the Page comprises 160 twenty watt tungsten.

Installing Scenery.
As far as the scenery is concerned, it is sufficient to state that it was produced in the Grabach studio, and the installation of the asbestos curtain, and the rigging of the "grid" are now under way under the same direction. Some idea of what this means may be gathered from the fact that the asbestos curtain requires 600 pounds of weights to counter-balance it, and the rigging includes over two miles of manila rope.

The convenience and comfort of the performers, which have such a great influence on the character of the production, has not been a minor issue. The dressing rooms are all neatly finished, equipped with running hot and cold water and steam heat, and each room has an outside window.

Dr. Page has announced that if no accident prevents it, the house will be opened to public inspection sometime during the coming week to be announced later, and in that event, no one should fail to take advantage of the opportunity to look it over.

DONALD WANTED TO MAKE IT MEDFORD

There is a good story connected with Anderson's recent visit at his home at Vancouver, Wash., says the Portland Oregonian. Dick Donald, his manager, was much disgusted with the lukewarm reception accorded Buddy when he returned home and exhibited his skill behind the footlights.

"Just say for me," said he to a man from the Oregonian, "that from now on everything goes out 'Bud Anderson from Medford, Ore.' Make it as strong as you like. They have treated him shabbily here, while Medford really appreciates the boy."

That night at 10:30 the following conversation ensued over the telephone. Donald talking from Vancouver:

Ting-a-a-aling.
"Hello! Sporting editor Oregonian?"

"Yes."
"Well, this is Dick Donald, Bud Anderson's manager, at Vancouver. Say, kill that item about Medford, will you? It will get me in awfully bad."

"Why? What's the stunt?"
"Well, you see Bud's friends got together tonight, stormed the theater and presented him with a silver loving cup. Don't run that story, please."

"All right."
Business of hanging up receiver and wielding the indigo pencil.

NEW PASTOR FOR FREE METHODISTS HERE

Rev. Bradley of Spokane, who was recently elected to take charge of the Free Methodist church of this city, has arrived in the city and will preach his first sermon in this city Sunday, taking as his topic, "Practical Religion."

Rev. Bradley comes very highly recommended and will be given a warm welcome in local church circles.

Arthur Hammerstein has engaged Schmitz Edwards for an important role in "High Jinks", a new farce comedy which he will present in Chicago in the fall. It is by Otto Hauerbach and Rudolf Friml.

KILLS EVERY Catarrh Germ

**BALSAMIC AIR; NATURE'S OWN
REMEDY THAT IS GUARAN-
TEED TO END CATARRH**

If you, Mr. Catarrh Victim, could only take one good look into your nose and throat and see the filth and the raw sore spots that are caused by germs of catarrh you would secure a HYOMEI outfit this very day and start at once to destroy the cause of nose and throat villain.

Booth's HYOMEI is a germ killing air which when breathed through a small inhaler or in vapor form begins at once to drive out all mucus and bring the membrane back to a normal, clean, healthy condition. Complete outfit includes Inhaler, \$1. Extra bottles if later needed, 50 cents, and money back from Chas. Straag if dissatisfied. Just breathe it—no stomach dosing.

JOHN MITCHELL, FAMOUS LEADER OF MINERS



John Mitchell, the noted labor leader, and one of the few who have not been denounced by capitalists as agitators, has become a political football in New York State, and is being kicked around from Governor William Sulzer to Charles F. Murphy, boss of Tammany Hall, and back again. Tammany Hall, which all through its career has made it a habit to enter to labor leaders, has actually trampled on one of the most prominent of them. However, this is not because any one in that organization has objection to Mitchell—Tammany would be glad to have him within the organization.

But Governor Sulzer and Murphy are now in open warfare. The governor nominated Mitchell for state commissioner of labor without the endorsement of the leaders of his party. He named some others for office who were disliked by leaders. Thus, Murphy, who controls the state senate, has seen to it that the governor's nominations were rejected. Mitchell was a mere political victim. Rather than give in to the governor Tammany took the chance of alienating the thousands of friends Mitchell has among organized labor men of New York.

Hirsh-Wickwire Co.'s Hand Tailored Clothes

are designed to meet your most exacting requirements in style, fabric and workmanship.

**None Better
Ready to Wear**

We recommend them to you because we knew you will be thoroughly satisfied after having worn a suit. Come in and see our handsome new models 63 and 55A—today! Priced right \$20 to \$30

Straw hats, Panamas, Summer underwear galere at prices you will be glad to pay.

We are not anticipating sales.

Model Clothing Co.

AFTER THE FIRE

You will find it extremely convenient if your insurance has been placed in a company which pays its losses promptly, and in full. I have no other kind.

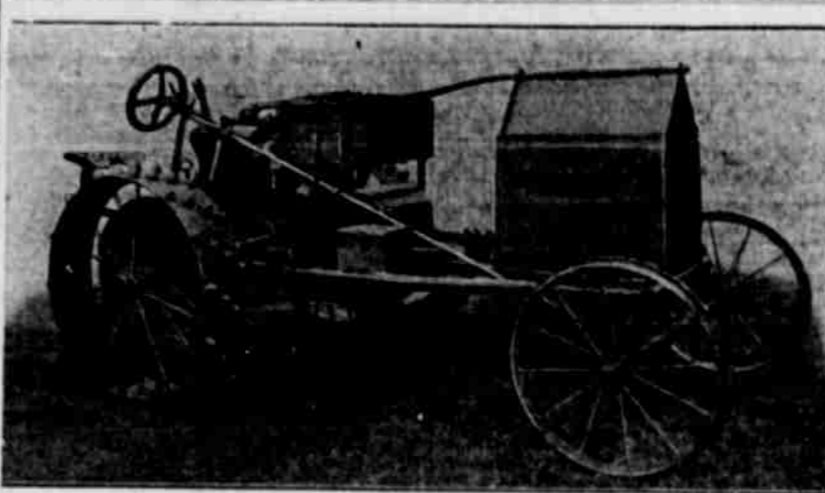
R. H. McCurdy
401 M. F. & H. Bldg. Phone 349

BALLARD CONFIRMS REPORT OF LOSS AT WATSONVILLE

Professor P. J. O'Gara is in receipt of a letter from W. S. Ballard of the department of agriculture in which the reports of heavy loss by frost in the Watsonville apple district are confirmed. According to Mr. Ballard the Pajaro valley will ship less than 1000 cars of fruit this year, while last year they shipped over 5000.

Mr. Ballard comments at some length on the carelessness of the growers in that district. "Although a few fires would have saved them, and a fully equipped weather station is established there, every one went to sleep and no warning was given. The mercury only dropped to 39, but that was enough to wipe them practically out. It would have been an easy matter to save the crop."

Mr. Ballard states further that the drought is also working a hardship on non-irrigated lands.



**CUT DOWN COST OF PRODUCTION, CUT OUT
HORSES AND MULES, USE THIS DENNING TRAC-
TOR, 3500 LBS., 24 H. P., \$1200.00.**

CHAS. TSCHIRGI
R. F. D. NO. 3. PHONE 67-J-2

SHORTYITES TO PLAY BALL TOMORROW

The "Shortyites," in other words Claude Miles' aggregation of pill heavers will meet a team from Talent on the local grounds Sunday afternoon. An endeavor is being made to give Medford a real ball team and fans should support them more by turning out. Games are to be arranged later with the undefeated Central Point team, Klamath Falls, Weed, Yreka and the O. R. W. & N. team.

The line up for Sunday follows: Catchers, Hill and Grey; pitchers, Hurd and Phillips; infielders, Wilkinson, Scholtz, Coffeen, Horton and Miles; outfielders, Isaacs, Antle, Gill and Holtz.

Hurd is a former University of Oregon star. Phillips has pitched two games this season without being scored on.

The team will be dolled out in new suits. Ewing, the sporting man, made this possible.

This is the fifteenth consecutive year on the same club for Isaacs, Wilkinson and Miles, with Antle, Hill and Scholtz five years.

PAGE THEATRE

EXTRA ORDINARY ATTRACTION

Monday Evening, May 19

Charles Frohman Presents

MAUDE ADAMS

And Original New York Cast in Her Most Famous Success

PETER PAN

By J. M. Barrie, Author of "The Little Minister"

FOR PARTICULARS PHONE 418

I have three sworn enemies

the drunkard, the heavy drinker, and the man who craves rough, strong, high-proof whiskey.

Cyrus Noble—mild—pure

W. J. Van Schuyver & Co., General Agents
Portland, Oregon



This monogram stands for all you can ask in a motor car

TIME TELLS--or things that Words Won't tell

There are some things about a motor car that words won't tell. Words are simply labels—and it is one of the shortcomings of our language that words don't always express the difference between things.

For instance, the same words are used to describe motors and motor sizes. In words, two motors of "4 1/4-inch bore" and "5 1/4-inch stroke" are the same. But between them there may be a hundred differences. Differences in power; in economy; in smoothness; in reliability. Words won't tell those differences. Even blue prints won't.

And so on all through the car. "High-grade bearings," "springs of finest quality," "channel section steel frame"; "full floating rear axles." All cars have them, it seems from the announcements. But the differences which we know to exist in the cars themselves words won't tell.

BUT TIME TELLS

Time is the great teller of truth. Time tells the difference between good things and ordinary things. Time gives the real verdict on books, pictures, buildings, men—and motor cars. Time brings out the differences that cannot be seen on the surface—the differences that words won't tell.

Please bear that in mind in choosing your motor car. You are not buying it for a year only—but for five, six, eight years—or maybe more.

Perhaps several cars look about alike to you now. Their specifications, motor sizes, wheels, tires, axles and equipment read about the same. But look for the unseen differences—the differences that will be apparent with use.

How will you know? Well, one way is

to look over the list of cars built five or six years ago. Note the cars built then that are still running and giving satisfaction today. You will find among them lots of Chalmers cars.

Here are ten Chalmers cars which have been driven more than 1,000,000 miles—an average of over 100,000 miles each:

Owner and Address	Mileage
Fred Roberts, Corpus Christi, Tx.	80,000
Geo. Stump, Independence, Kas.	140,000
Louis Pacheco, Oakland, Cal.	122,000
Dr. F. S. Catbort, Kingman, Ind.	75,000
A. D. Williams, Buffalo, N. Y.	100,000
W. H. Caffery, Kansas City, Mo.	125,000
J. D. Hand, Las Vegas, N. M.	100,000
E. W. Gardiner, Amsterdam, N.Y.	78,084
R. L. Holt, Burlington, N. C.	120,000
W. C. Kramer, Joplin, Mo.	75,000
	1,015,084

And at the Chalmers factory we have records of many more cars which have been driven 25,000 to 50,000 miles and are still giving satisfaction.

Time has told the difference between these cars and less efficient ones. And so you can feel absolutely safe in selecting a Chalmers.

YOUR CHALMERS IS WORTH \$1000 MORE BUT COSTS ONLY \$300 TO \$500 MORE

Human ingenuity and ability simply can't build as good a car to sell for \$1000 to \$1500 as can be built to sell for \$1300 to \$2500.

You know you can't get an all wool tailor-made suit for the price of a ready made semi-wool suit. And you can't get a really good automobile for the price of a cheap automobile.

Values seek their levels—in automobiles as in everything else—50,000 buyers would not every year pay the difference for high quality, medium priced cars of various makes, if they were not worth the \$300 to \$500 extra which they cost.

You know, of course, you would rather have the better car. If its price and the price of the cheaper car were the same you wouldn't hesitate a minute.

The only thing that keeps you from signing the order for the better car is simply the writing of the check for a few hundred dollars more. That's all.

DIFFERENCE IN PRICE DOESN'T EXPRESS DIFFERENCE IN VALUE

Once you have signed the check—made the decision—you will forget the money. Here's the proof. Just sign the check. Then the first question you will ask the salesman will be "How soon can I get the car?" Just that. You'll forget the few hundred dollars as soon as you have placed your order.

But the car you buy you can't forget. You'll have that with you every day, and unless it is a good car you will find it mighty' nuch on your mind every day.

The difference in cars is only partly expressed by the difference in price. The real difference is the difference in value. A genuine quality car will cost you only \$300 to \$500 more than a cheap priced car. It will be worth fully \$1000 more—in the service and satisfaction you get out of it. This isn't theory; it is a fact as any man who has owned automobiles for five years will tell you.

Do not let the supposed "saving" of \$300 to \$500 in the price of a cheaper car blind you to the greater value you can get in a Chalmers. Decide now.

Perry L. Ashcraft, Jr., Agent

MEDFORD GARAGE

MEDFORD, ORE.

PHONE 418