

Daily Astorian.

JOHN T. LIGHTER, Editor. Telephone Main 661.

TERMS OF SUBSCRIPTION.

DAILY. Sent by mail, per year \$10.00. Sent by mail, per month \$1.00. Served by carrier, per month \$0.30.

SEMI-WEEKLY. Sent by mail, per year, in advance \$5.00. Postage free to subscribers.

All communications intended for publication should be directed to the editor. Business communications of all kinds and remittances must be addressed to "The Astorian."

The Astorian guarantees to its advertisers the largest circulation of any newspaper published on the Columbia river.

Advertising rates can be had on application to the business manager.

TIDE TABLE—August, 1899.

Table with columns for DATE, HIGH WATER, LOW WATER, and various tide measurements for different days of the month.

his letters to his wife was sold out almost on the day of publication. No one had thought that a book of this character would meet with such an unusual and immediate success...



Thousands of men in lonely homes call up the pictures of the loved and lost ones, who might still be happy husbands with healthy babes prattling at their knees...

The anti-expansionist is fighting against fate in his opposition to the course of events now covering the United States into one of the greatest and most influential power of the earth.

J. D. Bridge, editor and proprietor of the Democrat, Lancaster, N. H., says: "I would not be without One Minute Cough Cure for my boy, when troubled with a cough or cold."

Some of the results of neglected dyspeptic conditions of the stomach are cancer, consumption, heart disease and epilepsy. Kodol Dyspepsia Cure prevents all this by effecting a quick cure in all cases of dyspepsia.

By allowing the accumulation in the bowels to remain, the entire system is poisoned. DeWitt's Little Early Riders regulate the bowels. Try them and you will always use them.

Scrofula to Consumption.

Any one predisposed to Scrofula can never be healthy and vigorous. This taint in the blood naturally drifts into Consumption. Being such a deep-seated blood disease, Swift's Specific is the only known cure for Scrofula, because it is the only remedy which can reach the disease.

Scrofula is an obstinate blood disease, and is beyond the reach of the average blood medicine. Swift's Specific is the only remedy equal to such deep-seated diseases; it goes down to the very foundation and forces out every taint. It is purely vegetable, and is the only blood remedy guaranteed to contain no mercury, potash or other evil substance whatever.



YOUR FACE IS A MIRROR REFLECTING HEALTH OR DISEASE. Karl's Clover Root Tea. Beautifies the complexion, Purifies the Blood, gives Fresh, Clear Skin, Cures Constipation, Indigestion, and all Eruptions of the Skin.

When a man knows he has done wrong he always gets in a temper before his wife has a chance.

Pneumonia, la grippe, coughs, colds, croup and whooping cough readily yield to One Minute Cough Cure.

ASTORIA'S GREAT SURPRISE. Boston Shoe Company, Ladies' fine kid slippers and ties, 75 cents, worth \$1.25.

Chauncey M. Depew was smitten with the delights of the automobile in London and will keep one in Washington.

There is more Catarrh in this section of the country than all other diseases put together, and until the last few years was supposed to be incurable. For a great many years doctors pronounced it a local disease, and prescribed local remedies, and by constantly falling to cure with local treatment, pronounced it incurable.

General Wheeler wears a cuff button two buttons that were shot off his uniform during the war of the rebellion.

Don't think you can cure that slight attack of dyspepsia by dieting, or that it will cure itself. Kodol Dyspepsia Cure will cure it; it "digests what you eat," and restores the digestive organs to health.

When the maid departs the mistress for the first time realizes the trouble it is to get a maid.

It makes no difference now had the wound if you use DeWitt's Witch Hazel Salve; it will quickly heal and leave no scar.

A woman never thinks she has written anything worth reading unless she gets her fingers colored with ink.

When a man is fined only \$1 for throwing his friend down stairs no one in honesty can say that summer amusements are dear.

None of us would be contented if we could only remember how we looked when we were getting our second teeth.

If you have piles, cure them. No use postponing operative operations that cure the disease and relieve the distress.

NERVITA PILLS. Restore Vitality, Lost Vigor and Manhood. Cure Impotency, Night Emissions and Wasting Diseases, all effects of self-abuse, or excess and indiscretion. A nerve tonic and blood builder. Brings the pink glow to pale cheeks and restores the fire of youth.

NERVITA MEDICAL CO. Clinton & Jackson Sts., CHICAGO, Ill. For Sale by Charles Rogers, Drugist, Astoria, Oregon.

THE NEW "NORTH-WESTERN LIMITED" (20TH CENTURY TRAIN). Between Minneapolis, St. Paul and Chicago, is entertainingly described in an illustrated booklet, which will be furnished FREE on application to W. H. MEAD, Gen. Agt., 268 Washington Street, PORTLAND, ORE.

Pacific Navigation Company

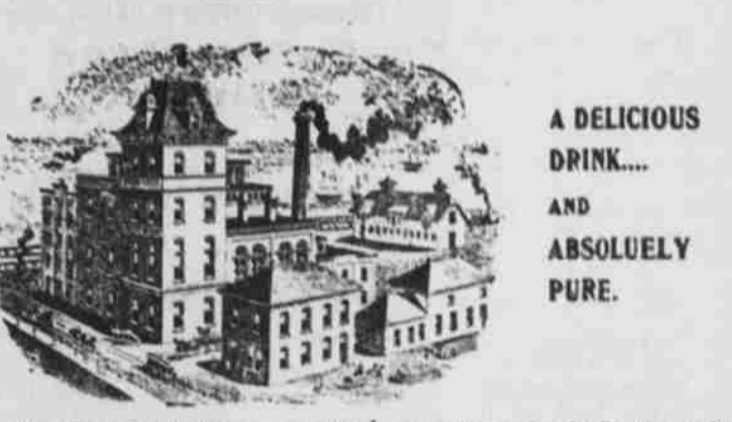
STEAMERS ONLY DIRECT LINE ASTORIA to TILLAMOOK. GARIBALDI BAY CITY HOBSONVILLE.

Connecting at Astoria with the Oregon Railroad & Navigation Co. for San Francisco, Portland and all points east. For freight and passenger rates apply to Samuel Elmore & Co., General Agents, ASTORIA, ORE.

W. F. SCHEIBE, Manufacturer of the Always Reliable

A full line of Pipes, Tobacco, and Smokers' Articles. "La Belle Astoria" Cigar. Scheibe's Opera Star. Scheibe's Special. And Other Brands.

Kopp's "Best"



The North Pacific Brewery, of which Mr. John Kopp is proprietor, makes beer for domestic and export trade.

Bottled beer for family use, or keg beer supplied at any time, delivery in the city free.

North Pacific Brewery

THE LOUVRE

Seventh and Astor Streets.

SHASTA MINERAL WATER, PEPPER, NOBLE, HICKORY AND SHAW'S MALT WHISKIES.

ALL OTHER LIQUORS, WINES, BEER AND CIGARS Served Day and Night.

AUGUST KRATZ, Manager.

VIM VIGOR VITALITY FOR MEN

Mormon Bishop's Pills have been in use over 20 years by the leaders of the Mormon Church and their families. They cure the most stubborn cases of constipation, indigestion, catarrh, etc.

SANTAL-MIDY

These tiny Capsules are superior to Balsam of Copaiba, Cubeb or Injections and CURE IN 48 HOURS.

"THE MILWAUKEE"

A familiar name for the Chicago, Milwaukee & St. Paul Railway, known all over the Union as the Great Railway running the "Pioneer Limited" trains every day and night between St. Paul and Chicago, and Omaha and Chicago.

H. F. Prael Transfer Co.

Telephone 26. DRYING AND EXPRESSING. All Goods Shipped to Our Care Will Receive Special Attention.

L. LEBECK

Carpenter and Builder General Contractor. HOUSE RAISING AND MOVING A SPECIALTY.

J. A. Fastabend

General Contractor and Builder. House-moving Tools for Rent.

LUXURIOUS TRAVEL

The "North-Western Limited" trains, electric lighted throughout, both inside and out, and steam heated, are, without exception, the finest trains in the world.

ASTORIA AND COLUMBIA RIVER RAILROAD.

Leaves PORTLAND. Arrive. 8:00 a. m. Portland Union Depot. 11:15 a. m. 7:00 p. m. For Astoria and Inter. 9:45 p. m. Intermediate points. ASTORIA. 7:45 a. m. For Portland and Inter. 11:30 a. m. 6:30 p. m. Intermediate points. SEASIDE DIVISION. 1:00 p. m. Lv. Astoria. 4:00 p. m. 3:00 p. m. Ar. Warrenton. 4:55 p. m. 5:30 p. m. Ar. Seaside. 6:15 p. m. SPECIAL SEASIDE SUNDAY TRAIN. Leaves Astoria at 9:30 a. m.; arrives at Seaside 3:45 a. m.

GREAT NORTHERN RAILWAY TICKETS to all PORTS EAST

Through palace and tourist sleepers, dining and library observation cars. SLEAZANT VERTIBULE TRAINS. No. 4 Limited leaves Portland at 8:10 p. m. No. 3 Limited arrives Portland at 2:30 a. m. For rates, etc., call or address G. W. LOUNSBERRY, Agent O. R. & N., Astoria, or A. E. C. DENNISTON, A. E. C. P. & T. A., Portland, Ore.

BALTIMORE and OHIO RAILROAD

Royal Blue Trains BETWEEN THE EAST AND WEST. Only line operating its own through trains between St. Louis, Louisville, Springfield, Cincinnati and New York, via Washington and Philadelphia. The traveler over the B. & O. is furnished with the greatest of the greatest scenery in America.

WHITE COLLAR LINE

Columbia River and Puget Sound Navigation Company. Bailey Gatzert leaves Astoria daily, except Sunday, at 7 p. m. Leaves Portland daily except Sunday at 7 a. m.

A FEW INTERESTING FACTS

When people are contemplating a trip, whether on business or pleasure, they naturally want the best service obtainable so far as speed, comfort and safety is concerned. Employees of the WISCONSIN CENTRAL LINE are used to serve the public and our trains are operated so as to make close connections with diverging lines at all junction points.

Burlington Route

You Don't Change Cars. If you go east via Billings and the Burlington route.

Through Tickets

TO THE EAST AND SOUTHEAST VIA UNION PACIFIC OVERLAND ROUTE. PULLMAN PALACE SLEEPERS, TOURISTS SLEEPERS and FREE RECLINING CHAIR CARS. Salt Lake, Denver, Omaha, Chicago, Kansas City and other Eastern cities.

O.R. & N.

DEPART TIME SCHEDULES From Portland ARRIVE. For Mail 8 p. m. For Mail 8 p. m. For Mail 8 p. m.

The Wisconsin Central Lines.

And you will make direct connections at St. Paul, Chicago, Milwaukee and all points east. For any further information call on any ticket agent, or correspond with JAS. C. POND, Gen. Pass. Agent, or JAS. A. CLOCK, Milwaukee, Wis. General Agent.

SOUTHERN PACIFIC COMPANY

LEAVE PORTLAND ARRIVE. 7:00 P.M. OVERLAND EX-... 4:30 A.M. Via Woodburn, for Mount Angel, Willamette Falls, Astoria, Seaside and Rainier.

Kodol Dyspepsia Cure.

Digests what you eat. Artificially digests the food and aids Nature in strengthening and reconstructing the exhausted digestive organs.

W. H. HURLBURT.

Gen. Psa. Agt. Portland, Or.

G. W. LOUNSBERRY.

Agent Astoria.

W. H. HURLBURT.

Gen. Psa. Agt. Portland, Or.

G. W. LOUNSBERRY.

Agent Astoria.

W. H. HURLBURT.

Gen. Psa. Agt. Portland, Or.

G. W. LOUNSBERRY.

Agent Astoria.

W. H. HURLBURT.

Gen. Psa. Agt. Portland, Or.