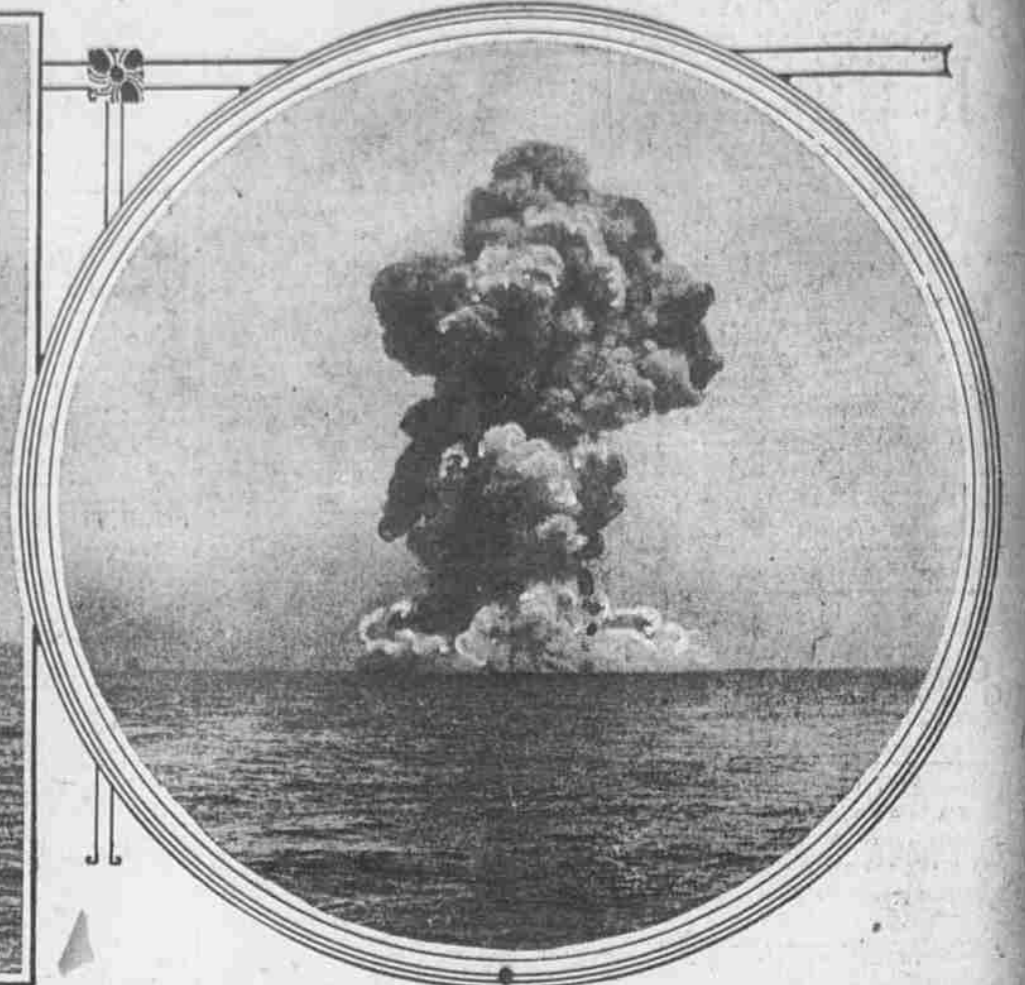
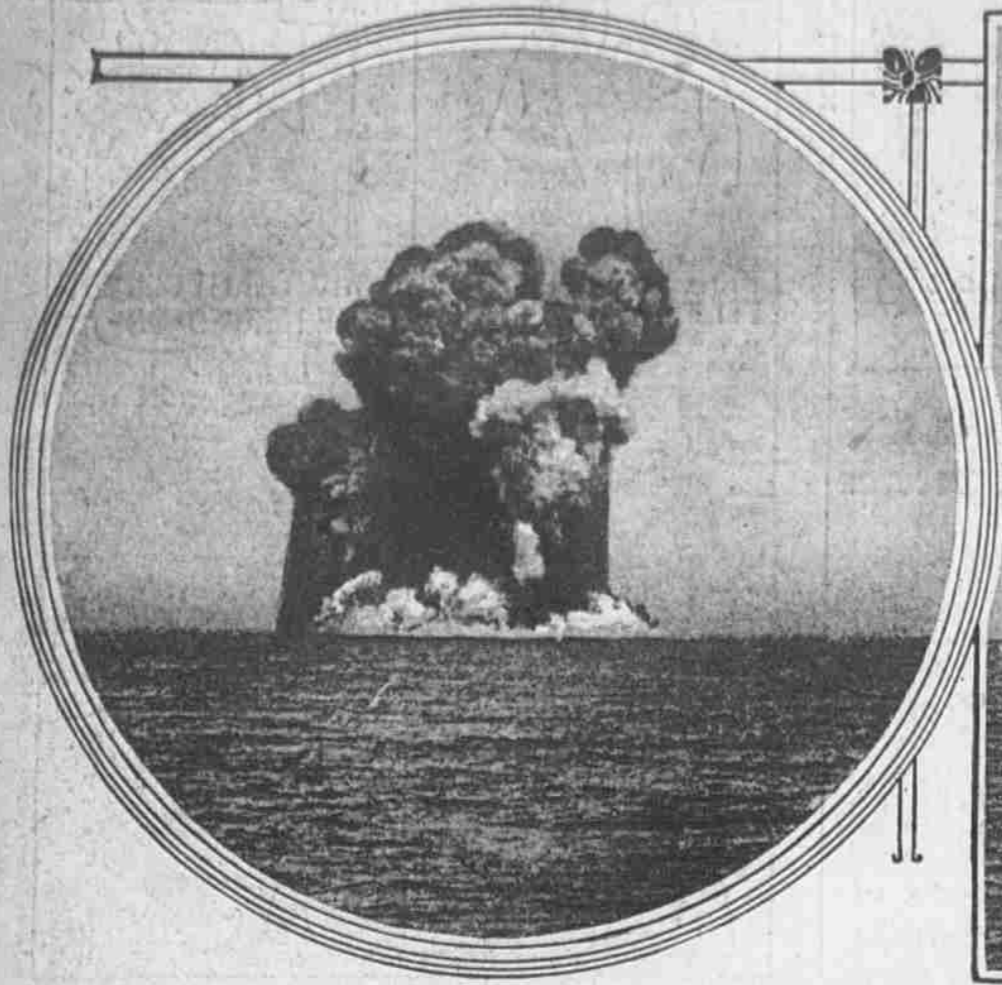
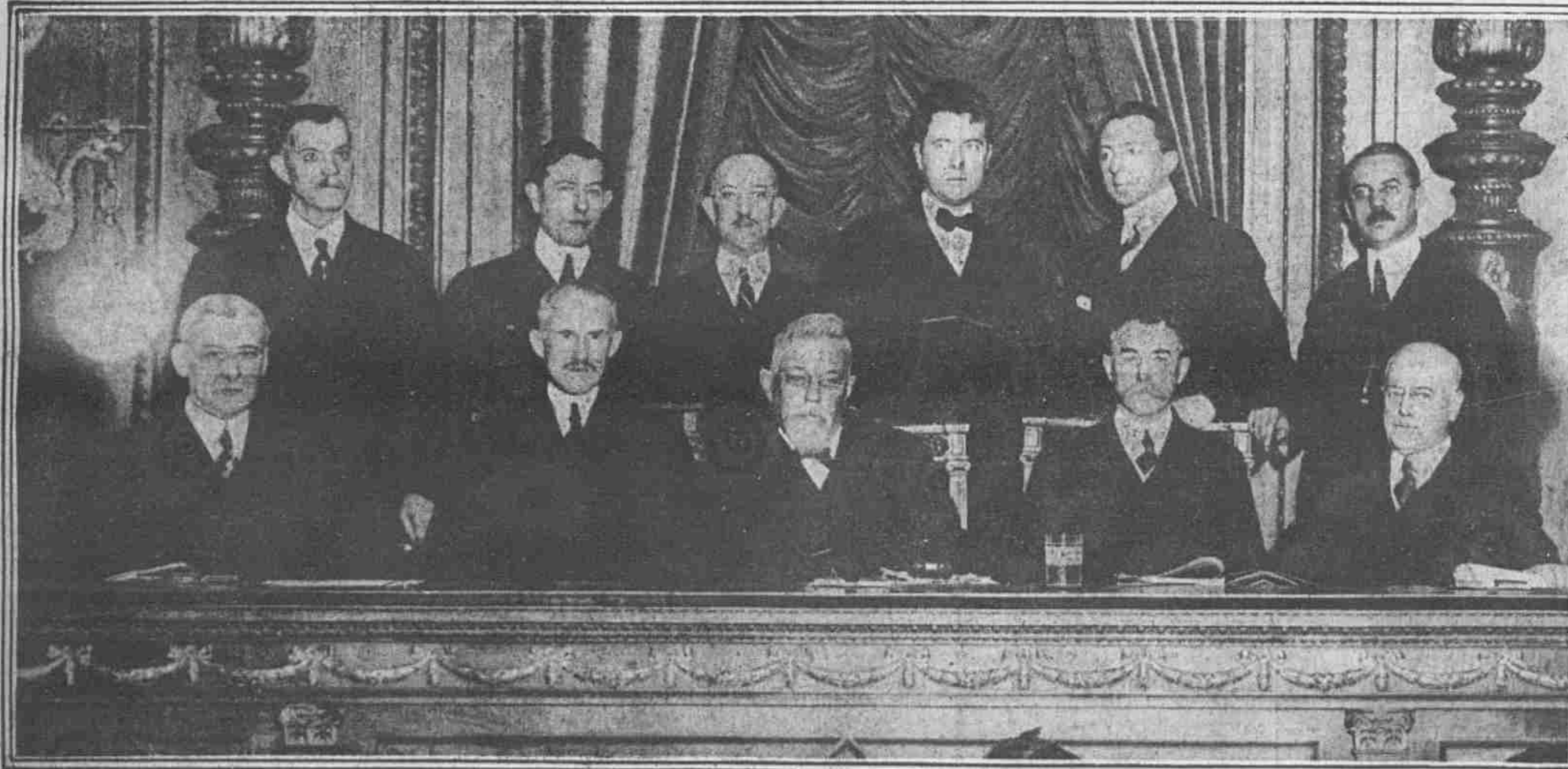


MEN, WOMEN AND EVENTS THAT FIGURE IN THE NEWS OF THE DAY HERE AND ABROAD



HOW A GREAT DREADNOUGHT LOOKS WHEN BLOWN INTO THE AIR FROM A GIANT EXPLOSION BENEATH. The London Mirror printed these photographs as having been taken at the instant the battleship Bulwark was blown up recently off Sheerness, at the mouth of the Thames, when the vessel burst into fragments. The British said an exploding magazine was responsible, the Germans said a submarine did it. The first picture shows the first burst of water and smoke, completely concealing the ship; the second shows the explosion at its climax with the air full of debris and flying timber, and the third shows the cloud of smoke and gas as it began to settle. It is said that a photographer was preparing to take the ship at the time, not dreaming she would explode as he pressed his bulb. Only 20 members of the crew survived.



PUBLIC SERVICE COMMISSION IN SESSION TO CONSIDER PASSENGER RATE CASE. From left to right, lower row, the members are Milton J. Brecht, A. Larue Tone, former Governor Samuel W. Pennypacker, Emory R. Johnson and Charles F. Wright. The photograph was taken in the Councils' Finance room in City Hall, just before the hearing began yesterday, when attorneys for the railroads argued to show why the recent increase in rates was made necessary. Commuters were offered a chance to give their testimony today. They contend Philadelphia travelers are unjustly discriminated against.



GIRL ARTIST WHO WON \$1000 PRIZE. Miss Alice I. Riddle at her easel. Her plan for decorating the library of the West Philadelphia High School was pronounced the best and most original submitted. She is 22 years old.



GERMAN SOLDIERS BUILD ENEMY OF SNOW TO SHOOT AT. Troopers of the Kaiser's army are amusing themselves during a leisure hour by fixing a snow stumpy with a Belgian target and aiming to make a little target practice. The men are exercising tonight a call to the front. The photograph shows the heavy snow has arrived with the winter that has settled down on the battle line in western zone.



PIE PROMINENT IN PIPING TIMES OF PEACE. Since the storm-battered battleship Kansas reached League Island her crew has furnished a driving business for the pie dealer. Bakers don't seem to break new ground on a long cruise, consequently such toothsome public pleasures are in great demand when shore leave comes. The crew is indulging in early morning on the gangplank of the battleship.