

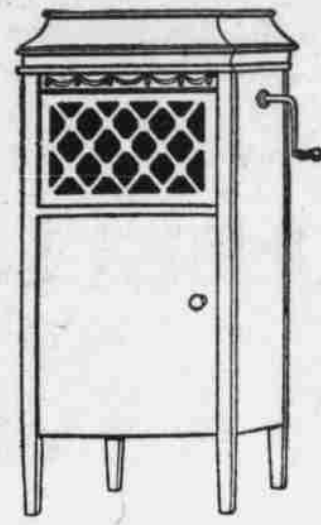
PATHE



THIS classic Sheraton will harmonize as well with a simple interior as it will with the most elaborate. Its artistic design with severe lines gives it strength and dignity. Satin Finish Mahogany, with all the exposed metal trimmings of antique silver hardware; automatic stop; Universal tone arm; Pathe perfection tone control; Pathe reproducer; Sapphire Ball; double spring motor; size 47½ inches wide; 20 inches deep; 36 inches high.



PATHE



THE Pathe artistic standard is well illustrated in this model, refined in its simplicity, dignified in the harmony of its proportions. Mahogany or Oak (Golden and Fumed) all exposed parts nickel-plated; Universal tone arm; Pathe perfect tone control; Pathe reproducer; Sapphire ball double spring motor; size 18 inches wide 19½ inches deep; 41½ inches high.

Pathe Phonographs

BEAUTIFUL RESIDENCES are being furnished with discriminating care, and today a place is set aside for the Phonograph, which is a real necessity in making a house a home.

Music Lovers choose the **Pathe**—the instrument famous for its magnificent tone and design. Music must be wooed, not gouged; and we know that this matter may be safely left to the verdict of your ears once you hear the **Pathe**. Give yourself up for the moment to full enjoyment of the rapturous melodies that pour fourth from this kingly instrument. Put on your favorite band or orchestra record. Note your delight as for the first time you hear each instrument reproduced as it actually should be—vibrant, natural, fairly breathing of life itself. Hear the brass, the silvery cornets, the flutes, piccolos, the soft mellow tones of the cello all blend together in a flood of melody that soothes you and feeds and satisfies that longing in your nature, which, left unsupplied, dwarfs your better self. Then you will know for yourself that you have found your ideal Phonograph. There is great pride in the possession of such an instrument.

SEE AND HEAR THE PATHE BEFORE BUYING

Our record stock is complete. New records coming in all the time. All **Pathe** records guaranteed to play a thousand times if played on a **Pathe-phone**, and with attachments that can be had at our store. **Pathe** records can be played on ANY Machine.

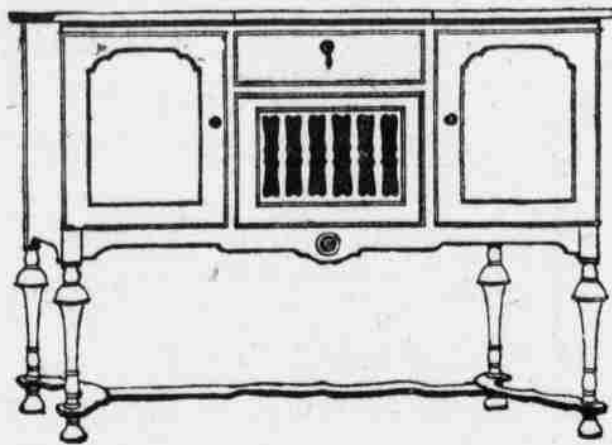
With us Your Credit is Good

Pathe Sapphire Ball



There is no secret difference in the Pathe. The duplication instead of mere reproduction of the living voices of the artists is due to the Pathe Sapphire Ball, which fits and fills the record grooves, so always giving the full tone value without wearing out either sapphire or record.

Interesting comparisons of the various methods of reproduction of sound and of the various disc in use—emphasize the superiority of the Pathe Sapphire Ball for duplicating the actual rendition of the artists. The "Scientific American" rightly says, "to have proper tone rendering, the stylus or needle must fit and fill the slot exactly; if too small, it will be thrown from side to side, giving false tones; if too big it will give trouble by jamming, and cause excessive wear of the record." A steel needle wears out the record as quickly as it wears itself out and never fits the slot. The Pathe Sapphire Ball never wears out and always fits and fills the slot.



IN strength and simplicity, this William and Mary model is exactly typical of the period of which it is designed. It combines grace, dignity, and harmony of proportions. Finished in American Walnut, with all exposed metal trimmings of antique brass hardware; automatic stop; Universal tone arm; Pathe perfect tone control; Pathe reproducer; Sapphire ball; double spring motor; size 42 1-2 inches wide; 20 inches deep; 36 inches high

W. M. TURNER

W. M. TURNER, Jr.

Pathe Music Co.

Woosley Building

Next door to Old National Bank

Union City, Tenn.