

A BIG NEW MODERN, UP-TO-DATE HOTEL

IN THE VERY HEART OF THE CITY OF EL PASO HAS BEEN BUILT, IS OPEN AND DOING BUSINESS

The New Hotel Sheldon

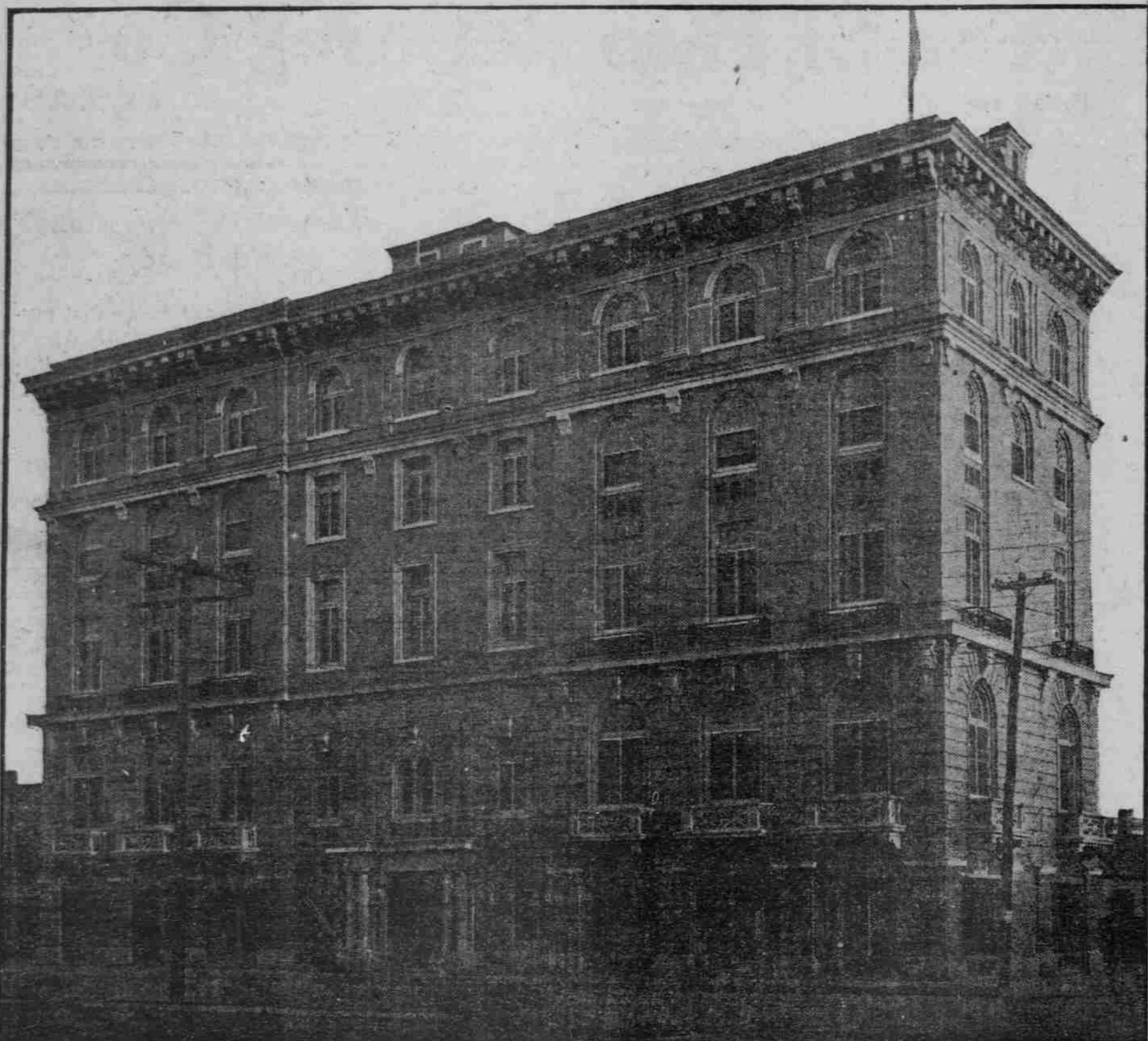
Service and Accommodations Equal to the Best.
European Plan. 80 Rooms With Private Bath; 60 With Detached Bath.
Large Cafe, Private Dining Rooms, Open Day and Night.
Meals a la carte. Music Every Evening.

Most Beautiful Lobby and Ladies' Reception Parlor in the State

We Are Satisfied That We Are Satisfying the Most Fastidious
Everybody IS Satisfied. El Paso is Satisfied.

Under Management **Burt Orndorff**

Magnificent New Home Of the Toltec Club **Marked Expansion In All El Paso's Public Utilities**



Used exclusively for club purposes; the finest club building between St. Louis and Los Angeles.

THE growth of a city can be accurately measured by the growth of its public utilities. During the year 1910 El Paso's public service corporations have been improved and extended until the service has been almost doubled to meet the demands of the rapidly growing city.

Municipal Waterworks.
The purchase by the city of the International Water company's water system was the biggest single event in the public service history of the past year. Purchased at a cost of \$927,000, the city has diligently started to work to improve the plant, put in more service pipes and increase the efficiency of the greatest of public utilities as rapidly as possible. A total of \$150,000 is to be expended in this enlargement work. Seven miles of mains, from 14 to six inches in size, are to be laid, and the crews are at work putting much of this in the ground.

Street Car Extensions.
The El Paso Electric Railway company has had a construction crew at work during practically the entire year extending its tracks, replacing the light steel with heavy rails and paving between the tracks with concrete and brick for the laying of the street paving. A total of one and one-half miles of new track has been laid during the year 1910. The smelter car line has been extended to the cement plant a distance of one-half mile, and car service is now provided for the employees of the big plant. West Missouri is to be given car service as soon as the track from Oregon street to Mundy avenue by way of west Missouri and Putnam can be completed. This line will connect with the smelter line and will give the residents of the northwestern highlands two car lines. Oregon street from Boulevard to Arizona has been given a double track to correspond with lower Oregon street. The Station street track has been improved with heavy steel and with paving between the tracks from First to Eighth streets. West Overland, from Chihuahua to Davis street, has also been laid with heavy steel and prepared for the paving company's operations. This eliminates one of the worst pieces of street car track in the city on the return route of the union station car line. Myrtle avenue from the Elks' club to Argo has also been given a heavy steel track. The park car line has been double tracked for another half mile, leaving only a comparatively short distance of this line yet to be connected with the double tracks.

More New Cars.
The Electric Railway company has improved its rolling stock during the year with 19 new semiconvertible prepayment cars of the most modern design. The prepayment plan has been given a tryout and has proved such a success that all of the cars of the company are to be rebuilt and converted into the prepayment type. Five of the rebuilt cars have already been completed and put in service and more are to be turned out of the car shops as soon as the car builders can complete them.

Telephone Improvements.
The telephone systems of the city have kept abreast of the progressive movement. Both the automatic and Bell systems have extended their lines, improved their plants and increased the capacity of their plants to meet the needs of greater El Paso. The Southwestern Telegraph and Telephone company's holdings have been taken over by the Tri-State Telephone and Telegraph company, a subsidiary company of the Bell corporation, and the improvements of this company have been particularly noticeable. This transfer

of holdings has resulted in the Bell system in El Paso being completely rebuilt and remodeled. A \$15,000 building has been erected adjoining the Texas street headquarters of the company. This is the executive headquarters and the central station for the local and long distance lines.

Gas Extensions.
During the year the El Paso Gas and Electric company has laid 11 miles of new four and six inch mains for furnishing gas to the outlying portions of the city. East El Paso has been connected to the feed mains, as has Highland Park. The gas company has purchased the Hadley block on the corner of Oregon and Franklin streets at a cost of \$42,000, and will establish its offices and salesrooms there as soon as it can obtain possession of the property. During the coming year the company has planned to build a new gas tank to have a storage capacity of 500,000 cubic feet and to cost \$50,000. More main extensions are also to be laid.

Wireless Station.
During the month of November the Paulson Wireless Telephone and Telegraph company started the construction of two wireless telegraph towers, each of which is 200 feet high. Within two weeks time this was finished and during the second week of December the first tests of the new plant were made. The company came and quietly put up its station and work was well under way before El Paso was aware of its existence. No stock was sold in the city. The company is to operate in connection with other stations in California.

WATCH THE DATE ON THE YELLOW LABEL.
Mail subscribers should watch the date which follows their name on the yellow label pasted on the wrapper or first page of their paper. The date there shows when the subscription expires. When a remittance on subscription is made, this date is changed. If it is not changed soon after remittance, allowing, of course, a reasonable time to reach El Paso, the subscriber should call the attention of this office to the oversight. By doing so when the matter

is fresh in the minds of all concerned all further trouble and inconvenience will be avoided.

The Thiel Detective Service Co.
Has removed to suit 414 American

National Bank Bldg., and are prepared to handle legitimate detective work for corporations, mine owners, firms, and attorneys. T. S. service has branches in the principal cities of the U. S., Canada, and Mexico.
Both Phones.

COLDS CAUSE HEADACHE
LAXATIVE BROMO Quinine, the world wide Cold and Grip remedy removes cause. Call for full name. Look for signature E. W. GROVE. 25c.