

Just received a Car of Dry
Land Turkey Red Wheat f.r
Seed.

VOGLER SEED CO.
Salt Lake City

If there is anything the matter with
your horses or stock use
W. B. Chapman's LINIMENT
For Man or Beast. If it does not
Cure when all fails, don't pay
for it. Get your money back.
AT ALL DRUGGISTS
Wholesale by
W. A. NELDEN DRUG CO.
Salt Lake City.



CLEAN GRAIN ?

PRICE QUESTION

Do not market your grain uncleaned.
It will bring a better price if it is thor-
oughly cleaned and graded.

LET THE CLIPPER DO THE WORK

The "CLIPPER" cleaner and fanner is especially adapted to the cleaning and
grading of all kinds of grain. If it can be cleaned the "CLIPPER" will do it.

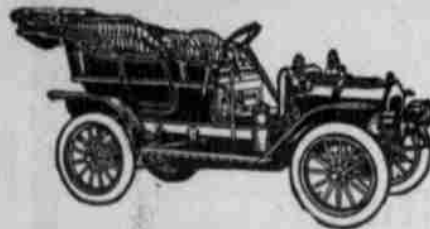
CLEANED GRAIN BRINGS BETTER PRICES

Write for complete booklet and descriptive matter, telling of its many uses.

THE BARTELDES SEED CO., General Agents
DENVER, COLORADO

THREE CAR LOADS OF REO AUTOMOBILES SHIPPED OUR COUNTRY TERRITORY IN MAY

WHO WILL BE THE NEXT
TO SHOW WISDOM ALONG
THESE LINES, TO SHOW
APPRECIATION OF MOD-
ERN UP-TO-DATE METH-
ODS ON THE FARM?



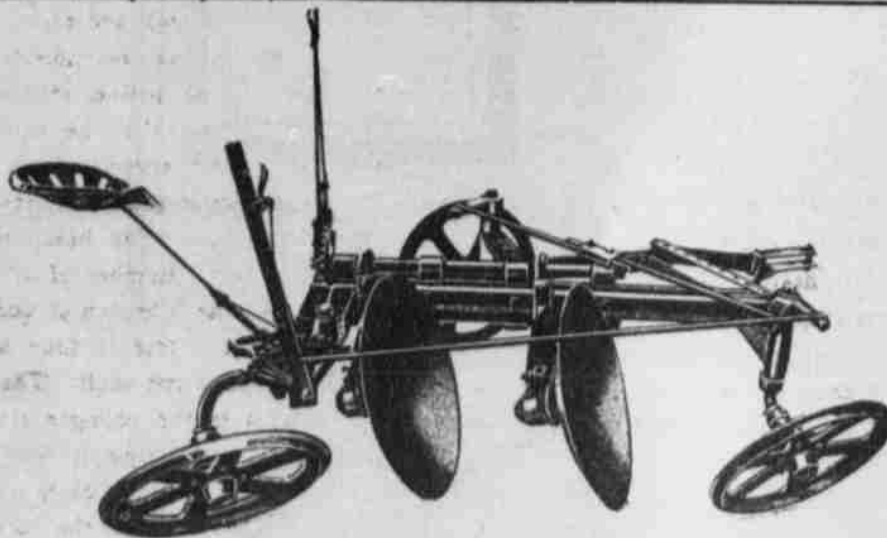
**REMEMBER A REO AUTOMOBILE
CAN BE USED FOR A GREAT MANY PURPOSES TO YOUR
ADVANTAGE.**

WRITE AND ASK US ABOUT THIS.

SHARMAN AUTOMOBILE CO.

109-111 W. So. Temple Street.

SALT LAKE CITY, UTAH



The FAMOUS DANIELSEN DISC PLOW

It plows any width or any depth.

It is simple, strong, and easy to operate.

It is the only disc plow under complete control.

OUR MACHINERY IS FULLY GUARANTEED

Danielsen Plow Co.

Bell Phone 3101

210 S. 6th West St.

SALT LAKE CITY

WRITE FOR CATALOGUE

AGRONOMY

This Department is Edited by Prof.
J. C. Hogenson, of the Ag-
ricultural College.

FARM MACHINERY AT STATE FAIR.

It was very gratifying to see the
fine exhibits and demonstrations made
by a number of the implement dealers
at the recent State Fair. The Utah
Implement and Vehicle Co. had a
large number of various kinds of ma-
chines running at full speed, includ-
ing their celebrated Minneapolis
thresher, manure spreaders, corn shel-
lers, fanning mills. They also had a
full display of plows, discs cultivators,
etc. on exhibition. Their greatest at-
traction, however, was their 40 horse-
power gasoline traction engine which
it was claimed can be run much more
cheaply than can a steam engine of
equal horse-power.

The Consolidated W. & M. Co. had
a full display of the famous J. I. Case
machinery, manure spreaders, Bain
wagons, etc., a very creditable display
of modern improved farm machinery.

The Sego Implement and Vehicle
Co. had a full display also of manure
spreaders, wagons, discs, harrows, hay
harvesting machinery, etc.

The Danielsen Plow Co. had a full
line of its plows, harrows and culti-
vators on the ground with a genial
demonstrator on hand to explain the
merits and superiority of their goods.

The Fairbanks-Morse & Co.'s ex-
hibit of gasoline engines and scales
was well worthy of special mention.
Engines of all sizes running, machin-
ery of all kinds from a churn to a
huge pump lifting an irrigation stream
of water 10 feet.

It is a shame that more of the im-
plement houses of the state were not
represented. It is one of the very
best means of advertising and bring-
ing their goods before the people, and
ought to be taken advantage of by the
dealers.

The Grain and Potato Exhibits.

It is very much to be regretted that
not a single sample of grain exhibited
at the fair was pure. Every sample
of wheat, oats and barley contained
from two to four varieties. There
were in all 13 varieties of wheat, oats
and barley on exhibit (exclusive of
the Agricultural College exhibit which
was not competing). Some showed

careful grading and fanning, while
still others contained chaff and straw
as it came from the thresher; no at-
tempt having been made to grade it
at all. The most carefully graded and
cleaned wheat was the Dry Farm Fultz
wheat. Much need yet to be learned
before the grain exhibits will come up
to the standard that they ought to.

The potato exhibit showed marked
improvement. There were 20 varie-
ties, nearly all well graded and
cleaned. Perhaps the best shaped and
exhibitable lot of potatoes was the
20th Century potatoes.

The potato that is coming more
rapidly into favor, especially in the
northern part of the state, is the Early
Eureka. This is a white, round pota-
to, somewhat flattened and with very
shallow eyes. It was introduced into
the state and has been grown now for
about six years by Mr. J. F. Harper
of Smithfield. Mr. Harper last year
cleared \$668 on every acre of land
planted to Early Eureka potatoes.
Mr. Harper always has his land in
the best possible condition, selects his
seed potatoes carefully and is a good
example of a thrifty, prosperous, up-
to-date, progressive farmer. Other
farmers please take note and see what
it is properly done.

POINTS.

Friendship resembles wine—the old-
er the better.

Women with pretty teeth will laugh
at a stupid joke.

But the busy miller doesn't kick
because life is a continuous grind.

Pessimists are seldom as tired of
the world as the world is of them.

Give a starving sinner a square
meal first and pray for him afterward.

A missing suspender-button often
leaves a man in suspense.

One of the first duties of a Christian
is to learn to smile.

Some men would rather be thought
rich than be considered rich in
thought.

If you could see the story of your
life in print you would not believe
half of it.

When a man's wife goes away for
a month's visit the chances are that
he enjoys it as much as she does.—
Chicago News.