

EMIGRATION CANYON RESORT INN PREPARES FOR A BIG FALL SEASON

With the multi-colored canyon sides to its right, mellow in their autumnal shades of browns and yellows, and the foothills stretching away on either hand, grey with the approaching fall, while below the city throbs through its busy days under the azure haze of early September, the pretty Inn at the mouth of Emigration canyon, where is situated Salt Lake's newest and most popular playground, is being put in readiness for a fall and winter of dancing parties, motor party dinners, riding and excursion parties, and in fact for all those Salt Lakers and tourists who have come to look upon the picturesque low lying mission Inn as one of the most delightful eating places in and about Salt Lake.

Throughout the summer the Inn has been very popular, the quality of its cuisine and its service appealing to its patrons particularly, for the a la carte menus are under the direction of one of the finest chefs ever brought into the intermountain country.

The Inn will be open throughout the fall and probably through most of the winter. It is always ready for the general run of canyon and resort visitors, who find many comforts seldom obtained at other resorts.

Automobile and riding parties should make arrangements in advance at the Inn for dinners or lunches.

Emigration canyon resort is so situated that while it is but a twenty-five or thirty-minute ride from town by the new street car system up the canyon, it is at the same time as much removed from the city as any of the other resorts and much more accessible than some of the latter. The best road to the Inn is south on Thirteenth East street to Ninth South and thence directly east.

Efforts are now being made to secure the privilege of constructing a macadamized road from the Resort north to Fort Douglas. A splendid new feature of the early spring next year will be a summer cottage colony on the foothills near the Inn. Five acres have been set apart for the cottages, and the colony will be most exclusive, references being required of those who rent the cottages. Two applications have already been accepted.

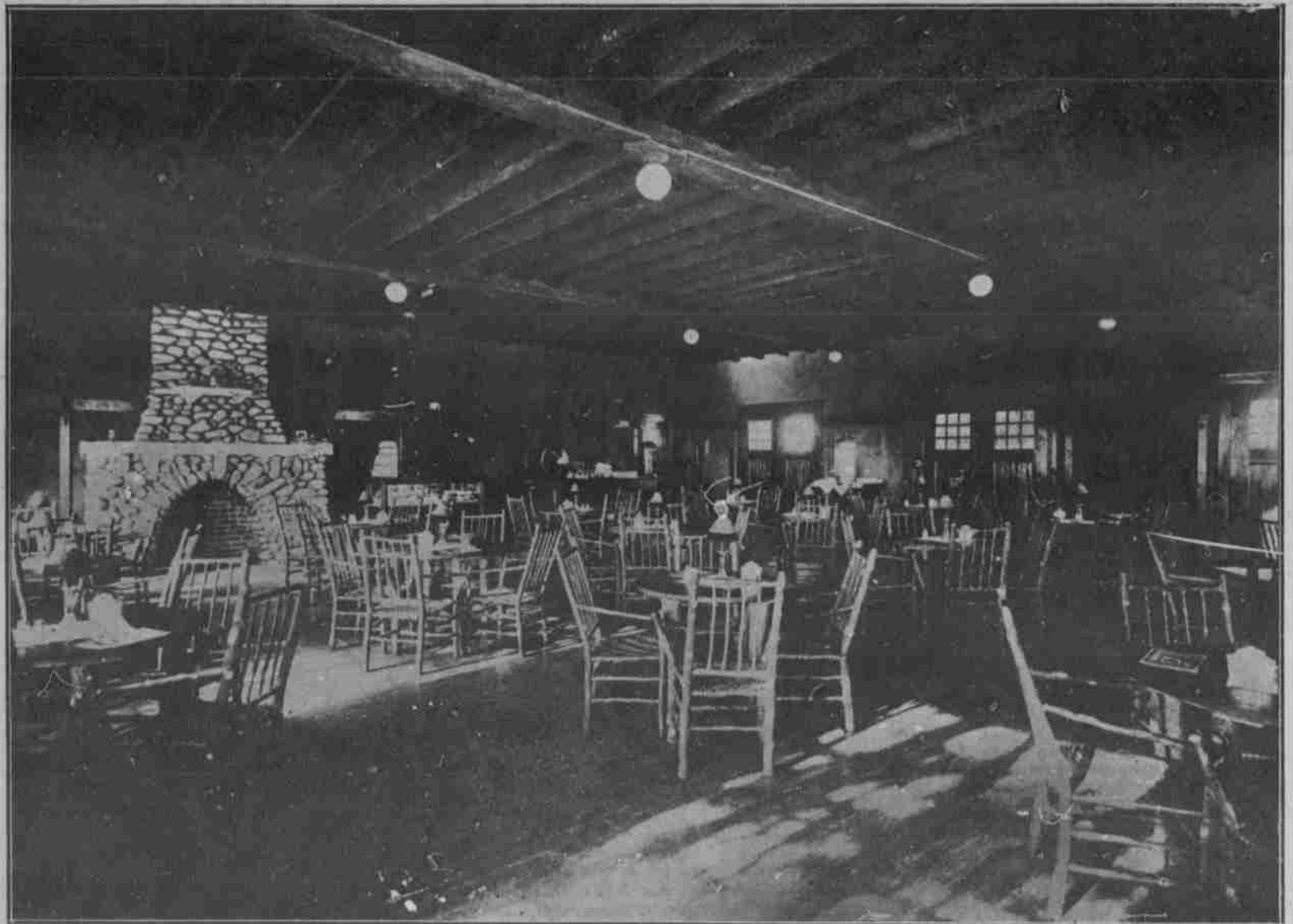
There is usually a ball game at the Resort Sundays, and early next spring work will be started on the tennis courts that have been planned for the ground directly in front of the Inn.

When the management completes the plans at their disposal the resort will resemble a big country club more than anything else. The only difference will be that the pleasure ground will have a few more attractions than the average country club has at present.

The cuisine and service at the Inn are the best to be found anywhere.

The street cars that run to the Resort land one almost at the doors of the Inn.

On Labor Day ticket No. 61 won the cash prize of \$50, and the money has not yet been called for.



INSIDE THE INN IN EMIGRATION CANYON