

will suffice to keep the normal force of miners employed for the next twelve months and, incidentally, to fill the strong box of the company with coin.

The most serious obstacle in the way of development this year has been the heavy flow of water into the 400 level. At one time the liquid element drove the miners from their work and it was not until a larger pump was installed that the flow could be handled. Ultimately the ground of the Columbus and surrounding companies will be drained by a deep tunnel. Until this is done they will continue to suffer more or less inconvenience from water at certain times of the year. The Columbus, however, is in a position to deal effectively with the annual floods by means of its pumping equipment, to the present depth.

Deeper drainage will give the Columbus Con. access to ore shoots from which it is now excluded.

Lead, silver and copper in varying proportions impart value to the output of the mine. Close by is the Columbus milling plant which performs wonders in extracting the metal contents of the rock. Of concentrating ore there is such a quantity that the plant need never close for want of material to work upon.

Power for the operation of the mine, the mill and the compressor is supplied from an electrical generating station run by water power. The electrical plant is owned by the Columbus company and is one of its most valuable assets.

Another item of the surface equipment that has proved of great value to the Columbus is its large and comfortable boarding house. Owing to the poor accommodations usually provided at an isolated camp like Alta it is difficult to get and keep competent miners. By furnishing a building and a table that equals those of the better class of city hotels the Columbus has overcome this difficulty. Its operating force is composed of the best miners to be found anywhere and they are content to work at Alta the year around.

The admirable surface improvements of the Columbus have been created upon the recommendation of President Jacobson whose progressive policy has met with generous support from the stockholders.

At present Mr. Jacobson is engaged in creat-

ing other Columbus Consolidateds around the parent mine. At the South Columbus the success of his efforts is already assured and equally gratifying results are promised by the West Columbus, East Columbus and Columbus Extension.

BONDAGE

By Reginald Wright Kauffman.

I am the slave of day
And underneath the sun
I play my part with stubborn heart
Until the day is done;
I do the petty task,
I earn the grudging pay,
And none can guess I wear a mask,
Indentured to the day.

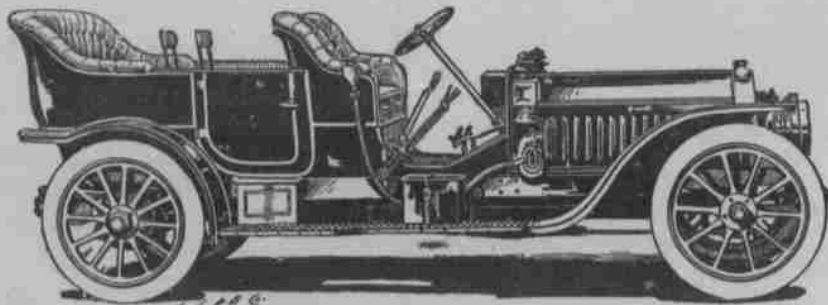
But when the sun has set
And labor ends again,
How easy to forget
The walks and ways of men!
Deep in my heart I seek
The lilac and the rue,
The white rose and the rose of red:
The memory of you.

What though the miles divide,
What though the years are past?
Across the night I dream aright,
And am myself at last;
A bondsman of the day,
While day is on its throne,
The secret stars all know I am
Your slave, and yours alone!
—Smart Set.

SERENADE

O come with me and be my cook,
And you may have my pocketbook!
For you the parlor door's ajar,
And you may use my motor car.

My wife has gems that you may wear,
And you may use her Sunday hair.
And if these things enticing look,
Then come with me and be my cook.
—Puck.



Peerless Six Cylinder Touring Car 1909

You Will Not Forget

Where merit and satisfaction lies in laundering if once our patron.

Our *Soft Water Process* is the acme of all that's the *BEST* in laundering.

The only laundry in the city *softening and filtering* all water used.



TROY LAUNDRY

Both Phones 192

The Laundry of Quality

166 Main Street

If You Want a Modern Home

If You Want a Fine Lot

If You Want to Buy or Sell Any Kind of Real Estate

If You Want the Best Terms Obtainable

See

Richter, 19 ———
W. 1st South



Sherbets, Ices and Fine Candies are Among our Specialties

Our Ice Cream is sold exclusively at Salt Palace, Saltair and at Wandamere.

Every Attention Given Out of Town Orders

We Are Prepared

As never before to supply every Floral want for the holidays. Cut Flowers in the greatest variety; beautiful Potted Plants and Xmas Greens galore.

HUDDART FLORAL CO.

East Second South, Opposite Grand Theatre

WE ARE NOW TAKING ORDERS FOR

LOWNEY'S CHRISTMAS BASKETS

They range in price from 85c to \$18.00

F. J. HILL DRUG CO.

"The Never-Substituted"