

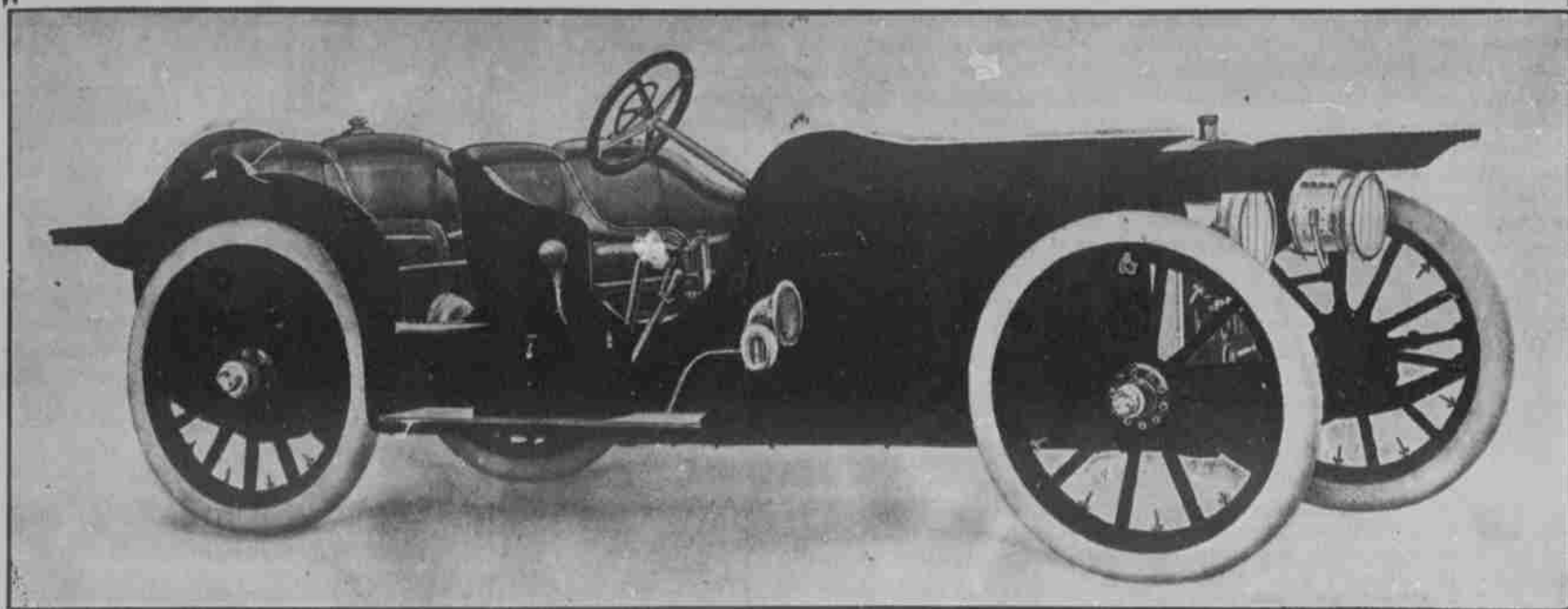
WE ANNOUNCE THE ARRIVAL  
OF OUR FIRST SHIPMENT OF

# American Cars

One Traveler Model for Immediate Delivery

\$4,000 F. O. B. Indianapolis

Guaranteed Free of Repairs for One Year



## THE AMERICAN TRAVELER

NO NOISE BUT THE WIND

This car embodies certain pronounced structural departures from accepted usage which establish it in a class by itself. These departures from accepted usage may be scheduled in the order of their importance in a very few words:

First, the underslung frame.

Second, the resultant virtue of an absolutely straight line drive.

Third, the consequential advantage of a spring action which recoils upward instead of downward.

Fourth, the additional merit of absolute freedom from side sweep and swaying motion.

Fifth, the absolute immunity from danger due to overturning and to broken springs.

Sixth, the tremendous power quality which gets the car under full headway in the fraction of a second.

In your own personal experience with The American the last consideration will doubtless be first because the marvelous capacity of the motor in developing instantaneous power makes a difference in the riding qualities which no words of ours can adequately describe.

The underslung frame, swinging the weight of the car closer to the ground, lowers the center of gravity, giving the car far greater stability. This, and the resulting absence of sidewise vibration, are particularly noticeable when the car is traveling at high speed.

Furthermore, in turning corners and in taking sharp curves, there is no lash to the rear end of the car—the tendency to skid is entirely eliminated by the underslung frame. If the momentum is great enough to swing the car out of its course, all four wheels slide, instead of the perilous skidding of the rear wheels.

The straight line drive is one of the perfections for which automobile manufacturers have striven for years. Very, very few—if any—cars but The American have an absolutely straight line drive, though some have approached it quite closely. The reason it is impossible in the majority of cars is that the frame is so high it is impossible to lower the engine sufficiently.

The underslung construction—and only that—gives an absolute straight line drive.

WE WILL DEMONSTRATE AT YOUR CONVENIENCE

Seven Different Models to Choose From

## Rooklidge-Gilmer Company

225 So. West Temple St.  
(Opposite Commercial Club Bldg.)

Telephones { Bell Main 5442  
                  { Ind. 1857