

PENNANT WEEK WILL SEE BIG EVENTS AT BALL GROUNDS

Directors of the Ogden Baseball club, by paying a cash guarantee, have been able to bring Helena here for seven games this week, thus giving local fans two Fourth of July contests at home and an opportunity to see the closing week of the first season pennant-race which comes to a close next Sunday.

In return, the club must have loyal support. Rather than ask fans for contributions, the directors have decided to ask only that they attend the games. Every man and woman in town who believes in supporting the kind of clean, high-class sport the Cannors have been giving, is urged to start tomorrow and attend every matinee at Glenwood this week.

Attendance of loyal rooters will help Ogden players materially to climb to the top.

In addition to the games, which promise to be thrilling throughout the week, a field day will be conducted with all opposing players participating.

Starting tomorrow, various athletic stunts will be pulled off, giving the fans an opportunity to get a line on the fastest base-runners, the most accurate throw, the longest throw, the best fielding of individual players.

Each day, in the half-hour prior to the game itself, one contest will be held. All the players who desire to enter in throwing the ball will participate one day. The man making the best throw for Ogden and the player making the best for Helena, will then participate in the finals to be held prior to the game on Sunday.

In these field sports, keen rivalry between individual players is expected to develop. Helena is the second team in the league in batting and fielding and now that the Vigilantes have strengthened their pitching staff, Ogden is going to have its hands full taking enough games to win the first-season pennant.

At the same time, the individual players on the Vigilantes' lineup will contest hotly in the field sports. Don Rader, for example, was the crack sprinter with the University of Washington before he graduated and went into organized baseball. Then there are others with the Helena crew who will help to make the various field sports intensely interesting.

Ogden goes into the closing week half a game behind Salt Lake and the Sea Gulls are determined to win the pennant. Glinlin's men are just as determined and fans figure that, barring mishaps, they have a shade the advantage.

"We want the moral support of the fans for this series which we have called pennant week," said President Bigelow this morning. "We want every loyal Ogden supporter to encourage the boys by attending every game. We have paid Helena a guarantee to come here and we want the fans to respond. Every member of the Cannors' crew is on tiptoe to win the flag. All are gladly aiding the extra attraction each day. Strong attendance this week will put the Ogden club in good form for the close of the first season and strengthen it and encourage the players for the beginning of the second. The pennant should be ours."

dressed beef steers, \$7.60@8.50; west-
era steers, \$6.50@7.75; southern
steers, \$5.75@8.25; cows, \$4.25@7.50;
heifers, \$6.50@9.00; stockers and
feeders, \$6.50@7.75; bulls, \$5.50@7.00;
calves, \$6.50@10.00.
Sheep—Receipts 5000; market
steady. Lambs, \$8.50@9.25; yearlings
\$6.00@7.00; wethers, \$4.75@6.00; ewe
\$4.25@5.25; stockers and feeders,
\$5.00@7.00.

Chicago Livestock.
Chicago, June 29.—Hogs—Receipts
35,000; market strong. Bulk, \$8.30@
8.45; light, \$8.15@8.45; mixed, \$8.05
@8.50; heavy, \$7.95@8.45; rough,
\$7.95@8.10; pigs, \$7.35@8.25.
Cattle—Receipts 17,000; market
steady to 10c higher. Beeves, \$7.50@
9.45; cows and heifers, \$2.70@8.90;
steers, \$3.90@8.25; stockers and feed-
ers, \$6.10@8.10; calves, \$6.50@9.65.
Sheep—Receipts 22,000; market
slow and generally 10c lower. Sheep,
\$5.30@6.25; yearlings, \$6.30@7.30;
lambs, \$6.40@8.25; springs, \$6.75@
9.25.

South Omaha Livestock.
South Omaha, June 29.—Hogs—Re-
ceipts 7000; market stronger. Heavy,
\$8.17 1-2@8.22 1-2; light, \$8.10@8.20;
pigs, \$7.50@8.00; bulk of sales, \$8.15
@8.20.
Cattle—Receipts 6000; market
stronger. Native steers, \$7.40@9.00;
cows and heifers, 6.25@8.25; western
steers, 6.50@8.50; Texas steers, 6.00
@7.75; cows and heifers, 5.75@7.00;
calves, 7.50@10.50.
Sheep—Receipts 10,000; market
lower. Fed muttons, 6.50@7.00; weth-
ers, 5.45@6.75; lambs, 8.25@9.25.

New York June 30—Lead—Quiet.
\$3.85@3.95. London, 19 pounds, 7s,
6d. Spelter—Quiet, \$5.00@5.10. Lon-
don, 21 pounds, 10s.

Sugar.
New York, June 29.—Sugar—Raw,
steady. Molasses, 2.67; centrifugal,
\$3.32; refined, steady; cut loaf, \$5.25;
crushed, \$5.15; mould A, \$4.80; cubes,
\$4.55; XXXX powdered, \$4.45; pow-
dered, \$4.40; fine granulated, \$4.30;
diamond A, \$4.30; confectioners' A,
\$4.20; No. 1, \$4.10.

CHICAGO GRAIN
Chicago, June 29.—Higher cables
tended to keep traders away from the
selling side of the wheat market to-
day and caused a sudden tightening
of values. It was also reported that
crop conditions in the northwest were
not as good as had been expected.
The upturn however, was not well
maintained. Opening prices, which
were unchanged to 1-4c higher, were
followed by a slight reaction, then by
a sharp advance, and later by a ma-
terial sag from top figures.

Rain breaking the drought south-
west had a weakening effect on the
corn market. The setback resulting,
though, was almost entirely overcome
later by the influence of wheat
strength. After starting unchanged to
3-8c lower, prices declined moder-
ately and afterward rallied briskly.

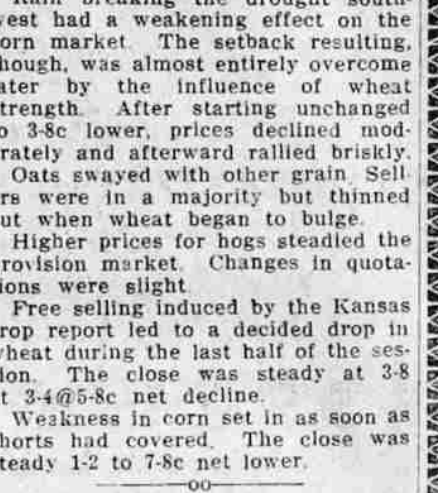
Oats swayed with other grain. Sell-
ers were in a majority but thinned
out when wheat began to bulge.

Higher prices for hogs steadied the
provision market. Changes in quotations
were slight.

Free selling induced by the Kansas
crop report led to a decided drop in
wheat during the last half of the ses-
sion. The close was steady at 3-8
at 3-4@5-8c net decline.

Weakness in corn set in as soon as
shorts had covered. The close was
steady 1-2 to 7-8c net lower.

**MINNESOTA DEMS
NAME HAMMOND**



W. S. Hammond.

Congressman W. S. Hammond won
the Democratic nomination for gov-
ernor at Minnesota's recent state-
wide primary election, defeating
Daniel W. Lawler by a majority of
less than 1,000. Mr. Hammond has
been in congress since 1907. He is a
graduate of Dartmouth college and
taught school from 1884 until 1890.
He was admitted to the Minnesota
bar in 1891, since which time he has
practiced law. He is unmarried.

KANSAS CITY LIVESTOCK.
Kansas City, June 29.—Hogs—Re-
ceipts 7000; market strong. Bulk,
\$8.25@8.40; heavy, \$8.40@8.45; pack-
ers and butchers \$8.30@8.45; light,
\$8.20@8.35; pigs, \$7.50@8.00.
Cattle—Receipts 11,000; market
steady. Prime fed steers, \$8.60@9.25;

THE WORLD'S MARKET NEWS

The week in the stock market
opened with a continuance of the
lethargic conditions which dominated
the greater part of the month's opera-
tions. Trading was virtually at a
standstill and changes were fraction-
al, but for the most part higher. Unit-
ed Dry Goods, pfd., with a sale of
100 shares, sold at 65, a gain of five
points. Contrary to expectations in
some quarters the assassination of
Austria's heir was without apparent
effect in London, although political
complications are feared. Domestic
news included reports from western
railroads indicating a marked in-
crease of tonnage.

KANSAS CITY LIVESTOCK.
Kansas City, June 29.—Hogs—Re-
ceipts 7000; market strong. Bulk,
\$8.25@8.40; heavy, \$8.40@8.45; pack-
ers and butchers \$8.30@8.45; light,
\$8.20@8.35; pigs, \$7.50@8.00.
Cattle—Receipts 11,000; market
steady. Prime fed steers, \$8.60@9.25;

MOYER IN THICK OF MONTANA FIGHTING



Charles H. Moyer.

Charles H. Moyer, president of the
Western Federation of Miners, fled
from Union Hall, Butte, Mont., dur-
ing a struggle between factions of
the Butte miners' union a few days
ago, in which one man was killed
and two others wounded. Bombs
were thrown which, it is thought,
were intended for Moyer. The war-
ring faction objects to being assessed
for the care of the miners at Calumet,
Mich.

STEAMER LANDS ALL PASSENGERS

**Liner California on Rocks at
Tory Island—Crew Re-
mains With Vessel.**

London, June 29.—The 1916
passengers on board the Anchor liner
California, which went ashore last
night on Tory Island during a dense
fog, were successfully transferred to
day to the Donaldson liner Cassandra,
and a small coasting steamer, with-
out loss of life.

The crews of several British tor-
pedo boat destroyers assisted in
transferring the passengers.
The California lies in a precarious
position on the rocky coast, but it is
expected she will be floated as soon
as fine weather sets in. Her crew re-
mains on board, although the water
has penetrated three of her holds.
Three hundred passengers of the
California, whose destination was
Ireland, were landed here this morn-
ing.

It's to Your Interest to Attend BURTS' Mammoth Clearance Sale OF ALL

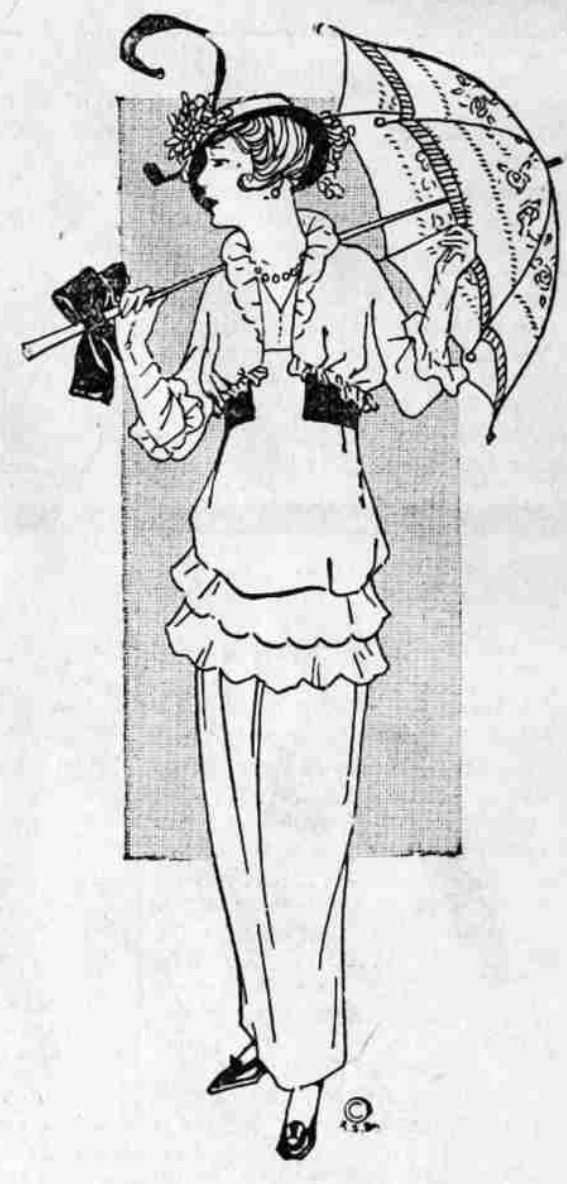
Ready-to-Wear Apparel This is the Crowning Event of the Season in our Ready- to-Wear Section---Every Coat, Suit and Dress Left on Our Hands Has Been Decidedly Marked Down, Re- gardless of Original Value, to Perfect a Quick Disposal.

Innumerable Bargains in Dresses of Unusual Beauty and Worth



We have broken all past records in extent and variety
of summer dresses. Fashion's favored styles are shown
in many materials of the delicate, sheer textures such as
crepe, lawns, mulls, linens, voiles, etc., lace and embroid-
ered trimmed and plainly tailored.

- 10 dozen plain and embroidered voile and crepe
waists. Regular \$1.50. Sale.....95c
- 5 dozen embroidered and lace trimmed waists. Reg-
ular \$2.50 and \$3.00. Sale \$1.95
- 5 dozen voile and lace waists. Regular \$4.00. Sale
price \$2.95
- 8 dozen silk waists. Regular \$2.75 and \$3.50. Black,
white and colors. Sale \$2.25



Quality Petticoats

Dainty petticoats to match your new suit or gown in
a wide variety of the most exquisite styles. Materials are
of fine silk, jersey, crepe, soft taffeta and messaline.

Considerable Savings Can Be Realized on Coats

Many of our finest weaves this
season figure strongly in this clear-
ance. The style and color tendencies
are so broad and varied that selection
will be easy. Every garment is guar-
anteed as to quality, fit, style and ser-
vice.

- \$14.00 Coats. Special\$6.95
- \$20.00 Coats. Special\$9.75
- \$22.50 Balmocan Coats. Special....\$11.25
- \$25.00 Crepe Poplins, greens and blues.
Special\$12.50
- \$25.00 Fancy Cords, greens and blues.
Special\$12.50
- \$30.00 Fancy models. Special.....\$15.00
- \$35.00 fancy browns and navy mixtures.
Special\$17.50
- \$25.00 Black Taffeta\$17.00
- \$35.00 Black Taffeta\$24.00

- Messaline—all shades—fancy flounces. \$2.95.
Special\$1.95
- \$3.50. Special\$2.65
- \$4.00. Special\$2.95
- \$4.50 Jersey top Petticoats in delicate shades.
Special\$3.45
- \$6.50 Jersey top, close fit in all shades. Spe-
cial\$5.00



Mother and Daughter Will Share Alike on Suit Bargains

Suits of a character to conform to
the fancies of young and old. They
embody all the Parisian style points—
the high waist and cutaway effects,
lace and Oriental collars; kimono and
set-in sleeves, draped and plain skirts.

- 26 Spring and Summer Suits in stripes, checks
and novelty suitings. Plain serges and linen
epongee. Regular \$17.50 to \$25.00. Special at \$7.95
- 26 Spring and Summer Suits, white serge and
whipcord, plain serge, Bedford cord, novelty
suitings and chiffon taffetas suits. Regular \$25.00 to \$37.50. Special. \$10.95
- 30 Spring and Summer Suits in silk poplins,
serges and novelty suitings of all the season's
best cloths. Sold regular \$30.00 to \$40.00. Special \$13.95
- 45 Spring and Summer Suits in all the best
foreign materials. Regular \$45.00 to \$85.00. Special \$21.75
- 55 handsome Suits. Regular price from
\$25.00 to \$65.00—at one-half price.

BURTS' BURTS'

Read the Classified Ads