

UTAH LIGHT'S MODERN SHOPS

Work Begun Saturday on Great Plant for Local Electric System.

LOCATED ON TENTH WARD CAR YARDS

Will Be Fireproof and Roomy; Equipped With New Machinery.

Following out its policy of improvement the Utah Light & Railway on Saturday commenced the construction of two mammoth shops on the Tenth ward square in this city.

The machine shops will be equipped with great overhead cranes to lift a car bodily and place it in any location in the shop desired.

The storehouse will be roomy enough for all supplies while the paint and carpenter shops will also be of the most modern construction and with new equipment.

Both buildings will be solid concrete foundation and constructed with steel trusses and brick throughout.

The buildings will be built to conform to the general architectural design of the other structures on the ground.

Plans are all being prepared in the engineering office of the company at the West Temple street headquarters.

SUMMER PASSENGER TRAVEL AHEAD OF PAST SEASONS

Never in the history of Salt Lake has there been such a summer season for passenger travel.

LEMON RATES STAND UNTIL NOVEMBER 1

WASHINGTON, July 30.—An order has been issued by the Interstate Commerce commission regarding the effective date of the commission's order in the California lemon case from September 1 to November 1.

SANTA FE AIDS KANSAS GRAIN DEALERS

CHICAGO, July 30.—The Santa Fe announced today that the rates on bulk grain from Kansas City, Atchison and St. Joseph, when shipments originated west of these points, would include delivery of half a cent will be given to elevators for performing this service.

Troops Are Ordered Home.

DIXON, Mich., July 30.—General McGurkin in command of the national guard troops stationed here to prevent rioting in connection with the Grand Trunk strike, has ordered the four companies of the first battalion to return home.

First Train Was Crowded.

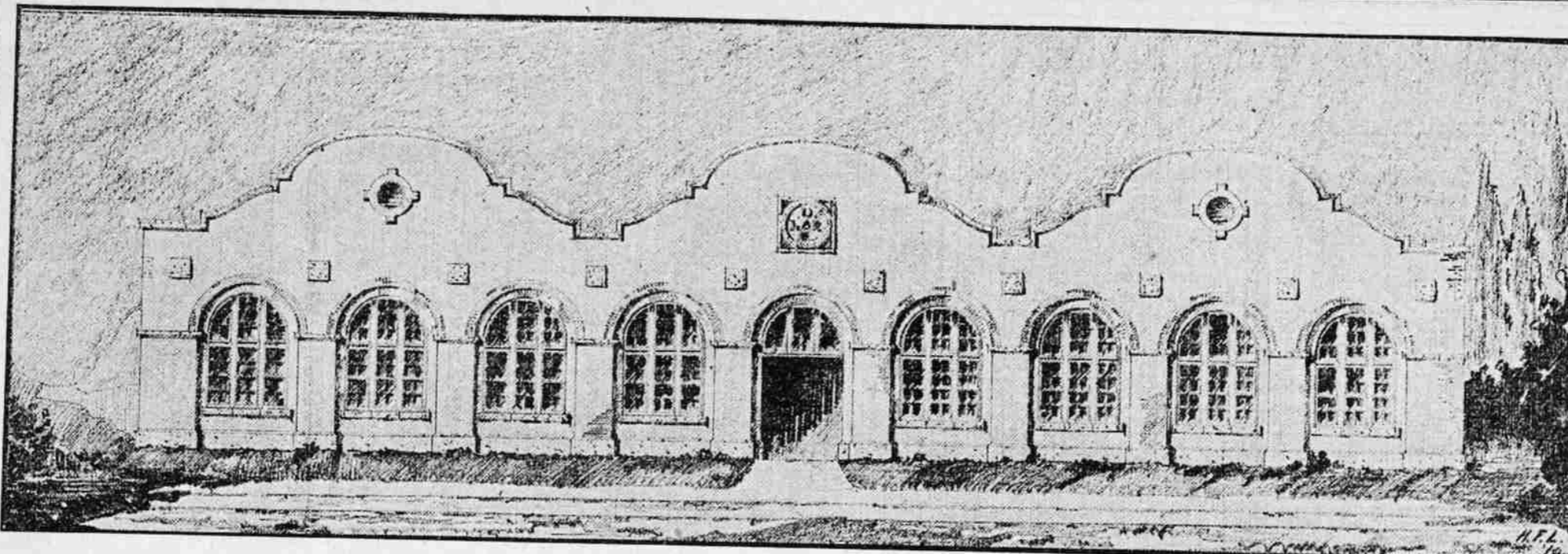
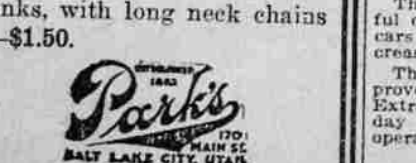
SAN DIEGO, Cal., July 30.—Nearly 2000 people crowded the coaches of the first passenger train to be run over that portion of the San Diego & Arizona railway that has been completed, yesterday.

THE MARK OF A GUARANTEE

Silver Mesh Bags We submit these recent arrivals. They are very new and most attractive.

German Silver, white kid lined—\$2.50 to \$10.00. An especially fine line for—\$5.00.

Also Change Purses, mesh links, with long neck chains—\$1.50.



NEW MACHINE SHOP S, UTAH LIGHT & RAILWAY COMPANY, SALT LAKE CITY.

SANDY-MIDVALE CARS RUN MONDAY

Electric Service to Commence With Sunrise to Lively Southern Towns.

With the rising of the sun over the Wasatch range Monday morning the new electric lines to Sandy and Midvale will be placed in operation.

The route is by the State road for the greater part of the way and just as straight as a line can be built.

The line is laid with new heavy steel and a high-grade copper wire is strung overhead. A substation is located at Cottonwood creek to transform the power for the southern extensions.

SALT LAKE SECURITY INSURES RAILROAD STOCK

Quite an important step was taken Saturday in the affairs of the Iron Mountain, St. George & Grand Canyon railroads.

UTAH SUGGESTS NAMES FOR NEW W. P. TRAIN

Editor Tribune:—Herein please find suggestions for names for the Chicago to Salt Lake train over the new Western Pacific, as follows: Desert Bird, Pacific Header, Price Right, Double Timmer, Western Wonder, Ocean Tinner, Pacific Cut-off.

Railroad Notes.

Yellowstone crowded. San Francisco crowded. Another record excursion Sunday. H. S. O'Neill is in Montana on business.

First Train Was Crowded.

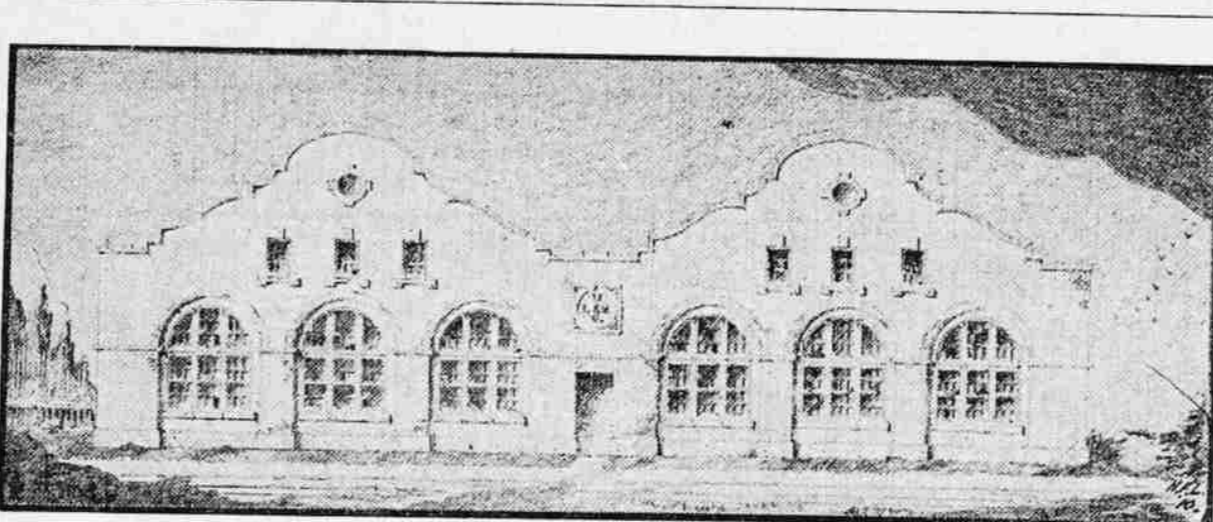
SAN DIEGO, Cal., July 30.—Nearly 2000 people crowded the coaches of the first passenger train to be run over that portion of the San Diego & Arizona railway that has been completed, yesterday.

THE MARK OF A GUARANTEE

Silver Mesh Bags We submit these recent arrivals. They are very new and most attractive.

German Silver, white kid lined—\$2.50 to \$10.00. An especially fine line for—\$5.00.

Also Change Purses, mesh links, with long neck chains—\$1.50.



MODERN STOREHOUSE AND PAINT SHOP FOR UTAH LIGHT & RAILWAY COMPANY.

WESTERN PACIFIC INTO COAST PORTS

New Road Working Out Alliance With Noted Pacific Coast Steamers.

Another important stride is about to be made by the Western Pacific. This is an alliance with the Pacific Coast Steamship company.

The full schedule has been published here until October 1, to the means by which the service will give half hourly cars to and from the city for twelve hours each day and hourly thereafter.

SALT LAKE SECURITY INSURES RAILROAD STOCK

Quite an important step was taken Saturday in the affairs of the Iron Mountain, St. George & Grand Canyon railroads.

UTAH SUGGESTS NAMES FOR NEW W. P. TRAIN

Editor Tribune:—Herein please find suggestions for names for the Chicago to Salt Lake train over the new Western Pacific, as follows: Desert Bird, Pacific Header, Price Right, Double Timmer, Western Wonder, Ocean Tinner, Pacific Cut-off.

Railroad Notes.

Yellowstone crowded. San Francisco crowded. Another record excursion Sunday. H. S. O'Neill is in Montana on business.

First Train Was Crowded.

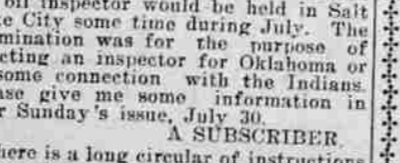
SAN DIEGO, Cal., July 30.—Nearly 2000 people crowded the coaches of the first passenger train to be run over that portion of the San Diego & Arizona railway that has been completed, yesterday.

THE MARK OF A GUARANTEE

Silver Mesh Bags We submit these recent arrivals. They are very new and most attractive.

German Silver, white kid lined—\$2.50 to \$10.00. An especially fine line for—\$5.00.

Also Change Purses, mesh links, with long neck chains—\$1.50.



RELIEF FUND SHOWS REMARKABLE RECORD

According to the regular monthly report of the relief department of the Pennsylvania, issued today, the sum of \$188,110.95 was paid to the members during the month of June.

NOT EVEN MILLIONS CAN BRING CONTENT

Mrs. Phillip Van Volkenburgh Sues Aged Husband for Absolute Divorce.

NEW YORK, July 30.—The initial step in severing the romantic alliance of a \$20,000,000 benefactor and an \$8,000,000 widow, which only a few months ago thrilled fashionable society on Wall street, was taken today by Mrs. Phillip Van Volkenburgh.

No More Wedding Bells.

"No, no, never! I will never marry again. I might get another like Van Volkenburgh, and have I not had misery enough? I got a thousand letters congratulating me for marrying an American. Look how brutally he abuses me. How he changed! It pains me to mention his name."

QUESTIONS AND ANSWERS

Would you kindly give, in Sunday's Question and Answer column, how to send a manuscript, and how the accompanying proper name and address with the same—by an extra note, or how?

ONE LONE NICKEL THE FIRST DEPOSIT

WASHINGTON, July 30.—Although the savings banks have not yet been established, the first deposit has already been received at the W. Hitchcock. The deposit is not a large one—it is a lone 5-cent piece.

DRUEHL & FRANKEN, 271 SOUTH SMITH DRUG CO., THE BUSY CORNER

SMITH DRUG CO. No. 2, 106 SOUTH MAIN STREET

HAWLEY'S HAND SEEN IN THIS

"Katy" to Increase Debt Not to Exceed Sum of \$125,000,000.

NEW YORK, July 30.—Erwin Wider, the cashier of the Russo-Chinese bank agency, who was yesterday arrested and held in \$25,000 bail, but after confessing to defalcations aggregating more than \$500,000, has not tasted food since he was locked up in the Tombs prison.

WRECK KILLS TWO

SALINA, Kan., July 30.—Two brakemen were killed and four other persons are reported dead in a wreck on the Missouri Pacific railway four miles west of Lindsay, Kan. this afternoon.

DEFALCATING CASHIER WIDER ACTS INSANE

NEW YORK, July 30.—Erwin Wider, the cashier of the Russo-Chinese bank agency, who was yesterday arrested and held in \$25,000 bail, but after confessing to defalcations aggregating more than \$500,000, has not tasted food since he was locked up in the Tombs prison.

WHY DO WE HAVE THE LARGEST SODA WATER BUSINESS IN TOWN?

These are the reasons: Our soda water is made right, of the very best fruits and fruit juices obtainable; every item that goes to make up our soda water is of the best quality that money will buy.



SPECIAL PRICES THIS WEEK ON PATENT MEDICINES AND TOILET PREPARATIONS.

DERRAH PLEASED WITH NEW LINE

Western Pacific Official Thoroughly Studied the Terminals at San Francisco.

"We had a very pleasant trip over the Western Pacific," remarked Assistant General Freight Agent S. V. Derrah, who returned Saturday, "and the line was found to be in excellent shape and highly interesting. The scenery is certainly superb and all along the line the stations, stockyards and various other features are well built and ready for business."

In company with Mr. Shotwell I visited all the freight terminals in San Francisco and Oakland and found that the most complete arrangements have been made for handling the traffic and in every way the trip was most instructive and interesting.

NOT EVEN MILLIONS CAN BRING CONTENT

Mrs. Phillip Van Volkenburgh Sues Aged Husband for Absolute Divorce.

NEW YORK, July 30.—The initial step in severing the romantic alliance of a \$20,000,000 benefactor and an \$8,000,000 widow, which only a few months ago thrilled fashionable society on Wall street, was taken today by Mrs. Phillip Van Volkenburgh.

QUESTIONS AND ANSWERS

Would you kindly give, in Sunday's Question and Answer column, how to send a manuscript, and how the accompanying proper name and address with the same—by an extra note, or how?

ONE LONE NICKEL THE FIRST DEPOSIT

WASHINGTON, July 30.—Although the savings banks have not yet been established, the first deposit has already been received at the W. Hitchcock. The deposit is not a large one—it is a lone 5-cent piece.

DRUEHL & FRANKEN, 271 SOUTH SMITH DRUG CO., THE BUSY CORNER

SMITH DRUG CO. No. 2, 106 SOUTH MAIN STREET

FIRST MEETING GOULD OFFICIALS

Rio Grande and Western Pacific Heads Gather in Zion Monday.

STRINGING TIME CARD UTAH TO PACIFIC

Two Daily Trains Each Way and Leave Here Convenient Hours.

Vice President and General Manager H. W. Clark of the Denver & Rio Grande will arrive in the city Sunday evening, with other officials of that line.

A general meeting will be held at which time all the details of stringing the new time card for the Western Pacific and the arrangements for opening the new station and the connections with the Rio Grande will be fully completed.

GIRL BURNS TO DEATH BEFORE MOTHER'S EYES

FACOMA, Wash., July 30.—Olga Margaret Holmberg, aged 3 years and 10 months, daughter of Ole Holmberg of this city, was playing with matches in the back yard about 5 o'clock last night when her dress caught fire and before her mother could reach her every stitch of clothing was burned off and not a spot on her body except the soles of her feet escaped the flames.

Denver & Rio Grande Time Table

Table with 2 columns: Train Name and Time. Includes entries like Depart-Daily, Provo, Midvale, Bingham and Midvale, etc.

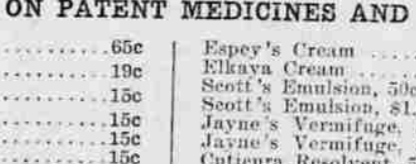
Tribune Want Ads. Bell Main 5200. Independent 360.



Colgate's Violet Toilet Powder. 15c



George's Corn and Bunion Shields for comfort. 19c



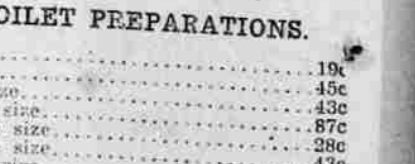
Rexall Charcoal Tablets for sour stomach and bad breath. Large boxes—25c



Colgate's Violet Toilet Powder. 15c



George's Corn and Bunion Shields for comfort. 19c



Rexall Charcoal Tablets for sour stomach and bad breath. Large boxes—25c

DRUEHL & FRANKEN, 271 SOUTH SMITH DRUG CO., THE BUSY CORNER. SMITH DRUG CO. No. 2, 106 SOUTH MAIN STREET. THE Rexall STORES.