

# The Farmville Herald

AND FARMER-LEADER

VOLUME 66

Honor for the Past, Help for the Present, Hope for the Future

FARMVILLE, VIRGINIA, TUESDAY, APRIL 30, 1957

Single Copy 5 cents

Established 1890

NO. 63

## Tax Increase Public Hearing Thursday Morning

\$895,250 Budget For 1957-58 To Be Reviewed

Prince Edward county supervisors will hold a public hearing Thursday on the tentative \$895,250 budget for the 12 months beginning July 1, which includes in its revenue estimates proposed tax increases.

The board has announced publicly its intention of increasing the real estate and personal property levies by 50 cents per \$100 of valuation, and the tax on merchant's capital by 10 cents.

The Thursday session will be moved to the Circuit Court Room if necessary to accommodate persons attending, and the starting time has been set at 10 a.m.

### Deficit Seen

In proposing the additional levies, supervisors stated they are necessary to pay authorized expenses and to "provide for the payment of a deficit incurred during the past several years due to failure earlier to fix a higher rate."

Presently, Prince Edward citizens pay \$2.90 per \$100 valuation on real estate and tangible personal property and 70 cents on merchant's capital. The addition, which the supervisors say is required to keep the county income equal to outlays, would make these \$3.40 on real and personal property and 80 cents on merchant's capital.

The proposed budget is approximately \$22,000 higher than that for the year ending June 30. It provides \$724,351 for schools; \$81,885 for welfare, and about \$89,000 for general county government.

These totals, which incorporate funds to be received from the Commonwealth and federal sources, are up as follows: schools by \$8,100; welfare \$10,336; and county government, \$3,324.

Those represent an increase for 1957-58 of about \$21,000 and must be added to a deficit expected on June 30 of about \$25,000. The supervisors foresee a total additional need, to finance the county in the next 12 months and provide for the deficit, about \$50,000.

Last rise in taxes in the county was in 1952 when personal and real property levies were raised from \$2.40 to the present \$2.90. In the 17 years since 1940 and the beginning of the gradual rise in the cost of doing business, the levies have been raised four times, starting from the 1940 level of \$1.70.

### Local Fund Totals

In that portion of the financing to come from local sources—the tax levies imposed here—the board estimates 1957-58 revenues of \$384,565. From that is to come:

For schools \$348,276, a slight drop over the school board's asking of a year ago; for welfare \$18,426, leaving about \$30,000 for operation of general county government.

These are supplemented in state and federal funds by about \$483,505 for all sources of need, schools, welfare and county government.

## Circus Ticket Sale On In 3 Counties

Tickets for the Clyde Beatty Circus here Thursday may be obtained from school children in Prince Edward, Buckingham and Cumberland counties, according to C. F. Wilson, president of the sponsoring Farmville Lions Club.

The three-ring circus featuring wild animals, will be presented in a fireproof tent at the Five County Fair grounds, with shows at 2 p. m., and 8 p. m.



SOUTHERN CULTURE Institute coffee break. Speakers Doctors Louis D. Rubin, Francis B. Simkins and Gardner Taplin exchange pleasantries during an afternoon pause in the lectures which inaugurated Longwood College's Institute of Southern Culture here Friday.

### Folkways, Literature Scanned

## 3 Lecturers Inaugurate Institute Of Southern Culture At Longwood

Dr. Louis D. Rubin, Jr., associate editor of the Richmond News Leader, told the afternoon session of the Institute of Southern Culture at Longwood College Friday that all of the literature written about the Civil War, "There has not been one really outstanding work of fiction written about the Confederate soldier and his times."

Fiction writers have recorded the events and social order well, but there is no "War and Peace" type book about the South and its army. "The only thing that compares with it in any way, is 'Gone With the Wind,' and this in 'physical size' only, he said.

Dr. Francis B. Simkins, Longwood history professor, stated at the morning lecture session, that Virginia has remained untarnished by outside ways and have maintained their originality and unique folk ways and culture.

At the evening, and concluding lecture of the spring series, Dr. Gardner B. Taplin, associate English professor at Longwood, traced the opinions of Southern literary critics from 1834 until the Civil War, as reported in the "Southern Literary Messenger," on such English writers as Bulwer-Lytton, Dickens, Thackeray, Tennyson, and the Brownings.

Dr. Rubin, speaking before the audience at Longwood College on "The Image of an Army: The Confederate War in Southern Literature," said that the social ideal has been stressed to such an extent in Southern literature that little attention has been paid to the war itself. "The war is not seen in them (fictional characters) as an ordeal in itself, so much as the catastrophe that destroyed anti-bellum life."

What is needed is a protagonist for whom "the war becomes a great personal experience of his life, transforming the individual so that the novelist shows a character developing in the time of stress. Without such a character, the image of (Continued on page 7)

## Prince Edward Exposition Day May 4 Third Event In Southside Celebration

Hostesses To Be At Nine Tour Stops

Memories of Revolutionary educators, debtors in stocks, the last agonizing gasp of the Confederacy and church ushers who prodded nodding parishioners with feathered ticklers will be evoked here Saturday.

That is the day Prince Edward County celebrates vicariously, through a tour of local historic shrines, the 350th anniversary of the first English settlement at Jamestown.

In following the urging of the Commonwealth that localities participate in the state-wide exposition with their own "days," Prince Edward is joining with three Southside counties for a celebration.

Southside Festival Charlotte County opens the Southside version with a tour of old homes and churches Wednesday and Thursday, Friday the actual church yesterday.

Members authorized the building committee, headed by J. Monroe Johns, to spend up to a total of \$56,000. The balance above the addition contract is to be used for alterations and improvements in the present Sunday School building.

The alterations will include a new kitchen and social hall and enlargement of classrooms in the present building.

Johns reported to the congregation during an after-service session that he had been informed by the low bidder that work could be started within three weeks barring delays in steel equipment or other materials. It was also estimated that the fireproof addition could be completed in about six months after start of construction.

The congregation preceded the report of the building committee with a fund-raising effort which embodied provision for gifts to be amortized over a three-year period.

## Vehicle Inspection Starting May 1 Has Added Requirements

The spring motor vehicle inspection period for passenger automobiles opens tomorrow (May 1) and extends through July 1, a State Police announcement today stated.

Several changes in procedure are included in the new inspection. When presented, the inspecting station must immediately remove the old sticker, replacing it with either a new one or a rejection sticker.

Other changes include the inspection of tires for defects or excessive wear, inspection of air conditioners and seat belts and the rejection of patched or repaired mufflers.

Owners whose cars are not approved cannot be forced to accept a rejection sticker but will be in violation of the law if they operate without one of the other, according to the announcement.

The rejection sticker will permit the owner to drive only from one station to another for seven days, provided he desires another station to perform the work.

## Lankford Talk Today

Dr. Francis G. Lankford, Jr., president of Longwood College will be featured in an interview with Med Maxwell today (Tuesday) at 12:15 p. m. over Station WSVS. The Longwood president will outline answers to some pressing educational problems including the teacher shortage.

## State Finals Next Stop For Winners At Area 4-H Contest Here Saturday

The 4-H Area Contest for the East Central District centered at Longwood College Saturday with events sprawling over Prince Edward County from Darlington Heights to Green Bay.

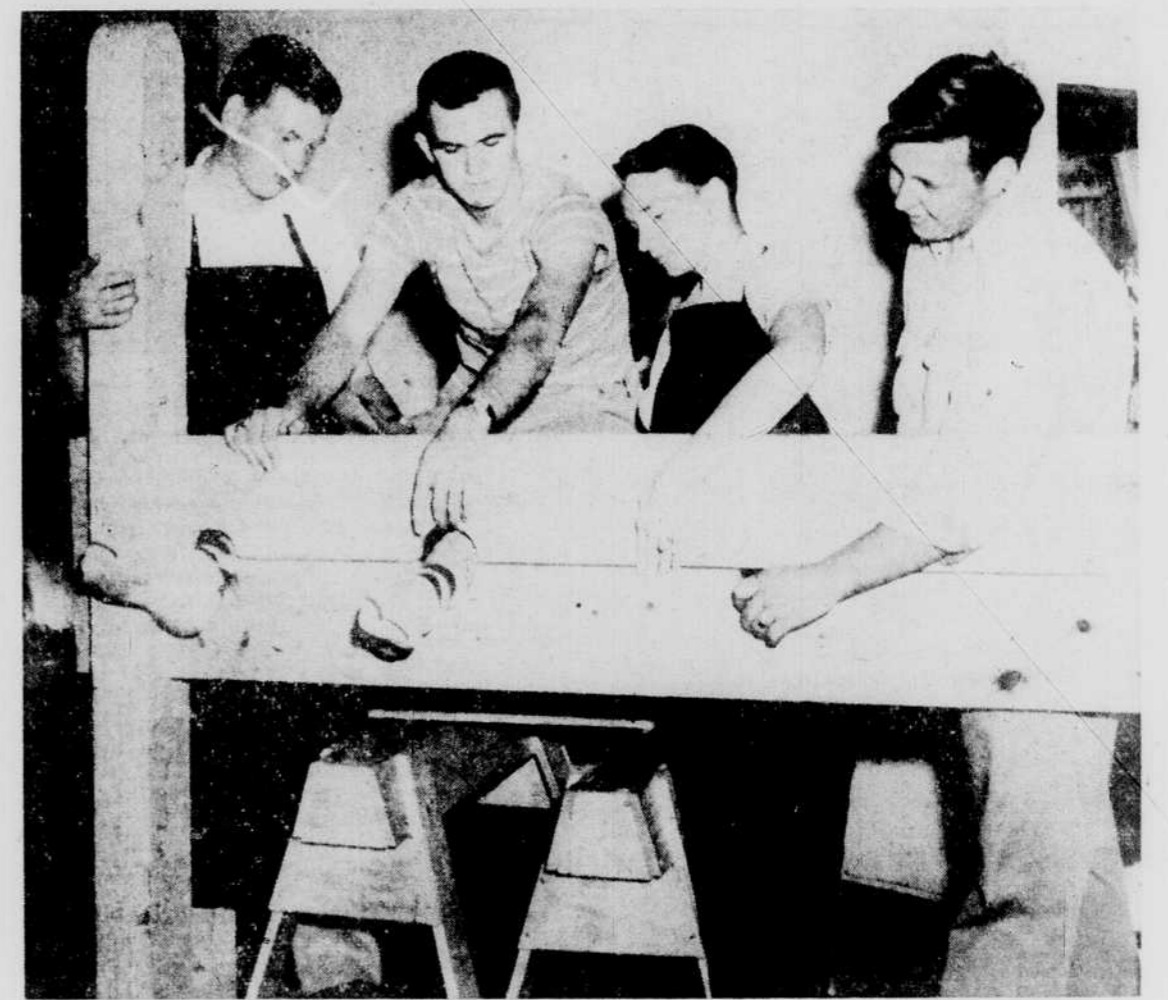
Approximately 145 local winners from 16 counties competed for top honors in 19 separate contests.

The home economics building at Longwood College was headquarters for the girls' activities of bread making, home improvements, etc. Jarman Auditorium was the focal point with land judging, dairy judging, etc., being conducted at various convenient places in Prince Edward County.

The highlight of the day's activities was the awarding of prizes at Jarman Auditorium at 4 p.m. Dr. A. M. DeMuth, president of the Farmville Chamber of Commerce, presented the ribbons.

The two first place winners (blue ribbon winners) will compete at the State 4-H Short Course at VPI June 24-29.

Amelia and Nottoway counties produced the highest number of blue ribbon winners with six first place



DEBTORS' PRISON STOCKS are prepared by FFA chapter members at Worsham High School in preparation for Prince Edward County Day Saturday. Workers are, from left, Earl Southall, L. L. Irving, Jr., George Moore, Jr., and Charles Reece. The youths are making the stocks in the Worsham High School vo-ag shop as a chapter community service project for the year under the direction of Arthur Bryant, supervisor. The stocks will be in "use" at the Worsham debtors' prison.

## 2,000 Visitors Go Through Bank Flowers Later Given To Hospital, Church

More than 2,000 visitors and friends milled through the newly remodeled facilities of the First National Bank Friday evening at the official reception and open-house staged by the bank.

Bank President R. E. Garland and E. W. Sanford, Jr., executive vice-president, expressed their delight in the many compliments bestowed upon the handsome appearance and many modern facilities of the new building.

Besides an opportunity to register for \$175 in savings accounts, each visitor was given a souvenir of the occasion. Orchids and coin purses were given the ladies, while the youngsters were given suitcase banks and the men fold-over coin purses.

Miss Sylvia Garland, daughter of Mr. and Mrs. R. E. Garland, drew the savings account winners Friday morning at 10:30. Winner of the \$100 savings account was Betty Wells, daughter of Mr. and Mrs. L. A. Wells, of Farmville. Mrs. Lucille Reid, of Grace street, Farmville, won the \$50 savings account. The \$25 savings account was won by Mrs. Henry Vaughan, Rt. 1, Farmville.

Flowers, sent by well-wishing businesses and individuals from the community, added a touch of graciousness to the walnut, cream and gray colors that are used extensively throughout the inside of the building. The flowers were later given the Southside Community Hospital and several churches.

Prior to the formal opening (Continued on page 7)

## Allen Named Leader Chest Reserve Used To Complete Agency Payments

Tom A. Allen, of Farmville, will direct the 1957 Prince Edward County Community Chest campaign next October for which a goal will be selected after study by the Chest Budget and Admissions committee.

J. B. Wall, Jr., Chest president, said Allen's appointment, together with selection of a committee to study the proposed budgets of participating agencies and to recommend a campaign goal, was completed during a board of directors session last week.

S. P. Glover was named chairman of the Budgets and Admissions committee and R. F. Crawford, A. N. Fore and T. K. Baldwin were selected as additional committee members.

To Use Reserve Wall said that the Chest board also made the decision to pay all 11 participating agencies their full allotment, despite the fact that the 1956 Chest drive for \$17,000 fell short of success by approximately \$3,000.

The difference will be made up by dipping into the Chest reserve. Wall added that the action "will just about exhaust the reserve."

The board members were encouraged by the enthusiasm of Allen, the campaign leader, who is general superintendent at the Farmville plant of Craddock-Terry Shoe Corporation.

Confidence Felt Asking for and being offered the full cooperation of the board of directors, Allen said "with your support and that of the good people of our community and county, I feel certain we'll work (Continued on page 7)

## Hospital Asks Voluntary Action Letter Appeal Promptness Sought

An effort to raise \$45,000 to complete the Southside Community Hospital is in progress throughout this nine-county area on three fronts. Personal calls are being made by special committees and the Junior Chamber of Commerce members throughout the immediate area. Last Thursday 4,000 letters of appeal were sent to friends in the outlying counties.

"We hope and pray that the friends of the hospital represented by these letters will respond promptly," said W. C. Fitzpatrick, general campaign chairman. "I know that each of them will wish to have a share in this undertaking."

"Due to lack of time, we are depending upon this appeal by mail to many of our friends in the outlying area, and no personal call will be made. We trust that you will voluntarily mail your contribution to the hospital expansion fund in the self-addressed envelope provided in the letter. The hospital needs your help, large or small, in this campaign. Please mail your pledge cards today," he said.

Radio Appeal Special programs will be broadcast over Radio Station WJFO at 9:05 o'clock each morning, Monday through Friday of this week. W. C. Fitzpatrick was heard Monday morning, to be followed by Mrs. Bennett T. Taylor, member of the hospital's board, on Tuesday; Dr. H. C. Alexander, president of the medical staff, on Wednesday; Joseph H. James, administrator, on Thursday, and Vernon (Continued on page 7)



DRESS REVUE CONTESTANTS at the area 4-H contest. Among the participants were (left to right): Gloria Newton, Buckingham (fourth place winner); Betty Lloyd Irving, Worsham; Peggy Childress, Amelia (first place); Sunny Martin, Cumberland (second place); and Jo Elam, Powhatan (first place). The two first place winners will represent the area at Blacksburg in June.



2,000 VISITORS inspected the new premises of First National Bank at Farmville during the open house last Thursday night. This view is typical of the interested crowds, who visited the premises from 7:30 to 10 p.m.