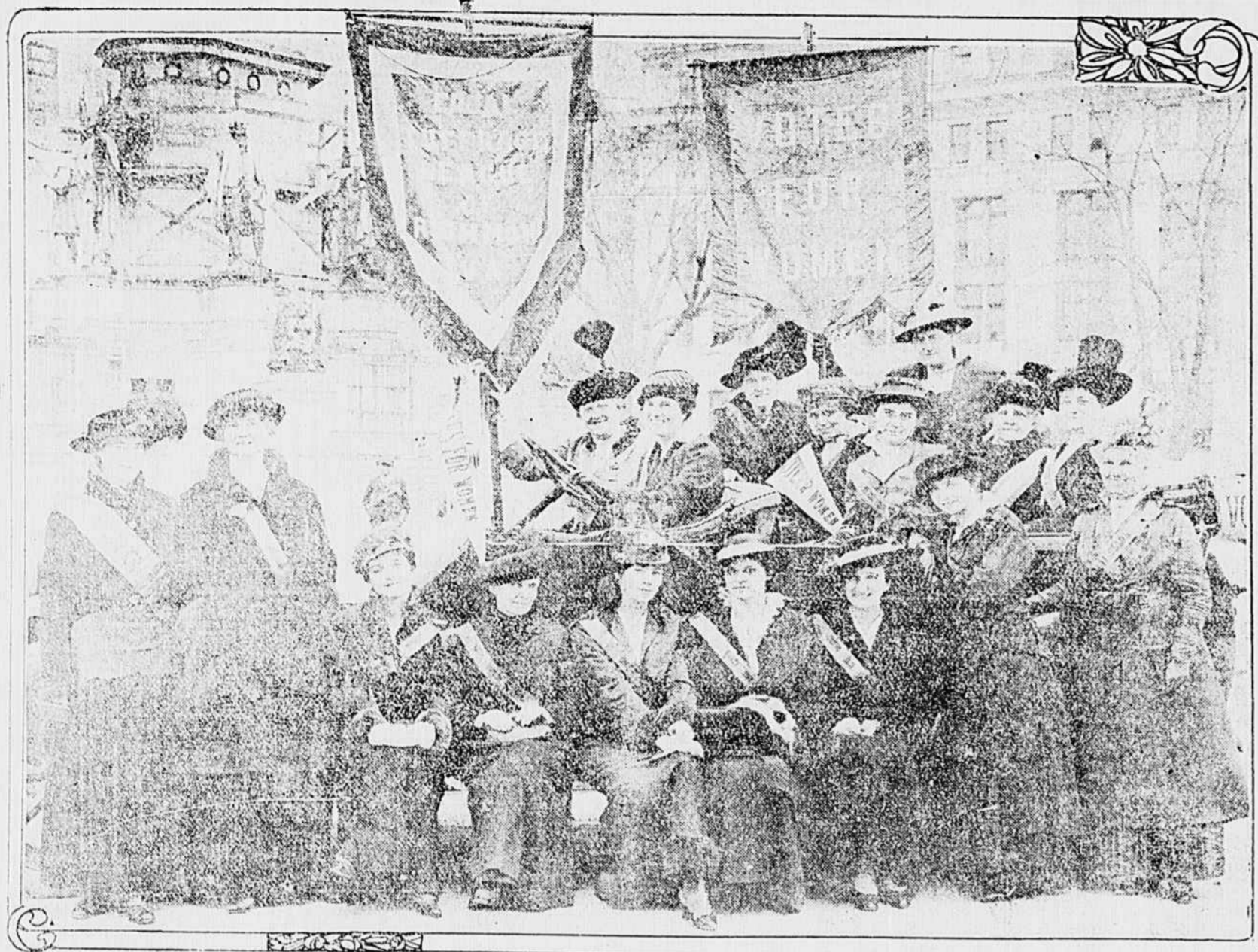


SUFFRAGE COMMITTEE WORKING FOR MOVING PICTURE PLAY



Reading from left to right—in body of car—Mrs. G. Harvey Clarke, Mrs. R. K. Flannagan, Miss Nora Houston, Mrs. John Armistead, Mrs. Alice Overbey Taylor, Mrs. D. E. Hooker, Mrs. Charles W. Meredith and Mrs. Georgia May Johnson, Outside car—Mrs. John Garland Pollard, Mrs. Carter Wornley, Mrs. Earnest Meade, Miss Linda Komer, Mrs. Stuart Reynolds, Mrs. W. H. Urphart and Mrs. W. Foster.

YOUR GIRL AND MINE IN FICTION AND FACT

Suffragists and Social Workers Enlist Public Interest in Her Behalf.

NEED MINIMUM WAGE LAW

Notion Picture of Suffrage Play at Colonial Theatre This Week—Social Service Conference Opens Two-Day Session To-Morrow.

When suffrage was taken from the fancy papers and given place in the news columns of the dailies, the women who are working for their right felt that much had been accomplished. Now the "movies" have taken it up, so women know they are in sight of their goal and have stepped ashore. "Will you let us vote?" and "and a saying, show me you are going to let us vote."

SUFFRAGISTS BUSY EXTENDING THEIR CHIEF

Each suffragist appointed herself a committee of one to tell her and her neighborhood friends about it. In order to make the movement in Capital Square, with banners flying and the yelling streamers proclaiming "Votes for Women" in no uncertain tone.

WHAT RICHMOND IS DOING FOR GIRLS WHO EARN LESS THAN \$8

With waiting for a safe to help straighten in such matters, the women of Richmond have been busy for some time. The State's new legislation has been just passed by the General Assembly.

CULPEPER

(Special to The Times-Dispatch.) On Thursday Mrs. Leo Dano was indicted at a luncheon at the apartments in Madison Street. She was charged with embezzlement to her house agent, Miss Dobbie Terrell, of Lynchburg, Va.

GOVERNOR STARTS TO ADDRESS SOCIAL SERVICE CONFERENCE

A wave of public interest in the welfare of girls has swept over this city following the revelations of conditions in Richmond's segregated vice district, which has just been closed by the authorities, and the several phases of the work that is being done in Richmond and elsewhere will be brought out at the two-day conference of the Social Service Federation, which opens in this city to-morrow.

CREWE

(Special to The Times-Dispatch.) CREWE, VA., February 27.—One of the most enjoyable events of the social season in Crewe was the subscription book party given under the auspices of the Nottoway Chapter, U. W. C., at the residence of Mrs. T. B. Oliver on Thursday evening.

COLUMBIA

(Special to The Times-Dispatch.) COLUMBIA, VA., February 27.—The Columbia Literary Society held its regular meeting in the auditorium of the high school on Friday evening. The program consisted of an "Evening With Our National Songs," a history of each song being given, followed by the song as a chorus.

FILES CURED AT HOME BY NEW ABSORPTION METHOD

Reliable Home Treatment. The ORBINE treatment for the Drink Habit can be used with absolute confidence. It destroys all desire for whiskey, beer or other alcoholic stimulants. Thousands have successfully used it and have been restored to lives of sobriety and usefulness.

BOWLING GREEN

(Special to The Times-Dispatch.) BOWLING GREEN, VA., February 27.—George O. Roper has returned to his home at Williamsport, N. J., after a visit to his sister, Mrs. Sallie W. Rains. Mrs. Joel Hains and Mrs. T. C. Valentine spent this week in Baltimore, Md.

ERUPTION ON SIDE ITCHED FEARFULLY

Felt as Though On Fire. Couldn't Bear Anything to Touch It. Used Cuticura Soap and Cuticura Ointment. Skin Cleared and No Trace of Trouble Left.

DRINK HABIT

Reliable Home Treatment. The ORBINE treatment for the Drink Habit can be used with absolute confidence. It destroys all desire for whiskey, beer or other alcoholic stimulants.

RELIABLE HOME TREATMENT

The ORBINE treatment for the Drink Habit can be used with absolute confidence. It destroys all desire for whiskey, beer or other alcoholic stimulants. Thousands have successfully used it and have been restored to lives of sobriety and usefulness.

AMOSKEAG ROMPER CLOTH 12c yd

Usually sold everywhere at 15c—stripes, checks and solid colors, in all shades; 32 inches wide; suitable for dresses, boys' suits and men's shirts; very strong and durable.

JAPANESE CREPE, 25c yd

A soft-finished fabric in white and colors. Very light in weight; suitable for waists, dresses and undergarments; very good value.

EMBROIDERED ORGANDIES, 39c yd

45 inches wide, in white and tinted grounds with small embroidered figures; suitable for waists and dresses. They'll wash beautifully.

J.B. Mosby & Co.



Tomorrow

will mark the formal opening of this charming Fashion Event. It will prove an inspiration to all women who realize the importance of being scientifically corseted.

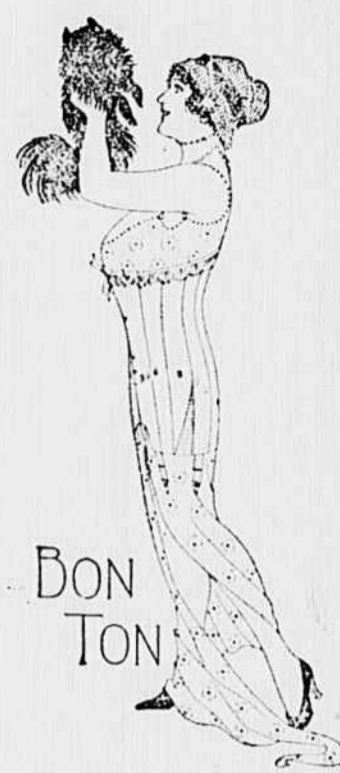
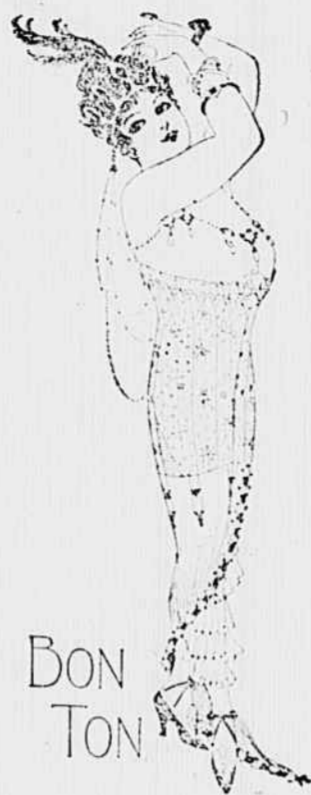
The modish BON TON corsets will be correctly fitted and adjusted on

Living Models

under the direction of an Authority from the Royal Worcester Corset Company who has made the subject of corsets her life study. BON TON corsets, back lace and front lace, will be featured, revealing secrets of vital importance.

We cordially invite all ladies. Cards of entree may be procured at any department. Be sure to come!

Fourth Floor Annex Monday, Tuesday and Wednesday, March 1, 2, 3. 11 A. M. to 12 M. 3 to 4 P. M. 5 to 6 P. M.



Women's New Silk Dresses Are Rushing In

The variety of the new fashions seems literally endless. Prices run from \$12.75 upward.

To-day your attention is called to a large number of styles at \$24.75, including crepe meters, in sand, rose color and the new green. They have the new shirred, high waist-line, chiffon sleeves, chiffon-trimmed waist, lace vest and circular skirt.

Another style at the same price, \$24.75, is shown in Belgian blue and sand taffeta.

This model has an eton front effect, with chiffon sleeves and vest; contrasting color, velvet belt, and the top of the skirt is shirred.

\$29.75 is another favored price—and there are fully a dozen styles at these figures, including taffetas in Belgian blue, brown, sand and dark purple; shirred high waist effect, net sleeves and trimmed with embroidery; straight full skirt.

Another style at the same price is in Belgian blue, battleship gray and tan taffeta. It has a military effect waist, with a chiffon vest and set-in sleeves; yoke skirt.

A third style at \$29.75 is made of crepe meteor. The colors are sand, rose and the new green, beautifully embroidered with silver braid; self-color chiffon sleeve, lace vest, circular skirt.

\$10.98 for Spring Suits, Were \$19.75 to \$39.50

Yes, they were carried over from last season, but they look as spry and snazzy now as when they first arrived, and a little alteration will make the Suits resemble this year's styles.

Silk Dresses \$12.98 that Were \$29.75 to \$35.00

Odd lots of crepe meteor, crepe de chine, satin, moire and pussy willow taffeta dresses, beautifully trimmed with lace, chiffon, embroidery, etc. in two dozen or more styles, have been grouped into one lot to sell for \$12.98. All sizes up to 40, and the prices less than half.

Complete Assortment of New Black Silks

Black is a pronounced favorite in Silks this spring. We have prepared thoroughly for a big season, with the largest quantity and greatest variety of black Silks that will be found in Richmond.

The printed list below is merely suggestive. You must see our Silks and compare them with what you've seen elsewhere at the same prices to thoroughly appreciate the values we are offering you.

- Something very special! Black Japanese Habuta—Four superior qualities in our silk, spot-proof, water-proof, perspiration-proof and fast black. 24 inches wide, 30c yard. 27 inches wide, 50c, 75c and \$1.00 yard. 36 inches wide, 75c, 79c, \$1.00, \$1.25 and \$1.50 yard. Black Gros de Londres—36 inches wide, \$1.50 and \$2.00 yard. Black Bengaline—36 inches wide, \$1.50, \$2.50 and \$3.50 yard. Black Faille—36 inches wide, \$1.50, \$2.00 and \$2.50 yard. 40 inches wide, \$2 yard. Black Crepe de Chine—40 inches wide, \$1.00, \$1.50, \$2.00 and \$3.50 yard. Black Charmeuse—40 inches wide, \$2.00, \$2.50 and \$3.50 yard. Black Crepe Taffeta—40 inches wide, \$2.50 yard. Black Poplin—40 inches wide, \$2.50 and \$3.50 yard. Black Gabardine—40 inches wide, \$3.50 yard.

- Amoskeag Romper Cloth 12c yd. Usually sold everywhere at 15c—stripes, checks and solid colors, in all shades; 32 inches wide; suitable for dresses, boys' suits and men's shirts; very strong and durable. Japanese Crepe, 25c yd. A soft-finished fabric in white and colors. Very light in weight; suitable for waists, dresses and undergarments; very good value. Embroidered Organdies, 39c yd. 45 inches wide, in white and tinted grounds with small embroidered figures; suitable for waists and dresses. They'll wash beautifully.