

BRATTLEBORO PERSONAL

Edward Elmer of Shirley, Mass., is visiting here with friends. Miss Helen Mack is expected this week from Hartford to spend a few weeks' vacation at her home on Frost street.

Friends over Sunday on his way to his home. Mrs. H. W. Sargent, Mr. and Mrs. Fred Smith and Mrs. Waldo Wells went this morning to Rutland to attend the annual meeting of the Grange which opens tomorrow and closes Thursday. Mrs. Sargent goes as a delegate from Protective Grange.

BIRTHS. In Brattleboro, Dec. 9, a son to Robert V. and Frances (Day) Anderson, grand-son to Mrs. Jennie Brockington, and grand-grandson to Mrs. Eliza Day of Jamaica. DEATHS. In Brattleboro (Memorial hospital), Dec. 10, Mrs. Helen M. (Barrus) Phillips, 85, of Putney, widow of George H. Phillips. In Dummerston, Dec. 11, Mrs. Elvira (Hayden) Field, 94, widow of Lorenzo Field of Putney.

BIG WELCOME FOR FOCH. (Continued from Page 1.) Foch through Main street, on account of lack of time, and there is no place where he could be seen by more persons than at the spot chosen for him to speak. The space directly in front of the station will be reserved for American Legion men and Grand Army men, and the space running back from the cliff southwest of the station will be reserved for the public and Parochial school children. The schools will reopen after the exercises, about 9 o'clock. Automobiles and other vehicles are to be kept away from the crowd.

ALL THE CRITICS SAY "Some Girl IS Some Show"

SUBSCRIBE FOR THE REFORMER

HOLIDAY SHOPPERS FIND The Furniture Store

A Most Satisfactory Place to Select Satisfactory Gifts

For here are found things which give lasting pleasure and add to the attractiveness of the home. Beautiful Home Furnishings for the Grown Ups Fascinating Toys and Playthings for the Children

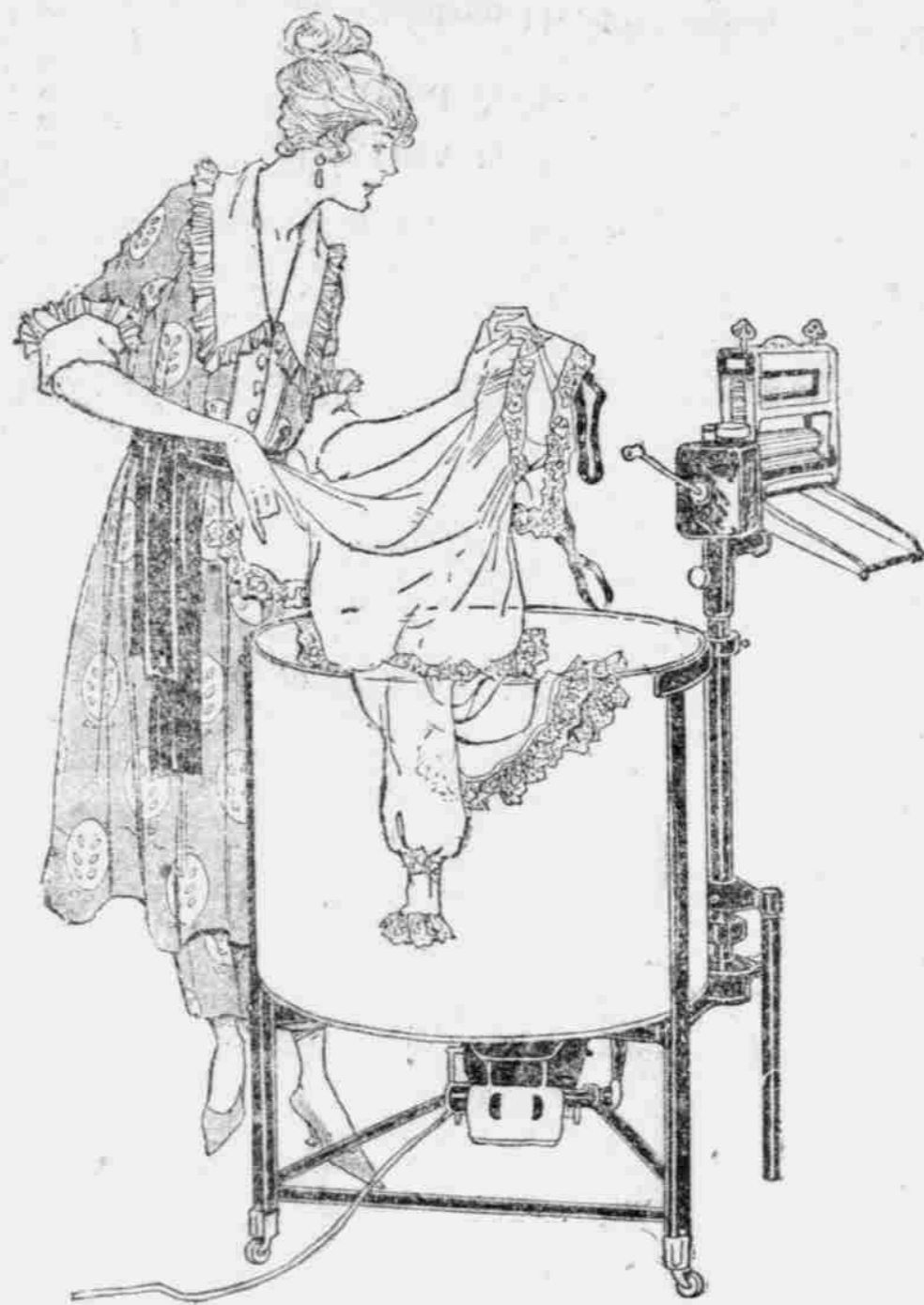
Welcome to Everybody Whether You Buy or Not

EMERSON & SON Elliot Street

Assurance has been given Brattleboro post by the Estey Organ Co., C. E. Bradley Corp., S. A. Smith Mfg. Co., Fort Dummer Mills, White River Chair Co., Vermont Printing Co., E. L. Hildreth & Co., Kestral, Taylor & Co., and various other concerns that their places of business will be closed during the program. Governor Hartness and his staff will be here and Lieut. Gov. Fiske has written that he will be present if he can arrange to do so. Among others present will be Maj. H. Nelson Jackson of Burlington, national vice commander; Max Fisher of Barre, national commander; Bert S. Hyland of Rutland, state commander; and Robert W. McQueen of Vergennes, state finance officer.

BRATTLEBORO MARKETS. Retail. Butter, creamery, lb. .50 Butter, dairy, lb. .55 Potatoes, pk. .30 Olean, nut, lb. .20 Home-made lard, lb. .16 Lard compound, lb. .15 Eggs, local, fresh, doz. .85 Flour, bread, 15 lb. bag 1.25 Flour, pastry, 15 lb. bag 1.25 Sugar, white, lb. .07 Beans, white, lb. .10 Beans, yellow eye .15 Rolled oats, lb. .10 Rice, lb, whole .10 Cornmeal, cwt. 1.00 Cracked corn, cwt. 1.00 Bran, cwt. 2.00 Mixed feed, cwt. 1.75 Provedder, cwt. 1.65 Chickens, cwt. 1.05 Oats, bu. .60 Hay, baled, ton 35.00 Bacon, lb. .45 Bacon, Swift's Premium, lb. .50 Beef roast, lb. 30.40 Sirlon steak, lb. .40 Porterhouse steak, lb. .40 Round steak, lb. .30 Pot roast, lb. 12.15 Pork chops, lb. .13 Sausage, lb. .15 Salt pork, lb. .15 Ham, sliced, lb. .50 Lamb, leg, lb. .35 Lamb chops, lb. .35 Veal, steak, lb. .45 Chickens, lb. .45 Fowls, lb. .45 Wholesale. Butter, creamery, lb. .48 Eggs, local, fresh, doz. .75 Chickens, live, lb. .04 Hides, lb. .10 Pork, dressed, lb. .10 Pork, live, lb. .07 Veal, live, lb. .08-1.00 Calfskins, each .50-1.00 Fowls, live, lb. .22

THE HIT OF BRATTLEBORO The Abso-Clean Electric Washing Machine Makes Good in a Day



Demonstrated on the street Saturday. Talked about by hundreds Sunday. Sold by dozens Monday. Additional order placed with the factory for the largest number of washing machines ever shipped into Brattleboro. Free demonstration anywhere at any time. Don't be a slave to a washboard. Let the Abso-Clean—the Wonder machine—set you free.

The Christmas Gift Supreme



P. S. No Cylinder to lift out.

Today PRINCESS THEATRE Tomorrow

Lewis J. Selznick Presents the Big Super Production

"A Man's Home"

From the Play by Anna Richardson and Edmund Breese Acclaimed everywhere as "The Perfect Picture." The most effective photoplay cast ever assembled.

You've Never Seen A Better Cast Harry T. Morey Kathlyn Williams Faire Binney Matt Moore Grace Valentine Roland Bottomley



"A MAN'S HOME" SELZNICK PICTURES.

More Deadly Than the Male

This Female of the Species One of the many remarkable characterizations. SEE—What He Works For—What He Fights For—Where His Love Lies—

"A Man's Home"

The Greatest Domestic Drama Ever Screened Creating a Furor Everywhere—You Ought to See It

MATINEE 2.30. ADMISSION: CHILDREN 10c; ADULTS 22c. EVENING 7 AND 8.45. CHILDREN 15c; ADULTS 28c



Wednesday—Ethel Clayton in "Exit, the Vamp"

One of the not hobbies of Queen Helena of Italy is collecting curious and historic garments. Among the historic items of her collection are the shoes worn by Mary Queen of Scots on the scaffold, a pair of rough wooden shoes which once belonged to Joan of Arc, and the dainty shoes once worn by the beautiful but ill-fated Marie Antoinette.

Toys! Toys! Toys!

- Games Kodaks Skates Snow Shoes Skis Razors Knives Flash Lights Camp Grates Footballs Tennis Rackets

See Fred Harris's Ski Model in our window

Our store is closed from 7-50 till 8.30 Tuesday morning.

H. M. WOOD The Old Reliable Sporting Goods Man

LATCHIS THEATRE

Monday and Tuesday Presents LOUIS B. MAYER'S BIG SUPER SPECIAL

"The Woman in His House"

A MASTERPIECE THAT HITS NEAR HOME. IF "THE WOMAN IN HIS HOUSE" BRINGS ONE HUSBAND AND ONE WIFE TO HAPPINESS TOGETHER THEN IT IS THE ONLY MOTION PICTURE IN THE WORLD.

A WIFE TO BE LOVED OR JUST A WOMAN IN HIS HOUSE?

Who can resist this wonderful story of the love that girdles the earth? It holds a woman back from the brink of destruction; it awakens a man to the love he has lost; it fans the flickering flame of life in a child; it triumphs where science fails.

IT'S MOTHER LOVE—THE GRANDEST LOVE IN THE WORLD

More convincing and moving than "The Miracle Man." The most powerful exemplification of the Divine force of Mother-Love ever penned. It ranks with the few great pictures of the film world.—Washington Post.

A screen achievement enacted by an All Star Cast, including Ramsay Wallace, Thomas Holding, Mildred Harris, Gareth Hughes and the screen's most delightful child actor, Dick Hendricks.

MONDAY EXTRA Latest News

TUESDAY EXTRA Kineto Review

Matinee 2.30. Children 11c, 17c; Adults 17c, 22c, 28c Evening 7 and 8.50. Children 11c, 17c; Adults 22c, 28c

LATCHIS THEATRE

The House of Bigger, Better Pictures