

INSURANCE AGENT
WINS PROMOTION

M. A. Dukes Appointed
Head of Company's
Industrial Division

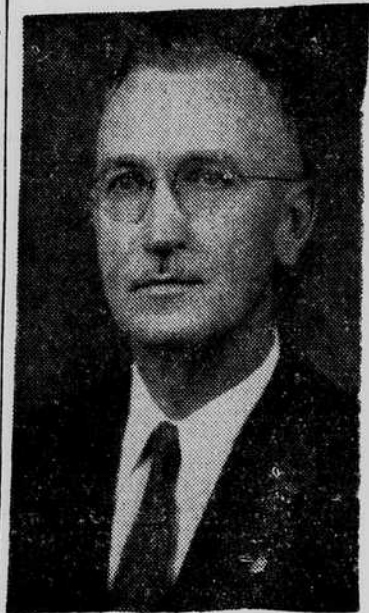
M. A. Dukes, 306 S. 18th street, has been appointed to the position of manager of the Wilmington district, industrial division, of the Pilot Life Insurance company, effective July 6. C. B. Lynch, superintendent of agencies for the company announced yesterday in Greensboro.

Dukes, who was assistant manager under the late Grover C. Edge, has been acting as manager since May 29, the date of Mr. Edge's death.

W. A. McGirt of Wilmington is general agent of the company's ordinary department in the city.

The new manager is also secretary of the Wilmington Life Underwriters association with offices in the Murchison building.

Elevated



M. A. DUKES

Exchanges All Take
Holiday On Saturday

NEW YORK, June 29.—(P)—All leading commodity and security exchanges, with the exception of grain markets, were closed today as the New York, New Orleans and Chicago Cotton exchanges inaugurated a Saturday recess for the summer.

Major domestic security and commodity exchanges will also suspend operations on Thursday, July 4, in observance of Independence day. The New York Wool exchange will carry the holiday through the week-end by closing on Friday, July 5. Canadian and European markets will function as usual.

On July 1, all Canadian exchanges will close for Dominion Day. Markets affected will include all stock exchanges, the Winnipeg grain exchange, and commodity markets in Montreal and Toronto.

Unlisted
Securities

These bid and asked quotations represent prices at which one or more dealers, members of the National Association of Securities Dealers, Inc., would trade with the general public at the time the quotations were gathered, 12 noon Thursday, June 27.

	BID	ASK
Acme Alum Alloys Com.	19 3-4	20 3-4
Acme Alum Alloys Pfd.	39 1-2	41 1-2
Ala Grit Sou RR	129	
American Bakeries	31 1-2	34
American Casualty	11 1-2	12 1-2
American Enka	104 1-2	107
American Hardware	43	45
Amer. Trust (Charlotte)	735	750
Am Yarn & Proc Com.	27	27 3-4
Bassett Furn Ind	37	39
Bausch & Lomb Op.	38	40
Bird & Son	22 1-2	23 1-2
Blue Bell	91	95
Butler's New Com	10	12
Butler's 6 1/2 Pfd.	53 1-2	55 1-2
Carolina Insurance	38 1-2	40
Caro Pwd & Lt \$5 Pfd.	120	122
Chadbourne Hos Com.	24	25
Cleveland Cliffs \$5 Pfd.	101 1-2	102
Coble Dairy 5 1/2 Pfd.	51	52 1-2
Colonial Mills Com	45	47
Colonial Stores New Com	27 1-2	28 1-4
Colonial Stores 4 1/2 Pfd.	51	52
Crescent Pkg Mfg	42	44
Dixie Home Stores	22 1-2	23 1-2
Dwight Mfg	33 3-4	35 3-4
Eastern Corp	19 3-4	21 1-4
Empire District Elec	21	22 1-4
Erwin Co Mills Com	49	51
Erwin Co Mills 6 1/2 Pfd.	112	114
Foremost Dairies Com	22 1-2	23 1-2
Foremost Dairies 6 1/2 Pfd.	51	52
Gambie Bros Com	17	18
Garfinckel, Julius Com.	31	33
Giddings & Lewis Mach	16 3-4	17 3-4
Grinnell Corp	35	37
Gruen Watch	23 3-4	24 1-2
Hanes, PH Knit Cl B Com	25	26 1-4
Jeff Stand Life Ins.	36 1-2	37 1-2
Larkwood Hos 5 1-2 Pfd.	106	108
Life & Casualty Ins.	28 1-2	29 1-2
May-McEwen Kaiser	104	106
Morganthal Life Ins	43	45
Nat. Container 4 3-4 Pfd.	51	52
National Mallison	20 1-2	21 1-2
New Britain Machine	50 1-2	52 1-2
N. C. Railroad	192 1-2	194
Northwestern Nat. Life	19 1-2	20 1-2
Occidental Life Ins	5 1-8	5 3-8
Peninsula Telephone	70	72
Piedmont & North, RR	70	72
Pilot Full Fash Com	13	14
Riverside & Dan Com.	108 1-2	110 1-2
Riverside & Dan 6 1/2 Pfd.	112	114
Rose's 5-10-25c	54 1-2	57 1-2
Rowan Cotton Mills	230	232
Saco-Lowell Shops	49	50
Scott & Williams	86	88
Seaboard Finance Pfd	40	42
See Life & Trust Co	48 1-2	50
Solar Aircraft Pfd	25	27
Sonoco Products	27	29
South Atlantic Gas	13 1-4	14 1-2
Southern Webbing Mills	14	15
Standard Forgings	14	14 3-4
Standard Stoker Com	35	37
Stonecutter Mills "B"	14 1-2	15 1-2
Talon, Inc	49 1-4	51 1-4
Textiles, Inc. Com	20 1-2	21 1-2
Textiles, Inc. 4 1/2 Pfd.	23 1-2	24 1-2
Thiokol Corporation	3 7-8	4 3-8
Trion Co. 4 1/2 Pfd	105	107
U. S. Sugar	9 3-4	10 3-4
Wachovia Band & Tr.	86	88
Washington Mills	245	247

POLICE GUARD HOSPITAL

TYLER, Tex., June 29.—(P)—Fearing mob action, police today threw a cordon around a Tyler hospital where doctors worked to save the life of Jimmy McClain, 27-year-old Negro wounded in a gun battle during his capture in connection with the slaying of a Tyler policeman. A mob that started forming in front of the Tyler railroad station following news of the Negro's capture was dispersed by city police.

SAYS REDDIN GOT
TOP SECRET DATA

Spy Trial Hears Report Of
Selling Information To
Russian Officer

SEATTLE, June 29.—(P)—Capt. Homer N. WaMin, supervisor of shipbuilding for the 13th naval district, told a Federal district court jury today that all data on the new design destroyer tender Yellowstone which Herbert Kennedy, Marine engineer, testified he sold to Russian Naval Lt. Nicolai G. Reddin could have been used to advantage of a foreign nation.

In a quietly dramatic courtroom scene in Lt. Reddin's espionage-conspiracy trial, Captain Wallin took up Kennedy's longhand copy of "confidential information" he said Reddin bought for \$250 and scanned it sentence by sentence.

It covered "restricted" information on the Yellowstone's general specifications, its auxiliary machinery and the dock trials of its propulsion machinery.

Auto Believed Used
In Jail Break Here
Found In Hallsboro

The automobile in which Jack Bryant, 27, is alleged to have stolen Thursday morning following his escape from the New Hanover county jail, was located last night in Hallsboro, near Whiteville, according to Wilmington police.

Bryant, the object of a three-state search, walked away from the jail Thursday morning after posing as a fellow prisoner.

He had been held in jail since April 20 when he was brought to Wilmington from Houston, Texas, in connection with the breaking into of Kingoff's Jewelry store Jan. 15.

CHICAGO GRAIN

CHICAGO, June 29.—(P)—Presidential veto of the OPA extension bill created an active and higher oats futures market today, although extreme gains ranging to 3 cents a bushel were sharply reduced immediately before the close.

"Shorts" ran for cover when the veto announcement was made. They pushed all deliveries to ceilings or within minor fractions of that level. Commission houses had heavy waiting orders to sell around maximums and when these were dumped on the market prices turned downward.

While July oats remained unchanged at 88 cent maximum, final prices on other deliveries were 1-4-1-8 higher than yesterday's finish. Corn was bid at \$1.46 1-2 and barley at \$1.35 1-2, the ceiling. At Winnipeg all rye options jumped the 5 cent daily limit on buying which came partly from American interests.

The Presidential veto came late in the market's session and created the most active trading in several months during the final 15 minutes. Although rumors that a veto was forthcoming had been widespread, the trade generally was surprised as it had been felt the legislation would be accepted by the President.

Offerings of cash oats continued fairly large but did not have much effect on futures prices in view of legislative developments. Purchases for future delivery were placed at 352,000 bushels. All the grain offered was new crop oats. A car of No. 2 red wheat arrived here from Southern Illinois, the first of the season from this state.

Overnight gains were received in the southwest as well as in parts of North Dakota, Montana and the southern districts of Canada. Parity for wheat on June 15 was \$1.65 against \$1.63 a month earlier, while corn advanced to \$1.20 from \$1.18. There were trade reports farmers were feeding new wheat to livestock in the southwest.

GRAIN RANGE

	Open	High	Low	Close
CORN—				
Jan	88	88	88	1.46 1/2
Mar	88	88	88	1.46 1/2
OATS—				
Jul	88	88	88	88
Aug	86	88	86	86 1/2
Sep	85	87 1/2	84 1/2	85 1/2
Nov	85 1/2	87 1/2	84 1/2	85 3/4
Dec	85 1/2	87 1/2	84 1/2	85 3/4
Mar	85 1/2	88	85 1/2	87
BARLEY—				
Nov	88	88	88	1.35 1/2
Dec	88	88	88	1.35 1/2
Mar	88	88	88	1.35 1/2

CHICAGO LIVESTOCK

CHICAGO, June 29.—(P)—(U.S.D.A.)—Salable hogs 200 (estimated) total not given; market nominally steady; top 14.85.

Salable cattle 200 (estimated); total not given; compared week ago general market very uneven, with closing trade lower and price ranges on all classes emphatically wider than week earlier; strictly choice fed steers and long yearlings steady; approximately 125 loads brought 18.00 during week; several loads finished heifers at price; low-choice steers and heifers 25 lower; medium and good kinds generally 50 off, instances more; even choice light steers and heifers under pressure at close when eastern shipper demand narrowed; considerably more grassy and warmed-up light steers and heifers in crop this week, these normally going on local account; but local killers again practically out of market; beef cows 25-50, mostly 50 lower; canners and cutters weak to 25 lower; bulls 50-75 down; vealers steady; stock cattle active early in week at 15.25-17.25 mostly, but closed weak to 50, mostly 25-50 lower.

Completes Training



Pvt. Raymond L. Smith, Jr., former New Hanover high school football player, has completed his basic training at Fort Knox, Ky., and is now home on leave before reporting to California for service in Japan.

Negro Who Escaped
Wilmington Officers
Committed To Asylum

MANNING, S. C., June 23.—Isaiah Hunter, 19-year-old Clarendon county Negro, has been confined to State asylum, Columbia, after being picked up in front of the courthouse here Thursday, it was announced by Sheriff F. L. Overby.

The youth escaped from Sheriff Deputy Charles Snow and J. Cranmer Cool, Alcoholic Beverage Control policeman, of Wilmington, N. C., last Wednesday while the party was enroute to the state line to turn Hunter over to the local sheriff.

Hunter had been in jail in the North Carolina city since June 20 when he was picked up and held on a charge of insanity. Sheriff Overby said arrangements were made with the New Hanover county sheriff's office to deliver the youth to the state line. The escape occurred in Brunswick county when the Negro asked the driver of the vehicle in which he was riding to let him out of the car for a few minutes.

PEPPER GETS FUNDS

WASHINGTON, June 29.—(P)—The senate voted today to provide an additional \$5,000 for a senate labor subcommittee headed by Senator Pepper (D-Fla) to continue to August 1 its study of national health needs.

London Estimates
Effect Of 'A' Bomb

LONDON, June 29.—(P)—One hundred thousand persons would be killed or injured, and 300,000 others would be rendered homeless by the explosion of one atomic bomb over a large British city, a British mission reported today.

Summarizing damage and death caused by the American atomic bombs dropped on Hiroshima and Nagasaki the mission put its findings into a somber calculation of equivalent damage if the same type of weapon were used against the United Kingdom.

It estimated: 50,000 persons would be killed instantly or die from internal injuries within eight weeks; another 50,000 would require extended hospital treatment; 100,000 non-casualties would be homeless permanently, or for the months required to carry out major repairs; 200,000 would be temporarily homeless pending lesser repairs.

Uncle Sam receives 500 applications for government jobs daily.

Roaches! Roaches!

Kill Your Roaches With

Shepard's Guaranteed

Roach Killer.

Manufactured By

JOS. C. SHEPARD

WILMINGTON, N. C.

On Sale At These Stores:

- Jarman Drug Store.
- Lane's Drug Store.
- Futrell's Drug Store.
- Saunders Drug Store.
- Greenfield Drug Store.
- T. W. Wood & Sons Seed Store.
- Carl Marshburn Grocery.
- Paul Marshburn Grocery.
- J. H. Herring Grocery.
- Harrelson Grocery.
- Mayhan Grocery.
- Overton Grocery.
- George's Food Store.
- Lovell's Grocery.
- L. L. Mills Grocery.
- W. D. Mills Grocery.
- S. D. Bordeaux Grocery.
- Ideal Open Air Market.
- Open Air Market.
- Super Open Air Market.
- Batson's Grocery, Sunset Park.
- E. C. Robinson, Carolina Beach Hwy.
- Johnson Drug Store, Jacksonville.
- Ketchum Drug Store, Jacksonville.
- Bunch Drug Store, Carolina Beach.
- Seashore Drugs, Carolina Beach.
- Seagull Drug Store, Carolina Beach.
- Bane's Grocery Store, Carolina Beach.
- Jones Grocery, Carolina Beach.
- Piner Grocery, Junction.
- Southland Grocery.
- 7-Mile Grocery.
- Finlay Carr, Wallace.
- Warsaw Drug Co., Warsaw.
- Joe Brown Grocery.
- Guarantee Food Store, Southport.
- Bokenhagen Grocery.
- Ellis Meyers, Fairbluff—Ellis Meyers, Whiteville. A. A. Hobbs.

Another REED'S Creation...



"The Duchess" 97.50 (Fed. Tax Inc.)

Another famous REED'S Creation. Designed for and by REED'S craftsmen and artists in their own factory. 14 Karat natural gold band in an exquisite setting with three lovely diamonds. This is an unusual diamond opportunity.

Wilmington's Only Diamond Importers

REED'S Jewelers import their own diamonds and make up their own rings. For that reason you may be assured that when you purchase a REED'S diamond you are getting the best! It is fully guaranteed and offers you savings up to 30% of current market prices.

Deferred Payment Plan Arranged
No Interest—No Carrying Charge
Remember—REED'S Diamonds Are Guaranteed



Dial 2-3311 For Newspaper Service

Anchor HARDWARE CO.
Corner Front & Dock sts. Dial 5043

Do YOU
Need Money
To
Remodel or Repair Your Home?

Due to building restrictions and material shortages it may be some time before you are able to build the home you've been planning. So make your present home give you maximum comfort and convenience. NOW, by adding a room or so or making necessary repairs. If you've haven't the necessary cash to make the repairs you need, drop by and see one of the officers of our bank. You'll get friendly, courteous service and expert financial advice and assistance.

Borrow Where It Costs You Less...

There are no hidden "service charges" or extra costs in a Morris Plan Bank Loan. On an FHA improvement loan you pay only 5% interest and the table below shows you just how your payments may be arranged.

Amount to Finance	Monthly Payments 12 Months	Monthly Payments 24 Months	Monthly Payments 36 Months
100	8.78	4.59	3.20
200	17.55	9.18	6.39
300	26.32	13.77	9.59
500	43.86	22.95	15.97
1,000	87.72	45.89	31.94

Maximum Amount \$2,500.—5% Interest Rate—No Security required other than the property owners signature.

Morris Plan Bank
OF WILMINGTON
Member Federal Deposit Insurance Corp.

1888 1946
THE WILMINGTON SAVINGS AND TRUST CO.
Wilmington, N. C.
June 29, 1946

RESOURCES

Cash in Vault and Due from Banks	\$ 6,544,655.12
United States Government Bonds, Notes and Certificates of Indebtedness	12,217,981.64
Other Bonds	27,130.00
Stock in Federal Reserve Bank	30,000.00
Loans and Discounts	5,063,682.22
Advances to Trusts	3,000.00
Banking House, Furniture and Fixtures	68,490.52
Earned Income on Loans and Investments	44,508.79
Customers' Liability Account Letters of Credit and Acceptance	5,000.00
TOTAL	\$24,004,448.29

LIABILITIES

Capital	\$ 300,000.00
Surplus	700,000.00
Undivided Profits	362,038.51
TOTAL	\$ 1,362,038.51
Reserve for Contingencies	\$ 100,000.00
Reserve for Unearned Discount	9,864.61
Reserve for Interest Accrued on Time Deposits	13,860.83
Reserve for Taxes and Federal Deposit Insurance	81,390.71
Dividends Uncalled For	11,529.10
Cashier's Checks	45,211.40
Certified Checks	49,661.06
Deposits	22,325,892.07
Letters of Credit and Acceptance	5,000.00
TOTAL	\$24,004,448.29

MEMBER FEDERAL RESERVE SYSTEM
AND
FEDERAL DEPOSIT INSURANCE CORPORATION