

SUMMER RATES OAHU RAILWAY and HALEIWA HOTEL

Thirty-day excursion tickets between Honolulu and Waialua, Haleiwa or Kahuku. First-class, \$2.15; second-class, \$1.80. Special weekly rates at Hotel during summer months, \$25.00. Splendid bathing, golf, tennis, glass-bottom boats, rowing, pool. An ideal vacation resort.

Oahu Railway-Haleiwa Hotel

Homes For Sale



\$4,500—Nuuanu—Two new houses with good views of Country Club, the Pali, and the ocean. Lot 100 by 100 feet. A two-story house and a bungalow. Rentals, \$52.50 per month. Will sell separately.

\$3,000—A very fine Makiki Round-Top lot now listed for the first time. 1.4 acres partially improved, terraced, growing lawn and fruit trees, garage with concrete floor. View and climate very fine.

\$4000—Makiki Heights—An elegant building site of one acre in the city's choicest residence section. Superb outlook.

\$3750—Alexander St.—Lot 100 by 200 feet. A 3-bedroom house. Room at rear for 2 additional cottages. A home and an investment in the best of rent districts.

\$6000 Furnished, \$5500 Unfurnished—Makiki—120-foot front, contains a half acre. A 2-story, 4-bedroom house. Furniture consists of elegant mahogany and koa pieces, fine rugs and complete equipment.

\$7000—Puunui—A 2-story 4-bedroom house one block from carline. Lot 75x125 feet. Garage and servants' quarters.

\$3500—Kaimuki—A short block from the carline—on Sixth Ave. Lot 150 feet street front by 100 feet deep. A two-bedroom modern bungalow, garage and servants' quarters.

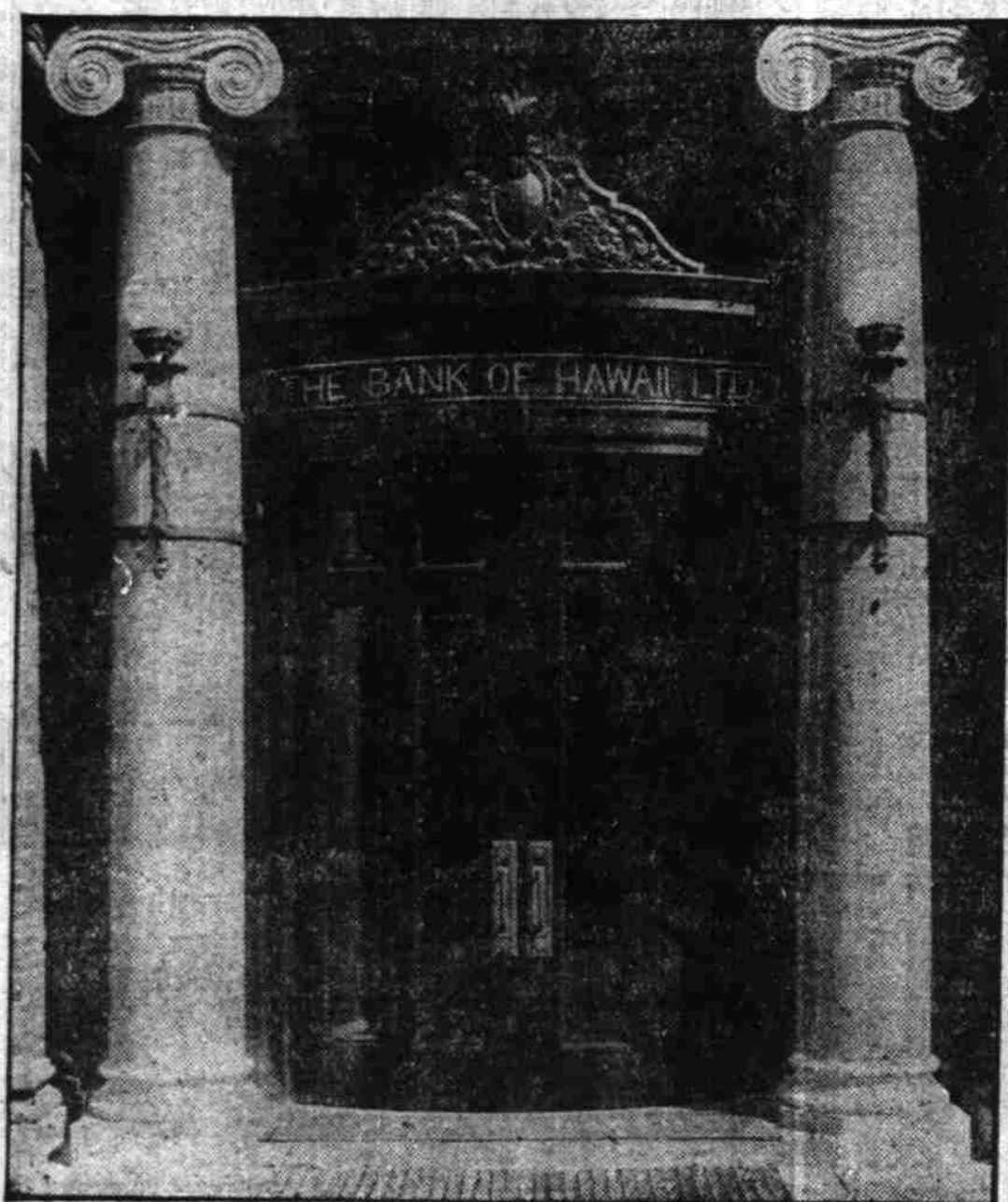
\$3750—Nuuanu—A 3-bedroom bungalow, garage with concrete floor, fern house, cement walks, good lawn, 100 feet street front. Convenient, roomy, new, and in perfect condition.

\$2300—Puunui—Three very attractive little homes in this cool residence district. Each has 2 bedrooms. New and up-to-date. Your choice for \$2300.

Hawaiian Trust Company, Limited

PHONE 1255

120 So. King St.



Capital, Surplus and
Undivided Profits
\$1,450,000.00

BANK OF HAWAII, LTD.

Fort Street at Merchant

Honolulu

Branches at
Waipahu, Oahu
Lihue, Kauai

C. H. Cooke, President
A. Lewis, Jr., Vice-President and Manager
F. B. Damon, Cashier

LATEST POPULAR FICTION AND WAR BOOKS

AT PATTEN'S, 17 HOTEL ST.

"Neighbors," by Kingsley.
"Definite Object," by Farnol.
"Amarilly in Love," by Maniates.
"Cinema Murder," by Oppenheim.
"Red Pepper's Patients," by Richmond.
"Scandal," by Hamilton.
"Indian Drum," by McHarg & Balmer.
"In Happy Valley," by Fox.
"Soul of the Bishop," by Wells.
"The Mask," by Florence Irwin.
"Beyond," by Galsworthy.
"The White Ladies of Worcester," by Barclay.
"Fanny, Herself," by Edna Ferber.
"Under Fire," by Henri Barbusse.
"We Can't Have Everything," by R. Hughes.
"The Dwelling Place of Light," by Churchill.
"Miss Million's Maid," by Berta Ruck.
"The Long Lane's Turning," by H. E. Rives.
"Temperamental Henry," by Merwin.
"The Heart of Her Highness," by Laughlin.
"The Twice American," by Ingram.
"Wolf Breed," by Gregory.
"The High Heart," by Basil King.
"Salt of the Earth," by Slidewick.
LATEST WAR BOOKS.
"All in It," by Ian Hay.
"On the Right of the British Line," by Capt. Gilbert Nobbs.
"Barbarians," by Chambers.
"The Evidence in the Case," by James M. Beck.
"Fighting Men," by Alden Brooks.
"When the Prussians Came to Poland," by Laura Turoznowicz.
"Obstacles to Peace," by S. S. McClure.
"On the Edge of the War Zone," by Aldrich.—Adv.

**HEINE'S WAIKIKI
TAVERN TONIGHT**
Exceptional good music will be found this evening at the dinner-dance, on the beach at Waikiki, at Heine's Tavern.
You are coming with your friends—make your table reservations by phone "5670." Our special dinners are served from 5:30 to 8. They have made Heine's Tavern famous.—Adv.

SCHOFIELD MASS POSTPONED TOMORROW

For the convenience of those who wish to attend the funeral of the queen tomorrow the masses at Schofield Barracks will be at 7 and 8 a. m.—Adv.

HONOLULU COUNCIL NO. 1, CHIEFS OF HAWAII.

By the High Chief's Command.

All active and honorary chiefs of this council are hereby requested to attend a special and extraordinary session of this council to be held at the Elks' Lodge room, King street, Honolulu, on Sunday, the 18th day of November, A. D. 1917, 9 o'clock in the forenoon, and for the purpose of attending the funeral of her late Majesty Queen Liliuokalani.

Dark clothes, white gloves and capes.

GEO. A. DAVIS,
Presiding Chief and Senior Past Chief
Regent.
E. A. C. LONG,
Chief Recorder.
6946—1t

'Bird of Paradise' To Be Filmed Here By the Lasky Stars

The Jesse S. Lasky Feature Film company is now making arrangements for staging a mammoth motion picture production of Richard W. Tully's "The Bird of Paradise" in the Hawaiian Islands.

The rights to the great motion picture have been secured and the company is figuring on expending \$250,000 in the islands to secure perfection of detail and scenic display.

Sessue Hayakawa, the noted Japanese movie star, who is now on the big island getting scenes for "Hidden Pearls," will probably be starred in the venture.

Some expert filming is expected to be done in portraying the different scenes that enter into the Tully composition, especially at the Volcano. Congressman Elston of California, who is a friend of Tully, says that the author told him that so far this year he has cleared up \$162,000 on royalties from his plays. He has two companies on the road this season playing "The Bird of Paradise."

HEINE'S WAIKIKI TAVERN TONIGHT

Exceptional good music will be found this evening at the dinner-dance, on the beach at Waikiki, at Heine's Tavern.
You are coming with your friends—make your table reservations by phone "5670." Our special dinners are served from 5:30 to 8. They have made Heine's Tavern famous.—Adv.

FOUR MORE OFFICERS SUMMONED TO STATES

Four officers of the Hawaiian department are ordered in cabled instructions from Washington to accept assignments on the mainland. They are Captain Jacob L. Devers, 9th Field Artillery; Major H. N. Kerns, Captain Clarence R. Bell, and Captain George R. Callender, Medical Corps. Captain Devers, who is promoted to major through the order, will leave shortly for Fort Sill, Oklahoma, as instructor in the School of Fire.

In consequence of the severance of diplomatic relations between Uruguay and Germany, the federal council of Switzerland has authorized the Swiss legation at Berlin to take charge of Uruguayan interests in Germany.

ADMINISTRATOR'S NOTICE OF SALE OF REAL ESTATE.

Notice is hereby given that pursuant to the order of Honorable C. W. ASHFORD, First Judge of the Circuit Court of the First Judicial Circuit, Territory of Hawaii, made on November 2, 1917, and filed on November 17, 1917, at Chambers, in Probate, in re Estate of Mohole Moanui, deceased, (Probate No. 4729) granting a license so to do, the undersigned, H. M. von Holt, Administrator with the Will Annexed of said Estate of Mohole Moanui, deceased, will offer for sale and will sell at public auction to the highest bidder for cash, at the Auction Rooms of James F. Morgan Company, Limited, Merchant Street, Honolulu, T. H., on Saturday, December 22, A. D. 1917, at 12 o'clock noon, all the right, title, interest, claim and estate of said Mohole Moanui in and to all the following described real estate:

(1) Three-fourths (¾) undivided interest in the lands embraced and described in R. P. 2921, L. C. A. 3190, to Kealina, situate at Kaopa in Kailua, Koolau-poko, Oahu, four (4) apanas, total area 2.138 acres.
(2) One-half (½) undivided interest in Apana 2 of the lands embraced and described in R. P. 2314, L. C. A. 2680, 2 apanas to Ua, the portion in which this one-half (½) interest is claimed is described in partition deed of Kuemanu and Mahoe, dated March 10, 1870, recorded in Liber 29, pages 397-8 and deed of Kuemanu to Hanalei, dated September 23, 1872, recorded in Liber 35, pages 368-9. This land is situated at Kaopa in Kailua, Koolau-poko, Oahu, area belonging to this estate about 1 acre, being smaller half of apana 2 of 2.446 acres.
(3) One-half (½) undivided interest in the lands embraced and described in R. P. 4845, L. C. A. 8990 to Keawe (n' Maluli) 1 Apana. This land is also situated at Kaopa in Kailua, Koolau-poko, Oahu, total area 4.78 acres.
(4) Piece of land and house at Ka-1-1 on the N. W. side of Kalili Street in Honolulu, containing 5000 square feet, being lot No. 26 in Block 8, Kaplani Tract.

Terms of Sale: United States Gold Coin; 10% of purchase price on acceptance of bid; balance on confirmation of sale; deeds at expense of purchaser; sale subject to confirmation by the court.

For further particulars apply to Frank Andrade, attorney for Administrator with the Will Annexed, 844 Kaahumanu Street; James F. Morgan, Company, Ltd., Auctioneers, or to said Administrator.

Dated Honolulu, November 17, 1917.
H. M. VON HOLT,
Administrator with the Will Annexed of the Estate of Mohole Moanui, deceased.

FRANK ANDRADE,
Attorney for Administrator.
6946—Nov. 17, 24, Dec. 1, 8.

HONOLULU RAPID TRANSIT & LAND CO.

From the time the funeral is formed tomorrow until it has passed onto Nuuanu street, King street cars of the Honolulu Rapid Transit & Land Co. will turn back eastward at Punchbowl street and westward at Smith street, and on Nuuanu street will not come below Wylie street while the funeral is on that street.

T. G. BALLENTYNE,
Acting Manager.
Honolulu, Nov. 17, 1917.
6946—1t

Honolulu Stock Exchange

Saturday, Nov. 17.

MERCANTILE—

Alexander & Baldwin	175
C. Brewer & Co.	33
SUGAR—		
Ewa Plantation Co.	28 1/2	29 1/2
Haleiwa Sugar Co.	175
Hawaiian Agr. Co.	41
Haw. Com. & Sugar Co.	40	41
Hawaiian Sugar Co.	33
Honolulu Sugar Co.	4 1/2
Hutchinson Sugar Plant.	180
Kahuku Plantation Co.	180
Koloa Sugar Co.	180	180
McBryde Sugar Co., Ltd.	8	8 1/2
Oahu Sugar Co., Ltd.	29	29 1/2
Ola Sugar Co., Ltd.	5 1/2	6
Onomea Sugar Co.
Paahau Sugar Plant. Co.
Pacific Sugar Mill
Paia Plantation Co.
Peepee Sugar Co.
Pioneer Mill Co.	31	31 1/2
San Carlos Milling Co.
Waialua Agr. Co.	23 1/2	24
Waialuku Sugar Co.	25

MISCELLANEOUS—

Endau Dev. Co., Ltd.
1st Is. Agr. 7 pc. Bd.
2nd Is. Agr. fully paid
Haleiwa Fruit & Pack. Co.
Haleiwa Fruit & Pack. Co.
Hawaiian Ry. 7 pc. A.	5	5 1/2
Hawaiian Ry. 6 pc. B.	3 1/2
Hawaiian Ry. Com.
Hawaiian Electric Co.
Hawaiian Pineapple Co.	39	39 1/2
Hon. Brew. & Malt. Co.	18	18 1/2
Honolulu Gas Co., Ltd.
H. R. T. & L. Co.
Inter-Island S. N. Co.
Mutual Telephone Co.
Oahu Railway & Land Co.
Pahang Rubber Co.
Selama-Dindings Plant.
Selama-Dindings (70 pc.)
Tanjong Olok Rubber Co.

BONDS—

Beach Walk Imp. Dist.
Hamakua Ditch Co.
Hawaiian Ry. 5 pc.	75
Hawaiian Irr. Co., 6s.
Haw. Terr. 4 pc. Refund
Haw. Terr. 4 pc. Pub Imp.
Haw. Terr. Pub. Imp. 4 pc.
Haw. Terr. 3 1/2 pc.	97	100
Hilo Gas Co., Ltd.
Honokaa Sugar Co., 6 pc.	93
Honolulu Gas Co., Ltd., 5s.
Kauai Ry. Co., 6s.
Manoa Imp. Dist. 5 1/2 pc.
McBryde Sugar Co., 5s.
Mutual Telephone 5s.
Oahu Railway & L. Co.
Oahu Sugar Co., 6 pc.
Ola Sugar Co., 6 pc.	97
Pacific Sugar Mill Co., 6s.
San Carlos Milling Co.

Between Boards: Sales: 50, 10, 5
McBryde, 8.
Session Sales: None.
Latest sugar quotation: 96 deg. test,
6.90 cents, or \$133 per ton.

UNLISTED SECURITIES.

Saturday, Nov. 17.

OIL—

Honolulu Con. Oil	3.75	3.85
-------------------	------	------

MINING—

Engels Copper Mining	5.00	5.12 1/2
Mineral Products Co.	.07	.08
Mountain King Mining	.06	.08
Montana Bingham Co.	.48	.49
Madera Mining Co.	.38	.38

Sales: 1100 Madera, .38; 5000 Bingham, .50; 225 Bingham, .49; 750 Bingham, .49; 50 Bingham, .48; 15 Engels, 5.00; 1000 M. Products, .08; 250 M. King, .08; 1050 Hon. Oil, 3.80.

Sugar 6.90cts

Henry Waterhouse Trust Co., Ltd.

Members Honolulu Stock and Bond Exchange
Fort and Merchant Streets
Telephone 1208

NOTICE.

PAYMENT OF WATER RATES.

In accordance with Ordinance No. 91 as amended by Ordinance No. 91 and No. 102 of the City and County of Honolulu, all persons holding water privileges under meter rates are hereby notified that the water rates for the period ending September 30, 1917, are due and payable on the FIRST day of December, 1917.

Upon failure to pay such water rates within THIRTY days thereafter an additional charge of Ten Per Cent will be added.

All privileges upon which rates remain unpaid after January 1, 1917, will be shut off forthwith.

Rates are payable at the office of the Honolulu Water Works, Kaplani Building, Honolulu, Hawaii.

F. G. KIRCHHOFF,
General Manager Honolulu Water and Sewer Department.
Honolulu, Hawaii, Nov. 17, 1917.
6946—Nov. 17, 19, 21, 23, 27, 29.

WANTED.

Will pay cash for a light automobile, if price and car are right. Phone 3172. 6946—4t

HELP WANTED.

Night watchman, American, middle age. Must be sober and steady and able to furnish. Good reference. Address Box 375, Star-Bulletin. 6946—2t

Wanted experienced girl for general housework. Telephone 7475. 6946—1t

FOR SALE.

AUTOMOBILES.

Studebaker Six, 7-passenger, new top. Two new tires on, two extra; complete equipment, in perfect condition. Tel. 800, Watertown. 6946—4t

Dodge Roadster, good condition, good tires, cash or terms. Phone 5559 or call 1617B Young St. 6946—4t

Stocks and Bonds

We execute orders and furnish information on stocks and bonds listed on the New York and Chicago stock exchanges.

Bishop Trust Co., Limited

Bethel Street Phone 3646

HAWAIIAN TRUST CO., Ltd.

Stocks and Bonds Insurance
Real Estate Safe Deposit Vaults
Authorized by law to act as Trustees, Executors, Administrators and Guardians

If You Want

Life, Fire, Marine, Automobile, Tourists' Baggage or Accident Insurance.

CALL UPON

CASTLE & COOKE, Limited

General Insurance Agents

Fort and Merchant Streets

THE YOKOHAMA SPECIE BANK, LIMITED.

Capital subscribed.....yen 4,000,000
Capital paid up.....yen 30,000,000
Reserve funds.....yen 22,100,000
S. AWOKI, Local Manager

E. C. PETERS
210 McCandless Bldg.
Honolulu, T. H.
Stocks, Bonds, Securities, Loans
Negotiated, Trust Estates Managed

P. H. BURNETTE
79 Merchant St. Phone 1846
NOTARY PUBLIC
Commissioner of Deeds
California and New York
Draws: Wills, Deeds, Mortgages and all Legal Documents

LUMBER
Paints, Plumbing Supplies, Building Materials. Prices low. Houses built on installment plan. Choice House Lots for sale
CITY MILL COMPANY, LTD.
Telephone 2478 F. O. Box 951

PACIFIC ENGINEERING COMPANY, LIMITED
Consulting, Designing and Constructing Engineers.
Bridges, Buildings, Concrete Structures, Steel Structures, Sanitary Systems, Reports and Estimates on Projects. Phone 1045.

BURNERS
Distillate, Crude Oil and Kerosene
DURANT-IRVINE CO., LTD.
45 King St. Phone 1962

Bank of Honolulu Ltd.

Fort Street, near Queen
Transacts a General Banking Business.
Invites your account and guarantees safe and efficient service. Exchange, Letters of Credit and Travelers' Checks issued on principal points.
Cable Transfers

Alexander & Baldwin Limited

Sugar Factors
Commission Merchants
and Insurance Agents

Agents for
Hawaiian Commercial & Sugar Company.

Haleiwa Sugar Company.
Paia Plantation Company.
Maui Agricultural Company.
Hawaiian Sugar Company.
Kahului Railroad Company.
McBryde Sugar Company.
Kahului Railroad Company.
Kauai Fruit & Land Co., Ltd.
Honolulu Ranch.

Keep your
SAVINGS
in a safe place. We pay 4% interest
BISHOP & COMPANY

Insurance

B. F. DILLINGHAM CO., LTD.
PHONE 4915
Fire, Life, Accident, Compensation
SURETY BONDS

Gold, Silver, Copper, California, Nevada, Arizona

The mining industry of these states is working on a larger scale than ever before. Production profits and dividends have shown remarkable growth. Opportunities are constantly being offered investors by the mines of these great states. It advises the readers of the exceptional money-making opportunities in the mining, oil and industrial field. It also furnishes, without cost to subscribers, unbiased information regarding any investment in which they are interested. Subscription \$1.00 per year. A three month trial subscription will be sent free on request. Send for it today.

Western Mining and Financial Review
525 Market St. San Francisco

Money to Loan

HOME INSURANCE COMPANY OF HAWAII, LIMITED
816 Fort Street Telephone 3529

J. F. MORGAN CO., LTD.
STOCK BROKERS
Information Furnished and Loans Made
Merchant Street—Star Building
Phone 1572

FOR RENT

Electricity, gas, screens in all houses
Neat two-bedroom house in town, \$22
Pine new 3-bedroom house, \$30.
Neat furnished cottage for two, \$18.
For loan on mortgage, \$10,000.

J. H. SCHNACK
824 Kaohumanu St. Tel. 6247 or 3438