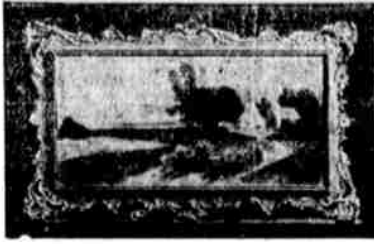


A PICTURE SALE

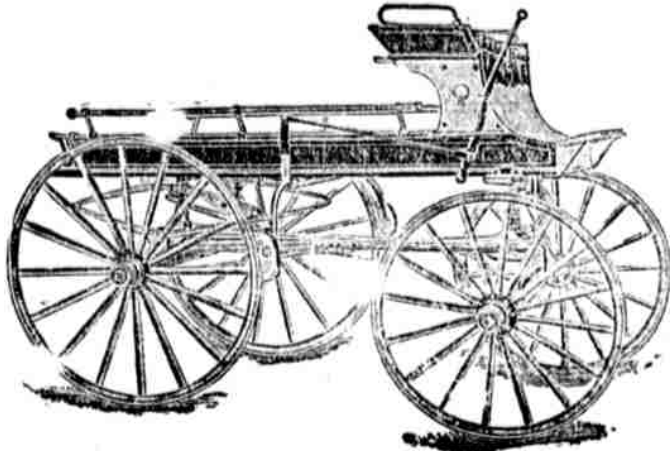


A Reduction of 25 per cent

See Our Window Display.

WALL, NICHOLS CO., Ltd.

SPRING WAGONS OF ALL DESCRIPTIONS.



OVER 15 DIFFERENT STYLES AND SIZES NOW ON HAND.

G. SCHUMAN, Ltd

EAGLE FROZEN OYSTERS and EASTERN OYSTERS

You can always get large, fat oysters at our counter for that loaf or stew or oyster fry. Some people have oysters often, others have them on special occasions only—ours are a treat for anyone. Delivered anywhere in the city. When you buy butter, if you buy the best it will be

Crystal Spring Butter

METROPOLITAN MEAT CO., Limited Telephone Main 45.



Hawaiian Iron Fence and Monumental Co. H. E. HENDRICK, Prop. TELEPHONE MAIN 287. 176-180 KING STREET.

Wailuku, Maui, May 1, 1902. Dear Sir: In my innocence I purchased in Honolulu a jar of your

Pin-money Pickles

It brought me great trouble, and one of three things must occur: 1. You must stop making them; or 2. I must get them at less expense; or

3. I am a ruined man. Since my first venture I've had many "jars." My family from early morn cry "Pickles"; neighbors ring the door bell and shout "Pickles"; relatives visit me in expectation of "Pickles". Your pickles are my Nemesis. Please, dear sir, quote them by the keg, barrel, hoghead, ton or shipload, and "preserve" me. Yours very truly, CARROLL WHITTAKER.

P. S.—I want Gherkins, Cauliflower, Onion, Marynia, Mixed, Peaches and Mango. C. W.

LEWIS & CO. LIMITED. 1060 FORT STREET. 240—TWO TELEPHONES—240 General bookbinding, ruling, gliding, embossing, maps, charts and artistic printing at the EVENING BULLETIN Job Office.

YOUR WIFE

that is, or the one to be, will appreciate the freshness, purity and flavor of our

FRESH CANDIES

We have built up a large rate of these candies in a very short time and it is the superiority of the sweets that has done it. Order either at the store or by telephone; you will get the best either way.

H. MAY & CO. LIMITED. The Popular Grocery. 22—TELEPHONES—24

Kamehamehas Beat Artillery AT BASEBALL Honolulu Win From Mailes

The first game of the afternoon was called a little after 1:30 o'clock, the Mailes going first to the bat. The teams batted in the following order: Maile-Hima—Kalawana, rf; Davis, lb; Jones, ss; Kiley, c; Luahiwa, lf; Akau, 3b; Clark, p; Mana, 2b; and Taylor, 1b.

H. A. C.—Pryce, ss; Aylett, cf; Williams, p; Louis, rf; Joy, 3b; Cunha, c; Hansman, lf; Thompson, 2b; and Gleason, 1b.

First—Mailes Missed Chance. Kalawana went to the bat first for the Mailes and sent a ball to Joy at third for an error, making his first base. Davis made a hit past second for a base. Jones hit to pitcher, who threw to third, catching Kalawana. Davis and Jones were advanced to first and second, respectively, on a passed ball. Kiley flew out to right. Davis had all the time in the world to get home, but he froze to his third with neither rhyme nor reason. Luahiwa struck out. The Mailes had every chance to score but something happened.

Second—Mailes Hit Ball. In the second inning Akau went out first for the Mailes and sent a fly over second for one base. Clark got first on a slow hit to pitcher. Mana made a two-base hit into right and brought in Akau. Louis fumbled the ball and fell down, and then Clark came in. Mana going to third. Taylor hit past first, Thompson on second made a good stop and the runner was put out, but Mana came home. Kalawana went out, short to first. Davis (Taylor running) hit to short and beat the ball out to first. Jones went out, second to first.

Third—Mailes a Run Ahead. In the third inning Kiley made a two-bagger into left for the Mailes. Luahiwa flew out to right, Louis making a fine run three-quarters of the way to second to field the ball. Akau went out, third to first, on a sacrifice. Clark fanned out. Kiley was left on third. Aylett for the Honolulu flew out to right. Williams flew out to center. Louis made a base hit close to second. Joy went out, third to first.

Fourth—Pair of Circlets. Mana was first man for the Mailes in the fourth. He went out, pitcher to first. Taylor went out, second to first. Kalawana fanned out. Cunha for the Honolulu made a two-base hit into right. Hansman went out, third to first; Davis catching the ball in one hand. Thompson struck out. Gleason did the same.

Fifth—Score Tied. Fifth inning, with Davis at the bat for the Mailes. Flew out to right. Jones hit in the direction of first. Gleason went out to get the ball and Williams ran from his box to first and got there in time to catch his man. Kiley flew out to Thompson at second. Pryce for the Honolulu flew out to left. Aylett made a two-bagger into right. Had the ball not hit one of the palm trees, it would have been a three-bagger. Aylett got third on a passed ball. Williams made a three-bagger into right, bringing Aylett in and making the score a tie. Louis flew out to right and then Williams, making a beautiful run, came home. Joy got his base on balls. Cunha struck out.

Sixth—Joy Into Box. Luahiwa for the Mailes in the sixth. Joy in the box for the Honolulu. Luahiwa struck out. Akau made a base hit over second. Clark was at the bat. Suddenly Cunha sent the ball to first and Akau was caught off the base. Clark struck out. It looked very much like a different story with Joy in the box again. Hansman for the Honolulu went out, short to first. Thompson made a clean base hit over third. Gleason sent another single between third and short. Pryce hit to short, who threw to third, catching Thompson. Aylett flew out to first.

Seventh—Joy Sheds Sweater. In the seventh inning Joy took off his sweater and it was all off with the Mailes. Mana for the Mailes flew out to short. Williams, the previous pitcher, fielding the ball. Just here, Joy threw such a tremendous drop that it dug a great piece out of the ground and went past Cunha. Fortunately, there were no men on bases. Taylor and Kalawana both struck out. Williams for the Honolulu flew out to center. Louis got first on an error by short. Joy hit into center for a

base and got second on a bad error by second. Louis was advanced to third. Cunha made a base hit into center, bringing in Louis and Joy. The runner would not have got second had it not been that Taylor fumbled the ball. Thompson went out, third to first.

Eighth—Score Tied Again. In the eighth, Davis (Taylor running) for the Mailes made a hit past first. Jones struck out. Kiley made a single between first and second. Luahiwa made a base hit into left and Davis came home. Akau struck out. Clark made a single past short and Kiley and Luahiwa came home. Mana flew out to Hansman in left. The excitement at this stage of the game was tremendous. The Maile aggregation simply went wild at the outlook. Gleason for the Honolulu got first on another error by Jones at short. Gleason was caught stealing second. Pryce went out to first. Aylett hit an easy high fly into right, which was by every right the property of the fielder there. However, Mana of second wanted to make a grandstand play and went after the ball, miffing it as was to be expected. As a consequence, Aylett got two bases. Williams went out on a slow grounder to first.

Ninth—Great Excitement. Taylor started off the ninth inning for the Mailes and plunked a ball right into Thompson's fingers for an out. Kalawana made first on an error by short. The great Davis fanned out and waddled back to his bench, while Jones went out, third to first. Louis for the Honolulu went out, second to first. Same story for Joy. Cunha flew out to center and another inning was necessary.

Tenth—Band Began to Play. In the tenth the band started up and Kiley for the Mailes flew out to Gleason at first. Luahiwa went out, third to first. Akau got first on an error by short. Clark flew out to Thompson at second. Hansman got first on an error by Mana at second. This was not a very bad error, the ball bouncing awkwardly. Thompson hit safe into left for one base. Gleason hit to short and the ball was thrown to third, catching Hansman. Pryce struck out. Aylett on a pop-up right into Davis's hands. The Honolulu seemed to have lost the chance of their lives.

Eleventh—Williams Wins Game. In the eleventh, Mana for the Mailes struck out. Taylor flew out to Thompson at second. Kalawana struck out. Williams for the Honolulu hit far out into right through the palm trees. The fielder there was confused by the trees and Williams went around to the third base. Louis hit in the direction of first, Davis fell in trying to get the ball and the runner got first safe, while Williams came in with the winning run.

After this most exciting game there was an intermission of about ten minutes, during which the two teams that were to play the second game got a little practice. The batting order in this contest was as follows, the Kamehamehas winning by the very narrow margin of 2 to 0.

Artillery—Smith, 2b; High, rf; Pliney, cf; Stone, 1b; Bennett, 3b; Manis, lf; DeLisle, ss; Davis, c; and Brown, p.

Kamehameha—J. Kekuewa, 1b; Jones, s; Kahaulelio, rf; Richards, 3b; Koki, 2b; Lemon, p; D. Kekuewa, c; Reuter, cf; and Cockett, lf.

Second—Kams Score. In the second, Richards for the Kams got his base on balls. Koki hit one right up into the air. Catcher muffed it and pitcher, picking it up, threw to second, putting Richards out. Lemon went out, second to first. Kekuewa made a single past second, but was caught at second. Heff however, brought Koki in.

Advertisement for Alden Electric 'Belt' pens, priced at \$20.00 and \$5.00. The ad describes the belt as a 'strong current of electricity' that is 'easily regulated' and 'bound to supersede all other pens'.

and the rooster got two bases. Bennett went out, pitcher to first, sacrificing and advancing Stone to third. Manis flew to third. DeLisle struck out left. Rooter Stone marched in from third with a tired look on his face.

Third—Neither Side Scores. In the third, Reuter, a new player for the Kams, went out, second to first, and Cockett flew out to right (High). J. Kekuewa flew out to second.

Fourth—More Goose Eggs. Jones for the Kams in the fourth, went out, short to first. Kahaulelio and Richards both struck out. Pliney for the Soldiers got base on balls. Stone struck out and went back to tell his friends what the matter was. Bennett struck out and Pliney really stole second. Manis struck out.

Fifth—Lemon Gets to Work. In the fifth, Koki for the Kams hit a slow ball toward first. The pitcher got the ball, threw it easily to the rooster at first, but the latter let it go through his legs. Lemon flew out to left. D. Kekuewa knocked a ball right through short and out into left for three bags, bringing Koki home. Reuter hit to second, the ball was thrown to catcher and D. Kekuewa was caught between that player and third. Reuter was advanced to second. Cockett flew out to center.

Sixth—An Island Record. In the sixth J. Kekuewa went out, second to first. Jones flew out to second. Kahaulelio did the same as Jones. Smith for Soldiers struck out. This was the seventh successive strike-out by Lemon, which is the island record. High made a single into left. Pliney hit to third and the ball was thrown to second, catching High. Pliney was caught stealing second.

Seventh—Very Short Work. In the seventh Richards for the Kams went out, short to first. Koki went out, pitcher to first. Lemon flew out to second. Stone for the Soldiers struck out again. Bennett flew out to right. Manis struck out.

Eighth—Splendid Chance Gone. D. Kekuewa for the Kams struck out. Reuter flew out to first. Cockett went out, pitcher to first. DeLisle flew out to second. Davis made first on an error by Richards at third, but was caught off first on a swift throw by pitcher. Brown hit a slow one toward first and beat the ball out. Smith got base on balls. High struck out and the Artillerymen lost the chance of their lives.

Ninth—Kams Win. J. Kekuewa for the Kams got first on an error by first and second on still another hit but was caught stealing toward third. Jones went out, pitcher to first. Kahaulelio got base on balls and stole second. Richards made a base hit in the direction of second. While Koki was at the bat, Brown hurried suddenly and threw the ball to second, catching Richards. This retired the side.

By way of cheering up the Soldiers, the band played "Three Cheers for the Red, White and Blue," and Pliney went to bat, making a strike-out. Stone made a base hit past second. Bennett got base on balls. Manis struck out. Tobin, a new man, was put into the latter's box in place of DeLisle, known to be a poor batter. It was thought that this new player would bring in at least one man. However, such was not the case. Bennett got caught at second and the game was over.

Following is the present standing of the clubs:

Table showing the present standing of the clubs. Columns include Club Name, Wins, Losses, and Total. Clubs listed include Honolulu, Punahou, Maile-Hima, Kamehameha, Custom House, Artillery, and Honolulu Athletic Club.

Maile-Hima Athletic Club. A.R.H.O.A.E. Kalawana, rf. 6 0 0 1 0 0 0. Davis, lb. 5 1 2 13 1 0. Jones, ss. 5 0 0 6 3 3. Kiley, c. 5 1 2 5 1 0. Luahiwa, lf. 5 1 1 1 0 0. Akau, 3b. 5 1 2 3 4 0. Clark, p. 5 1 0 0 0 0. Mana, 2b. 5 1 1 2 5 3. Taylor, cf. 5 0 0 4 0 1. Total. 6 10 30 14 7.

Score by Innings. M.I.A.C. 0 3 0 0 0 0 3 0 0 0-6. A. A. C. 0 2 0 0 2 0 2 0 0 1-7. Three base hits—Mana, Williams 2. Two base hits—Kiley, Aylett, Cunha.

Artillery. A.R.H.O.A.E. Smith, 2b. 2 0 0 8 4 0. High, rf. 4 0 1 1 0 0. Pliney, cf. 3 0 0 1 0 0. Stone, 1b. 4 0 1 11 0 2. Bennett, 3b. 3 0 0 2 0 0. Manis, lf. 4 0 0 1 0 0. DeLisle, ss. 3 0 0 3 0 0. Tobin, p. 1 0 0 0 0 0. Davis, c. 2 0 1 5 2 0. Brown, p. 3 0 0 0 7 0. Total. 0 3 27 18 2.

Kamehamehas. A.R.H.O.A.E. J. Kekuewa, 1b. 4 0 0 4 0 1. Jones, ss. 4 0 0 0 0 0. Kahaulelio, rf. 3 0 0 1 0 0. Richards, 3b. 3 0 1 1 1 2. Koki, 2b. 3 2 0 5 0 0. Lemon, p. 3 0 0 1 2 0. D. Kekuewa, c. 3 0 2 14 3 0. Reuter, cf. 3 0 0 0 0 0. Cockett, lf. 3 0 0 1 0 0. Total. 2 3 27 6 3.

Score by Innings. Kamehameha. 0 1 0 0 1 0 0 0 0-2. Artillery. 0 0 0 0 0 0 0 0 0-0. Three base hits—D. Kekuewa. Sacrifice hits—Lemon, Bennett, Brown. Stolen bases—Kahaulelio, Richards.

Struck out—By Lemon 15, by Brown 4. Bases on balls—By Lemon 4, by Brown 2. Passed balls—Davis 1, Kekuewa 1.

MET HIS WIFE TO BE

When the steamship Mlowera arrived from Vancouver and Victoria last night and docked at the Pacific Mail wharf about 9 o'clock, a very impatient young man did his best to look patient and at ease on the wharf at the end of the gangway, while customs officers, immigration officers and doctors were discharging their various duties aboard.

William N. Patten, well known and popular in Honolulu, was the young man on the wharf. Miss Eleanor Phillips, who has lived in this city for about four years and who was formerly stenographer at the Custom House, was the young lady on the deck of the steamship. Miss Phillips was returning from a visit to friends up north.

When people from ashore were finally allowed to board the steamer, Mr. Patten lost no time in going aboard. They met. Soon a carriage was bearing the happy couple to the Catholic Cathedral and soon they were man and wife. Patten had prepared a home for his bride, having taken special pains to have everything in readiness. He had secured a cozy little cottage, furnished it and yesterday evening he decorated the interior with many beautiful flowers.

The wedding was a quiet affair, only a few intimate friends of the bride and groom being present. Mr. and Mrs. William N. Patten are now "at home."

PIPER MURRAY DEPARTS.

On Friday night the members of the Scottish Thistle Club presented "Piper" R. McDonald Murray with a badge in the shape of a Scotch thistle surrounded by a garter bearing the usual inscription. Piper Murray, who will leave these islands in the Alameda has been of great service to the club and will be greatly missed at all its functions at which his music and dancing have always been a most prominent feature. J. H. McGregor, another member of the club will leave in the same steamer.

The "Yukon" Refrigerator. It is perfect—no other one to equal it. Has movable fins, airtight locks, metallic ice rack, and the larger ones are lined with enamel. Shelves are movable and the refrigerator is of the best kind—dried wood. Great variety of sizes and at prices from \$10.50 upward. Made in Grand Rapids, Mich. PRESERVES YOUR FOOD and Saves Ice. Sold on Installments.

COYNE FURNITURE CO., Limited. PROGRESS BLOCK.

New York Dental Parlors. The high class of work turned out at the New York Dental Parlors every day counts and more people are realizing that they can get better work and lower prices than anywhere else. Each department in charge of a specialist and our operators are graduate dentists of the best-recognized schools in the U. S. or the world. We have a larger staff than any other dental office in the city; we have the best plate workers, crown and bridge specialists, and in fact all branches of dentistry as practiced by us are strictly up to date. We can save you money on your dental work. We will tell you in advance exactly what your work will cost by a free examination.

Table listing dental services and prices: Full Plate of Teeth \$5.00, Gold Crowns 5.00, Bridge Work, per tooth 5.00, Gold Fillings 1.00, Silver Fillings .50.

NO PLATES REQUIRED. All our instruments are thoroughly sterilized before use. New York Dental Parlors, Room 4, Elite Building, Hotel Street. Ladies in Attendance. Hours, 8 a. m. to 6 p. m. Sundays, 9 a. m. to 12 m.

Albert Raas. FINANCIAL AGENT, STOCK AND BOND BROKER. MEMBER OF HONOLULU STOCK EXCHANGE. Orders for the purchase or sale of stocks and bonds carefully and promptly executed. Loans negotiated.

Still in the Field. E. C. ROWE has started in business again now at 550 KING STREET, TERRITORIAL BUILDING, where he is prepared to do PAINTING and PAPERHANGING in all its branches, and will be pleased to see all of his old patrons, as well as new ones. He has no connection with any other shop. 550 KING ST. P. O. BOX 293.

A. C. LOVEKIN, STOCK AND BOND BROKER, REAL ESTATE AND INSURANCE. 403 Judd Building.

Fred. L. Waldron. BROKER AND COMMISSION MERCHANT. P. O. Box 553; Tel. Blue 791; Room 8, Spreckels Building.

J. H. FISHER & Company. Stock and Bond Brokers. AGENTS FOR FIRE ASSOCIATION, of Philadelphia, WESTERN ASSURANCE CO., of Toronto. Offices—Stangenwald Bldg., Merchant Street. Tel. Main 352.

S. S. ALAMEDA, JUNE 10. Next express steamer to coast Wells, Fargo & Co. Express. TEL. MAIN 199. Masonic Temple, with American Messenger Service.