



## New Wash Fabrics Reduced

THE NEW WASHABLE BORDERED Batistes; yard wide; self-color borders and designs on white grounds; all colors; the newest thing; sold at 25c..... **19c**

WASHABLE DRESS CHAMBRAYS IN tan, brown, red, and medium blue; sold by all stores at 10c and 12c; for Monday, reduced to..... **5c**

FINE QUALITY SILK MERCERIZED Gingham; checks and stripes, on pink and blue grounds; very desirable; the prevailing price is 19c; now..... **19c**

FINE AND SHEER CHECKED NAIN-sooks, full 36 inches wide; the quality that is sold in all stores at 15c; for Monday, reduced to..... **7c**

# The Most Important Purchase of Women's Suits on Record!

The purchase last week of the stock of Baltimore's leading women's suit makers, Messrs. Blumenthal & Langfeld, was beyond question one of the season's most extraordinary trade movements, 2,000 elegant and stylish suits coming to us at a fraction of their worth. No wonder the women of Washington were here in such throngs and bought so eagerly. To-morrow the best part of the big purchase goes on sale, many of the suits in styles and fabrics not shown before. The offerings more than ever merit a prompt visit to-morrow, and wise buyers will be here early. Remember, too, that no money is needed—have it charged.

The purchase includes a large lot of extremely stylish and handsome Taffeta Silk Princess and Jumper Suits, in the very latest and smartest patterns; in striped and plain color taffeta silks; black, navy, and brown. Also Stylish Jumper Effect Suits, in fine panama, leather brown, dark brown, and Copenhagen; also suits in rajah silk, striped pongees, &c. All are \$20 suits. .... **\$12.98**

At \$25 you can choose from the finest suits in the big purchase, and worth \$38 and \$40; this lot of suits embraces the Extremely stylish Butterfly Suits, in the smart French etons, blazer and cutaway styles, hip-length coats, and longer box styles; single and double breasted; all the leading colors—mulberry, brown, tan, gray, navy, black; there are also included suits in fine white serge, herringbone; shadow-stripe, and novelty mixtures, hairline serges, &c. Regularly these suits sell at \$40. An unusual bargain in this big suit sale at..... **\$25.00**

LOT OF ABOUT 250 TAFFETA SILK UNDER-shirts; black, navy, brown, and two-tone shades; extra good quality silk; stylishly plain, ruffled and pleated, with extra dust ruffle; the value is positively \$5.00..... **\$5.00**

BEAUTIFUL NEW LACE WAISTS, IN ECRU and white; over China silk foundation; the latest and most stylish waists of the season; all worth \$8.50. Reduced to..... **\$4.98**

Over 500 Very Stylish and Fine Quality Panama Suits, in all the latest spring models; these suits are man-tailored throughout; black; navy, and brown; double-breasted box coats and single-breasted cutaway effects; pleated skirts. Also suits in the stylish light mixtures and stripes; pleated and gored skirts, with wide bias fold. Every suit worth \$25. A remarkable sale offering at..... **\$15.00**

One of the best and most desirable lines in the big purchase is a lot of about 250 Beautiful Sample Suits in the immensely popular shadow stripe panamas and fancy serges; they are in black, navy, Copenhagen, russet, and brown; all the very latest and smartest styles, and, being samples, are but one and two of a kind. The regular price is \$35. We have never been able to offer a better bargain at..... **\$20.00**

FINE BLACK JAP. SILK TAILOR-MADE Waists; button front and back; long and short sleeves; latest styles; these waists sell at \$5 regularly..... **\$2.98**

BLACK VOILE SKIRTS; ELEGANT QUALITY and fine voile; trimmed with two folds of black taffeta silk; these skirts sell regularly at \$7; for Monday..... **\$5.00**

## The Silks and Suitings for the Easter Costume

Unless you wish to risk disappointment in having the suit finished by Easter, you would better select the goods at once and place it in the dressmaker's hands. Only two weeks until Easter. The following offerings will make you a prompt buyer—

Genuine Wash Habutai Silks, white; warranted all silk; beautiful, lustrous finish; 29 inches wide; never sold under 25c..... **15c**

Fine Silk Chiffons; full 27 inches wide; soft, light, and airy fabric; full line of colors—cream, white, and black; regularly 50c..... **29c**

The very stylish Sash-stripe Pongees, in natural, light blue, champagne, brown, tan, pink, Copenhagen, white, cream, black; every yard worth 69c. For Monday at..... **49c**

Fine quality Black Jap. Silk, 21 inches wide; beautiful, lustrous finish; all silk; sold at 39c. For Monday at..... **29c**

Navy Blue and Black Panamas, warranted all wool; 50 inches wide; reversible; the most desirable fabric; sells at \$1..... **69c**

The always-wanted Black Guaranteed Taffeta Silk, warranted all silk—

19-inch wide, worth 50c..... **29c**

27-inch wide, worth 50c..... **50c**

26-inch wide (imported), worth \$1.49..... **89c**

26-inch wide, worth \$1.19..... **79c**

Fine quality 36-inch Jap Silks (three-quarters silk, one-quarter cotton); in champagne, light blue, pink, national, gray, golden, pearl gray, tan, castor, Copenhagen, leather brown, cream, corn, and Nile. Special at..... **39c**

The very popular Rough-Finish Silk Pongees, in pink, light blue, medium brown, Copenhagen blue, new brown, and natural; 24 inches wide; have never sold under 75c; yard. For Monday, a big bargain at..... **49c**

The latest Checked Suitings; all the new spring effects; many patterns; the selling price is 89c. For Monday at..... **49c**

Priestley's Famous All-wool Black Dress Voiles; 42 inches wide; crisp, fine mesh; famous for quality and wear; everywhere \$1.19..... **79c**

New Spring Dress Goods, including all-wool Panamas, invisible stripe Panamas, colored batistes, all-wool chevrons, all-wool serges, all-wool striped suitings, checked suitings—36 and 35 inches wide; sell at 69c..... **45c**

Imported Plain-color Voiles; fine, crisp mesh; 42 inches wide; all spring shades and black; the value is positively \$1.25..... **89c**

The latest Spring Suitings, 40, 44, and 46 inches wide, embracing tan and gray stripe serges, invisible plaid batiste, pink stripe, invisible effect Panamas, navy blue and black striped mohair, plaid mohairs, mannish stripe fabrics; all worth \$1 and \$1.25..... **89c**

## Pianos Given Away!

### The Most Astounding Offer Ever Made—Ask For One.

We have taken in exchange during the past six months 18 square pianos, all well-known makes. These pianos we will place in as many Washington homes, free of all cost, for six months, the only condition we impose being that they shall not be disposed of. They are all in good condition, and will prove most useful for practice purposes and lessons. Applications for these pianos will be received only by mail, the coupon below to be used. The first eighteen received will be sent the pianos. Mail your coupon NOW, addressing Dept. H.

Hecht & Company,

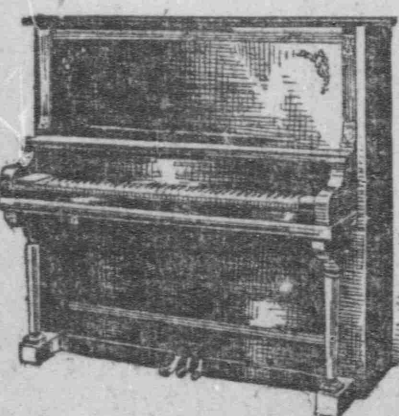
513-515-517 7th street:

Gentlemen: I hereby apply for one of the pianos advertised, to be sent free. I agree to the conditions under which it is sent.

Name.....

Address.....

## When You Buy a Piano at the Hecht Stores



You can always be sure that it will meet your ideas of what a piano should be, because before you decide the question

We send the piano to your home on free trial at our own expense.

If you decide to buy there will be no cash payment whatever required.

You pay us \$198 for a piano that all exclusive piano stores ask \$300 for.

There are three good and sufficient reasons why you should come here if you have in mind buying a piano. No other piano store in Washington offers anything like such a chance for perfect satisfaction.

### Let Us Tell You More About It To-morrow!

Expert Piano Tuning, either square or upright, promptly attended to.....

**\$1.25**

## Monday's Furniture Bargains.



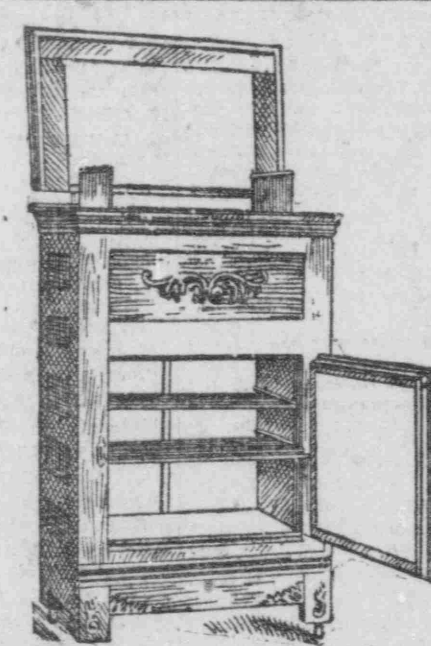
THIS EXACT 4-INCH-POST, ALL-BRASS BED; HANDSOME colonial pattern; seven heavy fillers; highly lacquered; regular price of bed alone, \$25. Outfit, complete, worth \$40; at these prices for Monday only—

Bed..... **\$12.98**

Elastic Felt Mattress..... **7.98**

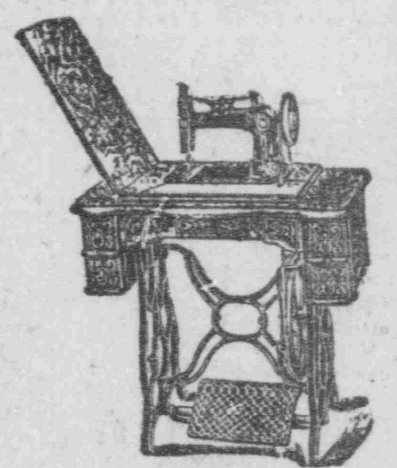
Genuine National Spring..... **3.98**

Outfit (not sold separately)..... **\$25.94**



LARGE FAMILY-SIZE HARDWOOD REFRIGERATOR; golden oak finish; galvanized metal lining; all bronze trimmings; 42 pounds ice capacity. **\$8.95**

Same make, smaller size, \$7.48.



SEWING MACHINES ON YOUR OWN terms. Ten days' free trial. No cash payment if you decide to buy. Terms to suit.

Lakewood Machines..... **\$24.75**

Waltham Machines..... **\$29.75**

Goodrich Machines..... **\$32.75**



Handsome Full Roll Reed Go-carts, with rubber tire wheels; metal pushers; brand new pattern; value, \$12.50; special price to-morrow..... **\$8.69**

Parasol and rod free with all carts over \$4.50.

## Matting, Rugs, &c.

CARPET HASSOCKS, IN A large variety of kinds; made of fine-grade carpets; sold at 8c usually; not delivered; no phone orders filled..... **20c**

CHINA MATTINGS IN CLOSE and broad weave effects; new and pretty patterns; 15c special price, not laid..... **15c**

SUPERIOR QUALITY CHINA Matting; 40 yards to the roll; 10 rolls in all; the roll, \$7.95; special price, per roll..... **\$7.95**

NO. 1 COCOA DOOR MATS; high brush face; very desirable quality; sold at 29c ways at 60c..... **29c**

FAMOUS DELTOX MATTINGS and Rugs—nothing better for spring and summer—

36-inch Rugs..... **\$1.19**

20-inch Rugs..... **8c**

27-inch Rugs..... **6c**

21-inch Rugs..... **3c**

18-inch Rugs..... **2c**

HEAVY CHINA MATTINGS, in effective check and block patterns; very durable; special, not laid..... **19c**

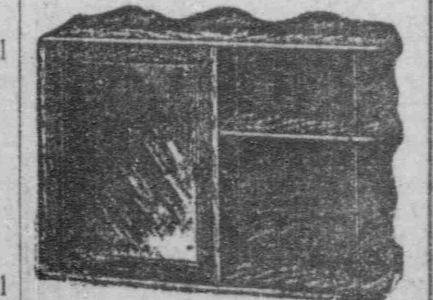
36x66 JAPANESE MATTING Rugs, with knotted fringe ends; assorted patterns; 47c special price, each..... **47c**

Grained-wood Ice Chests; all charcoal sheathing; special price now..... **\$3.69**

Drip Pan free with all Chests and Refrigerators.



STRONG BAMBOO TABOURETTE, with fine matting; covered top; has never sold under \$1; for Monday, reduced to..... **59c**



THIS WELL-MADE GOLDEN Oak Medicine Cabinet; mirror door and outside shelf; special price to-morrow..... **69c**