

COLUMBIA HEIGHTS

5 Sold; Only 3 Left.

Just Being Completed.

NORTHEAST CORNER OF PARK ROAD AND THIRTEENTH STREET.

These houses have very attractive fronts of selected English brick, with unusually wide colonial porches.

DESCRIPTION: Six rooms and attic; full tiled bath; hardwood finish on first floor, ivory white and mahogany on second floor; combination gas and electric fixtures; hot-water heat; servants' toilet; laundry trays; double inlaid oak floor; handsome mantels and decoration; gas logs; two-story porches in rear.

PRICES: \$5,500 for 13th Street Houses.
\$5,750 for Park Road Houses.

TERMS—Only \$500 Cash and \$25 Per Month.

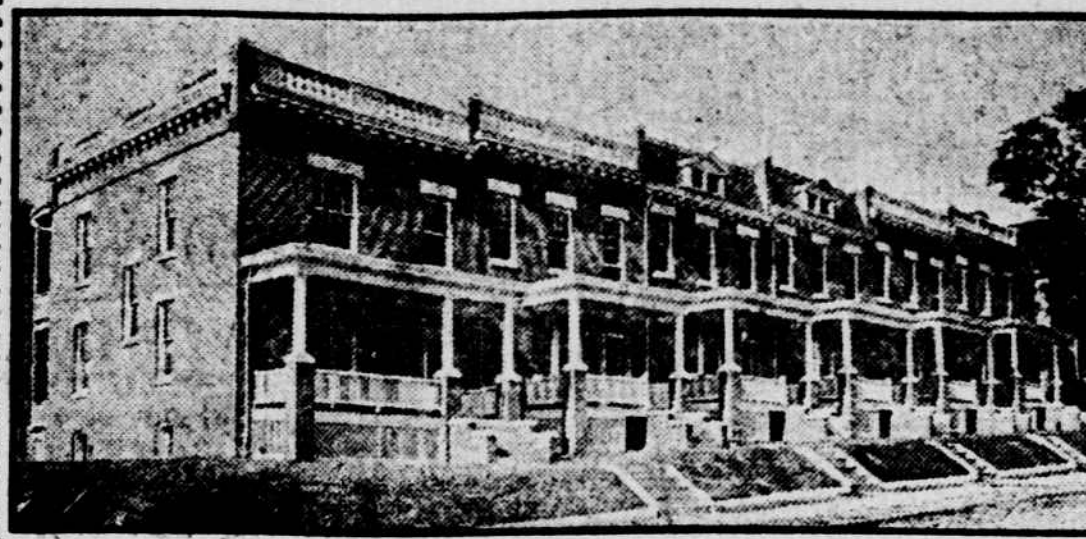
This is the most attractive home proposition of the season.

Don't Fail to Inspect Them.

Our representative on the premises.

Sample House, 1221 Park Road N.W.

WILLIGE, GIBBS & DANIEL,
Exclusive Agents,
603-605 Thirteenth Street N.W.



Don't fail to see these beautiful houses after you have seen all the others.

Positively the best yet built for the price.

\$4,300 and \$4,550. Corner Sold.

Twenty-one feet eight inches wide. Every modern convenience. Hot-water heat. Electric and Gas Lights. Front and rear porches. Parquet Floors. Superb view overlooking Washington College Park.

1902, 1904, 1906, 1908, 1910 2d St. N.E.

Inquire of **JOHN H. LANE, Builder,**
1725 3d Street N.E.,
or **GEORGE TRUESDELL,**
1627 Lincoln Road N.E.

Only New Homes
on Connecticut Ave.
for \$15,000

Can You Afford to
Miss This Opportunity

Connecticut Avenue Homes

Nos. 2814, 2818, Open Today

Inspection Invited

The Essence of Elegance and Refinement.

Exclusive Agents,

Harry V. Bouie & Co.,
Southern Building, Phone Main 1615

Built Especially for You

Open for Inspection.

An Ideal Home
An Ideal Location

1336 to 1340 Harvard Street,
Columbia Heights.

1 SOLD.

DESCRIPTION:

Lots 18x142 to 16-foot paved alley; handsome fronts of Roman brick, with large bay windows; two-story porches in rear. First floor: Parlor, large reception hall, dining room, pantry and kitchen. Second floor: Three immense sleeping chambers, with unusually roomy closets and beautiful tiled bath; trimmed throughout in solid oak, with double floors of same material; combination gas and electric fixtures; gas logs; handsome decorations; hot-water heat; servants' toilet; laundry; automatic water heater.

Price, \$6,500.

Reasonable Cash Payment, Balance to Suit.
Sample House, 1340 Harvard St.

To inspect—Take 14th st. car to Harvard st., then walk one-half block east.

Willige, Gibbs & Daniel,
Exclusive Agents,
603-605 Thirteenth Street.

DOWNTOWN STREETS RESEMBLE CANYONS

Tendency Pronounced to Carry
Office Buildings to Great-
est Possible Height.

The canyonlike effects presented by the streets of large cities since the era of the skyscraper are now so familiar that they have ceased to attract attention. Until recently, however, Washington people have been obliged to go away from home to see the beetling walls which modern construction has made possible. But even though building construction has advanced rapidly in the downtown section of the capital, it is probable that Washington never will compete with the "Colorado canyons" which are to be found in cities where the height of buildings is not limited.

An approximation of the street effects referred to may be found in the block in G street between 10th and 11th streets northwest, where both sides are now solidly built with tall buildings, which for the most part represent the extreme height permitted by the regulations. There is no other block that is quite so uniform, although G street between 14th and 15th streets, is approaching that condition. But the greatest massing of tall buildings is at the intersection of H and 15th streets where the Southern office building recently was completed; the Woodward office building now is receiving the finishing touches and the Union Trust building, for several years the home of the Union Trust Company, occupy three of the four corners, with the Shoreham Hotel on the remaining corner.

But these great structures, thrusting their tall forms toward the sky even now, are not isolated and are likely to be even less so as other buildings on the same blocks are completed. The tendency toward increasing the floor space in the business section is strongly manifested in the construction work which is now going on. The Wilkins office building, midway in the block on H street between 15th street and Madison place, is to be as tall as the regulations permit. Around the corner in Vermont avenue it is proposed to place the new Arlington Hotel. At the northwest corner of I street and McPherson square on 15th street it is proposed to erect the home of the University Club, the working plans of which are now being prepared.

TO BUILD NEW HOUSE.

Mrs. Fanny Ricks Will Have Home at 19th and R Streets.

A residence is to be built for Mrs. Fanny Ricks at the southeast corner of 19th and R streets northwest. It will be a basement house with windows on balconies in the first story and with a frieze and cornice of carved stone. The arrangement of the second floor reverses the usual order, as the servants' rooms will be in the front of the house, while the apartments for the family will be in the rear, the object being to secure the best exposure for the rooms.

APARTMENTS, THE WINDSOR, 1425 T St. N.W.

Modern fireproof building, electric elevator with all-night service; splendid apartments, with large, bright rooms and generous closets.

The most moderate rentals of any fireproof apartment in the city.

Inspection and comparison invited. Can be seen day and evening.

Geo. Henderson,
AGENT,
Phone Main 1303. 1418 F st. n.w.

609 and 621 Irving St. N.W.

\$3,850

\$900 cash. Balance \$20 monthly. New six-room, colonial brick dwellings, hot-water heat, hardwood finish, concrete cellars, servant's closet, wash tray; large front and rear porches; beautiful lawn. Prettiest house for the money in Columbia Heights. Lot 20 feet front by 107 feet to a 20-foot alley.

Lacy & Belt, Owners,
401 G st. n.w., Phone M. 7072.

FOR SALE—

901 to 909 Allison St., Petworth.

Open daily until dark.

One-half square east of Georgia Ave. car line.

Large lot to alley. Pressed brick front; 6 large rooms; tiled bath; concrete cellar; heated by hot water. Finished in hardwood throughout. Edge-grain polished floors, large closets. Handsomely papered, oak mantels, gas logs, combination gas and electric fixtures. Two-story rear porch, 2 large dressers in kitchen. Laundry tubs, servant's toilet.

Act quickly if you want a nice home. Come out Sunday. Price, \$3,500 to \$4,200. Corner, \$4,800. Cash, \$500. Easy terms.

LACY & BELT, Owners and Builders,
401 G st. n.w., Phone 7072 Main.

FOR LEASE FOR TERM OF YEARS,

MODERN BUILDING,

with upper floors and newest equipment.

919 G Street N.W.

Good alley facilities in the rear.

BEST LOCATION.

WEAVER BROS.,

1416 F St. N.W.

The congregation of the Chesapeake City, Md., Presbyterian Church has extended a call to Rev. William Clevins to become pastor of the church.

Henry Knippenberg, a farmer, died Thursday night at his home on Iron mountain, about eight miles from Cumberland, Md. He was about sixty-five years old.

NEW HOMES IN THE SUBURBS.



THE BUILDING UP OF NORTHAMPTON STREET, CHEVY CHASE, D. C., ABOUT COMPLETED.

Look! Only \$4,975

When You Buy One of These Houses at \$4,975
You Get It at \$525 Under Value.

You get a well built house. You get location. You get easy terms.

1425-29 33d St. N.W.

Georgetown.

THE PREFERRED LOCATION IN THE WEST END.

Open Every Day and Night.

Six fine rooms and LARGE RECEPTION HALL. Pantry. Tiled bath. Concrete cellar. HARDWOOD TRIM THROUGHOUT. BEAUTIFUL OAK FLOORS. Electric and gas light. Hot-water heat. Instantaneous heater. Laundry trays. Costly buffet-dresser in dining room. You don't have to buy a sideboard or buffet—it has four drawers, china closet, big plate glass mirror and shelves. WE SPECIALIZE THIS FEATURE, FOR NO OTHER HOUSES SHOW IT.

Beautiful papering imported silk parlor decorations. Gas logs. MAGNIFICENT OLD SHADE TREES ADORN EACH VERY LARGE YARD.

Ample room for stable, garage or garden. Public alley in rear.

CARS FIFTY FEET FROM THE DOOR.

Remarkably Easy Terms Can Be Made.

Small Cash Payment. Balance Like Rent.

Only \$16 Each Month

After You Have Paid Down to \$3,500.

Let Us Show You How Easy It Is To Pay Off \$1,475
And Own a House Like This For \$16 Monthly Thereafter.

HOUSES OPEN DAY AND NIGHT TILL 8 O'CLOCK.

Belt, O'Brien & Co., Inc. (Agent),

1309 G St. N.W.

ONLY 1 LEFT.
No. 1733 Lanier Place,
Washington Heights
at a
Surprisingly Low Figure
With Terms Just as
Easy as Rent

SPECIAL FEATURES.
These houses are artistically designed after the world-famed Spanish homes, with their handsome fronts of stucco, wide canopied porches, mansard roofs of red tile, with dormer windows.
First floor—Parlor, large reception hall, dining room, butler's pantry and kitchen.
Second floor—Four bed chambers, with immense closets in every room; beautiful bath, with tiled floor and walls; stationary washstand and medicine cabinet.
Electric lights, concrete cellars under entire house, handsome mantels and fixtures, automatic water heater, hot-water heat, servants' toilet.

Attic Over Entire House

The floors in every room, including halls, are of inlaid oak; two-story porches in rear, with a magnificent view of Rock Creek Park; deep lots, allowing generous back yards, with beautiful lawns.

Take Conn. ave. car to Ontario road, then walk one block north to Lanier place.

Willige, Gibbs & Daniel,
Exclusive Agents,
603-605 13th St. N.W.