

DEATH PACT BARED IN PALMER PROBE

Code Telegram and Letter
Indicating Agreement Found
in Miss Ritchie's Effects.

By the Associated Press.

LAGUNA BEACH, Calif., April 28.—Discovery among the personal effects of Adele Ritchie, erstwhile stage star, of a code telegram and a letter indicating the possible existence of a suicide pact with her friend, Doris Murray Palmer, wealthy divorcee, today formed the basis for a renewed investigation into the deaths of the two women.

Moresby White, attorney for Miss Ritchie, who was the divorced wife of Guy Bates Post, noted actor, said the letter, addressed to him, indicated that his client contemplated taking her own life and that she was to be joined in the death plan by Mrs. Palmer. Com-

plete contents of the letter were not revealed by White.

Jumble of Code.

The telegram, apparently a jumble of code words, has not been translated. Sheriff Sam Jernigan said the telegram blank also contained two telephone numbers, one in Los Angeles and the other in San Diego, written by Mrs. Post. He said the subscribers to these numbers would be questioned.

Friends of the two women admitted the possibility that a suicide agreement had been discussed by the two women, but discounted the theory that Thursday's double tragedy resulted from such a pact. They cited that Mrs. Palmer was shot first in the back, indicating that she was attempting to escape death. The verdict rendered by a coroner's jury was that Mrs. Post shot Mrs. Palmer in a jealous rage and later turned the gun on herself.

Many Letters Exchanged.

White said he had hundreds of letters and notes that had passed between the two women over a period of several months. The communications all were of a personal nature, he said, and revealed a strong bond of affection between the couple.

One letter written by Mrs. Palmer to Mrs. Post said, "I'm sorry you were so unhappy this visit. It makes me utterly miserable to have you so upset. But it is useless for me to try to convince you that I do not stray from the

arms you looked over a year ago. It would seem that every one but you knows that I live each day under your spell—striving to please you, thinking of you first in everything. "Better far for both of us if I could find an absorbing interest. My poor attempt at drawing may be the answer. Drowning might be better. With the love of Y. B. C."

The initialed signature, White said, means "your best girl."

FIRE DESTROYS SHIP

Freighter Burns to Water's Edge.
Crew Escapes Injury.

By the Associated Press.

JACKSONVILLE, Fla., April 28.—The freighter Nassauvian, bound for Sault Ste. Marie, Mich., from the local port, burned to the water's edge at the mouth of the St. John's River yesterday.

The crew of nine, including Capt. Willis M. Thompson, Jacksonville, escaped without injury. The motor-driven vessel, loaded with fuel oil, caught fire, officers said, from a short circuit in the generator and was a mass of flames within a few minutes. The tanks of oil exploded and efforts of the local fire boat to extinguish the flames were futile. The vessel was to have entered the lumber trade on the Great Lakes.

PLIGHTS TROTH TO DEAD HUSBAND'S BROTHER

Wife Announces Plans as Police
Question Her Concerning Su-
icide of Mate.

By the Associated Press.

EAST ORANGE, N. J., April 28.—Mrs. Florence Keller, 22, shortly after the suicide Saturday of her husband, Henry, 22, hugged the arm of the dead man's brother, Edward, 23, during their examination in police headquarters and said, "We will be married as soon as is decently possible."

Henry Keller, in a note penned as he inhaled gas, said he was ending his life because his wife was "unfaithful." Mrs. Keller and Edward said Henry had known of their love for months and that a divorce had been planned. The couple were questioned by police after Henry's body was found in his gas-filled room in a boarding house.

FREE BOOK TO HELP PLAN

YOUR CALIFORNIA TRIP
"Forty Ways and More to California." Write for this book today. It's free; up to date; helpful. Shows best routes from Chicago, maps, train schedules, fares, etc. C. N. Hale, General Agent, C. & N. W. Ry., 201 Franklin Trust Bldg., Philadelphia, Pa.—Advertisement.

10¢ new 15¢ lower prices

30¢ UNDERWOOD Deviled Ham

AMERICAN STORES CO.
AMERICAN

Hom-De-Lite Mayonnaise
Is Delicious

From the Very Beginning

—of our business life we adopted the invincible principle that Quality Counts! What a shopping convenience to the American housewife, the American mother who is blessed with her neighborhood ASCO Store. The World's Best in Foods and Table Needs at prices which mean consistent savings!

It Pays to Shop Where Quality Counts!

Reg. 15c ASCO Finest Golden Bantam
Sugar Corn
2 cans 25c
Finest Quality Grown

Sweet Tender Peas Stringless Beans Ripe Tomatoes } 3 Cans 25c

Reg. 8c ASCO Beans With Pork 3 cans 20c

ASCO Country Gentleman or Shoe Peg
Corn
2 cans 29c
The Very Best

Weekly Specials!
*Lord Baltimore pale dry, golden and sarsaparilla 14-oz. bot 5c
*Lord Baltimore regular, grape and orange 24-oz. 25c
*Gunther's Brew light and dark 4 bot. 25c
*Plus bottle deposit.

Choice Golden Bantam
Corn
can 10c

15, 25, 40, 50, 60 Watt Mazda Lamps ea. 20c
100-Watt Mazda Lamps..... 35c

Kellogg's Rice Krispies Pkg. 10c
Good for Any Meal!

Reg. 23c ASCO Pure Fruit
PRESERVES Jar 19c
Your Choice of Strawberry, Raspberry, Cherry, Peach or Pineapple

Freshly Baked
Cheerio Biscuits 2 lbs. 29c
An Unusually Low Price

Pale Dry **Ginger Ale** 3 Bots. 25c
Plus Bot. Deposit
*Hi-Ho Beverages 6 Bots. 25c
*Plus Bottle Deposit

*ASCO Golden **Ginger Ale** 3 Bots. 25c
Clicquot Club **Ginger Ale** Bot. 14c

Carefully Selected—Roasted in Our Own Roasteries
ASCO **COFFEE** lb. 29c
Victor Blend **Coffee** Lb. 25c
Acme Brand **Coffee** Lb. 35c

The Big, Big Nickel's Worth
BREAD
Big Pan Loaf 5c
Homemade **Milk Rolls** Doz. 10c

ASCO Plain Black 1/4 lb. 12c ORANGE 1/4 lb. 17c
TEAS or Mixed

ASCO **Ammonia**
Reg. 25c bot. 19c
Reg. 9c 2 bot. 15c

Advance Spring Cleaning Hints!
Quality Dust Brushes . ea. 40c, 50c
Handy Scrub Brushes . ea. 10c, 17c
Strongly Made Stove Brushes . ea. 20c
Finest Cotton Mops . . . ea. 29c
Mop Sticks (long and smooth) . ea. 15c
S. O. S. Aluminum Cleanser pkg. 12c

Reg. 53c Sturdy
Brooms ea. 43c
Reg. 39c Good Quality
Brooms ea. 33c

Kitchen Knives . ea. 10c Anchor Openers . ea. 4c
Handy Can Openers 8c

Babbitt's
CLEANSER
Can 5c
P&G Naphtha
SOAP
7 Cakes 25c
Lifebuoy Health
SOAP
3 Cakes 20c

Drano (cleans clogged pipes) can 22c
Regular 5c Dawn Cleanser 3 cans 10c
Chloride of Lime can 12c
Babbitt's Lye 2 cans 25c
Gold Dust Washing Powder, 6 pkgs. 25c
Mione Hand Soap 3 cans 25c
Rinso (soaks clothes clean) pkg. 9c, 23c
ASCO Washing Soda pkg. 8c
Palmolive Soap 2 cakes 15c

FRESH PRODUCE!

Fresh Pineapples . . 19c Each

Tender Crisp **Spinach 3 Lbs. 20c**

Green Spring **Kale 4 Lbs. 25c** Florida New **Potatoes 3 Lbs. 20c**

Shoulder Roast of Lamb Lb. 22c
Shoulder Lamb Chops Lb. 25c
Round Bone Shoulder Chops Lb. 28c
Lean Stewing Lamb 2 lbs. 25c
Lean Stewing Beef Lb. 15c
Fresh Ground Hamburger Lb. 32c

PORK CHOPS
Center Cuts . lb. 35c
Meaty End . lb. 25c
Nicely Trimmed

Luncheon Specials
Skinless Frankfurters lb. 38c
Luxury Loaf 1/4 lb. 13c
Luncheon Meat 1/4 lb. 13c
Large Bologna 1/4 lb. 10c
Straight Bologna 1/4 lb. 10c
Pimiento Bologna 1/4 lb. 10c

Dried Beef 1/4 lb. 20c
Longhorn Cheese lb. 29c
Swiss Type Cheese 1/4 lb. 13c

ASCO Service brings the very best foods and table needs from all parts of the globe, and hundreds of thousands appreciate what it means to always receive Highest Quality at Fair Prices.

These Prices Effective in Our Stores and Meat Markets in Washington and Vicinity

LANSBURGH & BRO

7th, 8th and E Sts.—FAMOUS FOR QUALITY SINCE 1860—National 9800

The New Silhouette Is Just Perfect

For Women Requir-
ing Sizes 36 to 42

Because It Bestows Youthfulness to Her—
Dramatizes Her Stateliness . . .

The flat, boyish look is out of the Fashion picture today, so make the most of your curves! The mature figure has come into its own, for 1930 frocks are built around the natural figure. Buy plenty of them, and look younger and more womanly than you've ever looked before!



Dress Details Include: jackets that enable you to wear tuck-ins and the raised belt, boleros that give that coveted straightline in the back, even hemlines that are inconspicuous, and longer skirts, undeniably slenderizing.

Coat Details Include: the long side rever (the 1930 surprise), dull fabrics, capes that balance any tendency to wide hips, sleek, flat furs that give a softness and richness but not a weighty look, and fitted lines that keep the waistline slim.

Apparel Shops—Second Floor

New Silhouette Frocks
\$16.50 \$25 \$39.50

New Silhouette Coats
\$25 \$35 \$49.75



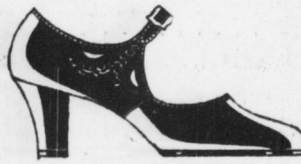
The coat with the fashionable one-sided rever gives the woman a long down-sweeping line. Size 38. \$49.75.



The pin dot jacket frock is especially smart and eminently flattering to the woman of larger proportions. Size 38. \$16.50.



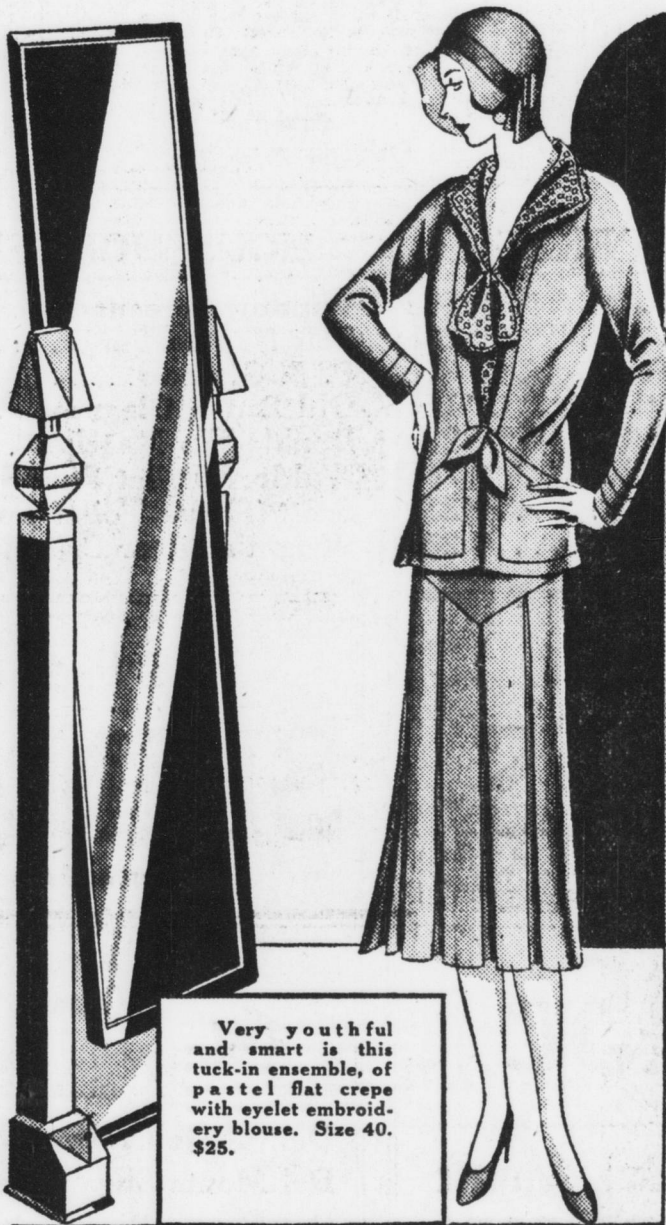
Printed chiffon frock, cleverly moulded to make the figure look smaller. With lace yoke and flared sleeves. Size 40. \$39.50.



An Interesting Foot Note

Flexridge shoes assure the active woman foot-smartness and foot-comfort. Built on a combination last and with the non-slip heel lining. \$10.

Shoe Shop—Second Floor



Very youthful and smart is this tuck-in ensemble, of pastel flat crepe with eyelet embroidery blouse. Size 40. \$25.

But First Purchase a 1930 Nemo-flex \$10

This corsetlette will give the womanly figure correct dimensions. Of brocade and swami with elastic insets cut on the bias to control the hipline and heavy boning over the abdomen and across the back.

Corset Shop—Third Floor



For the Final Touch

The linen-weave baku hat with a brim that is shorter in the front and back . . . a flattering frame for the fuller face.

\$10

Millinery—Second Floor

For Spring tailleur or the furless Coat. Pointed, natural red, dyed cross or Hudson Bay blue foxes.

\$39.75

Furs—Second Floor

