

HANOVER INN
Offers to Summer Guests
every modern facility for
comfort and convenience.
18 Hole Golf—25 Tennis
Cours—Saddle Horses
HANOVER, N.H.

**PAINTS
WALL PAPER**

**WALTER MORGAN
COMPANY, INC.**
421 10th St. N.W.
NA. 7888

**WANTED!
Gold, Silver and Platinum**

For over 50 years we have
been buying and paying
highest prices for Old Gold.
Licensed by U. S. Gov't.
Bring in your old gold,
watches and gold teeth.

SELINGER'S

Jewelers—Optometrists
818 F STREET N.W.
"Look for the Big Clock"

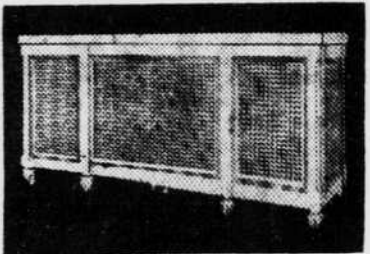
**\$1.00 ROUND
TRIP**

TO
Baltimore

Every Saturday and Sunday. Good
returning until last train Sunday
night.

W. B. & A. E. R. R.

Phone: National 1255
12th St. & New York Ave. N.W.



TRICO

Radiator Covers
PREVENT SMOODGE
PROVIDE PROPER HUMIDITY
BEAUTIFY HOME
Reasonable Prices. Convenient Terms
F. B. BLACKBURN
801 Chandler Bldg. 1427 Eye St.
National 5778

CAPUDINE

It's Already Dissolved
Gives quickest relief from pain. Banishes
nervous strain. Brings peaceful relaxation.
10c, 30c, 60c, pint alone and at Zeneca.
**All Ready to Relieve
HEADACHE**

EDUCATIONAL.

Why Not Learn Short-
hand and Typewriting?
Intensive Summer Course
June 25 to August 20
Speed Classes, Shorthand and Typewriting
—Day and Evening.

The Temple School

1420 K St. National 3258
Write or Call for Further Information

**JOBLESS GARDENS
TOUR IS PLANNED**

**N. E. A. Members Will Be
Shown Enterprise of
Local Relief Groups.**

Plans for a tour of the various sub-
sistence gardens by members of the
National Education Association will be
made this afternoon at a meeting in
Adams School. Detailed arrange-
ments for the tour, which is scheduled
for July 25, will be worked out by re-
presentatives of the organization and
members of the Advisory Committee
co-operating with the emergency re-
lief division in carrying on the gar-
dens project.

Meanwhile, members of the commit-
tee appointed to distribute the \$200 in
prizes offered by The Star for the best
gardens already have made their first
inspection of the half dozen tracts
under development.

Best Gardens Selected.

The first and second best gardens
on each tract have been designated
by signs painted by the vocational
class of Powell Junior High School.
Unless the gardens are kept in out-
standing condition, however, the signs
may be changed from month to
month, as the committee will make
additional tours on the 15th of July,
August and September.

First Prize Is \$15.

Members of the Judging Committee
are William R. Beattie, Agriculture
Department horticulturist; Thomas
Higgins and George Marvin.
Prizes of \$15 and \$10 for the first
and second best gardens on each of
the tracts will be awarded at the end
of the season, after the September in-
spection.

The Advisory Committee, headed by
Mrs. Frederick H. Brooke, prominent
society matron and social worker, is
composed of representatives of the
Emergency Relief Division, the Coun-
cil of Social Agencies and the Dis-
trict Work Planning Committee. R.
L. King of the Emergency Relief Di-
vision is active director of the project.

SILVER CARGO ARRIVES

Longshoremen's Strike, However,
Ties Up Landing.

VANCOUVER, British Columbia,
June 21 (AP).—Silver bullion valued at
\$126,000 at the current price in Can-
ada arrived here yesterday aboard the
liner Empress of Japan from the
Orient and may be "stranded" owing
to the longshoremen's strike in United
States Pacific coast ports.

The silver was to have been landed
at Victoria and forwarded from there
to Seattle by water. The strike pre-
cluded such an arrangement, how-
ever, and the shipment was brought
here.

French Trade Lags.

France's new economic measures so
far have not been reflected in im-
proved business conditions.

**INSTITUTE PLANS
TO BE LAUNCHED**

**Prof. Westerfield, Monetary
Policy Committee Head,
Arrives for Work.**

Prof. Ray B. Westerfield of Yale
University, president of the Econo-
mists' National Committee on Mon-
etary Policy, has come to Washington
to establish headquarters for an or-
ganization to be known as the Income
Extension Institute.

The institute, according to Prof.
Westerfield, is to be extended to a
Nation-wide basis for the purpose of
opposing the present trend of de-
pendence upon the Government for
charitable relief and security against
old age and the time of need, and to
restore a popular belief in thrift on
the part of the Nation and of the in-
dividual.

State Charity Inequitable.

The Yale economist declared that
"State charity is inequitable, every
industry and institution being morally
obligated not only to pay wages that
afford workers a decent living, but to
provide for old age security and the
other ills of life."

His plan to meet the problem is a
system of automatic saving and the
conversion of the savings into safe
annuities that will provide for re-
tirement at the age of 60 with an
adequate income for the average
person.

Number of Associations.

Associated with the professor here
will be Herbert N. Fell, veteran in-
surance man of New York, and a
number of persons interested in social
legislation and welfare.

The Economists' National Com-
mittee on Monetary Policy, which
was organized by Prof. Westerfield,
was active in a campaign to influence
Congress and the Roosevelt adminis-
tration to follow a conservative mon-
etary policy. "The new Income Ex-
tension Institute likewise will be a
propaganda organization.



**QUICKER
Surer
CHEAPER**

**Kills
ROACHES
ANTS
BEDBUGS
FLIES**

**19 BRITISH ROTARIANS
GUESTS OF CAPITAL CLUB**

Delegates to Detroit Convention
Attend Luncheon—John Poole
Made Honorary Member.

Nineteen British Rotarians, who will
attend the international convention of
their organization at Detroit, were
guests at the weekly luncheon meet-
ing yesterday of the Washington Rotary
Club. F. D. G. Osborne, charge
d'affaires of the British embassy, also
was an honor guest.

W. W. Everett, past president of
the club, spoke on "The Service
Problems of the Department Store,"
outlining the difficulties experienced
by department store buyers in keeping
up with styles.

John Poole, who was elected a
member of the Rotary Club 25 years
ago and who later became inter-
national president, was made an
honorary member of the club. He
was introduced by Col. LeRoy Herron.
About 200 out-of-town Rotarians
attended the meeting, which was held
in the Mayflower Hotel. Edwin Steffe
entertained with songs.

Freight Total Climbs.

Railway freight in Hungary is show-
ing a marked gain over last year.

**Special Train
Reduced Fare**

TO
**CHARLES TOWN
RACES**
June 16 to July 7

\$1.50
ROUND
TRIP

Fare Includes
Free Admission Ticket
Tax Extra

Lv. Washington—12:30 P.M.
Lv. Rockville—12:56 P.M.
Ar. Race Track—2:15 P.M.

Parlor Car—Dining Car—Coaches
Returning After Last Race

**B & O
Railroad**

**I am Using
SAPOLIN
SPEED VARNISH**



CLEAR & STAIN COLORS—4 Hr. DRY
SAPOLIN QUALITY PAINTS SINCE 1882

SOVIET CHANGES SANE

MOSCOW, June 21 (AP).—A further
step in simplification of the Soviet
governmental organization was taken
yesterday by an edict which abolished
the Revolutionary War Council, high-

est military and political organ of the
Red army, and the Collection of Peo-
ple's Commissariat of War and Navy.
Hereafter the commissariat will be
called the commissariat of defense.
Commissar Voroshilov will be assisted
in his executive work by only two
vice commissars.

The EAGLE FRUIT Stores
INC.

**Special Values for
Thursday, Friday and Saturday**

**Fine Fruits and
Select Vegetables**

Eagle Stores specialize in the finest fruits and
vegetables at money-saving prices. You'll always
find a larger and better selection at Eagle Stores.
Pay as a visit or phone your nearest store. Free
delivery to your home.

Big 17c Sale

Iceberg Lettuce 2 lbs. 17c
Fancy Ripe Tomatoes 2 lbs. 17c
Onions, White or Yellow 3 lbs. 17c
New Potatoes Extra Fancy 7 lbs. 17c
Fresh Calif. Apricots 1 lb. 17c
Peaches Extra Fancy 2 lbs. 17c
Stringless Beans 4 lbs. 17c
Fancy Lemons doz. 17c

Tree Ripened Sweet Cherries lb. 19c
Fancy, Juicy Plums 2 lbs. 19c
Fresh Green Lima Beans 3 lbs. 25c
Corn on Cob extra fancy 6 for 25c
California Sweet Oranges doz. 39c
Fancy Fresh Limes doz. 27c

Shop or Phone One of These Eagle Stores:

3545 Ga. Ave. Col. 10138 4807 Ga. Ave. Col. 10015 1019 H St. N.E. Lin. 9365
1301 Wk. Ave. We. 2171 2930 14th St. N.W. Col. 10404
"IF IT GROWS—WE HAVE IT."

**60c worth of fun for 5c
CHILDREN'S OUTING**
at MARSHALL HALL PARK
for children 6 to 16

Tuesday, June 26 . . . Wednesday, June 27 . . .
Thursday, June 28

*Boat ride to Marshall Hall Park
and return Value 25c
*Merry-go-round 5c
*Aeroplane Swing 10c
*Skooter 10c
*Honey-moon Trail 10c
Value 60c

A grand time for all—live rabbits given away
Just bring a nickel to our store on Friday, June 22,
or Saturday, June 23, and secure a ticket issued by
the Wilson Line and Marshall Hall Park from their
booth on the second floor.

Come early! Just 6,000 tickets

THE HECHT CO.

F Street at 7th



**JACK FROST
SUGAR**

for
Better
Preserving

BETTER results are more certain in canning,
preserving, making jams or jelly, if you use fine,
uniform cane sugar.

You can depend on the quality and uniformity of

**JACK FROST GRANULATED
SUGAR**

100% PURE CANE SUGAR

Packed in convenient 2 and 5
pound cartons, and in 5, 10 and
25 pound sanitary cotton bags.

Refined by
THE NATIONAL SUGAR REFINING CO. of N. J.

**Take your YEAST in
this delicious new
cereal form.**



MADE FROM WHOLE WHEAT

And now science has developed a new delicious way
of taking yeast. Yeasties is a whole wheat cereal . . .
every flake of which is scientifically treated with
pure, vitamin-rich, health building yeast. All the
goodness of whole wheat and all the health-giving
properties of yeast are there . . . in a form so good
your palate craves for more.

WITH ALL THE BRAN

All the bran normally present in the whole wheat is
retained in Yeasties . . . giving the necessary bulk
nature requires for normal, healthy elimination.
Yeasties is a perfectly balanced health-giving food.
The brewers yeast with which it is treated is the
richest source of vegetable proteins known to
science.

RICH YEAST IN EVERY FLAKE

Unlike ordinary yeast, brewers yeast has no un-
pleasant "yeasty" taste. Again unlike ordinary yeast,
brewers yeast does not ferment in the stomach and
therefore does not liberate gas to cause distress or
flatulence. It helps to purify the blood stream—
cleanse the system and aid in preventing consti-
pation.

BIG 10-oz. PACKAGE 17c

Start giving your family Yeasties tomorrow morn-
ing. Give them Yeasties regularly. It's a real aid
to new health, vigor, happiness.

For sale at all Sanitary, United
Food, District and other lead-
ing grocery stores.

Yeasties

Experienced Advertisers Prefer The Star

A CORNER IN MEN'S WEAR

**Sol Herzog
INC.
F St. at 9th**

It takes

QUALITY

to give

value in a

**LINEN
SUIT**

\$16.50

Sport Coats

Have your choice of the
new Bi-swing and Gable
Backs. Blues and browns.

\$15

Sport Trousers

Whites, stripes, shades . . .
cords and flannels to
"make up" with any sport
coat.

\$6.45

A linen suit has a lot in common with an
automobile. "It isn't the original cost, but
the upkeep that makes the difference."

That's why you will only find fine linens at
Sol Herzog, Inc. The kind that not only
look well, but are of the firmly woven,
smooth surfaced types that shed the dust
and hold the shape.

Bi-swings . . . single and double breasted.

**Sol Herzog
INC.**

F St. at 9th

INC.

**SPORT-O-GLAS
SUN GOGGLES**

Give full protection
against glare,
wind and dust.
Yellow gold-
filled, not plated.
**COMPLETE
WITH CASE 98c**
OTHER SUN GOGGLES FROM 25c

**SUN
REMEDIES
UNGUENTINE**

**42c
NOXZEMA
29c**

**BATHING
CAPS**

**LATEST
STYLES
NEWEST
COLORS
25c TO 49c**

OUTING JUGS

★ KEEP FOOD AND ★
LIQUIDS HOT OR COLD
GALLON JUG \$1.29
FOOD JUG \$1.98
SPIGOT JUG \$2.98

KEEP KOOL

GET YOURSELF AN
ELECTRIC FAN
PRICES FROM
\$1.49
TO
\$4.95
GUARANTEED

**BATHING
AND UTILITY
BAGS**

WATERPROOF
INSIDE AND OUTSIDE 98c

CAMERAS

FILMS

DEVELOPING
PRINTING

**COME TO Whelan's
for a delicious
★ FRESH FRUIT
ICE CREAM
SODA 15c**

Your favorite flavor . . . with two
full scoops of rich ice cream



**Whelan
Drug Stores**

9th & F Sts. N.W. 18th & Col. Rd. N.W. 17th & Pa. Ave. N.W.
13th & H Sts. N.W. 11th & Pa. Ave. N.W. 14th & H Sts. N.W.
14th & Pa. Ave. N.W. 12th & G Sts. N.W.

VACATION NEEDS