

Paris-to-Rotterdam Trip Approaches A 'War on Nerves'

Being Stranded Between
Red Tape of Two
Nations Is Prospect

By THOMAS R. HENRY,
Star Staff Correspondent.

THE HAGUE (By Mail).—The steel strings which bound Western Europe are cut in many pieces by the sharp ax of war.

This applies not only to the nations actually at war, but to the neighboring neutrals. It can be illustrated by a 14-hour journey between Paris and Rotterdam through Belgium—ordinarily covered in about eight hours by a fast express. Now only a few trains are running and these mostly slow locals.

Leaving the Gare du Nord, the train proceeds without incident to the French border town of Feignies. There it is held up for an hour or more while passports are examined, money counted to the centime, baggage searched methodically to see that no contraband is being taken out of France. Another 10 miles and the train is in the Belgian border town of Quevy. There follows another systematic examination of passports and baggage. They don't bother about money.

Soldiers at Work.

At both towns there is no leeway. Those without proper exit permits are removed from the train by the French soldiers, and left disconsolately on the platform to make the best of it. Those without proper Belgian visas are taken off by the Belgian soldiers. Both permits to enter Belgium and permits to leave France have been required only three weeks and many still are ignorant of them.

What happens to a person taken off the train at Quevy is a problem. Such an unfortunate has a permit to leave France, but not to enter it. He cannot go on. He is doomed, it would seem, to a long, disconsolate wait in the narrow strip between the two customs stations.

Then all is peace and quiet as far as the Gare du Midi in Brussels. There the train stops and it is necessary to transfer to the Gare du Nord across the city. It is quite a problem for Americans making their way to Holland with heavy baggage. Ordinarily Brussels taxi drivers will take French money. Now, realizing the fluctuations of exchange with the fortunes of war, they demand about triple their ordinary fares.

Many Examinations.

From the Gare du Nord one can get as far as Antwerp. There is a long wait for a train which will take one as far as the Belgian border town of Eschchen, where there is another examination of passports and baggage. Then still another train transports one a few miles to the Netherlands border town of Roosendaal, where passports and baggage again are examined systematically. They no longer are examined on the train. All must be taken into the customs sheds. From Roosendaal still another train goes as far as Delft. From there, if too much time hasn't been lost, the passenger can get still another train to Rotterdam.

But to the Americans, Dutch and Scandinavians on board, condemned for weeks to nights of total blackness, the brilliant lights of Rotterdam, with towering office buildings lit from roof to cellar and advertising signs flashing from every direction, are a most welcome sight.

Bayonets Fixed.

Through France and Belgium the trip has been past station platforms patrolled by soldiers with fixed bayonets. Drawn up on the French sidings are long lines of the familiar box cars of World War days with the words, "Hommes 40. Chevaux, en longue, 8."

New Peaks Reached In Air Transport

August brought another set of monthly all-time high figures for all phases of scheduled air transport operations, according to the monthly report made public last night by the Civil Aeronautics Authority.

Revenue passenger miles increased 47.53 per cent to a total of 46,171,246 miles, as compared with August, 1938, and 3.12 per cent as compared with July. The number of revenue passengers, revenue passenger miles, pounds of express and express-pound-miles all increased by from 30 to 50 per cent over August, 1938, and from 3 to 28 per cent over July.

Services provided to meet the increased business, as reflected in airplane miles flown and available passenger seat miles flown, were increased by 20 and 30 per cent, respectively. Passengers flown totaled 178,051 for the month, as compared with 122,735 in August of last year and 170,913 in July.

Little Sisters to Open Celebration Tomorrow

A pontifical mass, celebrated by the Most Rev. Amleto Giovanni Cicognani, apostolic delegate to the United States, will open tomorrow the three-day centennial celebration of the Little Sisters of the Poor.

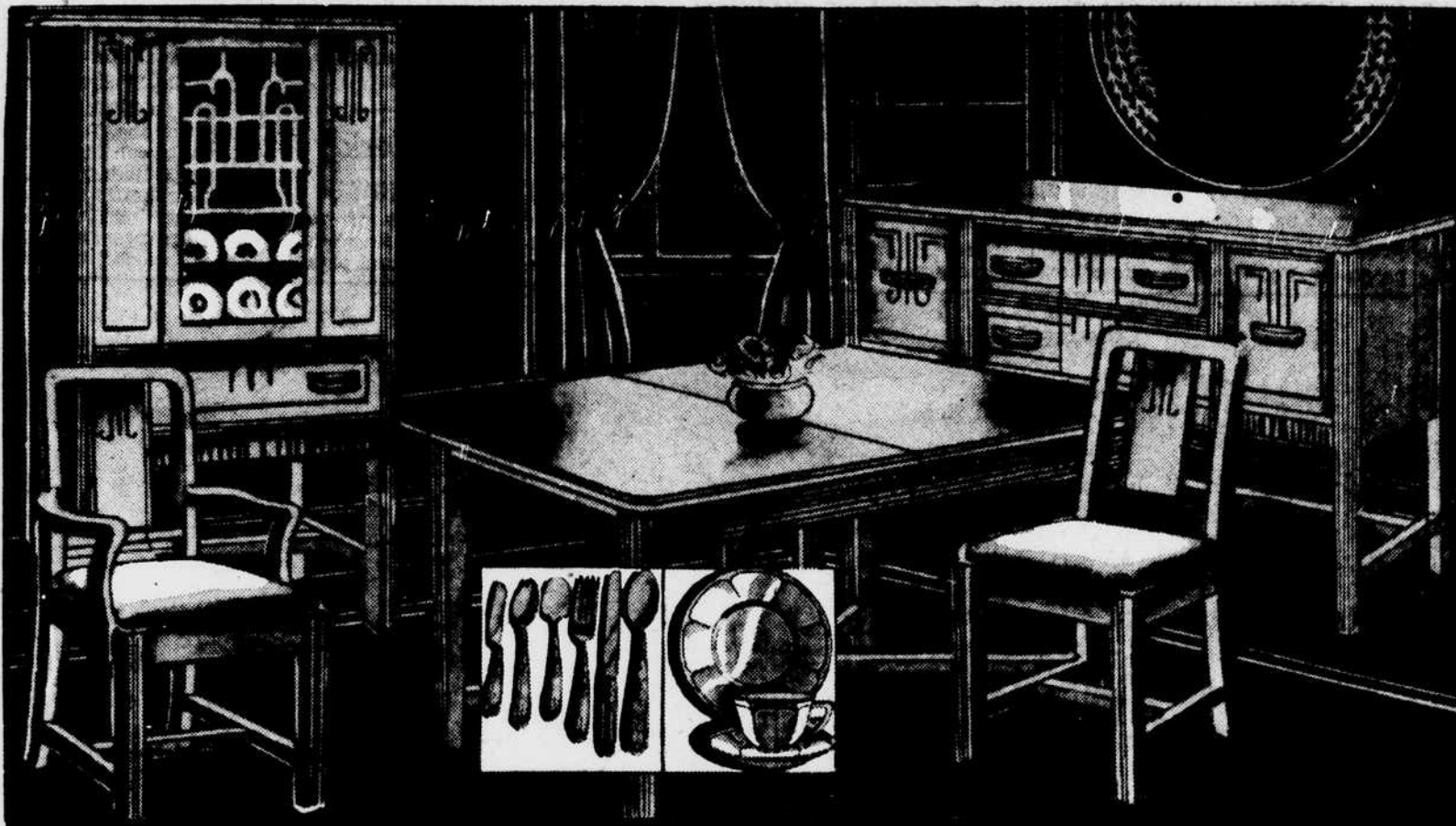
The Right Rev. Msgr. Joseph M. Corrigan, rector of Catholic University, will preach at the services, to be held at 10 a.m. in the Shrine of the Immaculate Conception. The Very Rev. Anthony Vieban, S. S., superior of Sulpician Seminary, will be assistant priest.

At 3 p.m. there will be a reception at the Home of the Little Sisters, 220 H street N.E., when the Rev. John K. Cartwright will speak.

Club to Start Library For Men at Mission

The Washington Soroptimist Club will start a library for men at the Central Union Mission, 613 C street N.W., by making an initial gift of some 200 books at Thanksgiving. Miss Estelle Zirkin, chairman of the Civic Committee of the club, is in charge of arrangements for the presentation.

The Soroptimist Club each year for the last six years has started a library for some group, organization or institution. Mrs. Jean Bennett, superintendent of the mission, is president of the Soroptimist Club.

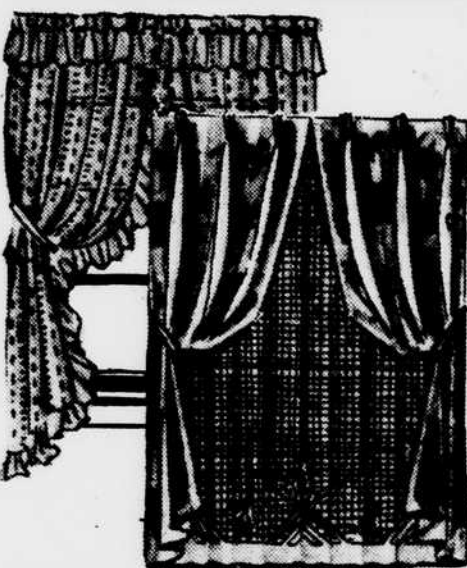


68-Piece Modern Dining Room Ensemble

Executed in precisely the latest trend to make the dining room more graceful and livable! Includes a walnut finish on gumwood dining room suite of modern lines comprising buffet, china cabinet, extension table and six upholstered seat chairs. A mirror, 32-pc. dinner set and 26-pc. silverware service also included!

\$79

No Money Down! Easy Credit Terms!



Tailored—Priscilla and Cottage Curtains

89¢ Pr.

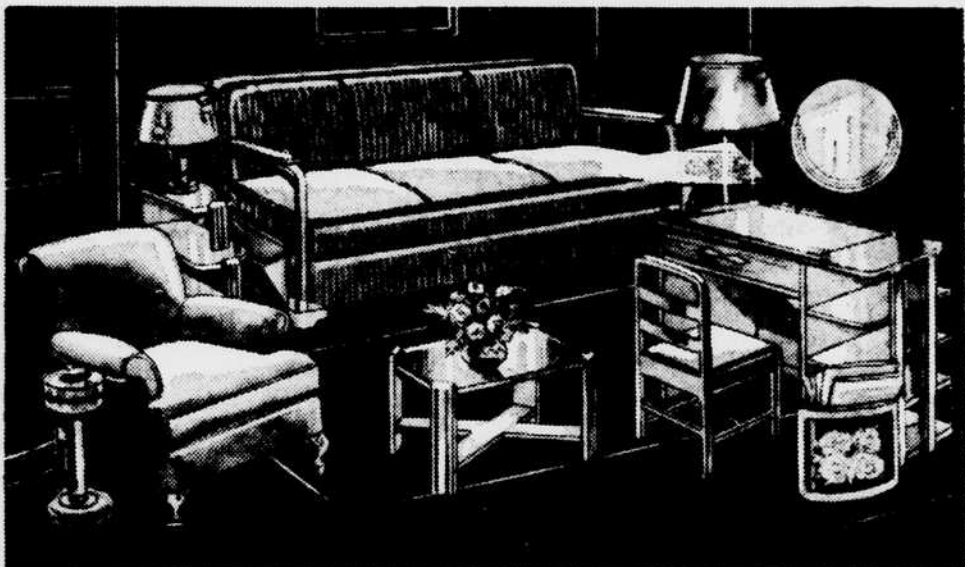
New fall patterns and colors. Excellent values at this price!

Cotton and Rayon Draperies

Pinch pleated tops. Fully lined and complete with tie backs. New colors. **\$1.69 PR.**

Net Panels

Several different designs in new or natural. Each panel 40 inches wide. **89¢ EA.**

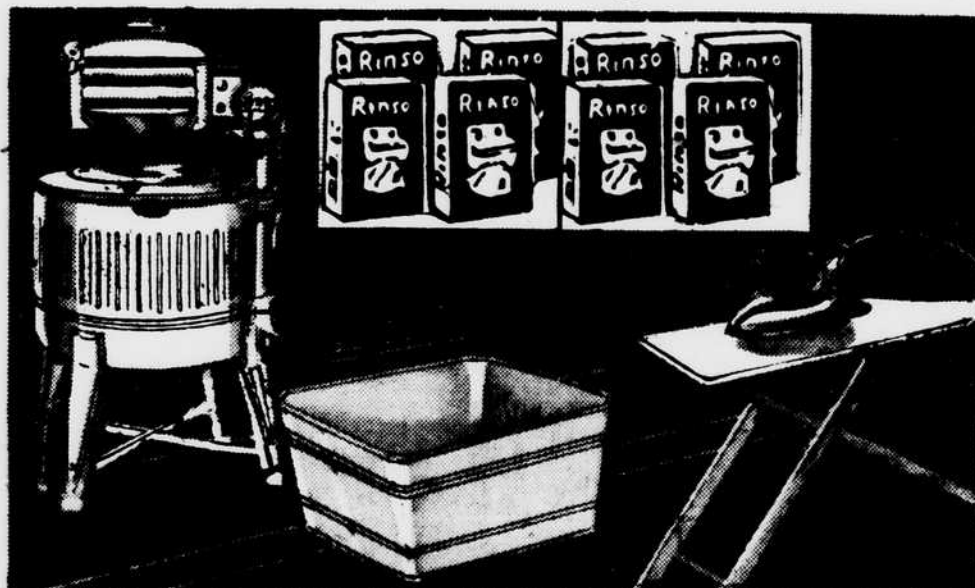


10-Pc. Simmons Sofa-Bed Outfit

As illustrated, tapestry-covered SIMMONS sofa-bed with magazine pockets on sides, opens to large double bed with two innerspring mattresses; kneehole desk and chair, coffee and end table and table lamp, lounge chair, metal smoker, and mirror. Compare!

\$66

No Money Down! Easy Terms!

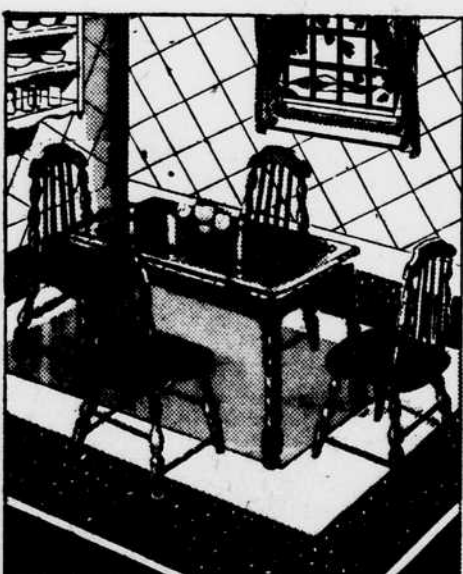


24-Piece APEX Washer Outfit

Enjoy the time and labor saving efforts of this group at a price the most limited budget can afford. Includes brand-new, fully guaranteed APEX washer, white enamel finish; ironing board, electric iron, rinsing tub and liberal 20-box supply of RINSO.

\$44

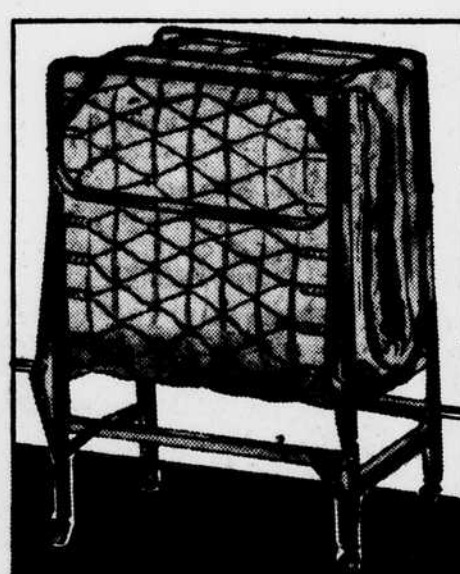
No Money Down! Easy Terms!



**5-Pc. Porcelain-Top
Breakfast Set
\$19.95**

Smartly styled and solidly constructed. Porcelain top table with slideout leaves and four well-braced chairs to match. Several colors.

No Money Down!



**Foldaway Bed
and Pad
\$8.95**

For spare bedroom or guest room. Heavy steel construction with built-in spring, complete with comfortable pad.

No Money Down!

COMPLETE ROOM

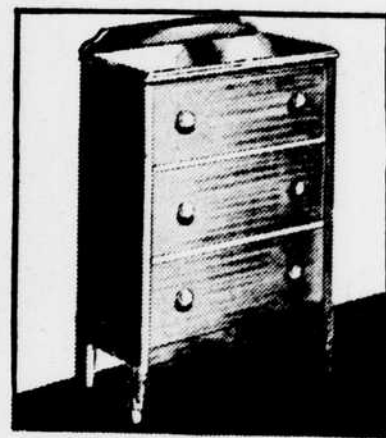
On Easier-Than-Ever-Credit
EVENING APPOINTMENTS ARRANGE



**Child's Crib
\$8.95**

Enamel or maple finish. Sturdily constructed. Complete with strong spring and warm blanket.

No Money Down!



**Chest of Drawers
\$6.88**

Three drawers, hardwood construction in walnut grain finish.

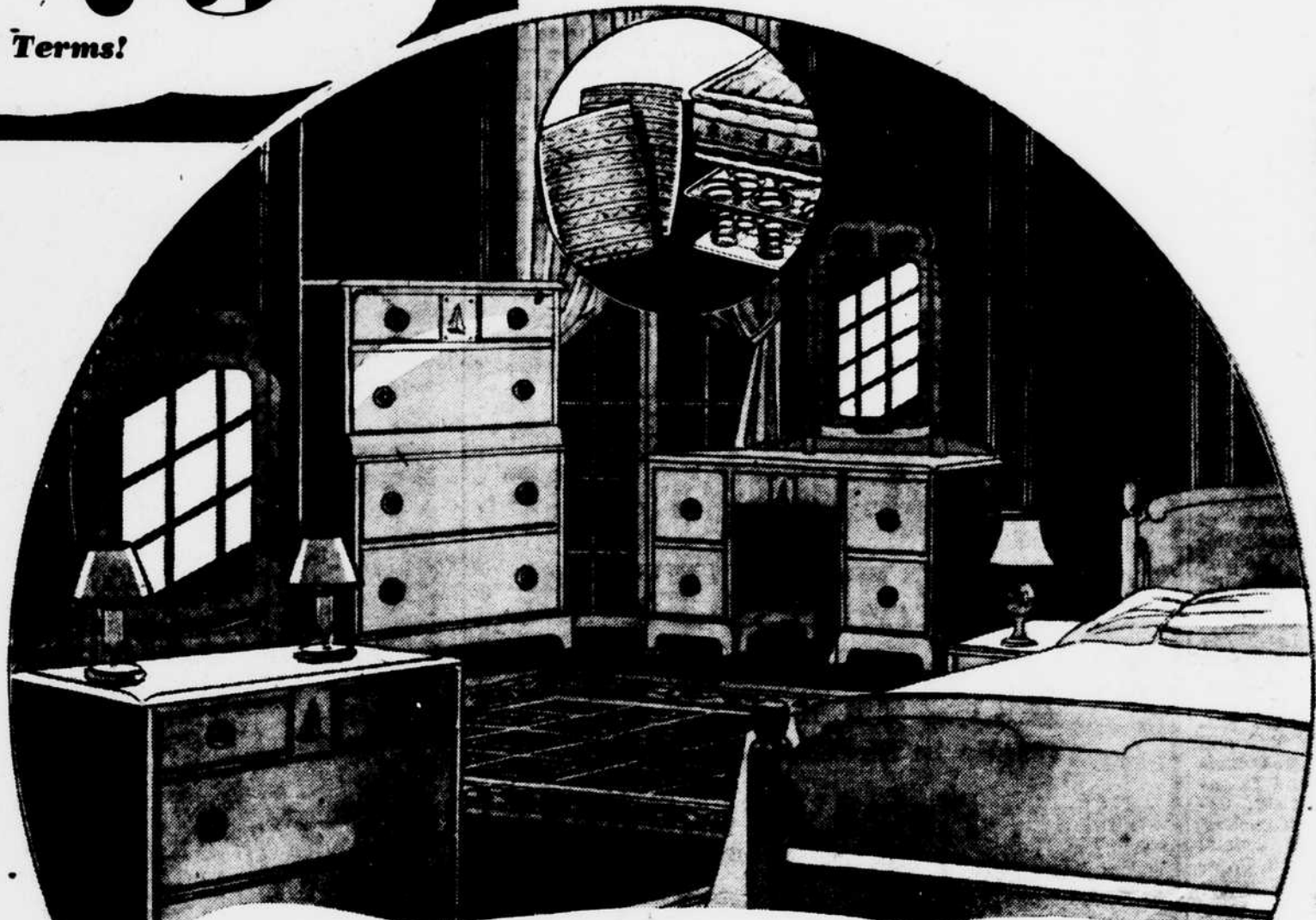
Easy Terms!



**Cocktail Table
\$5.99**

Duncan Phyfe base, brass tip feet, glass top. Walnut finish over gumwood.

No Money Down!



9-Piece Solid Maple Bedroom Ensemble

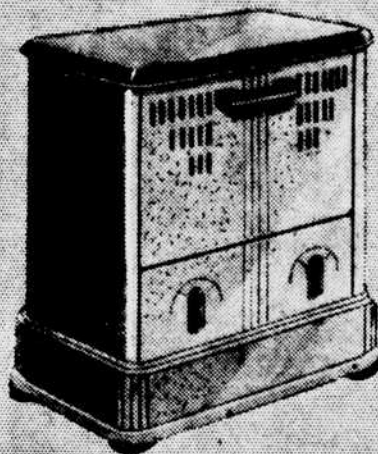
Exactly as pictured, nine pieces including a charming chest of drawers, bed and choice of dresser or vanity in solid honey color maple, genuine SIMMONS coil spring, fluffy mattress in serviceable ticking, two feather pillows and two attractive solid maple vanity lamps with matching shades. A super-value at the price!

\$66

No Money Down! Easy Credit Terms!

STOVES & HEATERS

On Easy Credit Terms!

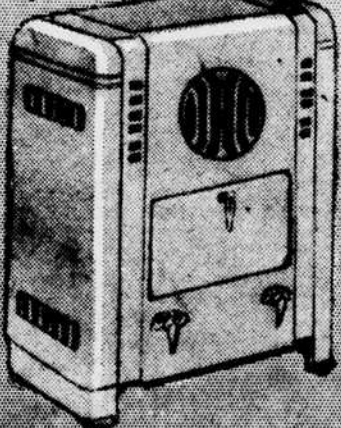


**Florence
Space Heater
\$18.75**

Discontinued model at a special close-out price! Porcelain exterior and porcelain burner! A real value!

**Circulating
Oil Heater
\$9.88**

Attractive cabinet design with one burner unit. Economical and efficient to operate.



**Florence
Oil Circulator
\$24.75**

2-Burner high efficiency model with modern design porcelain cabinet. Easy on fuel consumption.



Complete 7-Pc. Living Room Set

A quality-built group that will lend an atmosphere of comfort and beauty to the living room at moderate cost. Piece cotton tapestry suite of guaranteed occasional chair, coffee table, end table, floor lamp. Pieces are well constructed to insure long life.

No Money Down!

**Liberal Trade
for Your Old**

The HUB