

Atom Test Scientist Warns Public That Bomb May Be Fizzle

By the Associated Press
KWAJALEIN, June 29.—A warning to the public that the atomic bomb to be dropped at Bikini lagoon might be a "fizzle" was voiced by an eminent scientist today.

The warning came from Dr. Karl Compton, chairman of the joint chiefs of staff evaluation board.

"My scientific colleagues," he told a press conference, "say that even if we had a number of bombs, alike physically, each would vary from a fizzle to maximum efficiency."

"There is a certain probability—though small—that this bomb might fizzle. I am anxious that this be realized so the public will not think we are allying if we get poor results."

Efficiency Data Awaited.
Whether the bomb, now hidden behind a canvas-covered area on this island, will provide a magnificent explosion or a smoky fizzle will be known Monday morning—weather permitting.

Bradley Dewey, president of the American Chemical Society and a member of the Evaluation Board, observed that if the bomb "went dud it might not be recognized as such until we get efficiency measurements from instruments."

"A dud probably would produce a whacking good explosion," Mr. Dewey said, "but perhaps it would not mushroom. There would be some activity."

If the bomb does mushroom, 20 white mice will be flown into the interior of that great, colorful plume.

Dr. Harold Batchelor of Fredrick, Md., biologist and bacteriologist for the Joint Chiefs of Staff, arrived at Eniwetok today with the mice. Five will be placed in each of the four B-29 "drones" which will be guided into the umbrella at 13,000 to 30,000 feet.

The object, Dr. Batchelor said, is to learn if the mice will die. Mice were chosen because they are physiologically similar to humans.

Congress Group Visits Target.
Meanwhile, Associated Press Correspondent Paul Kern Lee radioed from the U. S. S. Panamint, that 10 members of Congress visited three of the vessels today.

In the party were Senators Hickenlooper of Iowa and Cordon of Oregon, and Representatives Engel of Michigan, Izac of California, Gillespie of Colorado, Rooney of New York, Norrell of Arkansas, Anderson of California, Bates of Massachusetts and Bradley of Pennsylvania.

After surveying the epic and span carrier Independence and the evil-smelling Japanese battleship Nagato, the majority of the group voted to give up the inspection in favor of a swim. But Mr. Engel insisted on visiting the target ship Nevada, remarking that he "didn't come 7,500 miles to go swimming."

The party agreed reluctantly, climbed more ladders and then adjourned to the elaborate but jerry-built officers' club. All plan to return to the United States after the first test.

Bikini

(Continued From First Page.)

size that the plan is on the way now and if there is no change by 10 o'clock, the bomb will be dropped.

"But I also reserve the right to cancel the drop tomorrow morning in the event of unforeseen weather changes."

Little Likelihood of Rain.
Rear Admiral W. S. Parsons said dryness in the air above 5,000 feet "indicates we will have very good luck with clouds, and that there will be little likelihood of rain— which is good from a radiological point of view."

Presumably, engineers began preparing to load the atomic bomb aboard the B-29 "Dave's Dream" shortly after Admiral Blandy made his decision on the weather. The bomb was in a restricted area on Kwajalein. It will not be armed—made ready for firing, that is—until it is airborne above daybreak.

As soon as possible after daybreak, the pilot of the super fortress—Maj. Woodrow P. Swancutt of Wisconsin Rapids, Wisconsin—will take off and the fleet of aircraft assigned to the show will begin maneuvering into position. The other planes will carry cameras, recording instruments, newsmen,



BOMB at instant of detonation creates giant cloud, extending downward with blast, mushrooming into stratosphere.

DRONE planes, Navy Hellicops and Army Fortresses, controlled by radio, collect data during explosion.

OLD "MARU," the battleship Nevada, painted orange, is target for bombardier in B-29. Over score of ships are within 1,000 yards of bulls-eye.

HIGH WAVES move in concentric circles from target area.

DEPTH of lagoon is about 150 feet.

GOATS, PIGS, some clad in clothing, together with military equipment secured on test ship decks.

SOUTH SEAS FURY—Above is Associated Press Artist Hank Barrow's conception of the scene at Bikini atoll immediately after the explosion of the atomic bomb late today, Washington time. More than 37,000 men are at the little Pacific island to

participate in the test. The experiment known as "Operation Crossroads," is a joint Army, Navy and Air Force undertaking and is designed primarily as test of sea power in the atomic age.

Presidential Authority To Ration, Allocate Materials, Renewed

By the Associated Press
President Truman last night signed an amended version of the Second War Powers Act, which renews his authority to ration and allocate scarce materials.

The bill contains a specific provision it cannot be used as authority for fixing price ceilings on commodities or rents.

Signing of the measure also bestows on President Truman for another year the extraordinary powers to requisition property and give priorities.

The authority, used during the war to concentrate the economy upon the winning of military victory, is continued as a peacetime weapon of the Government to steer the economy toward reconversion and high production.

Although the Civilian Production Administration is the principal user of the war powers, through its allocation controls over tin, lead, antimony, chemicals and other items necessary in the reconversion of industry, the Agriculture Department has used them increasingly of late.

The act is the authority by which the change in plans was made by Secretary of the Navy Forrestal, who is at Bikini.

After the "neutral voice" broadcast is over, the press services' copy will be transmitted via radio-telephone circuits routed from the main communication ship of the Bikini fleet, the Appalachian, through Navy radio at Pearl Harbor and San Francisco.

Nine wire services or agencies, including the Associated Press, will share four cleared circuits during the first half hour after the bomb is dropped. During that time dispatches will be limited to takes of 250 words each. The second half hour the wire services will be limited to two teletype channels.

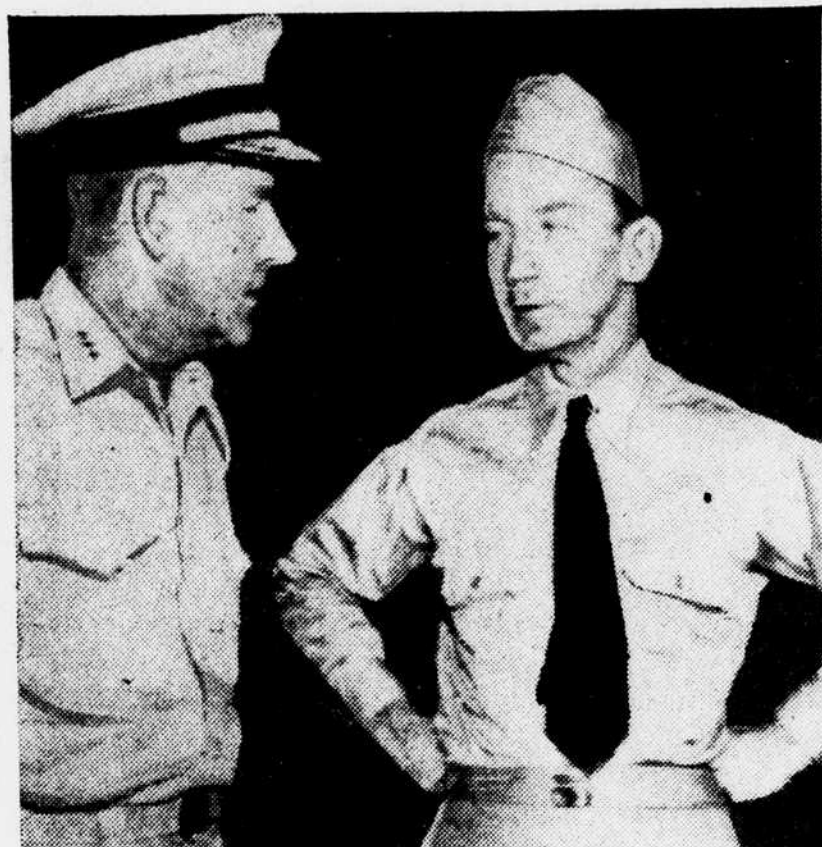
William Henry Harrison, ninth President of the United States, was the first to die in office.

PENS REPAIRED

Prompt Service
D. J. HUGHES CO.
Fountain Pen Makers Over 21 Years.
503 14th. Opp. Willard Hotel

Dress Up Your Car Seat Covers

for Pontiac and other General Motors Cars
Prompt Installations
Arcade Pontiac Co.
Washington's Largest Pontiac Dealer
1437 Irving St. N.W.



BOMB TEST THE SUBJECT—Secretary of the Navy Forrestal (right) as he conferred with Vice Admiral W. H. P. Blandy aboard his flagship, the U.S.S. Mt. McKinley, yesterday. This joint Army-Navy Task Force 1 photo was radioed to San Francisco from the McKinley at Bikini.

All District Stations to Carry Reports of Atom Bomb Blast

Washington radio listeners will get an eyewitness account of the epic-making atom bomb drop at Bikini Atoll today no matter which station they tune in upon.

Through a pool arrangement, the major networks will relay an on-the-spot account of the historic experiment through all local outlets. Because of the uncertainty of timing, most stations will interrupt regularly scheduled broadcasts to bring in the bombing.

Barring last-minute postponement or delay because of weather conditions in the Marshall Islands, the shattering missile will plummet down on the "guinea pig" fleet at about 4:30 p.m. Eastern Standard Time.

Bill Downs, Columbia Broadcasting System correspondent, will be riding in an observation plane alongside the big B-29 which will lose the A-bomb. His description of the drop will be heard over WMAL, WRC, WTOP, WOL, WINX, WWDC and WPIK.

Subject to change, here is the way the various stations are lined up to cover the bombing:

WMAL—11 a.m., roundup of ABC network commentaries from men on the scene; 1:30 p.m., account of the take-off from Kwajalein of the bombing plane; 5 p.m., program to

include the actual bomb drop description by Mr. Downs, followed by further accounts from ABC men on ships near the target lagoon; about 7:30 p.m., discussion of the experiment by atomic scientists from various parts of the country.

WRC—5 p.m., Mr. Downs' account of the bomb drop, plus observations by on-the-scene observers; additional news and comment at 3 p.m. and 10 p.m.

WTOP—1:30 p.m., take-off of the bombing plane from Kwajalein; 5 p.m., Mr. Downs' account of the bomb drop; 7 p.m., interview with the pilot and crew of the bombing plane; 10 and 11:15 p.m., additional

news and comments on the experiment.

WOL—1:30 p.m., take-off of the bombing plane from Kwajalein; 5 p.m., account of the bomb drop; 6:15 p.m., interview with the bombing plane crew; 9:30 p.m., scientists' comments on the experiment from different parts of the Nation plus a talk from Washington by Senator McMahon, chairman of the Senate Atomic Energy Committee.

WINX—5 p.m., Mr. Downs' account of the bomb drop; hourly relays of news and comment thereafter until 1 a.m. Monday.

WWDC—1:30 p.m., take-off of the bombing plane from Kwajalein; 5 p.m., account of the bomb drop; 7:15 p.m., any further pooled broadcasts from the scene.

WPIK—Will carry the same information as WMAL on a relay system.

Man Faces Grand Jury In Theft of Watches

John Renson Lee, 29, of Charlotte, N. C., who police said lost a leg in a railroad accident during childhood, was held for the grand jury yesterday on a charge of breaking into a jewelry store at 812 F Street Thursday night.

United States Commissioner Needham C. Turnage set bond at \$2,000 for Lee, who said he was a barber. Police said Lee was arrested by Police Quincy Sawyer, as he attempted to leave the store with 58 watches valued at nearly \$3,000.

ELECTRICAL WIRING—REPAIRS—FANS
ELITE ELECTRIC CO.
1116 13th St. N.W. NA. 4093

BALDERSON'S NEWEST INSECTICIDES FOR HOME and GARDEN
NA. 9791
626 Indiana Ave. N.W.

KIDDIES' SWIM POOL

Heavy wood and steel frame. Extra heavy marine water proof duck. The children will love it. 3-ft. wide—5-ft. long—holds 1-ft. of water.

A few left at **\$17.50**

Manufactured and Sold by
TAKOMA CHAIR CO.
1117 7th St. N.W. We Deliver RE. 9232

MONDAY, JULY 1st.

NOW WE ARE READY!

Notwithstanding the fact that our NEW and ENLARGED Sales and Show Room is not yet ready for the public... OUR SERVICE DEPARTMENT WILL BE OPEN TOMORROW! More space—enlarged facilities—air conditioned and Fluorescent lighted, this model SERVICE DEPARTMENT will provide greater efficiency than even the high standards which built our enviable reputation in prewar days.

FACTORY TRAINED EXPERTS

Every former key man in our service department was retained (during our closed-down period)... we merely "loaned" them out by arrangement, until the day when we would resume. THESE MEN ARE BACK—every one a FACTORY TRAINED EXPERT—every one well informed in our methods of operation which give the ultimate in service to OURISMAN customers. We have supplemented these men with an additional staff of well-qualified men, recently returned from our Armed Services.

SERVICE FOR ALL MAKES OF AUTOMOBILES

While our function is primarily CHEVROLET—our facilities and services extend to any make car in need of repair—AT THIS MOMENT YOU CAN RECEIVE IMMEDIATE ATTENTION—

Drive Your Car In Tomorrow—For Service!

OURISMAN Chevrolet
610 H STREET N. E.

OPEN 8 A.M. TO 6 P.M. • PHONE LUDLOW 0600



Toddle Town

The "Youngest set" is never too young to be choosy. Even at the infant stage, baby wants his own domain with furniture that's bright and pretty, as well as sturdy. See these pieces and others of equally smart design and true lifetime quality at Mayer's delightful Toddle Town.

(a) HI-CHAIR, Maple or waxed birch finish. Adjustable foot rest and tray... \$7.95

(b) CRIB, Maple or waxed birch finish. Adjustable metal spring. Raised decoration... \$39.95

(c) CARRIAGE, Collapsible heavy frame. Padded interior... \$39.95

(d) PORCH SWING 4 passenger. Extra heavy construction... \$12.95

(e) "PAL" WALKER, Heavy metal frame. Removable handle and foot tray... \$9.95

(f) TABLE AND CHAIR SET, Sturdy construction, leatherette seats on chairs. Colorful decorations... \$19.95

Mayer & Co.
SEVENTH STREET - ZONE 4 - BETWEEN 9 AND 1