

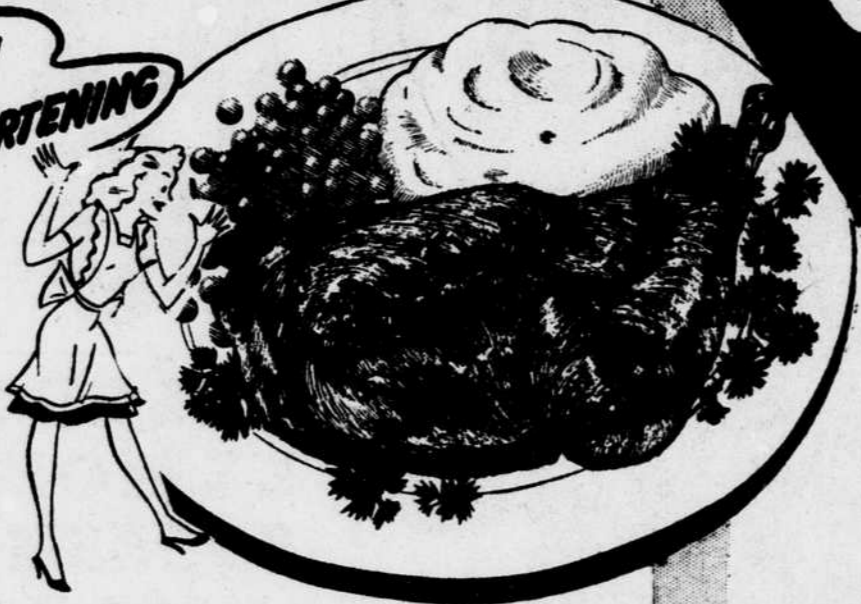
# CHICKENS

Tender Young Birds You Can *FRY* or *BROIL!*

**BROILED CHICKEN  
REQUIRES NO SHORTENING**

**DIRECTIONS FOR  
BROILING CHICKENS:**

Before cooking the chicken wipe it as dry as possible. Sprinkle with salt and pepper, and if desired lightly dust with flour before placing in the broiler, or brush with melted fat. Always start cooking the chicken with the skin side away from the heat. Remember to keep the heat very moderate and to have the meat several inches from the flame or heating element. Turn the chicken several times as it browns, and baste frequently with the pan drippings. A 2-pound chicken (dressed weight) when broiled at moderate heat will need from 35 to 45 minutes to cook evenly to the bone. Serve hot off the grid, with the pan drippings poured over it.



Freshly killed, fancy  
Grade A. New York  
dressed.

**lb. 43<sup>c</sup>**

# SAVE AT SAFEWAY

*Elberta*

## PEACHES

Fancy Yellow Freestones **3 lbs. 29<sup>c</sup>** Original Bushel Basket **\$4.80**



**Check These Values**

**CIGARETTES \$1.31**  
Popular Brands 2 pkgs. 27c ctn.

**DORSETT 35<sup>c</sup>**  
Chicken and Noodles 16 oz. Jar

**VAN CAMP'S 29<sup>c</sup>**  
Chili Con Carne, with Meat 17 oz. Jar

**DROMEDARY 18<sup>c</sup>**  
Gingerbread Mix—Just Add Water pkg.

ENTER THE THRILLING  
EDWARDS COFFEE CONTEST



25 BENDIX de luxe Home  
Laundries  
25 BULOVA 17-Jewel Wrist  
Watches  
\$2,500.00 in CASH PRIZES  
FREE ENTRY BLANKS AT SAFEWAY.

lb. JAR  
**29<sup>c</sup>**

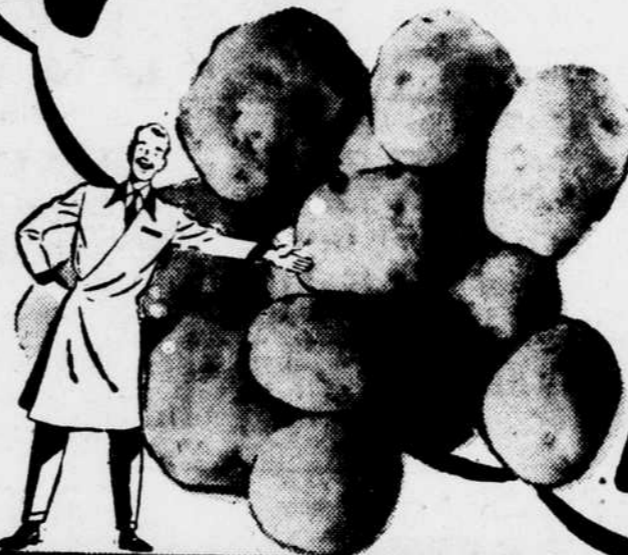
**Canning Supplies**

Enjoy delicious summer foods next winter by canning while they're in season. First step is to visit your nearby Safeway for canning needs.

Fruit Jars Pints dot. **55c**  
Fruit Jars Quarts dot. **65c**  
Jar Caps Zinc pkg. of 12 **25c**  
Jar Rubbers 1 lb. **5c**  
Paraffin Wax pkg. **12c**  
Fruit Pectin Cans 8 oz. bot. **23c**

EAT MORE

# POTATOES



- They're Plentiful!
- They're Nutritious!
- They're Thrifty!
- They're good so many ways!

**10 lbs. 33<sup>c</sup>**



## LUCERNE finer milk products

GRADE A MILK 2 qts. **31<sup>c</sup>**  
COFFEE CREAM 1/2 pt. 18<sup>c</sup> | pint 33<sup>c</sup>  
BUTTERMILK 2 qts. **23<sup>c</sup>**  
DARI-DRINK Chocolate Flavored 2 qts. **23<sup>c</sup>**

At Safeway . . .  
U. S. GOVERNMENT GRADING  
ASSURES YOU OF QUALITY

# EGGS

In few other items is quality so important as in eggs. And, unfortunately, you can't determine the quality of an egg by looking at the shell. That's why Safeway employs licensed Government graders who look inside the shell, with the aid of modern candling equipment, and grade each egg according to what they see inside, plus weight. Thus you are assured of always getting the quality you pay for at Safeway.

Breakfast Gems  
**LARGE GRADE A doz. 55<sup>c</sup>**  
Morning Star  
**LARGE GRADE B doz. 47<sup>c</sup>**  
Cream o' the Crop  
**EX. LGE. GRADE A doz. 57<sup>c</sup>**

**RENUZIT** gallon **65<sup>c</sup>**  
French Dry Cleaner for Home Use

**IMPERIAL** each **79<sup>c</sup>**  
Five String Brooms

**OLD DUTCH** 2 cans **15<sup>c</sup>**  
Cleanser

Spic & Span 16 oz. **19c**  
Drano can **18c**  
Vano Cleaning Fluid 32 oz. bot. **25c**  
Clorox 32 oz. bot. **15c**  
Parson's Ammonia bot. **19c**  
Rain Drops Water Softener 24 oz. bot. **23c**  
Liquid Starch Zippy 32 oz. bot. **19c**  
Paste Wax Aero 12 oz. can **21c**  
No Rub Wax Wilbert's 16 oz. can **35c**  
Silver Polish Wright's 8 oz. jar **17c**  
Bab-O 2 cans **21c**

**LIGHT BULBS**  
40 or 60 Watt  
each **12<sup>c</sup>** Tax Included

**BOON**  
The New Liquid Cleaner  
32 oz. Bottle **19<sup>c</sup>**

**Juices**

Grapefruit Juice Florida Gold 2 No. 2 cans **25c**  
Grapefruit Juice Silver 46 oz. can **35c**  
Grapefruit Juice Nip 46 oz. can **32c**  
Blended Juice Florida House No. 2 can **15c**  
Blended Juice Gold 46 oz. can **43c**  
Blended Juice Vita Nip 46 oz. can **37c**  
Orange Juice Golden Blend O'Gold 46 oz. can **21c**  
Orange Juice Nip Full No. 2 can **20c**  
Orange Juice O'Gold Golden 46 oz. can **51c**

**Teas**

Canterbury Tea 1/4 lb. **22c**  
Canterbury Tea 1/2 lb. **43c**  
Tea Bags Canterbury 14 pkgs. **13c**  
Lipton's Tea 1/4 lb. **26c**  
Tea Bags Lipton's 14 pkgs. **18c**  
McCormick Tea 1/4 lb. **25c**  
Tea Bags McCormick 14 pkgs. **22c**  
Salada Tea 1/4 lb. **24c**  
Tea Bags Salada 14 pkgs. **15c**

**Cereals**

Grape Nuts pkg. **14c**  
Grape Nuts Flakes 7 oz. **9c**  
Post Tens Variety Cereals pkg. **24c**  
Kellogg's Variety Cereals pkg. **23c**  
Corn Flakes Kellogg's 11 oz. **11c**  
Rice Krispies Kellogg's pkg. **12c**  
Cheerios pkg. **12c**  
Wheaties 12 oz. **15c**  
Betty Crocker Breakfast Tray Cereals pkg. **22c**  
Shredded Ralston pkg. **11c**  
Puffed Rice Sparkies Quaker pkg. **12c**  
Whiffs O'Wheat pkg. **10c**

Prices effective until close of business Saturday, July 20, 1946, except produce prices, which are subject to daily market changes. NO SALES TO DEALERS. WE RESERVE THE RIGHT TO LIMIT QUANTITIES.

**JUICE ORANGES**  
from Sunny California  
Growing conditions this year have resulted in an orange crop running toward the small sizes. These small oranges are heavy with sweet, sparkling juice and, since it's the juice that counts in oranges they are a real value.  
**lb. 11<sup>c</sup>**

**PEANUT BUTTER**  
Beverly Smooth Grind 1 lb. jar **29<sup>c</sup>**  
Schindler's Coarse Grind 1 lb. jar **32<sup>c</sup>**

**DELMONICO**  
Macaroni or Spaghetti 7 oz. Pkg. **6<sup>c</sup>**

**VINEGAR**  
Old Mill 1/2 gal. **35<sup>c</sup>**  
White House gal. jug **63<sup>c</sup>**

**JAMES RIVER**  
Smithfield Sandwich Spread  
4 1/2 oz. Jar **21<sup>c</sup>** | 7 oz. Jar **30<sup>c</sup>**

**SALT**  
Diamond Crystal 26 oz. Pkg. **7<sup>c</sup>**  
Morton's 26 oz. Pkg. **7<sup>c</sup>**

# SAFEWAY