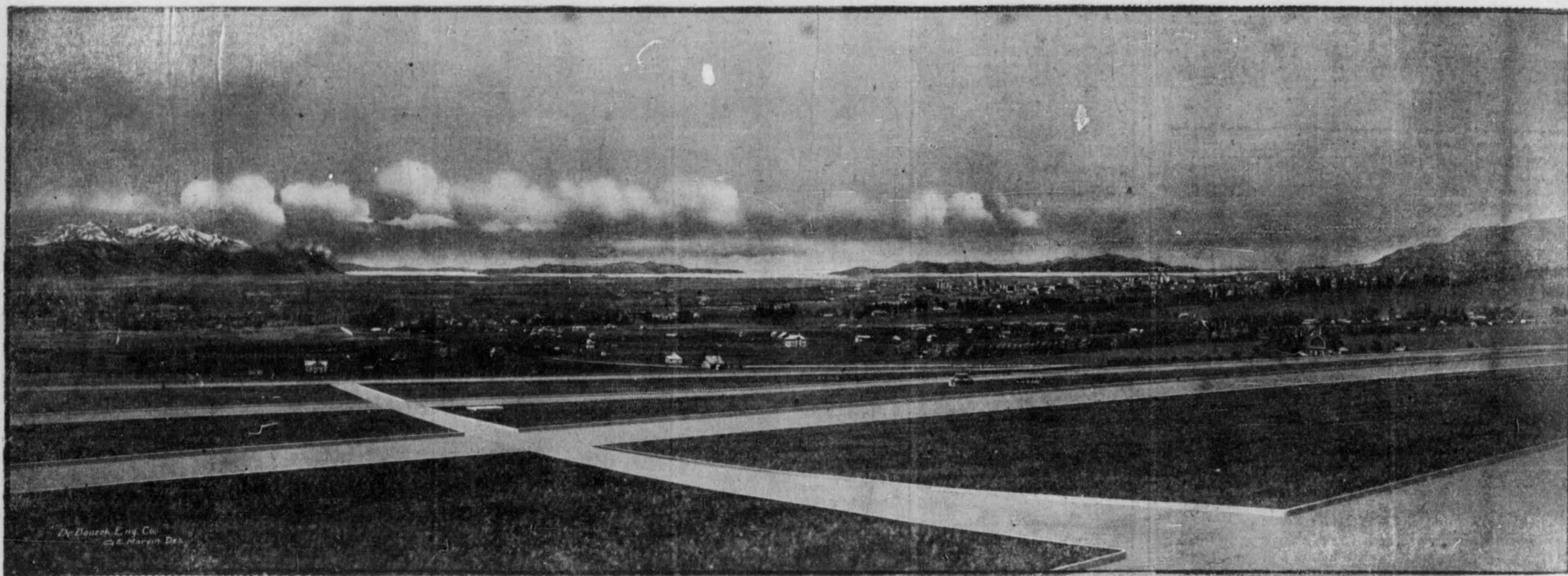


Suburban Lots of Beautiful View

MONHEIM PARK



View of Salt Lake City and Valley from Monheim Park

A STRAWBERRY FESTIVAL

So confident are we in the ability of Monheim Park to speak for itself in the comparison of additions, that we have instituted something unique in the history of Salt Lake real estate selling. We know that if you see the property you will be convinced, therefore we invite every interested party to share the strawberry festival we will give on

JUNE 5th

We invite you one and all for if you do not buy you at least will be convinced of the merit of Monheim Park and thereby direct your friends. Remember the date—June 5th, for the festival will last from 10 to 4. You can pluck the strawberries from the patch on this ground if you choose and cake and cream will be served as well. Cut out the coupon mailing it to us as soon as possible in order that we may know the number to expect. Take the Sugar House Car on June 5th; get off at the end of the line and leave the rest to us. Auto owners are invited to make this trip your Sunday ride. If you call at the office we will be pleased to arrange a free car fare. Remember all are invited.

DESERET NEWS COUPON

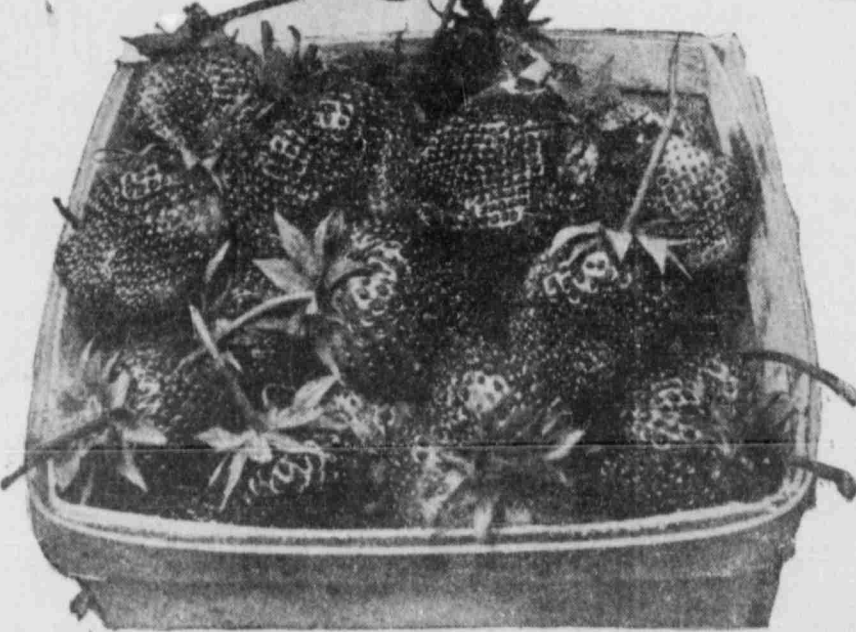
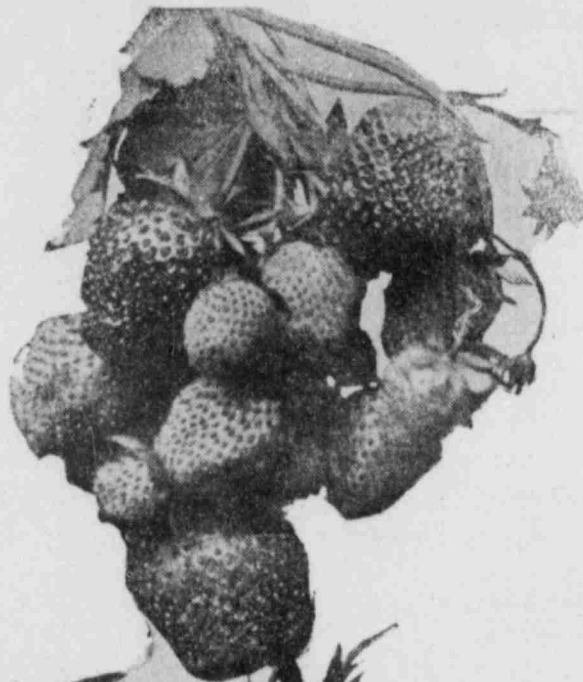
I desire to attend your Strawberry Festival on June 5th at Monheim Park.

Name

Address

(Mail this to Monheim, Dowse & Morris, 332 State.)

Our automobiles are always at your service. Call on us any day and you can be back in half an hour.



THE BERRIES THAT AWAIT YOU ON JUNE 5TH.

Monheim Park is situated on the Southeast Bench, directly in line with the growth of the city. A new car line, a new school house, a growing district all combine to make its attractiveness unexcelled. We give you an opportunity to see the addition free on

JUNE 5th

and enjoy a picnic at the same time. Men will be on the grounds to describe the property to interested parties; but you one and all are welcome to the festival—the strawberries, cake and cream, the sunshine, beautiful view, auto ride and numerous other enjoyments we will have in store.

The lots in the addition are 25 to 44 feet wide and 132 to 144 feet deep, the prices of each ranging from \$125 and up, and the terms \$5 a month. The values are those of close in city properties, the prices those of the rural neighborhood. All we can say is "come," "come"—see for yourself.

REASONS

- 1—The addition is smooth, fertile and gentle in slope.
- 2—The prices are just half those of adjacent properties.
- 3—Monheim is 15 minutes from a mammoth new city park.
- 4—Monheim overlooks the valley with a view incomparably beautiful.
- 5—A car line is now 5 minutes away, another will go alongside.
- 6—Monheim has cool breezes in summer, mountain protection in winter.
- 7—A new school house is three blocks away.
- 8—The payments are so easy anyone can handle them.
- 9—The city is already crowding Monheim way.
- 10—The prices are rural, the values urban.
- 11—The streets are graded, the lots large.
- 12—Already beautiful homes are about to be constructed.

Accessible, beautiful fertile Monheim Park stands without a peer in the Southeast. To see is to be convinced.

MONHEIM, DOWSE & MORRIS

PHONES: BELL 2170; IND. 93.

EXCLUSIVE AGENTS.

332 STATE STREET.