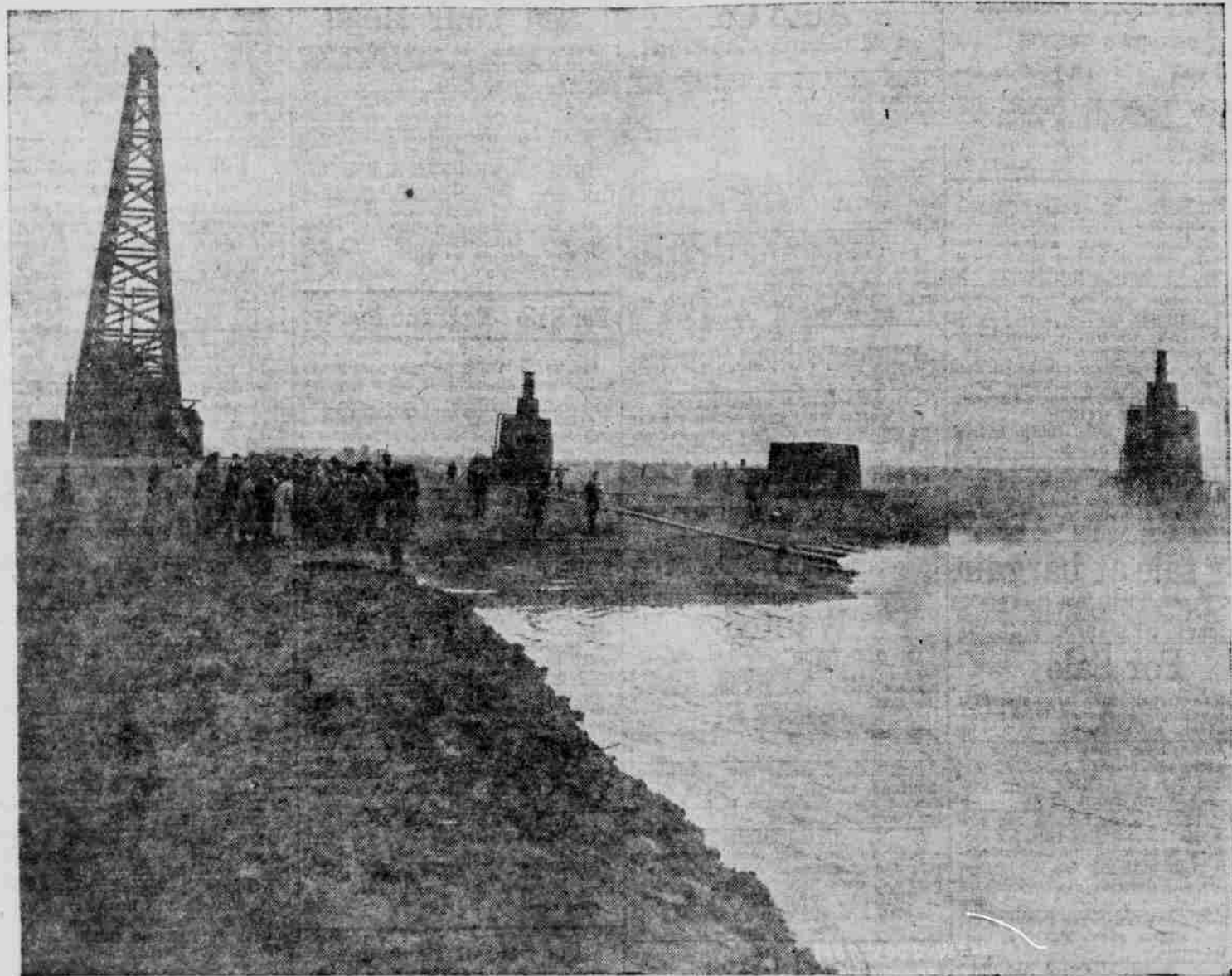


ARITEX OIL COMPANY

Developing Holdings in Both the Burkburnett & Ranger Fields
VIEW OF THE FAMOUS NORWOOD GUSHER



This actual photograph snapped just as the Norwood "came in." It gushed out about 35,000 barrels per day, finally settling down to a consistent production now reported at 15,000. On this basis, its production is earning (42° oil @ \$2.25 per bbl)

**One Million Dollars
Per Month
For Its Stockholders**

\$80,000.00

according to latest reports, this amount was paid last week by the

Humble Oil Company

for a 35-acre lease less than 1/4-mile from our Hall lease.

Note the close proximity of these properties to the Hall lease on map below.

We have ample working capital right now sufficient for all preliminary operations. In fact, the cash amounts subscribed by the syndicate comprising 22 prominent Arizona business men, whose names were published three days ago, provides immediately available cash working capital of \$45,000. This sum is ample to meet all preliminary expense and it will easily cover the entire cost of drilling at least on one well.

Although the directors of the ARITEX OIL COMPANY originally intended not to authorize the sale of any stock in the company to the public, for the time being at least, recent important developments on properties adjoining and in close proximity to several of our holdings clearly demonstrates the advisability of beginning drilling operations on several of our leases simultaneously without delay.

To this end, the directors have decided to authorize the offering of a portion of the first issue of stock, comprising 100,000 shares for sale at par value, \$1.00 per share. Reservations of these shares may now be made by investors desiring to participate in this enterprise.

Applications will be filed in the order of their receipt by the company and held pending action of the Corporation Commissioners of the State. When their authorization to issue the shares is granted, subscriptions will be honored in the order of their receipt.

Attention is particularly directed to the following clause which forms a part of the application filed with the Corporation Commissioners of Arizona:

"The company desires to obtain subscriptions in the interim and such subscriptions to be accompanied by cash, but to be returnable to stockholders in the event that drilling operations do not start within thirty days from date of this application."

A large number of applications for shares have already been received and we advise those wishing to be assured of the opportunity to participate with us to file their reservations at once for whatever amount is desired.

The company will positively expend its own funds, including the syndicate subscription of \$45,000, on completing preliminary operations. However, since it has been decided to broaden the scope of these operations on a large scale and to issue a portion of the First Issue for public subscription, our first expenditures of these syndicate funds will be devoted to covering the initial operations on several of our holdings simultaneously, instead of completely developing a single lease or two as originally intended.

CLASS OF SERVICE	SYMBOL
Day Message	Blue
Night Message	Red
Day Letter	Blue
Night Letter	Red

WESTERN UNION
TELEGRAM

NEWCOMB CARLTON, PRESIDENT (GEORGE W. E. ATKINS, FIRST VICE-PRESIDENT)

CLASS OF SERVICE	SYMBOL
Day Message	Blue
Night Message	Red
Day Letter	Blue
Night Letter	Red

If none of these three symbols appears after the check (number of words) this is a day message. Otherwise the character is indicated by the symbol appearing after the check.

176 SBF

R. Allyn Lewis

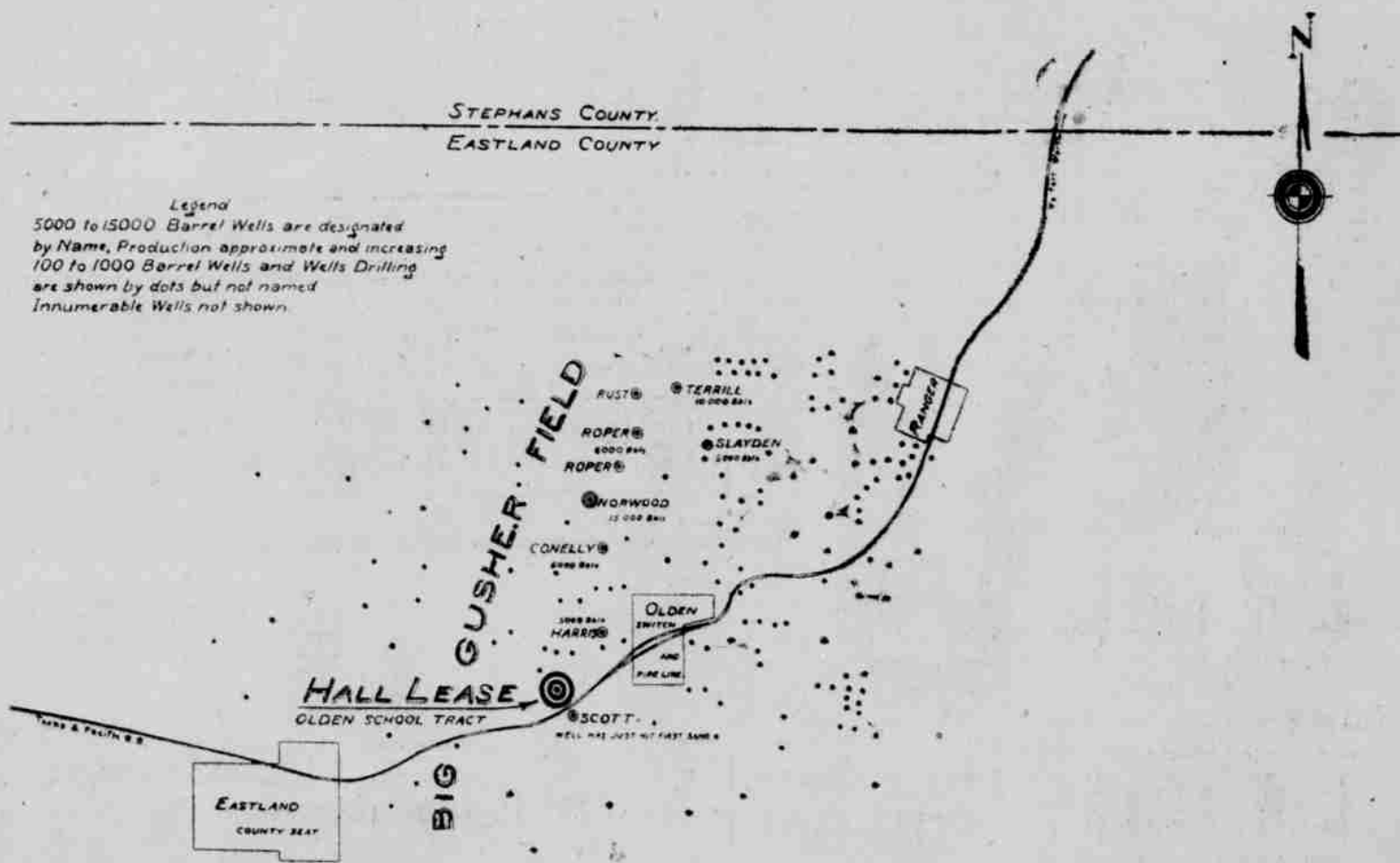
119 N. Central Avenue, Phoenix, Ariz.

Burke Bethel derrick on location Number One will be completed Wednesday. Part of building material on ground at present. Completions during past week in Hardin tract were McMann Oil Company Number Two six hundred fifty barrels, McMann Oil Company Number Six eight hundred twenty-five barrels.

SHEPARD AND COMPANY,
827 PM

The accompanying map shows the ideal location of the Hall lease. In the very heart of the proven section of the Ranger district. This is the field of deep wells and big producers that flow constantly. Drilling on the Hall lease will start just as soon as the contract covering same can be arranged. Bids have been requested from reliable drilling contractors and as quickly as the costs can be determined and details completed, work will begin immediately.

On two of our best locations in the Burkburnett field like steps have been taken preparatory commence drilling as rapidly as details can be arranged. We are exerting every effort to complete our first well at Burkburnett not later than May 1st. Three wells were brought in on Block 75, Burkburnett, during the past week. These producers are on the block immediately adjoining our Burke-Bethel holdings which are located on block 74. Recent reports show that producers are being brought in on the very edge of some of the ARITEX OIL COMPANY holdings and we are exerting every effort to facilitate early drilling operations with the utmost possible speed.



REMEMBER that this is an Arizona Corporation, backed by prominent Phoenix business men, who have expressed their faith in its unqualified success with their cash; that only a limited portion of the first issue will be offered to the public at this time; that producing wells are coming in on adjoining leases and we may not need your subscription if you delay.

Detach and Mail

Date

R. ALLYN LEWIS,

119 North Central Ave.,
Phoenix.

Please reserve for me shares of Capital Stock of the ARITEX OIL COMPANY at the par value price of \$1.00 per share.

I enclose herewith (Check, M. O., Draft) for \$..... in payment of same.

This application is made subject to authorization of the Commissioners of Corporations of the State of Arizona.

(Signed)

Address

Adams Hotel Block
Phone 4447

R. ALLYN LEWIS

119 N. Central Ave
Phoenix