

STILL MORE DELAY IN MATTER OF STREET RAILWAY CO. PAVING

Action by the city commission toward forcing the Phoenix Street Railway company to live up to the terms of its franchise in paving its rights-of-way met another check yesterday in the commission's meeting. S. H. Mitchell, manager of the company, appeared before the commission and asked that action be delayed another week on account of Mr. Chalmers' inability to attend.

After discussion, the commission decided to take up the matter in full at 10 o'clock next Monday morning, a meeting with company representatives being arranged.

The commission has been deliberating for several weeks on some action whereby the company can be made to live up to its franchise. Under the franchise the company is required to pave its right-of-way in the streets to conform with the paving of the street by the city. As a result of the company not doing this, it was charged that a dangerous condition of traffic resulted along certain streets, a condition which the city might be held responsible for in case of accident, the city attorney pointed out.

FIX FIVE-CENT FARE TO MORLEY'S CLUB

Commencing Saturday there will be 15-minute car service on the Washington street car line from 6:30 p. m. to 10 o'clock, and M. J. Morley has just purchased some large motor busses which will meet every car and carry his patrons to Morley's Country club and bring them back to the terminal free. The street car company will arrange so that there will be ample cars to return the people, the last car leaving Asylum road a little after midnight. On Sunday's holidays and special days the special car service will start at noon and continue until 10 o'clock with the five busses meeting each car. Any deviation from this schedule will be announced in ample time for the public to be fully informed.

The grand opening of the park occurs Saturday, and as an added special attraction will be the picture show which will be free to the patrons. Eddie Polo in the first episode of the "Lure of the Circus" will be the feature. This is conceded to be one of the greatest pictures ever made and has been shown to capacity audiences all over the country. It is full of thrills, heart interest and spectacular situations. Two of the best known circus clowns appear in support of Mr. Polo, and beautiful Eileen Sedgwick is his leading woman. There is a great comedy "Straight Crooks" and an enjoyable Hearst's News.

The cabaret show will include special numbers for the opening. The Night-tide sisters, Berle and Betty, will be seen in attractive specialties, Viola Jadow in hitting songs, and Pearl Meridi in saxophone numbers. The swimming pool is open and popular with the crowds that flock there every day.

Produce

First shipments of Imperial Valley tomatoes were received on the local market yesterday. Although the first of the season, the Imperial tomatoes received here by local wholesalers were of exceptionally fine quality. This variety of tomato will be received regularly in Phoenix until the end of the season, which will be in about two months. The end of the Mexico tomato season is now in sight, and the supply being received from that section is steadily decreasing.

A car of bananas and a car of lemons were among yesterday's receipts. In addition, a large variety of vegetables and fruit was unloaded, included in the shipments being rhubarb, string beans, artichokes, hothouse cucumbers and green chili.

A car of oranges and a car of netted Gem potatoes are expected to arrive some time today.

Dealers Are Paying		
	From	To
Ranch eggs	.40	
Butter	.60	.65
Fryers, lb.	.35	
Hens, lb.	.26	
Ducks	.18	
Poultry	2.25	
Turkey hens, lb.	.22	
Tom turkeys, lb.	.25	
Kaffir corn	2.25	
Wheat	3.85	
Barley	2.40	
Alfalfa	18.00	24.00
Bean	1.65	
Milo maize	2.60	
Head maize, ton	28	
Retail Selling Prices		
Almonds, lb.	.40	.45
Apricots	.40	.45
Turkeys	.35	
Hens	.40	
Ducks	.30	
Fryers, lb.	.60	
Butter	.65	
Sugar, 2 lbs.	.10	.25
Flour, 24-lb. sack	1.50	1.75
Apples, lb.	.12 1/2	.15
Bell peppers, lb.	.40	
Green chili, lb.	.40	
Cabbage	.10	
Lemons, dozen	.40	.45
Oranges, dozen	.40	.75
Bunch vegetables, 3 for	.05	
Lettuce, per head	.10	
Dry onions	.07	.08
White onions	.15	
Bananas, 2 lbs.	.25	
Peanuts, lb.	.50	
Artichokes, each	.30	
Celery, bunch	.20	.25
Potatoes, 100 lbs.	2.50	3.00
Sweet potatoes, lb.	.12 1/2	
Summer squash, lb.	.25	
Cauliflower, lb.	.25	
Walnuts, lb.	.40	
Olive oil	.25	
Prunes, lb.	.25	.35
Tangerines, dozen	.25	
Grapefruit, per box	4.00	
Grapefruit, per dozen	1.00	1.50
Tomatoes, lb.	.25	
Strawberries, box	.20	.35
Asparagus, bunch	.05	

MERCANTILE PAPER
NEW YORK, April 23.—Mercantile paper, 5 1/2 @ 5 3/4; sterling, 60-day bill, 5 1/2 @ 5 3/4; commercial, 60-day bill on banks, 5 1/2 @ 5 3/4; commercial, 60-day bill, 5 1/2 @ 5 3/4; demand, 5 1/2 @ 5 3/4; cables, 5 1/2 @ 5 3/4; government bonds and railroad bonds, firm. Time loans, strong. 60 days, 50 days and six months, 5 1/2 @ 5 3/4. Call money, firm; high, low and ruling rate, 5 1/2; closing bid, 4 1/4; offered at 5; last loan, 5.

Use The Republican Classified Page for results—read for profit.

WHY NOT YOU?

F. R. Carter of DeLeon, Texas, invested \$250 in Duke Well No. 2 and sold out for \$150,000

The following dispatch refers to one of our tracts which adjoins the Duke Wells, and lies between the Great Sinclair-Hogg and Phoenix Wells:

CLASS OF SERVICE	SYMBOL
Day Message	DL
Day Letter	DL
Night Message	NL
Night Letter	NL

WESTERN UNION TELEGRAM

NEWCOMB CARLTON, PRESIDENT GEORGE W. E. ATKINS, FIRST VICE-PRESIDENT

CLASS OF SERVICE	SYMBOL
Day Message	DL
Day Letter	DL
Night Message	NL
Night Letter	NL

206 SO 32 El Paso Texas 5PM Apr 17 1919.

A W FISHER

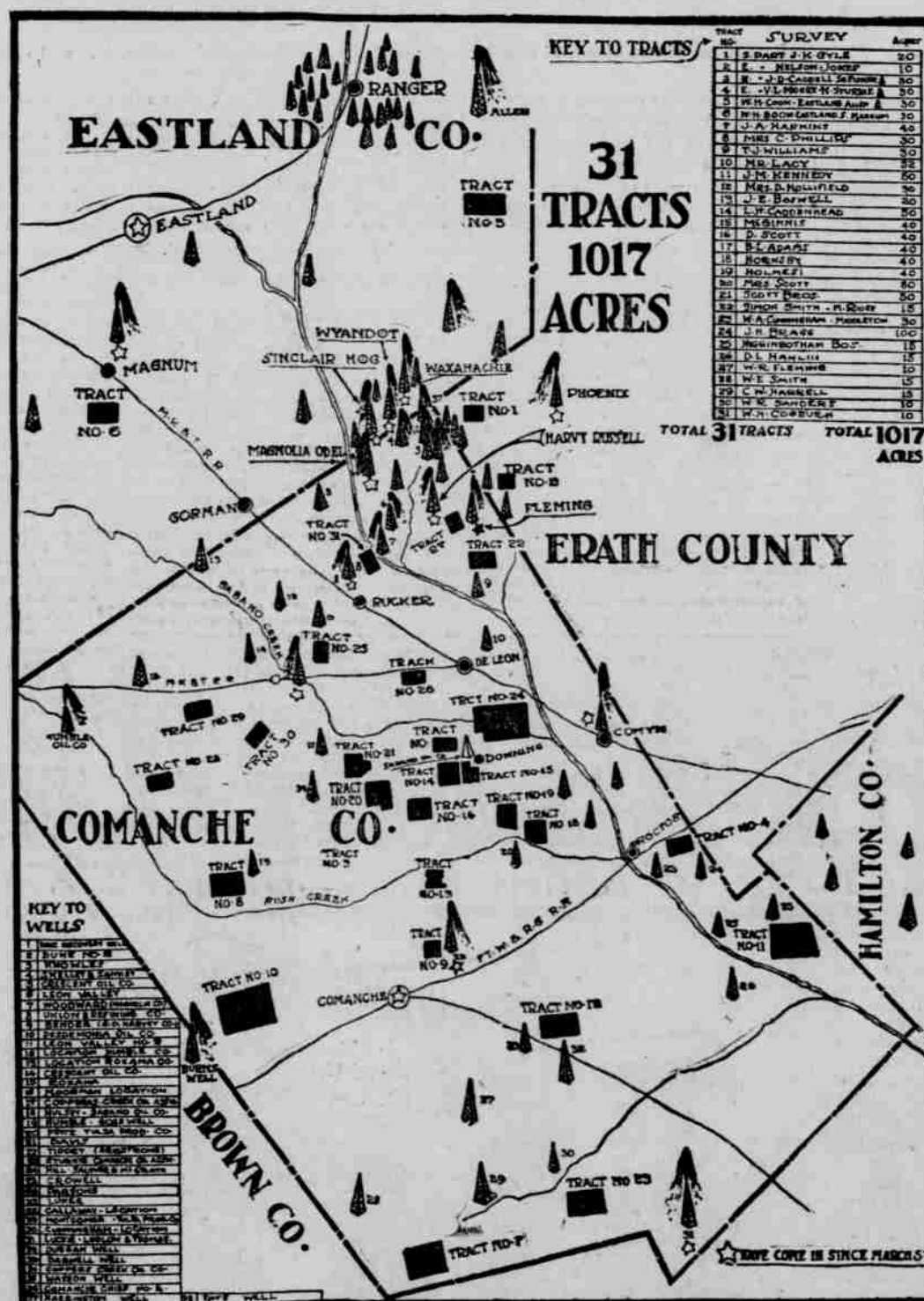
126 N Central Ave Phoenix

Comanche County Oil Company has made location and moved rig on tract number one work begins immediately location also made on tract number twenty seven Both locations between big producers

SHARPNACK & COMPANY

5:05 PM

LOOK AT THE MAP



1017
Acres

31
Tracts

In the Heart
of Texas'
Great Field

Observe Their
Location

The right kind of an investment may mean independence for life
THE RIGHT KIND OF AN INVESTMENT IS IN THE

COMANCHE COUNTY OIL Co.

NO PROMOTION STOCK
NO OVER-CAPITALIZATION

NO SALARIED OFFICERS
HIGH CLASS MEN TRUSTEES

FOR FURTHER INFORMATION CONCERNING THIS COMPANY AND ITS WONDEREUL HOLDINGS WRITE

A. W. FISHER

Of The DAVIE REALTY CO.

126 N. Central Ave., PHOENIX, ARIZ.

"IT PAYS TO SEE US"

Mr. A. W. Fisher, 1919
126 N. Central Ave., Phoenix, Arizona.
Dear Sir:
Please give me full information concerning the Comanche County Oil Company, its holdings, its capitalization, its management and its wonderful future to which my attention has been called.
Name _____
Address _____