

# RAYMOND'S RECORD SENT TO ST. LOUIS

Requisition and Transcript of Trial—Convicted of Libeling Officials.

Armed with requisition papers and a transcript of the court's record, Central Office Detective Frank Baur has gone to St. Louis to be present at the hearing of Albert M. Raymond, convicted of libel, and for whom the Washington detective force has been searching for nearly four years.

Indictments were returned by the grand jury against Raymond for libeling Major Sylvester, Superintendent of Police; Building Inspector Ashford, James M. Wood, and Charles R. Lusk. Letters of a libelous nature were written to the District Commissioners, in which he charged corruption of various departments.

Convicted in the Criminal Court, he was sentenced to five years in the penitentiary. An appeal was noted, and pending a hearing he was released in \$1,000 bail. The Court of Appeals affirmed the findings of the lower court, and Raymond disappeared.

**A SLIGHT DIFFERENCE.**

First Roommate—What's that you got, a billet d'oux?

Second Ditto—Not; a bill over due—Exchange.

Leave Business Cares Behind when starting on your outing; have Union Trust Co., 15th and H sts., act as your general agent. All business duties faithfully discharged. Reasonable rates. —Adv.

# THREE THROWN OUT AS CAR HITS BUGGY

Driver Attempts to Cross in Front of a Rockville-Bound Car.

Henry Shughrue, thirty-four years of age, of Bethesda, Md., Mrs. Mary Jett, and her son, Walter Jett, had a narrow escape from serious injury in a car-riage accident early this morning. The trio were returning to Bethesda about 1 o'clock, after spending the evening with friends in Washington, when the accident occurred.

Shughrue attempted to cross in front of a north bound Rockville car on Wisconsin avenue near the District line. The car struck the vehicle with terrific force, the crash coming almost before the motorist had an opportunity to apply his brakes or reverse the current.

All of the occupants were thrown to the ground, and the buggy demolished. Shughrue, the most seriously injured, was brought to Washington on a car and removed to the Georgetown University Hospital, where the doctors said he was suffering from bruises about the head and body. Mrs. Jett and her son were only slightly hurt.

The car which struck the buggy was the last one leaving Washington for Rockville last night, and was filled with passengers. Many persons were thrown from the seats when the crash came, and there was considerable excitement over the accident.

**Summer Tourist Rates Via Baltimore and Ohio on sale daily to Jersey Shore resorts, Adirondack Mountains, Northern New York, New England, Canadian Provinces, Nova Scotia, Allegheny Mountains resorts, also to many Western points. If contemplating a rail or water tour for pleasure or recreation, consult agents at 1417 G street or 619 Penna. ave. They will be helpful to you.—Adv.**

# STEEL TRAP CATCHES FARMER IN ITS JAWS

Man Falls, Breaking Arm, and Wife Finds Him at Night Half Conscious.

GREENWOOD, Del., July 10.—Caught in a steel trap, Hiram Conoway, a farmer, near here, was held for a half day until rescued by his wife. Conoway, a young man, came here a few months ago, moving on a small farm near the town, where he hoped to make his future home.

After dinner the young man shouldered his ax and grubbing hoe and started, presumably for a small patch of pines near the house, but afterward changed his mind and went to a swampy part of the farm to clear off the timber there. He worked for a short time when, in moving around, he was suddenly caught around the leg by jaws of steel.

With a jerk he attempted to escape, but fell to the ground, breaking his right arm. A quick examination showed him that he had become fastened in an old rusty steel trap, which had been hidden beneath the leaves in the woods. He tried to pry himself loose, but with the broken arm he could do nothing, and every movement only brought him more pain.

Suffering from his broken arm and the teeth of the trap, he yelled until he was hoarse, and half conscious he lay there until after dark, when his frightened wife finally found him. She dragged and carried him nearly a mile to their home. The man will recover, unless blood poison comes from the rusty teeth of the trap.

**\$1.10, Columbus, Ohio, and Return, Baltimore & Ohio, July 10 to 13, valid for return until July 24. Consult agents. —Adv.**

# "ANANIAS" HOBSON JOINS BROTHERHOOD

President Nominates and Elects Him Because of Jap Speech. Misses Shorter Word Degree.

OYSTER BAY, July 10.—Richmond Pearson Hobson to the Ananias Club—elected. Nominator, Theodore Roosevelt.

That's where the "hero of the Merrimac" is today. When the President heard the Southerner's statement made to the Denver convention that he had said, "There exists the greatest probability of war with Japan," he promptly denied it, omitting to use, however, the "shorter and uglier" word. For him Secretary Loeb said:

"The Congressman must have been misquoted. The President not only never made such a remark, but never made any remark even remotely resembling it. All that the President has ever said is that if there was a sufficient navy there would never be any possibility of this country getting into a foreign war."

# HATTERAS STORM MOVING NORTHWARD

A special storm warning issued today by the Weather Bureau reads:

"Disturbance near Hatteras will move northward, and cause fresh and increasing northeasterly winds off the middle Atlantic coast during the next twenty-four hours."

**\$1.25 to Baltimore and Return. Every day via "The Electric Line." Tickets at 14th and New York ave. n.w. Twilight excursions \$1.00 round trip, after 4 p. m.—Adv.**

Store closes at 6 p. m. tomorrow

Close 6 p. m. tomorrow

S. KANN & SONS

8th ST. & PA. AVE.

"THE BUSY CORNER"

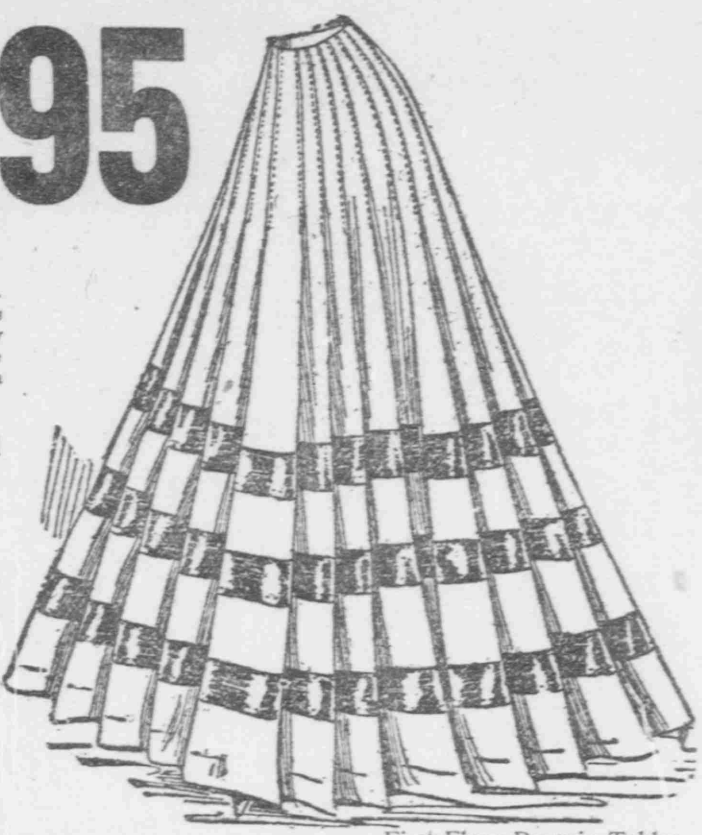
Close 6 p. m. tomorrow

# Sale of 600 skirts

Worth \$7.50, \$10, and \$12.50, all at one price

Choice \$4.95

- First Floor—Bargain Tables.
- "Sensational" is a mild term to use here. We've never been so elated over a purchase as over this one. The variety is extraordinary in styles and materials. The majority of the skirts are worth more than \$10.00. Here are a few of the good things.
- Black Altman voile skirts, unlined and trimmed with folds
  - Black taffeta skirts, in pleated and gored styles
  - Rajah silk skirts, plain colors, pleated and with broad taffeta folds
  - Sicilian skirts in black, navy, and cream, all circular-gored styles
  - Chiffon panama skirts in the favorite pleated and flared effects
  - Fancy Worsteds skirts in the most favored styles and effects
  - French serge skirts in cream only, in the very latest styles



# The catchiest sheet music of the day at 5c and 15c

- All the big hits are included. Have any played on the piano before purchasing if desired. We've expert pianists.
- | Vocal, 5c                        | Instrumental, 5c                     |
|----------------------------------|--------------------------------------|
| Ave Maria.                       | Gen. Grant's March.                  |
| Anchored.                        | Flower Song.                         |
| Palms.                           | Il Trovatore.                        |
| Old Black Joe.                   | Blue Danube.                         |
| My Old Kentucky Home.            | Cavalleria Rusticana.                |
| Love's Old Sweet Song.           | William Tell.                        |
|                                  | Storm.                               |
| Vocal, 15c                       | Instrumental, 15c                    |
| Are You Sincere.                 | On the Banks of the Old Mill Stream. |
| Mary My Heather Queen.           | I Will Try.                          |
| Afraid to Come Home in the Dark. | The Road to Yesterday.               |
| Sweetheart Days.                 | Smarty.                              |
| Dreaming.                        | Hang Out the Front Door Key.         |
| Summertime.                      | There Never Was a Girl Like You.     |
| Little Old Red School House.     |                                      |
|                                  | Le Kie King-ew.                      |
|                                  | Marching—waltz.                      |
|                                  | Rainbow.                             |
|                                  | Sweet Violets.                       |
|                                  | Summertime—waltz.                    |
|                                  | Carbolic Acid—rag.                   |
|                                  | Ivanhoe.                             |
|                                  | Southern Beauties.                   |
|                                  | Bombay.                              |
|                                  | Festive Flea.                        |
|                                  | Barry Tucker.                        |
|                                  | Yankee Doodle.                       |
|                                  | Musette.                             |
|                                  | Hide and Seek.                       |
|                                  | Songs of the Nation—medley.          |
|                                  | Fourth floor—Sheet Music Section.    |

# Lawn furniture Deeply cut in price

Three items specially priced for tomorrow that are shining examples of how we undersell:

No. 3

(Cut 1) THIS BENTWOOD LAWN SETTEE, 4-ft. long, painted green and arm rests bolted to settee; choice of one shown or Kalama—\$2.89

(Cut 2) THIS FERRIS LAWN SWING, built for 2 passengers; 7-ft. high, natural finish, uprights painted. Regularly \$3.49. For tomorrow \$2.98 only

(Cut 3) THIS ROCKING CHAIR with spindle back and double woven rattan seat; natural finish or painted green. Can be used as porch or sewing rocker. Usually \$1.00. For tomorrow only—89c

Fourth Floor—Lawn Furniture.

No. 2

(Cut 1) THIS BENTWOOD LAWN SETTEE, 4-ft. long, painted green and arm rests bolted to settee; choice of one shown or Kalama—\$2.89

(Cut 2) THIS FERRIS LAWN SWING, built for 2 passengers; 7-ft. high, natural finish, uprights painted. Regularly \$3.49. For tomorrow \$2.98 only

(Cut 3) THIS ROCKING CHAIR with spindle back and double woven rattan seat; natural finish or painted green. Can be used as porch or sewing rocker. Usually \$1.00. For tomorrow only—89c

Fourth Floor—Lawn Furniture.

No. 1

(Cut 1) THIS BENTWOOD LAWN SETTEE, 4-ft. long, painted green and arm rests bolted to settee; choice of one shown or Kalama—\$2.89

(Cut 2) THIS FERRIS LAWN SWING, built for 2 passengers; 7-ft. high, natural finish, uprights painted. Regularly \$3.49. For tomorrow \$2.98 only

(Cut 3) THIS ROCKING CHAIR with spindle back and double woven rattan seat; natural finish or painted green. Can be used as porch or sewing rocker. Usually \$1.00. For tomorrow only—89c

Fourth Floor—Lawn Furniture.

# Freezers, gas stoves, refrigerators, lawn mowers,

and other summer requisites in a Friday and Saturday sale at deeply cut prices

10c Fine, Plain, Thin-blown Iced Tea or Milk Glasses in bell shape and 12-oz. size. Sale price..... 5c

4c Fine Plain, Thin-blown Water Tumblers in 3-oz. size; clear and well finished. 2c each. Sale price..... 1c

Best Quality Crystal Glass Jelly Tumblers in 1-3-pint size, and fitted with tight tin covers. Sale price..... 1c

\$1.49 Lawn Hose Set, comprising 25 ft. 4-ply wire-wrapped high-pressure lawn hose, with couplings and nozzle complete. Sale \$2.69

Best Quality Patent End Covered Gas Store Tubing, in all standard lengths. Sale price, per foot..... 3c

25c Wash Boilers, made of extra heavy charcoal tin, highly polished and with copper bottom and 2 1/2-inch copper rim. No 7 size. Sale price..... \$1.19

Mason's Best Quality Machine-made Fruit Jars, with porcelain caps and complete with rubber rings—Pints. Sale price..... 6c

Quarts. Sale price..... 7c

1 1/2-gallons. Sale price..... 9c

12 Tin Floor Sieves in quart size; the revolving kind. Sale price..... 7c

DEMONSTRATION OF THE SNOW FLAKE ICE CREAM FREEZER. 2-qt., \$1.50; 4-qt., \$1.80; 6-qt., \$2.50. Requires less ice, less time and less labor than the old-style wooden pall freezers; made entirely of metal and will last longer, and is easier cleaned than the old style.

SEE DEMONSTRATION ON THIRD FLOOR—HOUSEFURNISHINGS DEPT.

Gem Ice Cream Freezer in 3-quart size; double motion; easy to handle and complete with accessories. Sale price..... \$1.79

8c Nickel-plated Alarm Clocks, fitted with standard movement and warranted for one year. 59c

8c Bread Boxes of heavy tin, neatly japanned and stenciled; size 9x11. Sale price..... 34c

8c Wash Tubs of extra grade triple-coated galv. iron with strong bottoms and riveted handles; largest size, 18x24. Sale price..... 69c

30c Granite Iron Seamless Berlin Saucepans, with long handles and cover, 4-quart pint size. Sale price..... 39c

\$1.98 Plain White Porcelain Toilet Sets, comprising six pieces in pretty shape. Wash pitcher, bowl, covered chamber, soap slab, and 12.9 mug. Sale price..... 98c

\$1.50 Keystone Meat or Food Choppers, with four different knives, in family size. Warranted to give satisfaction. Sale price..... 17c

2c Chamber Pails, of heavy tin, neatly painted inside and out; 10-qt. size; complete with cover. Sale price..... 17c

KANN'S SPECIAL LAWN MOWERS are constructed entirely of selected high-grade stock, and are warranted to give satisfaction; fitted with specially tempered steel knives, sharpened ready for use; 12-inch size. Sale \$2.09

The Steam Cookers of extra grade polished tin, with rivet-proof metal bottoms; 4-compartment size. Sale 59c

\$11.98 Radium Refrigerator, with outside case of genuine ash in oak finish, brass trimmings, all parts removable and galvanized lined; warranted in every detail; 100 lbs. capacity. Sale \$13.98

# Six cakes soap, 21c

Limit of one order to a customer, but choice of the following kinds—Cincinnati Oilex, Star, Swift's Pride, Brookes' Crystal, Ivory, Wool, Pearlina, Gold Dust.

1 2 Price

We're Making a Clean Sweep

Thousands of People Have Learned to Wait for the

Bieber-Kaufman Semi-Annual Half-Price Sale

Now it's here, and our men are knowing like heavers to help patrons make their selections. Everybody knows that "Bieber-Kaufman" stands for "QUALITY"—first, last, and all the time, hence the tremendous popularity of Bieber-Kaufman Clothes and confidence in Bieber-Kaufman methods. Folks have learned that "Half-Price" means HALF-PRICE without reservation, and every garment is "CORRECT."

Early comers are getting the cream of the stock. It's your move!

\$30.00 Men's and Young Men's Suits.....	\$15.00
\$25.00 Men's and Young Men's Suits.....	\$12.50
\$22.50 Men's and Young Men's Suits.....	\$11.25
\$20.00 Men's and Young Men's Suits.....	\$10.00
\$17.50 Men's and Young Men's Suits.....	\$8.75
\$15.00 Men's and Young Men's Suits.....	\$7.50
\$12.50 Men's and Young Men's Suits.....	\$6.25
\$10.00 Men's and Young Men's Suits.....	\$5.00

Blacks and Blues Not Included—No Goods Charged—Alterations Extra.

THE BIEBER-KAUFMAN CO.

Down by the Navy Yard

901-909 Eighth St. S. E.

"It Pays to Deal Where Satisfaction Is Guaranteed"

MAYER & CO.

409 & 417 SEVENTH ST.

Men's and Women's Clothing At Great Price Reductions

Prices in these departments have been greatly reduced to make room for the new stocks soon to arrive. Even at these very small prices we invite you to open an account.

No Extra Charges for Credit

Guaranteed Blue Serge Suits Worth \$12.50 to \$15 \$9.75

Strictly all-wool Blue Serge Suits, colors and seams guaranteed; in choice of single and double-breasted styles. See our window display of these fine suits.

Any Straw Hat In the Store for..... 89c

We offer the balance of our Straw Hats at 89c, to insure a speedy sale. Make your selection early.

Youths' \$15.00 Suits..... \$8.75

Young Men's Fashionably Tailored Single and Double-breasted Suits, in fancy mixtures; very well models, at a fraction of their worth.

Wash Skirts and Waists

\$1.00 Persian Lawn Waists..... 49c

White Persian Lawn Waists, trimmed with embroidered insertion, tucked front and back, short sleeves, tucked collars and cuffs, and trimmed with Valenciennes edging.

\$3.00 and \$3.50 Jap Silk Waists..... \$1.69

Fine White Jap Silk Waists, have pointed yokes of embroidered silk flowers, trimmed with Valenciennes lace insertion, tucked front and back, short sleeves, and lace collar and cuffs.

\$4.00 and \$5.00 Wash Skirts..... \$1.89

White Linen and Poplin Wash Skirts, gored, full side pleated bottom, and trimmed in small buttons.

Open Saturdays Until 9 P. M.

Strawberry Ice Cream

Fresh Fruit

\$1.25 a Gallon

Delivered Ice.

The Conover Ice Cream Co.

Telephone North 7211

Office Furniture

Everything you need for your office can be purchased here at half price.

Four Sections \$9.00

Bookcases.....

(Top and Base Oak.)

Four Drawer \$9.00

Vertical File.

1320 G St. N. W.

Burn Coke

—the best fuel for Summer Cooking. We supply Coke at these little prices:

25 Bushels Large Coke, delivered.....	\$3.50
40 Bushels Large Coke, delivered.....	\$3.75
50 Bushels Large Coke, delivered.....	\$3.90
60 Bushels Large Coke, delivered.....	\$4.05
25 Bushels Crushed Coke, delivered.....	\$3.50
40 Bushels Crushed Coke, delivered.....	\$3.75
50 Bushels Crushed Coke, delivered.....	\$3.90
60 Bushels Crushed Coke, delivered.....	\$4.05

Washington Gaslight Co., 413 10th St. N. W.

Come Down Any Day Except Monday at 8:45 A. M. or Saturday at 5:45 P. M. on the Palace Steamer St. Johns to

COLONIAL BEACH, VA.

WASHINGTON'S ATLANTIC CITY

And Buy a Cottage or Business Site

On the Famous "Classic Shore" or "Brady Tract" in the Northwest Section of the Corporation of Colonial Beach.

The Palace Steamer St. Johns Leaves at the Foot of Seventh Street S. W.

USE A TENT UNTIL YOU CAN BUILD

Splendid hotel accommodations for all. Wagonette will meet you at the boat Sunday to show you through the property.

Beautiful lots for sale immediately on the shore front on easy terms. This is a splendid opportunity to secure a summer house for yourself and children.

High and healthy. Splendid view of Potomac river and surrounding country. Fire and police protection. Electric lights. Long-distance telephone. Excellent water. Boardwalk and wide streets.

This is positively the best land for sale today in the township of Colonial Beach. Lots will double in value within a year.

Salt water bathing, crabbing and fishing.

Buy a lot and build yourself a bungalow. Lots 25x100 feet and up in depth.

SEND FOR PLAT AND PRICE LIST

Prices \$25 and Up

Terms as Low as \$1 Cash and \$1 Per Month and Up.

5 Per Cent Discount for Cash.

Colonial Real Estate Company

1201 G Street N. W., Washington, D. C.

BRANCH OFFICE ON THE PROPERTY AT COLONIAL BEACH