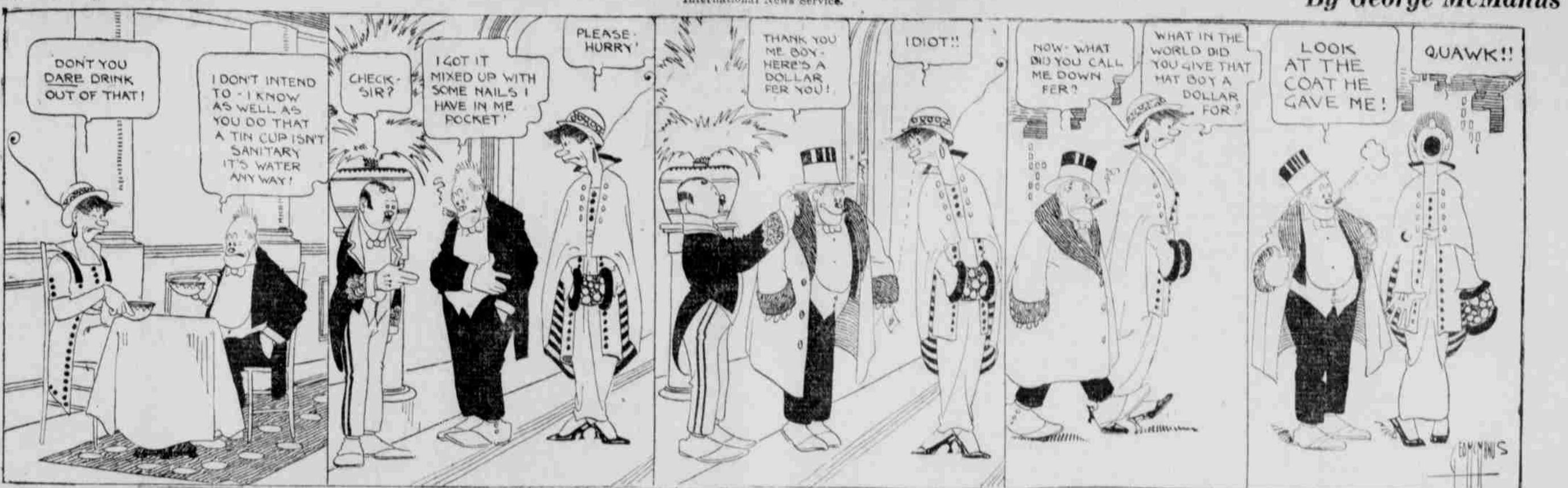


Bringing Up Father



STOCK EXCHANGE TRADING WITHIN NARROW LIMITS

Extreme Apathy Characterizes Sessions and Dealings Are Light; Bear Influences Appear to Have Subsided.

(BY MORNING JOURNAL SPECIAL LEASER WIRE) New York, March 15.—Extreme apathy characterized today's market session, dealings being very light and the price movement unusually narrow.

Record merchandise exports for the past week, the largest in the history of this port, surface betterment in the general European situation and a fall in Mexican affairs were helpful to the extent of checking bearish operations.

There were further inflexible indications of a pause in western business. Banks in the west are unusually strong in their reserve holdings and no change from present easy rates is expected before the end of the first quarter of the year.

Table of stock exchange data with columns for stock names (e.g., American Copper, Standard Oil) and prices.

Chicago, March 15.—Foreign buying that was associated with wheat... The market closed nervous, 2 1/2 to 3 1/2 above Saturday night.

her, especially July. The effect was to lessen somewhat the gap in value of July as compared with May.

Throughout the day, the bulls in wheat were counting on a decrease of about 3,000,000 bushels in the domestic visible supply total, as against an increase a year ago.

Another gold engagement of \$2,500,000 from Canada was reported and more of the metal is expected from the same source in the course of the week.

Record merchandise exports for the past week, the largest in the history of this port, surface betterment in the general European situation...

There were further inflexible indications of a pause in western business. Banks in the west are unusually strong...

Chicago, March 15.—Foreign buying that was associated with wheat... The market closed nervous, 2 1/2 to 3 1/2 above Saturday night.

Chicago, March 15.—Foreign buying that was associated with wheat... The market closed nervous, 2 1/2 to 3 1/2 above Saturday night.

Chicago, March 15.—Foreign buying that was associated with wheat... The market closed nervous, 2 1/2 to 3 1/2 above Saturday night.

Journal Classified Columns

Wanted Through the Journal Classified Columns

A large section containing various classified advertisements such as 'Bargains Worth While', 'Porterfield Co.', 'A. Fleischer', 'Real Estate', 'Machinery', 'Professional Cards', and 'Silver City Mogollon'.