

DECREASE IN BUILDING.

Reports From Entire Country Show Building Operations Well Off in May.

Building in seventy-five principal cities for May shows a decrease of 14 per cent. Permits were taken out in May, according to official reports to Construction News, for 11,774 buildings, valued at \$20,000,000, 703 buildings, involving a total cost of \$30,722,782 for the corresponding month of a year ago, a decrease of 1,426 and \$11,735,826, or 14 per cent.

Building has been upon a scale of much activity in this country during the past ten or twelve years, in order to care for the natural growth in population, the marvelous influx of people from other countries as well as the tremendous expansion of industrial enterprises, and it is to be expected that it should now undergo a moderate checking up, adjusting itself to the give and take of commerce, prior to going ahead upon an era of greater development. There were losses in forty-two cities and gains in thirty-two. The reports reveal the fact that in the cities having the greatest losses building has been most active in the past year. These cities are the backbone of the industries of the country, and a let-up at this time should cause no serious apprehension, as the falling off is only temporary.

The Deadly Automobile.
The Hartford Times says: Chicago has discovered that it has killed more automobiles in the same month of 1912 as it did during the same month of 1913. Chicago hopes to do something about it. Representative Thomas discovered—and told our Legislature—that the Connecticut had 109 deaths from death record. But the Legislature failed to take any action. Justification for adding stringency to the existing automobile laws.

Steamboats

Foreign and Travel Department,
Richmond Trust and Savings Co.

STEAMSHIP PASSAGE TICKETS

by ALL LINES are issued at OUR OFFICE, where the plans of ALL STEAMERS may be obtained and choice berth secured.

"ASK MR. BOWMAN."
Mr. Foreign and Travel Dept.,
RICHMOND TRUST AND SAVINGS CO.,
1109 E. Main St., Richmond, Va.
Capital, One Million Dollars.

MERCHANTS AND MINERS TRANS. CO.

Summer Trips "By Sea."

NORFOLK TO BOSTON.
Steamers—Norfolk to Boston daily, except Thursday; to Providence, Monday, Thursday and Saturday; to New York, Tuesday, Friday and Sunday. Tickets on sale to principal ports.
Apply C. & O. Ry. N. & W. Ry., Richmond Trust and Savings Co., 1109 E. Main St., Richmond, Va. and Richmond Transfer Company, No. 79 E. Main Street.

ALL TRAVEL ARRANGEMENTS

OVER ONE COUNTRY,

AMERICAN OR EUROPEAN.

Richmond Transfer Co.,

Time and Trouble Savers,

809 East Main Street.

OLD DOMINION LINE.

Lv. Richmond foot of Ash St. daily 7:00 P. M.

Leave Newport News 7:30 A. M. 8:30 A. M.

Arrive Norfolk 10:30 A. M. 11:30 A. M.

Connects with main line steamers leaving Norfolk for New York daily, except Sunday.

For New York, P. M. and C. O. Ry. at 4 P. M.

Wireless telegraph. Send for booklet.

Apply C. & O. Ry. N. & W. Ry., Richmond Trust and Savings Co., 1109 E. Main St., Richmond, Va.

ALL TRAVEL ARRANGEMENTS

OVER ONE COUNTRY,

AMERICAN OR EUROPEAN.

Richmond Transfer Co.,

Time and Trouble Savers,

809 East Main Street.

OLD DOMINION LINE.

Lv. Richmond foot of Ash St. daily 7:00 P. M.

Leave Newport News 7:30 A. M. 8:30 A. M.

Arrive Norfolk 10:30 A. M. 11:30 A. M.

Connects with main line steamers leaving Norfolk for New York daily, except Sunday.

For New York, P. M. and C. O. Ry. at 4 P. M.

Wireless telegraph. Send for booklet.

Apply C. & O. Ry. N. & W. Ry., Richmond Trust and Savings Co., 1109 E. Main St., Richmond, Va.

ALL TRAVEL ARRANGEMENTS

OVER ONE COUNTRY,

AMERICAN OR EUROPEAN.

Richmond Transfer Co.,

Time and Trouble Savers,

809 East Main Street.

OLD DOMINION LINE.

Lv. Richmond foot of Ash St. daily 7:00 P. M.

Leave Newport News 7:30 A. M. 8:30 A. M.

Arrive Norfolk 10:30 A. M. 11:30 A. M.

Connects with main line steamers leaving Norfolk for New York daily, except Sunday.

For New York, P. M. and C. O. Ry. at 4 P. M.

Wireless telegraph. Send for booklet.

Apply C. & O. Ry. N. & W. Ry., Richmond Trust and Savings Co., 1109 E. Main St., Richmond, Va.

ALL TRAVEL ARRANGEMENTS

OVER ONE COUNTRY,

AMERICAN OR EUROPEAN.

Richmond Transfer Co.,

Time and Trouble Savers,

809 East Main Street.

OLD DOMINION LINE.

Lv. Richmond foot of Ash St. daily 7:00 P. M.

Leave Newport News 7:30 A. M. 8:30 A. M.

Arrive Norfolk 10:30 A. M. 11:30 A. M.

Connects with main line steamers leaving Norfolk for New York daily, except Sunday.

For New York, P. M. and C. O. Ry. at 4 P. M.

Wireless telegraph. Send for booklet.

Apply C. & O. Ry. N. & W. Ry., Richmond Trust and Savings Co., 1109 E. Main St., Richmond, Va.

ALL TRAVEL ARRANGEMENTS

OVER ONE COUNTRY,

AMERICAN OR EUROPEAN.

Richmond Transfer Co.,

Time and Trouble Savers,

809 East Main Street.

OLD DOMINION LINE.

Lv. Richmond foot of Ash St. daily 7:00 P. M.

Leave Newport News 7:30 A. M. 8:30 A. M.

Arrive Norfolk 10:30 A. M. 11:30 A. M.

Connects with main line steamers leaving Norfolk for New York daily, except Sunday.

For New York, P. M. and C. O. Ry. at 4 P. M.

Wireless telegraph. Send for booklet.

Apply C. & O. Ry. N. & W. Ry., Richmond Trust and Savings Co., 1109 E. Main St., Richmond, Va.

ALL TRAVEL ARRANGEMENTS

OVER ONE COUNTRY,

AMERICAN OR EUROPEAN.

Richmond Transfer Co.,

Time and Trouble Savers,

809 East Main Street.

OLD DOMINION LINE.

Lv. Richmond foot of Ash St. daily 7:00 P. M.

Leave Newport News 7:30 A. M. 8:30 A. M.

Arrive Norfolk 10:30 A. M. 11:30 A. M.

Connects with main line steamers leaving Norfolk for New York daily, except Sunday.

For New York, P. M. and C. O. Ry. at 4 P. M.

Wireless telegraph. Send for booklet.

Apply C. & O. Ry. N. & W. Ry., Richmond Trust and Savings Co., 1109 E. Main St., Richmond, Va.

ALL TRAVEL ARRANGEMENTS

OVER ONE COUNTRY,

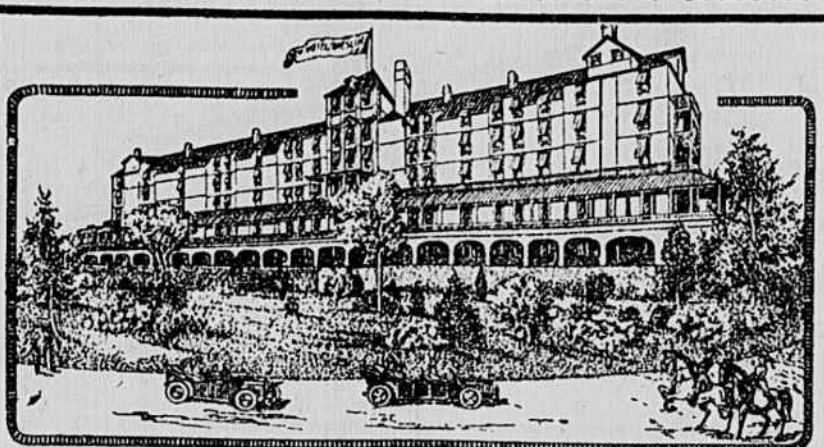
AMERICAN OR EUROPEAN.

Richmond Transfer Co.,

Time and Trouble Savers,

809 East Main Street.

Hotels



NEW HOTEL BRESLIN

On Lake Hopatcong, Mt. Arlington, N. J.
NOW OPEN UNDER ENTIRELY NEW MANAGEMENT, CATERING TO DISCRIMINATING PATRONAGE.

CLIMATE. The ideal hotel at which to enjoy the Summer or Week-end. Dry, invigorating Mountain Air. Elevation, 1,400 feet. No mosquitoes, no malaria.

LOCATION. New Hotel Breslin is delightfully located on an eminence, overlooking beautiful Lake Hopatcong, 10 miles long, 2 miles wide, surrounded by 12 acres, lawns, shrubbery, flowers and fountains.

APPOINTMENTS. The Hotel has recently been remodeled and refurnished; now contains every modern convenience: steam heat, log fires, electric lights, elevators, spacious verandas—the plumbing is new and sanitary. There are 300 elegantly furnished guest rooms, each with hot and cold running water; 100 suites with baths; banquet hall, children's playroom; Western Union Telegraph Office; new cafe and grill.

DIVERSIONS. Every outdoor and indoor diversion is provided—motor boating, canoeing, fishing, bathing, golf, tennis, pool, bowling, baseball, dancing, horseback riding, picturesque walks and drives, orchestra of soloists.

ADVANTAGES. Only 1 hour from New York via D. L. & W. R. R., Broad Street Station. Auto coaches meet trains.

AUTOMOBILISTS' ATTENTION. Motorists will receive special attention. The hotel has a car service—fireproof garage and repair shop. The roads leading to New Hotel Breslin are excellent—scenery magnificent.

The comfort and luxury of New Hotel Breslin, its cuisine and service, combined with the most moderate charges, place it in the front rank of all Mountain Hotels. Literature and Auto Maps mailed. Inspection solicited.

G. FRANK COPEL.

MURPHY'S HOTEL

(Incorporated)

EUROPEAN PLAN.

RICHMOND, VA.

JOHN MURPHY, Manager.

A strictly modern house, fronting on three streets, in the heart of beautiful Richmond. Rooms fronting every way.

Office, Grace Street Annex.

Office, Grace Street Annex.

Office, Grace Street Annex.

Office, Grace Street Annex.

Office, Grace Street Annex.

Office, Grace Street Annex.

Office, Grace Street Annex.

Office, Grace Street Annex.

Office, Grace Street Annex.

Office, Grace Street Annex.

Office, Grace Street Annex.

Office, Grace Street Annex.

Office, Grace Street Annex.

Office, Grace Street Annex.

Office, Grace Street Annex.

Office, Grace Street Annex.

Office, Grace Street Annex.

Office, Grace Street Annex.

Office, Grace Street Annex.

Office, Grace Street Annex.

Office, Grace Street Annex.

Office, Grace Street Annex.

Office, Grace Street Annex.

Office, Grace Street Annex.

Office, Grace Street Annex.

Office, Grace Street Annex.

Office, Grace Street Annex.

Office, Grace Street Annex.

Office, Grace Street Annex.

Office, Grace Street Annex.

Office, Grace Street Annex.

Office, Grace Street Annex.

Office, Grace Street Annex.

Office, Grace Street Annex.

Office, Grace Street Annex.

Office, Grace Street Annex.

Office, Grace Street Annex.

Office, Grace Street Annex.

Office, Grace Street Annex.

Office, Grace Street Annex.

Office, Grace Street Annex.

Office, Grace Street Annex.

Office, Grace Street Annex.

Office, Grace Street Annex.

Office, Grace Street Annex.

Office, Grace Street Annex.

Office, Grace Street Annex.

Office, Grace Street Annex.

Office, Grace Street Annex.

Office, Grace Street Annex.

Office, Grace Street Annex.

Office, Grace Street Annex.

Office, Grace Street Annex.

Office, Grace Street Annex.

Office, Grace Street Annex.

Office, Grace Street Annex.

Office, Grace Street Annex.

Office, Grace Street Annex.

Office, Grace Street Annex.

Office, Grace Street Annex.

Office, Grace Street Annex.

Office, Grace Street Annex.

Office, Grace Street Annex.

Office, Grace Street Annex.

Office, Grace Street Annex.

Office, Grace Street Annex.

Office, Grace Street Annex.

Office, Grace Street Annex.

Office, Grace Street Annex.

Office, Grace Street Annex.

Office, Grace Street Annex.

Office, Grace Street Annex.

Office, Grace Street Annex.

Office, Grace Street Annex.

Office, Grace Street Annex.

Office, Grace Street Annex.

Office, Grace Street Annex.

Office, Grace Street Annex.

Office, Grace Street Annex.

Office, Grace Street Annex.

Office, Grace Street Annex.

Office, Grace Street Annex.

Office, Grace Street Annex.

Office, Grace Street Annex.

Office, Grace Street Annex.

Office, Grace Street Annex.

Office, Grace Street Annex.

Office, Grace Street Annex.

Office, Grace Street Annex.

Office, Grace Street Annex.

TURKISH AND ROMAN BATHS.

Table d'Hotel Dinner Saturday and Sunday evenings, 6 to 9 o'clock. \$1.50 each.

Table d'Hotel Dinner Saturday and Sunday evenings, 6 to 9 o'clock. \$1.50 each.

Table d'Hotel Dinner Saturday and Sunday evenings, 6 to 9 o'clock. \$1.50 each.

Table d'Hotel Dinner Saturday and Sunday evenings, 6 to 9 o'clock. \$1.50 each.

Table d'Hotel Dinner Saturday and Sunday evenings, 6 to 9 o'clock. \$1.50 each.

Table d'Hotel Dinner Saturday and Sunday evenings, 6 to 9 o'clock. \$1.50 each.

Table d'Hotel Dinner Saturday and Sunday evenings, 6 to 9 o'clock. \$1.50 each.

Table d'Hotel Dinner Saturday and Sunday evenings, 6 to 9 o'clock. \$1.50 each.

Table d'Hotel Dinner Saturday and Sunday evenings, 6 to 9 o'clock. \$1.50 each.

Table d'Hotel Dinner Saturday and Sunday evenings, 6 to 9 o'clock. \$1.50 each.

Table d'Hotel Dinner Saturday and Sunday evenings, 6 to 9 o'clock. \$1.50 each.

Table d'Hotel Dinner Saturday and Sunday evenings, 6 to 9 o'clock. \$1.50 each.

Table d'Hotel Dinner Saturday and Sunday evenings, 6 to 9 o'clock. \$1.50 each.

Table d'Hotel Dinner Saturday and Sunday evenings, 6 to 9 o'clock. \$1.50 each.

Table d'Hotel Dinner Saturday and Sunday evenings, 6 to 9 o'clock. \$1.50 each.

Table d'Hotel Dinner Saturday and Sunday evenings, 6 to 9 o'clock. \$1.50 each.

Table d'Hotel Dinner Saturday and Sunday evenings, 6 to 9 o'clock. \$1.50 each.

Table d'Hotel Dinner Saturday and Sunday evenings, 6 to 9 o'clock. \$1.50 each.

Table d'Hotel Dinner Saturday and Sunday evenings, 6 to 9 o'clock. \$1.50 each.

Table d'Hotel Dinner Saturday and Sunday evenings, 6 to 9 o'clock. \$1.50 each.

Table d'Hotel Dinner Saturday and Sunday evenings, 6 to 9 o'clock. \$1.50 each.

Table d'Hotel Dinner Saturday and Sunday evenings, 6 to 9 o'clock. \$1.50 each.

Table d'Hotel Dinner Saturday and Sunday evenings, 6 to 9 o'clock. \$1.50 each.

Table d'Hotel Dinner Saturday and Sunday evenings, 6 to 9 o'clock. \$1.50 each.

Table d'Hotel Dinner Saturday and Sunday evenings, 6 to 9 o'clock. \$1.50 each.

Table d'Hotel Dinner Saturday and Sunday evenings, 6 to 9 o'clock. \$1.50 each.

Table d'Hotel Dinner Saturday and Sunday evenings, 6 to 9 o'clock. \$1.50 each.

Table d'Hotel Dinner Saturday and Sunday evenings, 6 to 9 o'clock. \$1.50 each.

Table d'Hotel Dinner Saturday and Sunday evenings, 6 to 9 o'clock. \$1.50 each.

Table d'Hotel Dinner Saturday and Sunday evenings, 6 to 9 o'clock. \$1.50 each.

Table d'Hotel Dinner Saturday and Sunday evenings, 6 to 9 o'clock. \$1.50 each.

Table d'Hotel Dinner Saturday and Sunday evenings, 6 to 9 o'clock. \$1.50 each.