

WE HEARD ALL OVER SOUTHWEST BY RADIO MEN

Midland Refining Co. and Tulsa World Have Modern Plant

IS HEARD "ALL OVER" Letters and Replies From Canada Received by World Radio Editor

OUTFIT RECENTLY REBUILT Quarters Used by WEH Are Among Best in Tulsa; in Unity Building

After several weeks of testing and official broadcasting, the Midland Refining company-Tulsa World broadcasting station has at last been officially opened for broadcast service.

This station was built entirely by R. D. Lemert, who is employed by the Midland Refining company to build the two stations for communication between Eldorado, Kan., and Tulsa.

The transmitter used by WEH is a composite set, built on a bakelite panel, 43 by 36, mounted in a cabinet beside the receiving set.

The antenna system used at WEH is a very elaborate arrangement, using a counterpoise, which is stretched under the aerial.

The antenna system used at WEH is a very elaborate arrangement, using a counterpoise, which is stretched under the aerial.



R. D. Lemert.

Each of the aeriels is connected to a large lightning switch, which is grounded when the set is not in operation so as to protect the apparatus from lightning.

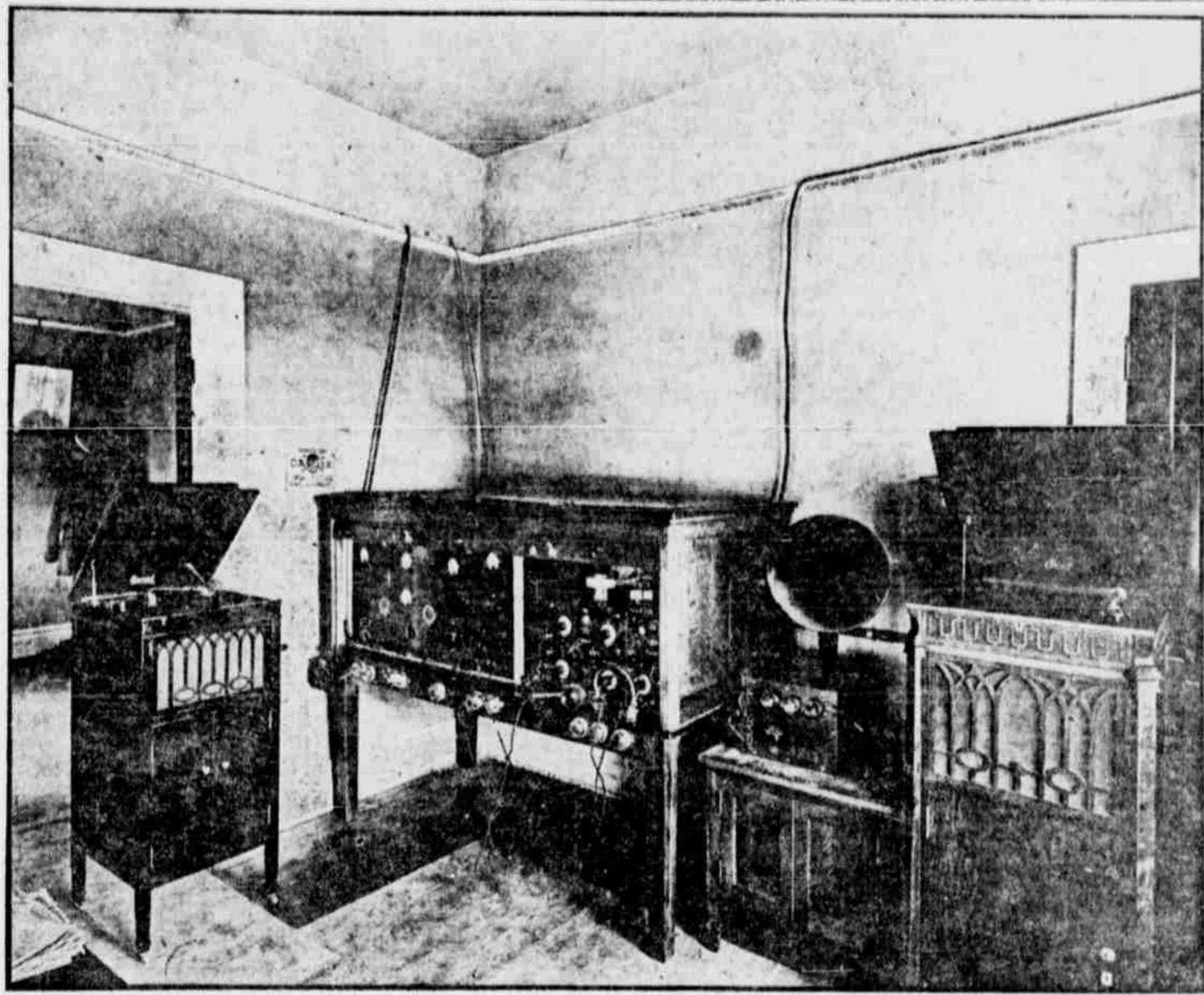
The future development of this station will make it surpassing in all respects.

The Receiver. The receiving set used to good advantage in this station is a Ken-

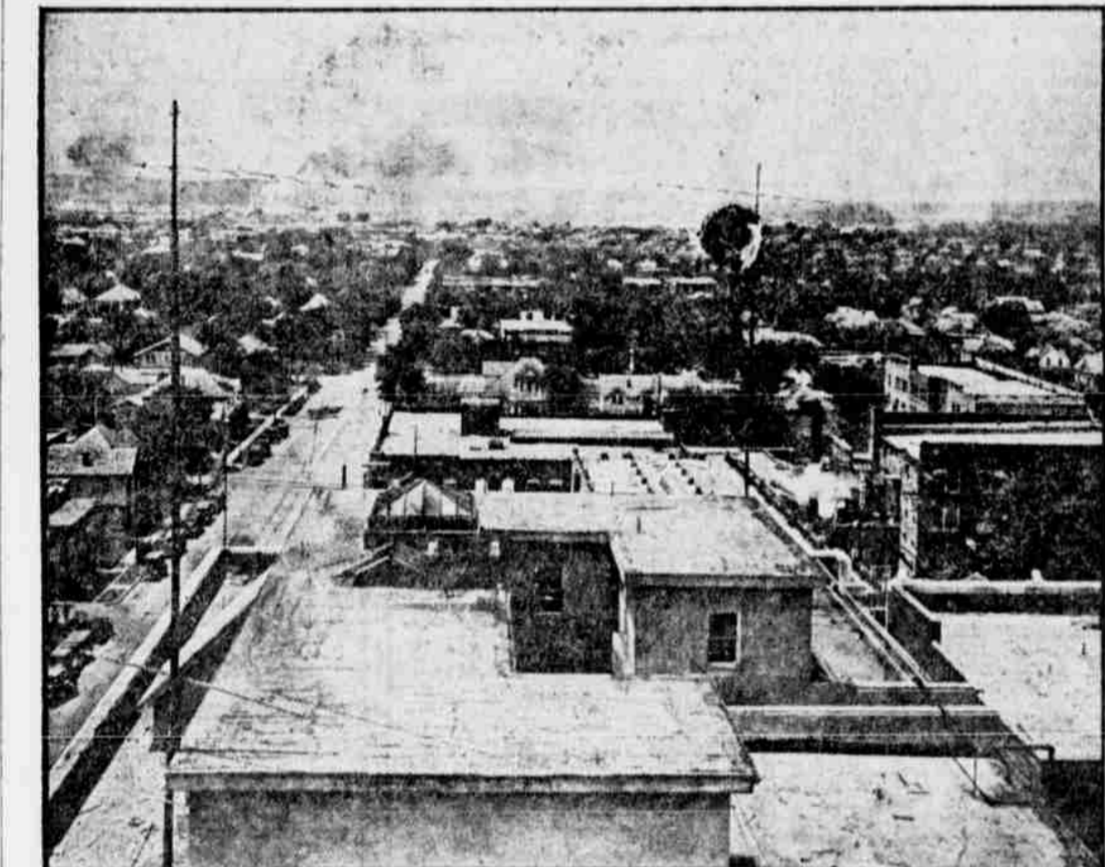
U.S. RADIO CO. OF PENNSYLVANIA, INC. Sole manufacturers of the Best Crystal Mounted and Unmounted.

U.S. RADIO CO. OF PENNSYLVANIA, INC. Sole manufacturers of the Best Crystal Mounted and Unmounted.

Front View of WEH Broadcasting Transmitter



A front view of WEH, the Midland Refining company-Tulsa World broadcasting station, located on the top floor of the Unity-World building, fourth and Boulder, in Tulsa.



In the lower picture is seen the antenna. It is supported by two 48-foot masts, consisting of eight wires, separated two feet apart and having the same number of wires in the lead, which centers near the window, seen in the center of the Unity building.

erally connected to a Western Electric power amplifier and loud talker. A break in system of operation is used, which makes it possible to station is transmitting. The three hear any station calling while the switches directly under the receiving set control the filament current for the receiving set, and the plate voltage.

The antenna system used at WEH is a very elaborate arrangement, using a counterpoise, which is stretched under the aerial. The aerial is supported on 55-foot poles, which are guyed at frequent intervals and insulated carefully from the antenna proper.

The antenna system used at WEH is a very elaborate arrangement, using a counterpoise, which is stretched under the aerial. The aerial is supported on 55-foot poles, which are guyed at frequent intervals and insulated carefully from the antenna proper.

The antenna system used at WEH is a very elaborate arrangement, using a counterpoise, which is stretched under the aerial. The aerial is supported on 55-foot poles, which are guyed at frequent intervals and insulated carefully from the antenna proper.

U.S. RADIO CO. OF PENNSYLVANIA, INC. Sole manufacturers of the Best Crystal Mounted and Unmounted.

so, that all music may be played in a separate studio. This will give a varied program, and greatly help in giving the broadcast public what they want.

"Prosperity Special" Starts for South America With Apparatus

PITTSBURGH, Pa., July 1.—As the first shipment of material in the refitting of the \$7,000,000 contract for the electrification of the Chilean State railway, awarded the Westinghouse Electric International company last October, a train consisting of 39 cars of electrical apparatus has been started from East Pittsburgh, Pa., on its long journey to South America.

Mounds to Celebrate. MOUNDS, July 1.—A Fourth of July celebration will be held here under the management of the American Legion and the baseball boys.

Amplify The Broadcasted Concert with a Prest-O-Lite "A" BATTERY

Mahogany finished case—Ball handles—Rubber feet—Specially designed Vent preventing spraying or spilling of electrolyte.

Oklahoma Battery & Supply Co. 11-13 West Seventh Osage 4281

A complete line of batteries for Radio and Motor

RADIO WILL SOON BE ALLY OF AUTO

Official Broadcasts an Automobile Message From Big Station

Asserting that the radio is now in the economic position in which the automobile industry found itself in its adolescence of 16 years ago, Alfred Reeves, general manager of the National Automobile chamber of commerce, in a message broadcast from Newark, on June 18, declared that the wireless telephone business will soon develop into a position of high economic importance.

Experiments already have been made that indicate a future alliance between the radio and the automobile in the performance of various functions, Reeves said.

Island Without a Country Has Call "U. S."

Off Honduras in the Caribbean, lies a little piece of land called Swan Island, where Americans have lived for many years although the nationality or ownership of the island has never been decided.

Several allegations are being made in the set, which will greatly increase its power and range, and render the concerts still clearer for the listeners.

Would Improve Health.

PHOENIX, July 1.—A mass meeting to consider local health and sanitation problems was held at the city hall and Dr. J. T. Wharton, county health officer, and James H. Lee, state health inspector, explained the regulations of the state health department, and made suggestions as to the best means of improving the sanitary conditions.

Music Was First Broadcast in 1907 by DeForest

So much interest is being shown in the beginnings of radio broadcasting, in the present awakening of public interest in the radio art, and so many inquiries are being made regarding the pioneer broadcasting of Dr. Lee DeForest, that it might be well at this time to pull down a few of the historic data in the development of this notable American art.

It is interesting to know that the first broadcasting of music was not by means of the phonograph as generally used at present. The spring of 1907 saw the radio distribution of synthetic electrical music, generated and played in a building at the corner of Broadway and Thirty-seventh street, New York City.

The location of what may properly be described as the first actual radiophone broadcasting station of the world, however, was in the old Parker building, Sixty-second street and Fourth avenue, New York City. On the top floor of this building was the laboratory of Dr. Lee DeForest, two diagrams on the roof of this building furnished the necessary support of the antenna.

The first actual application of the De Forest radiophone in reporting a news event was no doubt the reporting of the yacht races on the great lakes in the same summer of 1907; gramophone music was then furnished between the spoken bulletins.

In the operative season of 1908-09 there was a temporary installation of radiophone broadcasting station on the roof of the Metropolitan opera house in New York City. Microphones concealed among the footlights of the stage, connected with the transmitting station, then gave the first radio opera in the history of the art.

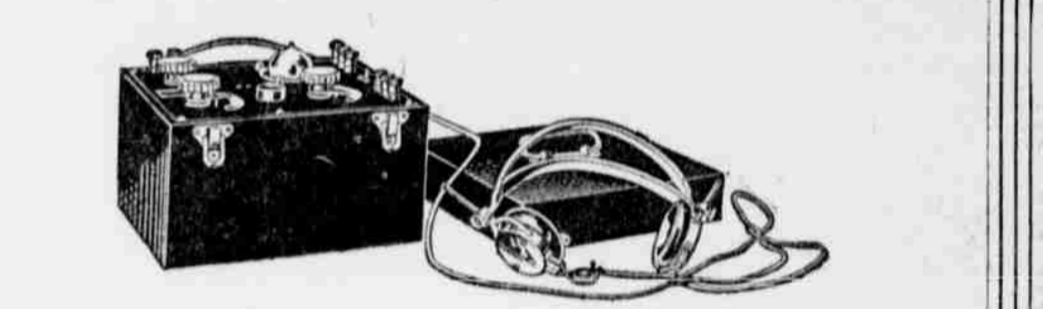
were the radio operators on the ships in New York harbor. The first opera artist to sing directly into the microphones of a radiophone transmitter was Madame Marconi, Oscar Hammerstein's dramatic soprano, who sang at a special performance at New York City.

Radio news and music was first furnished on a regular program in the fall of 1916 in Hightbridge, N. Y. In connection with the New York American, election returns were supplied to the radio amateurs of the eastern states in the 1916 campaign.

Licensed During Week of July 18

- Call Station. W. F. A. Y.—Daniels Radio Supply company, Independence, Kan. K. F. A. C.—Glendale Daily Press, Glendale, Cal. W. F. A. X.—Arthur L. Kent, Birmingham, N. Y. W. F. A. U.—Edwin C. Lewis, Inc., Boston, Mass. W. F. A. W.—Miami Daily Metropolis, Miami, Fla. W. F. A. Z.—South Carolina Radio Shop, Charleston, S. C. W. F. A. V.—University of Nebraska, Lincoln, Neb. W. G. A. F.—Goller Radio Service, Tulsa, Okla. W. A. A.—Valdemar Jensen, New Orleans, La. K. F. A. D.—McArthur Bros. Mercantile company, Phoenix, Ariz. W. G. A. C.—Orpheum Radio Store company, Brooklyn, N. Y. W. G. A. D.—Spanish American School of Radio Telegraphy, Encsonda, P. R. K. F. A. E.—State College of Washington, Pullman, Wash.

A Complete Line of RADIO Apparatus and Supplies. If our stock does not include the set you want we will build it for you and guarantee it to give satisfaction. We make conservative claims for our apparatus and our stock is complete. Come and see us. Gould Radio Electric 110 West Fourth St. Tulsa Next Door to Gas Office



The Big Little Shop The Best in Radio Supplies AT A BUYING PRICE

Everything for the Radio Plant. You can build your own set from our parts or we can supply you with complete outfit. LARGE MAGNAVOXES SMALL DeFOREST WESTINGHOUSE EVERREADY BATTERIES Styles A and B Tungan Rectifiers Power Amplifiers Expert advice to amateurs. All classes of cable and wire. Radio Supply Co. 227 South Boston — Just Off of Third Street MAIL ORDERS SOLICITED

R-A-D-I-O Enjoy the Daily Concert in Your Own Home Prices of complete sets range from \$20 up. We also have a complete stock of parts for making your own set. Test your set on our aerial. The Radio Shop INCORPORATED 215 South Boulder Osage 4064 Tulsa, Okla.