

# Latest Market News

## ADVANCE IN HEIFERS AND YEARLINGS SEEN

**By Associated Press**  
**FORT WORTH, April 5.**—Cattle receipts were 1,200 cattle and 300 calves. Steers did not command any advance, but cows, heifers and yearlings were strong to 25 cents higher, while bull values remained unchanged.  
 An advance featured the big market, prices being around 10 to 15 cents higher than yesterday's opening. Hog receipts were 2,500 head.  
 About 1,000 head arrived in the sheep house. A double deck of clipped wethers and yearlings brought 9.00, the market being steady.  
 Cattle, heifers 2.50; stockers 2.25; calves 2.00; cows 2.50; yearlings 2.50; heifers 2.50; bulls 2.00; calves 2.00; sheep 2.00; hogs 9.75; medium 9.50; heavy 9.00; common 7.50; rough 5.00; pigs 5.00.  
 Sheep lambs 3.50@15.00 yearlings 9.00; wethers 6.50@9.25; ewes 6.00; culls 1.00@2.00; stocker sheep 4.50; feeder lambs 7.50@12.50.

## COTTON IS EASIER FOLLOWING REPORT

**By Associated Press**  
**NEW YORK, April 5.**—Yesterday's buyers were evidently disappointed by a less unfavorable weekly report from the weather bureau than anticipated and the cotton market was easier today under liquidation and New Orleans selling. New crop months were distinctly weaker, with October selling off 17 or 20 cents (quinta net lower), and the close was barely steady at a net decline of 7 to 20 points.  
 High, Low, Close  
 May 18.97 17.91 17.91  
 July 17.44 17.28 17.28  
 October 17.21 17.01 17.01  
 December 16.75 16.55 16.55  
 January 17.21 16.95 16.95

## SHIPPING PROSPECTS CAUSE WHEAT DROP

**By Associated Press**  
**CHICAGO, April 5.**—Prospective liberal shipments of wheat to Chicago from China and other primary markets did a good deal today to bring about a decline in wheat prices here. The close was unsettled, 3/4 to 1/2 cent lower, with May \$1.25 1/2 to \$1.20, and July \$1.15 1/2 to \$1.10. Corn finished 1/2 to 3/4 cent down; oats unchanged to 1/2 cent off, and provisions at 1/2 to 1/4 cent advance.  
 Despite wet weather corn and oats averaged lower in price with wheat. Good wheat in circulation about cheap offerings from Minneapolis and Duluth, where stocks both of corn and oats were reported heavy.  
 Higher quotations on hogs gave an upturn to the provisions market.  
 High, Low, Close  
 Wheat—  
 May 1.32 1.32 1.29 1.29  
 July 1.19 1.19 1.17 1.18  
 Corn—  
 May .58 1/2 .58 1/2 .57 1/2 .57 1/2  
 July .61 1/2 .61 1/2 .61 1/2 .61 1/2  
 Oats—  
 May .36 1/2 .36 1/2 .36 1/2 .36 1/2  
 July .38 1/2 .38 1/2 .38 1/2 .38 1/2  
 Pork—  
 May 19.75  
 Lard—  
 May 10.90 11.00 10.90 11.00  
 July 11.05 11.25 11.05 11.25  
 Hides—  
 May 11.45 11.47 11.37 11.37  
 July 10.80 10.80 10.72 10.72

## MRS. ATHERSON WRONG DECLARES MRS. GEORGE

**(CONTINUED FROM PAGE ONE)**  
 "Just because there may be more old maids than bachelors doesn't indicate that women outnumber the men. It means that she cannot overcome her disappointment upon discovering that men do not grow up and can never attain her ideal. She dreams of the perfect man—but lives alone."  
 And Mrs. George says, in part:  
 "I believe that all women at better off married and that a woman should marry even if she cannot find her ideal. Marriage is the very best career a woman can have."  
 "Of course, there are women who never met the man they considered desirable as a husband but there are just as many bachelors who never found the woman they wanted for a mate."  
 "This thing of woman being superior to man's good enough—it's nonsense!"  
 So Mrs. Atherson claims woman is superior.  
 And Mrs. George says she's all wrong.  
 Who do you think is right?  
**Detective To Be Deported.**  
**By Associated Press**  
**PATERSON, N. J., April 5.**—Immigration Inspector Downer announced today that Jere T. Prinead, head of the Federal Detective Bureau here, had been ordered deported as an undesirable alien.

## BANDITS MURDER MAN AND WOUND HIS WIFE

**By Associated Press**  
**CHICAGO, April 5.**—John J. Colby, proprietor of a delicatessen shop, was shot and killed and his wife seriously wounded today by six negroes who held up the shop, took \$500 and escaped in an automobile.  
 The signs of good printing  
 AMARILLO, U. S. A.  
 Tel 2805 514 Taylor St.

## J. F. BROMERT, D. C.

**Amarillo's Original Chiropractor** established five years. Complete X-Ray Service. Phone 1028-3030. New location Western Building, across from the court house.  
**Don't "Baby" Corns**  
 Don't get and coddle, nurse or "doctor" such annoying joy killers. Banish them—quickly, painlessly, forever with "GETS-IT!"  
 Not only hard corns or soft corns but every kind of corn or callus surrenders to "gets-it" and peels right off. It takes just a few seconds to stop the pain with two or three drops. Go to your druggist today. Get a bottle of "gets-it!" Your money back if it fails to peel them off. Used by millions. Costs but a trifle. E. Lawrence & Co., Mfr., Chicago.  
 Sold in Amarillo by J. W. Collins Drug Co., Duke Drug Co., Salter Lindsay Drug Co., Fly Barton Drug Co.

## Cash for Fords

I will pay you Cash for your Ford Sedans or Coupes.  
**See Williams**  
 106 E. 5th St.  
**Our Eye-Glass Service**  
 Will help you to preserve your eyesight. NOTHING will restore it when once lost. Let us make you a pair of KRYPTOK GLASSES THE INVISIBLE OPTICALS. And be assured that you are wearing the best thing obtainable for your eyes. HYDEN'S  
 Corner 7th and Polk Est. 1912  
 Apply Ballard's Snow Lintment to joints that ache. It relieves bone ache, muscle ache and neuralgic pain. Three sizes, 30c, 60c and \$1.20 per bottle. Sold by Randall Drug Co.

**Chicago Live Stock.**  
**By Associated Press**  
**CHICAGO, April 5.**—Cattle, receipts, 8,000; fairly active; beef steers mostly steady to strong; spots higher on better grades; top 49.25 for heavy yearlings; bulk beef steers \$7.25@8.50; sho-stock strong to 15 higher; bulls strong; veal calves steady; stockers and feeders steady to strong; bulk fat she stock 5.50@6.75; bulk coal calves around 8.50 to stockers with few best at 9.00.  
 Hogs, receipts 12,000; active; mostly 19 to 15 higher than yesterday's advance; some lights up more; shippers brought about 12,000; holdovers moderate as big packers bought very sparingly; top 41.75; bulk 19.10@19.50; pigs strong to 15 higher; bulk desirable 1.00 to 1.25 pounds 10.00@10.25.  
 Sheep, receipts 8,000; killing classes strong to 25 higher; woolled lamb top \$18.25; top shorn 12.85; bulk 13.85@13.85; bulk 12.35@15.15; shorn Texas yearlings and two 12.25; shorn Texas 10.40; top woolled ewes 10.50; native spring lambs 15.75@19.00.

**STOCKS TAKE RISE ON IRREGULAR LIST**  
**NEW YORK, April 5.**—Prices moved irregularly upward at the opening of today's stock market, but the variety of issues traded indicated another active session. Leaders of the railway and industrial groups were not materially changed. Speculative interests centering in the sugars, cheap oils and specialties. Barnwell "A" rose one point, with Pierce Oil and Manati sugar. Cuba cane and A-I Chemical and Davison Chemical were better by 1 to 1 1/2 points.  
 Special issues were influenced by favorable news and good operations, but the general movement had its basis to a large extent on a growing belief that fundamental conditions warranted a higher range of values.  
 The closing was strong. Sales approximated 1,500,000 shares.  
**Texas Cotton.**  
**DALLAS, April 5.**—Cotton middling; 16.90, steady.  
 Houston 17.25; steady.  
 Galveston 17.50; steady.

**Kansas City Live Stock.**  
**KANSAS CITY, April 5.**—Cattle, receipts, 5,500; yearling and light steers steady to higher; best yearlings 8.40@8.50; other steers steady to weak; best heavy steers 8.25; stockers steady to strong; best yearling heifers 7.60@7.70; better grades cows 6.00@6.25; stockers and feeders 10 cents to 15 cents higher; best stockers 7.65; good feeders 7.00@7.25; other classes steady; top ewe yearlings 9.00; cutters 2.75@3.25; culls 4.00@4.25; bulls 2.75@4.50.  
 Hogs receipts 8,000; unevenly 5 cents to 10 cents higher top 19.30; bulk 9.85@10.20; sows 8.55@9.00; stock pigs 10 to 15c higher; best 19.25; medium to good 9.25@9.50.  
 Sheep receipts 5,000; strong; shorn Texas wethers 9.50@9.50; lambs generally 25 cents higher; bulk 15.50@16.00; shorn Texas lambs 12.25.

**HOUSES AND BARN ARE WRECKED BY TORNA**  
**GAUSE, Texas, April 5.**—Several houses and barns were wrecked a half mile west of here yesterday afternoon when a tornado swept over a path about 75 yards wide. No one was injured.

**3 DEAD AND MANY HURT IN FLOODED RIVER LAND**  
**(CONTINUED FROM PAGE ONE)**  
 The river is three feet above danger line. **Benzos Overflows.**  
 The Brazos River is overflowing in low places. I and G. N. train service on the Fort Worth branch was suspended. Little River in Milam County is out of its banks and will meet the Brazos, causing an overflow of lowlands very shortly. It was reported from Hearne. The Port Sullivan country is inundated over hundreds of acres.  
 Three levees in the Chambers district were reported broken today. Many oil derricks in every section of Navarro County were reported blown by the wind recently.  
 The swirling muddy waters of the Guadalupe River today were barely back in bank from last week's rain report for DeWitt County stated, but yesterday's rain fall caused another spread of water over the lowlands. The Guadalupe River at Victoria registered eighteen feet today, three feet below last Sunday's rise. The stage of the river is thirty-one feet at Gonzales and fourteen feet at Cuero. The crest of the river is not expected to reach Victoria before next Saturday.  
 Estimated damage between \$600 and \$700 was done to roads in Angelina County.

**Cash Grain.**  
**By Associated Press**  
**KANSAS CITY, April 5.**—Cash wheat, No. 2 hard 1.18@1.40; No. 2 red 1.25@1.27.  
 Corn No. 2 white 52@55; No. 2 yellow 53-1/2@54.  
 Oats No. 2 white 27 1/2-1; No. 2 mixed 25@26.  
**CHICAGO, April 5.**—Wheat No. 1 hard 1.35-1.4; No. 2 mixed 55 1/2@57; No. 2 yellow 57@57 1/2.  
 Oats No. 2 white 25 1/2@27 1/2; No. 2 mixed 23 1/2@25 1/2.  
**ST. LOUIS, April 5.**—Wheat No. 2 hard 1.27-1.2; No. 2 yellow 56 1/2@57; No. 2 mixed 53-1/2@54.  
 Oats No. 2 white 27@27 1/2; No. 2 mixed 25 1/2@26 1/2.

**Arrested in India**  
**Samuel Stokes Evans**, of a prominent Philadelphia family and an American missionary, and his wife, a native Indian, have been arrested by British officers as followers of Ghandi, the imprisoned leader of the Non-Co-operationists.

**To Stump U. S.**  
 Last photograph of Lady Astor. She will arrive in New York April 19, make a speech that day, go to Baltimore for another speech the next day and will speak in Washington and other cities.  
**Steam Dying, Telephones 1186, 1191.**

**Sure Relief FOR INDIGESTION**  
 BELLANS FOR INDIGESTION 75 CENTS  
 BELLANS Hot water Sure Relief  
 25c and 75c Packages Everywhere

**SALESMAN \$AM**  
**Two of a Kind**  
**By Swan**

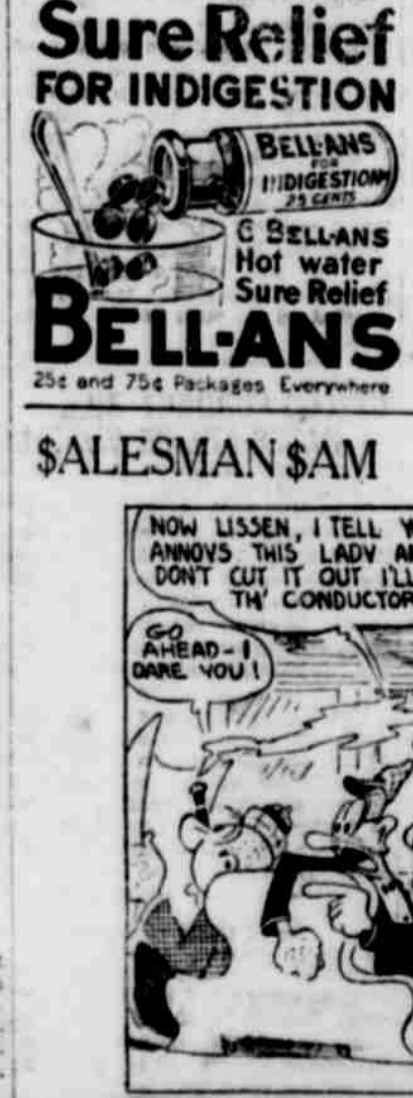
**Liverpool Cotton.**  
**By Associated Press**  
**LIVERPOOL, April 5.**—The cotton association's war memorial was unveiled today and on account of this ceremony trading on the cotton exchange did not begin until 2 p. m.  
 Cotton market in fair demand prices steady; good middling 11.02; fully middling 10.72; middling 10.57; low middling 9.77; good ordinary 9.92; ordinary 9.42. Sales 7,000 bales including 5400 American.

**Liberty Bonds.**  
**By Associated Press**  
**NEW YORK, April 5.**—Liberty bonds closed 1 1/2-2 1/2 @ 98.86; first 4 99.20 bid; second 4 98.80; first 4 1-4 99.32; second 4 4-4 99.02; third 4 1-4 99.50; fourth 4 1-4 99.25; victory 2 3-4 100.04; victory 4 3-4 100.90.

**Coffee**  
**NEW YORK, April 5.**—The market for coffee futures showed renewed firmness today on covering by May shorts and a scattering demand which included some trade buying of September and May contracts, accompanied by talk of a better inquiry from the interior for forward shipments from Brazil. Reports of firmness in the Santos market was also a factor and after opening 2 to 5 points higher the more active months sold 3 to 15 points above last night's closing quotations.

**Chicago Produce**  
**CHICAGO, April 5.**—Potatoes weak; Wisconsin sacked round whites \$1.50 @1.65 cwt; Idaho sacked russets \$1.50 @1.70 cwt; Colorado sacked russets \$1.50 @1.70 cwt; Colorado sacked russets \$1.50 @1.70 cwt.  
**CHICAGO, April 5.**—Butter lower; creamery extras 23 1/2 @ 24; case unchanged; receipts 27,100 cases; poultry alive lower, fowls 25 1-2; springers 25; roosters 25.

**Wichita Market.**  
**WICHITA, Kans., April 5.**—Hogs 1100, market 10 higher; top 19.10; bulk \$9.50@10.10.  
 Cattle, 600; market steady, active; beef steers \$5.25@7.00; beef heifers \$4.00@5.00; beef cows \$4.00@5.00; stock cows and heifers \$2.25@4.50; bulls \$2.00@3.00; calves \$2.50@3.00; sheep \$4.00, steady; good 12 to 15 pound lambs at \$15.00.



# Nunn Electric Company

417 Polk Street  
 Amarillo, Texas

**SALESMAN \$AM**  
**Two of a Kind**  
**By Swan**