

THE WISCONSIN AND HER GALLANT MEN MAKE A FINE APPEARANCE

(Continued from page 1.)

with two white stars floated out from the mainmast of the New Orleans, and the U. S. F. S. Wisconsin dropped her 'F.'

The 'Men behind the Guns' on the Wisconsin flatter themselves that they have batteries which can be pitted against any other batteries in the world and there are several men on the battleship who have records to be proud of in target work.

Yesterday was a black Friday with the officers and men. The vessel was being coaled and everything was covered with a fine dust. It was a 'colored' population aboard until about 4 o'clock when the black began to peel off under the force of a dozen streams of water and the jacksies themselves made the best of all available hose nozzles to whiten their skins. By 5 o'clock the battleship presented a far different appearance and once more looked like one of the 'white squadron.'

Two hundred and ten tons were added to the bunkers yesterday in addition to that taken in the day before. The Wisconsin now has her complete coal tonnage aboard, but will probably remain at the dock until she departs for Cavite, instead of anchoring in the stream.

WISCONSIN'S NEW CAPTAIN.

When the Pacific Mail steamship China arrived yesterday afternoon from San Francisco one of her passengers was Captain Richardson Clover, U. S. N., en route to the Philippines. Captain Clover will be the Wisconsin's next commander, relieving Captain Uriel Sebree, the present commander. Captain Clover will take command about the middle of January, whereupon Captain Sebree will return to the United States. Captain Clover visited Admiral Evans shortly after landing, and then made a call upon the vessel which he will take over next month. Captain Clover was selected by the Navy Department to command the battleship Ohio when she was placed in commission.

WISCONSIN'S FORMER VISIT.

When the Wisconsin was here last May she had a large crew and a large number of young officers—'middies'—many taking their first real cruise. They are now back here bronzed and weather-beaten. The vessel anchored off port on that occasion on May 17, 1903. The battleship newspapers in speaking of the Honolulu visit, says: 'The city of Honolulu crept into view and at 12:15 p. m. the Wisconsin swung at anchor outside the harbor. Seven guns were fired and repeated in salute to Captain Rodman of the Naval Station and Captain Stuart of the Yorktown. * * * The Hawaiian people welcomed the Wisconsin with open arms and the press was most liberal with its praise of the ship, her officers and men. Transportation companies and real estate men do not exaggerate their descriptions of Honolulu and its beautiful surroundings. The people of Honolulu are hospitable and generous and everything was done to make the stay of the Wisconsin a pleasant one. Officers and men alike will undoubtedly hold a kindly remembrance of Honolulu and the hospitality of the community.'

WISCONSIN'S HOSPITALITY.

The forecastle of the Wisconsin is noted for its great size and extreme hospitality. The men of the fleet are continually entertaining men from other vessels aboard, and on a recent occasion at Chefoo a banquet was held there at which were present representatives from every vessel of the American fleet on the station. At another time the generous men entertained representatives from the foreign war-vessels. There is a fine minstrel troupe aboard which adds much to the gaiety on such occasions.

BADGERS MADE MONEY.

There was a memorable race between crews of the Kentucky and the Wisconsin while both vessels were at a Japanese port, and it is said that the Badgers filled their purses with about fifteen thousand dollars of the Kentuckians' money. The Badgers feel so good over this memorable contest that they are willing to admit that the Kentuckians can lay it all over them on the baseball diamond.

ATHLETES ON BOARD.

The battleship Wisconsin boasts of a thoroughly equipped baseball team, American football eleven, with an Association football aggregation as well, a racing crew which the men will back against anybody, and several of the men are all round athletes. The Wisconsin baseball boys were out yesterday for practice.

OPEN SHIP SUNDAY.

The Kentucky and the Wisconsin will be open for public inspection on Sunday afternoon. Both vessels will be in thorough shape for the reception of visitors by that time. The Oregon may also be thrown open the same day. Both the Kentucky and Wisconsin are now boarded from Naval Dock No. 2, the Kentucky having been shifted over to No. 2 yesterday to permit Captain Niblack to load coal barges in the slip at No. 1 dock.

ADMIRAL TERRY CALLS.

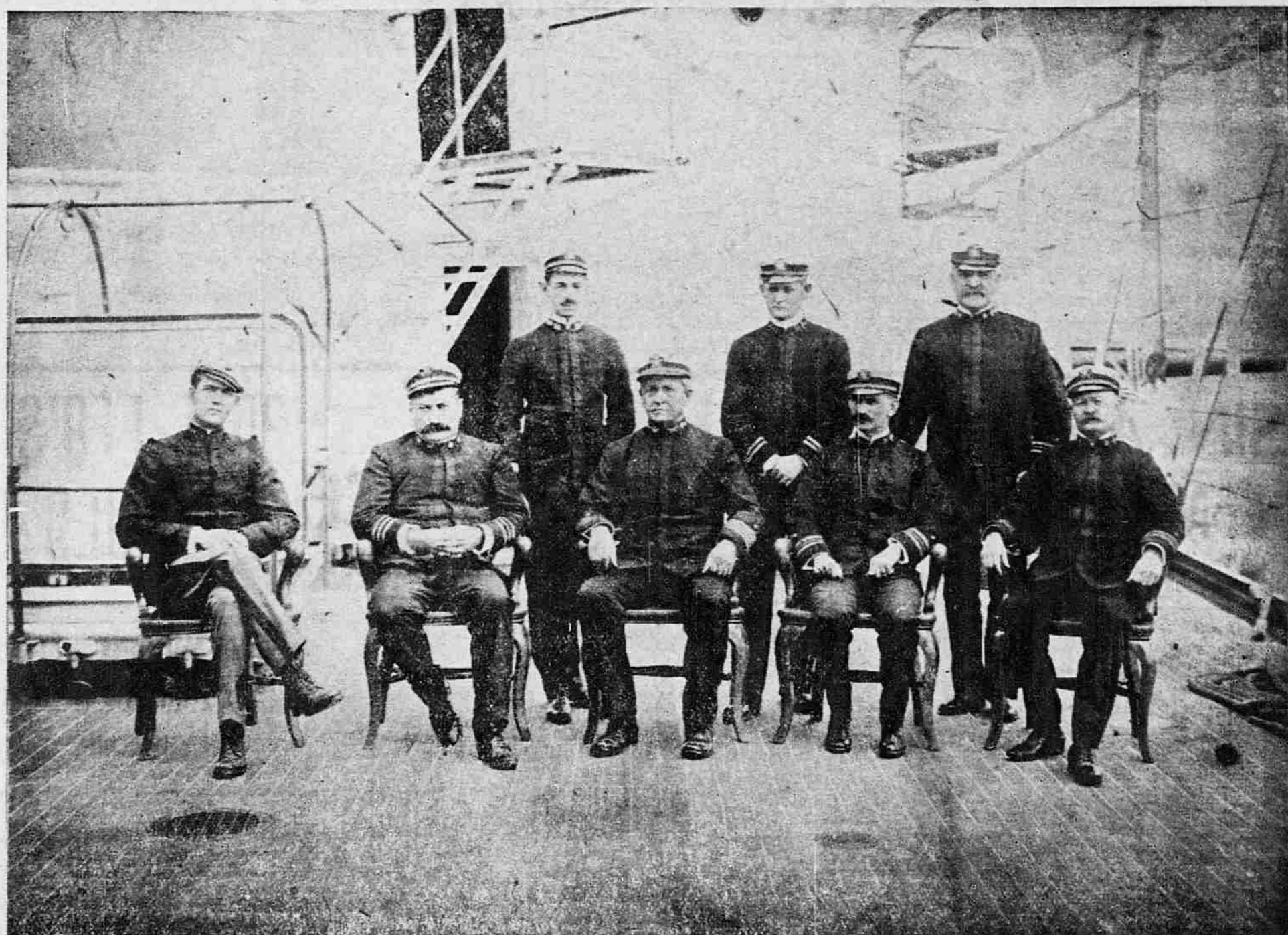
Admiral Terry, commandant of the Naval Station, returned the official calls of the fleet captains yesterday.

BATTLESHIP GOATS FIGHT.

The goat pets of the Wisconsin and Kentucky were given an opportunity to test their fighting qualities yesterday morning. The two goats were put on dock No. 2 and locked horns immediately. The Kentucky's mascot routing the Wisconsin's. The battle was viewed by almost every sailor on the two warships, work for the time being having been suspended.

MACHINERY IN FINE CONDITION.

Seldom has a fleet of vessels arrived in port with so few repairs needed to the machinery. In spite of the pressure exerted upon the engines and boilers on the 3400 mile trip from Yokohama to Honolulu, in heavy weather a portion of the time, every vessel of



CAPTAIN URIEL SEBREE OF THE BATTLESHIP WISCONSIN AND OFFICERS IN CHARGE OF DEPARTMENTS.

the fleet reports the machinery to be in excellent shape. Flag Lieutenant Chapin of the Kentucky finds this to be quite remarkable. It is a demonstration of the excellent management of Uncle Sam's warships, for every vessel, as soon as she is coaled, is ready to put to sea.

DANCE FOR THE FLEET OFFICERS

A dance and concert will be given by the management of the Alexander Young Hotel for the officers of the Asiatic fleet next Thursday—Christmas eve.

Admiral Evans and Manager Lake had a conference in regard to the matter yesterday and the Admiral expressed himself as highly pleased with the plans for the entertainment of the fleet officers. He also promised to send a couple of bands from the battleships to help out the musical feature of the affair.

Mr. Lake has also requested Governor Carter to permit the Territorial band to play at the hotel roof garden on Christmas eve, and the probabilities are that there will be a triple band concert Thursday evening.

OFFICIAL RECEPTION TO FLEET OFFICERS

The Governor will give a reception at his residence, Nuuanu Valley, on Monday afternoon next, from 3 to 6 p. m., in honor of Admiral Evans, Admiral Cooper and the officers of the American fleet. An invitation to all citizens is extended to meet the officers on this occasion. No formal invitations will be issued. The Hawaiian Government band will be in attendance.

ENTERTAIN ARMY AND NAVY HEADS

A luncheon will be given by the Governor at 12:30 today at the Alexander Young Hotel, in honor of Admiral Robley D. Evans and General Arthur MacArthur.

HUNDRED THOUSAND DOLLARS FOR NAVY

One hundred thousand dollars have been paid over to the navy people by the First National Bank of Hawaii since the arrival of the fleet. One hundred thousand dollars distributed among the men of the fleet in the next two weeks would mean that a very generous slice would be left in Honolulu, as the jacksies are good spenders.

NAVAL COLLIERIES NOW IN PORT

Two more vessels arrived yesterday to swell the list of naval vessels in Honolulu's harbor. These are the United States naval colliers Pompey and Nan Shan, both of which came into port yesterday afternoon. The Pompey was moored in Naval Row alongside the Oregon, and the Nan Shan is berthed at the Hackfeld wharf.

The Pompey, which was reported yesterday morning as having arrived off port the night before, came into the harbor at 1 p. m. The Pompey has about 1650 tons of coal aboard and her own bunkers will be replenished with about 250 tons. The Pompey will remain here until about three days before the fleet is ready to depart for the Orient. She will precede the fleet, calling at Midway and Guam. Coal will probably be furnished the fleet at Guam from the Collier.

The Pompey sent a boat ashore at Midway to take off mail and was also given the following letter by the cable people: 'You are a briqk. Good luck to you and yours. (Signed), D. Morrison, H. P. Butler, A. Moore, Tremont Morse, D. Crew, Read, C. Macmichael, O. J. Floren, E. E. Colley, (wife of the Superintendent), Ben W. Colley.'

Captain Adamson was here two years ago in command of the collier Alexander. Louis Reynolds of Honolulu was with Captain Adamson when the Alexander was disabled near Porto Rico. Reynolds was one of the crew which went in a boat in search of assistance.

The Nan Shan came into port in the afternoon. She called at Midway on the night of December 12. It was dark and the vessel went in too close and bumped on the reef. The collier was uninjured however, and slid off immediately into deep water. Captain Briedaux reported the incident to Admiral Evans.

COMPLETE ROSTER OF WISCONSIN

The complete roster of officers and men aboard the battleship Wisconsin is as follows:

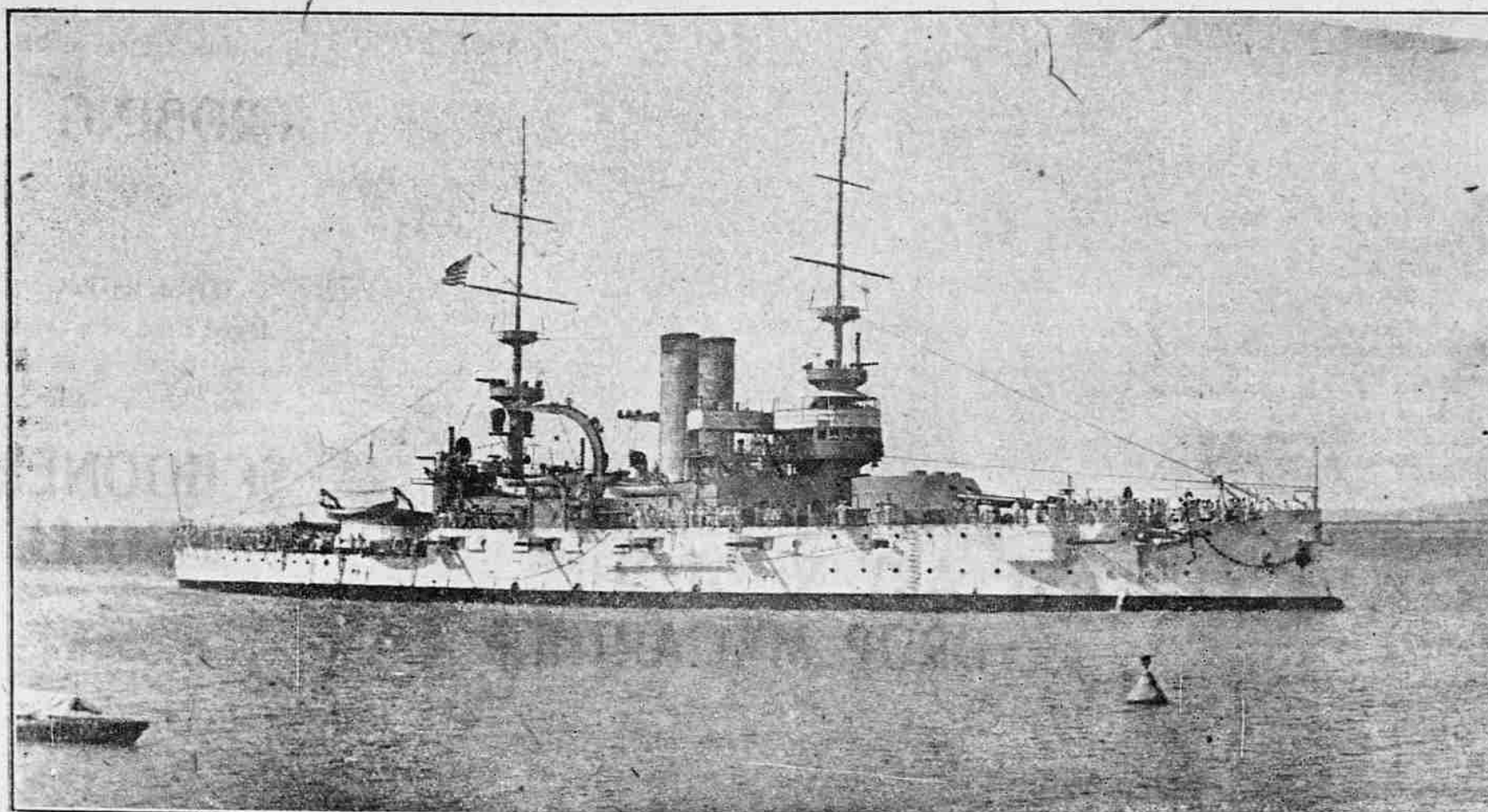
OFFICERS.

Captain Uriel Sebree; Lieut. Commanders H. T. Mayo, A. W. Dodd, G. W. McElroy; Lieutenants H. A. Wiley, C. T. Vogelsgang, W. D. MacDougall, F. N. Freeman; Ensigns H. B. Soule, F. R. Nalle, H. W. Osthaus; Midshipmen T. L. Osburn, H. D. Cooke, W. J. Giles, R. S. Holmes, R. A. Koch, F. S. Whitten, J. H. Blackburn, M. K. Metcalf, A. H. Vankeuren, J. D. Wilson; Surgeon J. M. Edgar; Asst. Surgeon J. F. Murphy; Paymaster J. W. Morse; Captain H. C. Davis, U. S. M. C.; 2nd Lieut. W. L. Redles, U. S. M. C.; Boatswain A. H. Hewson; Gunner J. F. Daniels; Carpenter L. S. Ward; Warrant Machinists G. M. Heinen, J. J. Fuller, J. J. Horan, J. A. Hickey; Pay Clerk C. L. Carter.

Alphabetical list of crew as required by Commander-in-Chief.

J. Ahern, W. Tdr; G. Ahlberg, O S; W. S. Albaugh, 1st mus; E. Alberts, Ch El; G. Adams, A 2 C; A. E. Aldridge, C M 2 C; C. L. Allen, seaman; J. T. Allstot, C P; E. Alsberghe, M 2 C; J. Anderson, O S; F. L. Anderson, seaman; P. H. Andross, A 2 C; W. M. Andrews, C P; S. Arita, M Att 3 C; C. L. Armstrong, El 3 C; L. E. Arvin, F 2 C; A. Ast, Lds Trg; G. L. Aulmann, Ch Yeo; C. A. Aurell, Co Stb. W. E. Baise, C P; G. O. Barnes, O S; B. G. Baumgardner, A 2 C; H. E. Bell, O S; G. R. Benz, G M 3 C; H. L. Best, F 2 C; A. J. Boyer, F 2 C; F. Bialczik, seaman; R. J. Bloedorn, Ch Mch; F. P. Bollonia, Shwt; T. Bolger, W Tdr; F. A. Bannifield, O S; J. Bett, O S; T. C. Bowles, El 3 C; E. T. Bovee, A 2 C; T. A. Bovee, A 2 C; G. J. Brind, A 2 C; J. L. Buckley, Lds Trg; A. G. Buening, seaman; S. Burr, Lds Trg; L. Burns, Seaman; L. L. Butterwick, S C 4 C; F. J. Brennan, O S; M. Bramhall, O S; P. Braun, F 1 C; E. M. Bright, El 1 C; J. Bringolf, O S; H. C. Britton, C P; W. E. Bertin, A 2 C; C. A. Brownlee, A 2 C; T. Bronick, C P; J. Bruce, C W Tdr; J. P. Burns, oiler. A. Cabantous, Lds Prg; F. L. Caldwell, O S; F. Caldwell, Ch Mch; G. E. Campbell, A 2 C; W. A. Campbell, F 1 C; W. L. Carvell, A 2 C; W. P. Cart, Ch Yeo; J. H. Chappell, O S; A. Chase, C P; H. Chapin, A 2 C; G. A. Cheek, Mus 1 C; A. G. Cheshire, Lds Trg; L. A. Christianson, Cox'n; J. C. Christenson, O S; J. Cienfuegos, M Att 3 C; J. A. Claxton, G M 2 C; C. E. Coleston, A 2 C; J. M. Collins, C P; P. H. Collins, O S; E. Collins, Bl Sth; F. F.

Collins, oiler; G. W. Cole, C P; J. Condon, F 1 C; L. M. Comstock, Ldr; E. T. Conkright, A 2 C; R. D. Cooper, Mkr 2 C; Ah Chun, W RSt; M. A. Copeland, seaman; J. R. Corson, Bl Sth; F. C. Cottle, Mch 1 C; H. R. Coryell, App 2 C; W. A. Cowdry, Lds; S. C. Cox, seaman; F. J. Ctibor, seaman; L. R. Culver, Shwt; W. W. Cunningham, A 1 C; W. E. Curtis, Ch Mch; S. Czestluta, O S. E. T. Dayhart, C P; E. R. Dalley, C P; R. L. Daily, A 1 C; W. Danner, O S; P. A. Deannanos, M Att 3 C; C. R. Denney, O S; R. L. DeVoe, O S; J. Dietz, F 2 C; Woo De, Ch Ck; J. P. Dillon, W Tdr; V. V. Dinwiddie, A 2 C; W. W. Dodd, A 2 C; O. Doerr, G M 3 C; J. P. Donahue, F 1 C; W. E. Downey, Cox'n; P. Dougherty, Bl Mkr; T. Doyle, W Tdr; I. Doyle, Jr, S C 2 C; J. J. Dunfour, F 2 C; H. Duncean, seaman; H. Dupeske, A 2 C; J. R. Daly, C P. C. Emvold, seaman; J. H. Edwards, A 2 C; G. L. Eagle, O S; J. Egilt, B M 2 C; M. Eischens, F 1 C; L. Elliott, El 3 C; R. English, O S; R. T. Elliott, F 1 C; E. Emrod, Lds Trg; J. Engels, F 2 C; A. Erickson, A 2 C; T. Evans, G M 2 C; C. O. Evans, A 2 C; A. T. Evans, O S. T. J. Fahey, C P; C. R. Falkenberg, Lds Trg; J. W. Fairbrother, Shwt; W. Fels, G M B C; A. C. Fiske, A 1 C; C. B. Fletcher, oiler; W. Fletcher, O S; W. M. Fitzpatrick, M At A 1 C; J. Fitzgerald, Cox'n; D. M. Foote, A 1 C; V. G. Fores, A 2 C; J. F. Forster, O S; A. W. Frillman, A 1 C; G. Friel, A 2 C; R. W. Fox, O S; D. Foley, F 2 C; W. G. Grove, seaman; F. L. Gordon, O S; S. Glass, A 1 C; C. L. Gabel, Lds Trg; A. Gardiner, Stg Std; M. Gardiner, F 1 C; I. M. Gaunt, Cox'n; L. C. Gentil, F 1 C; C. E. Gibson, F 2 C; N. C. Gliman, oiler; J. Gillen, F 2 C; G. G. Gilmore, C P; T. P. Gleason, oiler; E. Goerke, C C 2 C; J. A. Goldie, Lds Trg; J. Gorman, C P; A. C. Goss, F 2 C; J. J. Gray, G M 3 C; F. M. Green, oiler; W. Greene, S C 4 C; P. A. Green, Lds Trg; S. E. G. Grenzin, Cox'n; M. F. Grimes, oiler; J. M. Griswood, B M 2 C; A. F. Grundman, F 1 C; H. D. V. Graves, El 3 C; H. H. Cripp, A 1 C. D. E. Hamburger, Hosp Std; J. E. Hatcher, A 2 C; A. R. Hildebrandt, seaman; F. Hubbard, seaman; Daw Chang Hung, W R Ck; L. R. Hale, O S; L. G. Hall, O S; J. Hagan, O S; M. Hansen, Cox'n; H. F. Hansen, O S; H. P. Hanson, F 2 C; G. C. Hanson, Mus 2 C; W. W. Hanson, El 2 C; J. J. Hickey, Lds Trg; J. W. Hunter, A 2 C; C. F. Harrier, A 2 C; H. S. Harreschou, A 2 C; S. E. Hartwig, S C 4 C; R. E. Hardy, printer; D. Hasty, Lds Trg; J. Haynes, Lds Trg; A. W. Meise, O S; F. L. Herbst, F 1 C; H. S. Hermansen, oiler; C. Herring, C P; C. E. Hetherington, A 1 C; E. Hill, C P; L. Hing, M Att 3 C; J. T. Hogan, Lds Trg; E. Hoff, O S; H. H. Holmes,



THE WISCONSIN. (Advertiser Photo.)

Yeo 3 C; W. A. Horn, G M 3 C; J. C. Horn, C P; C. Houdek, oiler; F. Hudson, Lds Trg; W. B. Huebner, A 2 C; W. R. Hull, O S; F. E. M. Hulten, O S; F. Hunt, M At A 3 C; H. F. Hunter, C P. S. Ide, M Att 2 C; E. Ingram, Mus 1 C; H. E. Irrgang, A 2 C; C. I. Isbell, bugler. S. Johnson, Ch C; R. W. Johnson, A 2 C; H. Jacobsen, A 2 C; A. Jakobson, Sea; J. W. James, F 1 C; D. Jamieson, G 13 C; C. R. Jenness, A 2 C; C. H. Jensen, A 2 C; W. Johnson, A 2 C; D. Johnson, O S; G. Johnson, Coxn; H. T. Johnson, G C 1 C; F. W. Johnson, A 1 C; J. Johnson, B M 1 C; A. W. Johnson, F 1 C; J. O. Johnson, G M 3 C; J. Johnson, A 2 C; J. L. Jolly, A 1 C; W. W. Jondro, seaman; R. D. Jones, M At A 3 C; A. Jorgensen, S M M; J. A. Joyce, A 1 C. J. J. Keegan, A 1 C; E. Kallum, G M 3 C; F. A. Kane, Yeo 3 C; J. P. Karel, seaman; O. C. Kennedy, Yeo 2 C; T. J. Kenny, G M 2 C; W. E. Kelley, A 2 C; W. E. Kelley, El 2 C; E. Kelly, P & F; P. Kelly, F 2 C; F. M. Kelley, A 2 C; R. M. Keys, A 2 C; Ah King, M Att 3 C; Ah Kin (2nd), M Att 3 C; H. Kingsbury, seaman; J. J. Kirby, C P; F. H. Klatt, Mch 2 C; W. Kleymann, Mus 1 C; J. B. Kolste, Lds Trg; L. Kopf, Bd Mstr; W. Kopf, Mus 1 C; E. Kracht, seaman; C. N. Krenkler, Lds; W. C. Kruegel, Yeo 3 C; J. H. La Due, G M 3 C. J. Q. Lamoreaux, Ptr 3 C; O. Landsberg, Lds Trg; O. Larsen, seaman; R. K. Larson, O S; L. J. Larson, A 2 C; E. R. Ludwig, C P; F. J. Legere, seaman; M. M. Landolt, Bkr 2 C; J. L. Lorcency, S C 4 C; H. Lynch, O S; S. Lucas, seaman; F. J. Lucid, O S; E. Laverty, seaman; J. A. Ledden, Lds Trg; G. Lefebvre, C P; G. A. Lenz, A 2 C; A. G. Lewis, A 2 C; C. Lichtendahl, seaman; D. F. Lightner, seaman; G. L. Lindley, F 2 C; E. M. Locke, F 1 C; W. F. Lockwood, Lds Trg; W. J. Lowe, Ch Mch; T. Ludlow, Ptr 2 C; J. S. Lukowich, Ch Mch; H. E. Lutz, A 2 C. A. A. Madero, Lds; C. J. Madsen, G M 1 C; C. Madsen, O S; J. F. Maher, F 2 C; J. Malattia, C P; J. Mangani, seaman; E. O. Marko, F 2 C; W. F. Marlon, oiler; D. F. Marshall, Mch 1 C; L. J. Marshall, Bkr 2 C; R. Martin, Lds; L. Mundhenk, C P; G. R. Marks, seaman; J. H. Moore, seaman; E. C. Meyer, O S; A. H. Mitchell, A 2 C; W. A. Martin, Q M 3 C; F. J. Marquardt, A 2 C; L. C. Masterson, F 2 C; W. S. Matthews, H A 1 C; R. F. Matthews, W Tdr; H. J. Mayer, Mus 2 C; E. F. Mayer, Lds Trg; J. L. May, A 2 C; J. May, F 1 C; H. S. C. Melke, O S; D. W. Monning, C M 3 C; W. Mast, Yeo 3 C; T. P. Maddock, M At A 2 C; H. R. Mischon, O S; O. W. Mayfield, C P; R. W. Meeker, El 2 C; J. H. Mefford, seaman; O. L. Meissner, Mus 1 C; J. Meier, seaman; H. Menge, A 2 C; W. Merz, Ptr 3 C; L. Metke, A 2 C; F. Meyer, G C 1 C; A. Michelson, Coxn; L. Mickelson, Mus 2 C; E. A. Miles, A 2 C; F. W. Miller, A 2 C; C. A. Miller, O S; G. E. Miller, O S; L. Miller, C P; J. B. Miller, C P; R. H. Miller, A 2 C; R. R. Miller, G C 1 C; S. W. Miller, C P; H. M. Miller, A 2 C; W. Miller, A 2 C; C. L. Mills, A 2 C; A. Milton, C P; R. C. Mitchell, Mch 2 C; H. Miyazaki, W O Ck; D. A. Moberg, O S; J. L. Moore, O S; J. A. Morgan, O S; J. J. Morris, O S; F. H. Moroney, A 2 C; H. C. Morse, O S; N. Moseler, O S; D. Mullins, G M 2 C; E. G. Mundy, El 2 C; C. W. Murphy, B M 2 C; J. G. Murphy, Coxn; F. M. McCoy, Yeo 3 C; W. McGinniss, F 1 C; R. H. McAndrew, seaman; H. S. McClain, C P; A. McCoy, El 1 C; R. G. McCoskey, F 2 C; J. E. McDaniel, Lds Trg; J. R. McFadden, Lds Trg; M. J. McGahan, C P; L. L. McKeever, A 2 C; W. McKinley, M Att 2 C; T. M. McManus, A 2 C; D. B. McPhail, A 2 C. G. Nakazawa, Stg Ck; C. E. Neese, G M 3 C; R. Nelson, Bl Mkr; C. H. Neubert, G M 2 C; W. E. Neubauer, A 2 C; J. R. Newman, A 2 C; F. B. Newman, Coxn; J. D. Newman, Lds Trg; M. F. Ney, Mch 1 C; J. Nichols, O S; W. Niehoff, Bkr 1 C; D. W. Noel, Lds Trg; A. J. North, O S; J. W. Nygaard, A 2 C; T. Nyland, G M 2 C. M. O'Hanlon, oiler; M. M. O'Donnell, S C 3 O C D; A. Olsen, C M 3 C; W. E. Odgers, Bkr 1 C; T. Okim, M Att 3 C; A. A. Olmstead, Lds; T. E. Osborne, Lds Trg; A. Ovans, B M 2 C. W. R. Plumb, C P; E. Puckerling, O S; W. E. Peterson, A 2 C; C. Peterson, seaman; A. F. Przigodca, Mch 2 C; N. Papain, seaman; R. F. Parsons, A 2 C; C. C. Partridge, C P; R. E. Partridge, A 1 C; C. H. Payne, Lds Trg; C. A. Perkins, A 2 C; J. Peterson, A 2 C; J. E. Phelps, A 2 C; A. T. Phillips, Ch B M; E. Phillips, A 2 C; F. F. Pickworth, O S; G. C. Pinney, A 2 C; F. Plattner, W Tdr; C. A. Pond, F 2 C; D. W. Pond, Lds Trg; E. F. Pope, A 2 C; A. H. Porter, A 1 C; E. Porter Lds; B. A. Prusse, Lds; W. Proctor, B M 2 C. R. E. Quinn, A 2 C; E. N. Quisenberry, G M 3 C. L. P. Ramm, C P; H. Rhoades, seaman; I. O. Routsion, A 2 C; J. L. Randall, C P; W. J. Ray, Lds Trg; P. K. Raub, Shwt; B. C. Ross, O S; H. P. Robertson, O S; C. L. Reagan, S C 3 O C; J. C. Reed, Yeo 1 C; H. J. Reddick, seaman; R. A. Reid, Mch 1 C; C. J. Repins, Lds Trg; W. Reynolds, C P; J. G. Rice, O S; W. E. Ridge, seaman; J. Riegling, F 1 C; H. M. Riley, C M 2 C; J. A. Ritchie, Lds Trg; J. P. Rivers, F 1 C; C. N. Robinson, O S; T. C. Robbins, A 2 C; M. M. Rodgers, A 1 C; W. V. Roe, seaman; G. A. Rogers, seaman; G. R. Rohrs, O S; S. W. Rosebrook, Mus 2 C; J. E. Rostedt, Coxn; J. A. Rosengren, Lds Trg; J. Ross, Coxn; F. Rose, S C 1 C; J. H. H. Ross, Lds Trg; A. P. Resek, O S; J. Rothenberg, Mus 2 C; J. R. Royle, seaman; L. Ruppert, C P; W. E. Roberts, A 1 C; F. A. Sellers, O S; S. W. Simpson, Lds Trg; H. Schabel, O S; B. Smith, O S; O. Schmucker, A 2 C; P. A. Skillman, A 2 C; J. W. Satterfield, A 1 C; Ah Sam, Ch Std; R. A. Schriber, O S; J. S. Searcy, O S; A. Swanson, O S; H. Sausen, A 2 C; P. P. Stachowiak, O S; E. Sorensen, O S; C. E. Stewart, O S; W. W. Schupp, O S; J. F. Still, O S; S. P. Schiff, O S; S. Schnell, O S; H. B. Smith, O S; J. F. Sargent, A 1 C; F. F. V. Scharoun, C P; M. C. Scharlau, Lds Trg; R. A. Schiffman, F 1 C; L. Schlicker, Lds Trg; A. Schwarzer, Lds Trg; H. V. Schwartz, O S; J. Schwarzkopf, A 1 C; W. Scott, O S; C. D. Shine, A 2 C; F. J. Shirm, B M 1 C; J. F. Simmermann, A 1 C; W. F. Simmons, O S; Ah Sing, M Att 3 C; W. A. Smith, Q M 3 C; R. D. Smith, O S; J. A. Smith, O S; P. F. Sokolowski, G M 2 C; A. Sorensen, Ch Q M; W. E. Spalding, A 1 C; J. O. Spurr, O

(Continued on page 3.)