

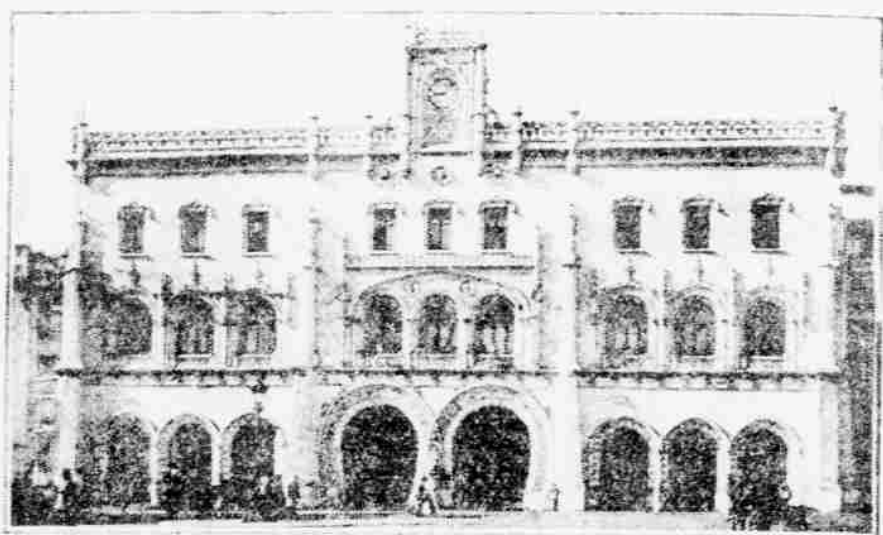
GRAPHIC ACCOUNT OF REVOLUTION

Desperate Street Fighting Follows the Initial Attack on the Royal Palace.

ARTILLERY JOINS REBELS

Mutiny on Ships and Raising of Republican Flags Enthusie Revolutionists.

Lisbon, October 17.—A graphic account of the revolution in Lisbon is given by the following dispatches from the city. The revolution broke out on the morning of the 10th inst. and has since that time been progressing with great rapidity. The rebels have taken possession of the city and the royal palace. The king has fled to the north and the rebels have declared the republic. The revolution is now in its third day and the rebels are still in possession of the city. The king has fled to the north and the rebels have declared the republic. The revolution is now in its third day and the rebels are still in possession of the city.



CENTRAL RAILROAD STATION, LISBON

The rebels have taken possession of the city and the royal palace. The king has fled to the north and the rebels have declared the republic. The revolution is now in its third day and the rebels are still in possession of the city. The king has fled to the north and the rebels have declared the republic. The revolution is now in its third day and the rebels are still in possession of the city.

The rebels have taken possession of the city and the royal palace. The king has fled to the north and the rebels have declared the republic. The revolution is now in its third day and the rebels are still in possession of the city. The king has fled to the north and the rebels have declared the republic. The revolution is now in its third day and the rebels are still in possession of the city.

The rebels have taken possession of the city and the royal palace. The king has fled to the north and the rebels have declared the republic. The revolution is now in its third day and the rebels are still in possession of the city. The king has fled to the north and the rebels have declared the republic. The revolution is now in its third day and the rebels are still in possession of the city.



HOTEL AVENIDA PALACE

The rebels have taken possession of the city and the royal palace. The king has fled to the north and the rebels have declared the republic. The revolution is now in its third day and the rebels are still in possession of the city. The king has fled to the north and the rebels have declared the republic. The revolution is now in its third day and the rebels are still in possession of the city.

The rebels have taken possession of the city and the royal palace. The king has fled to the north and the rebels have declared the republic. The revolution is now in its third day and the rebels are still in possession of the city. The king has fled to the north and the rebels have declared the republic. The revolution is now in its third day and the rebels are still in possession of the city.

The rebels have taken possession of the city and the royal palace. The king has fled to the north and the rebels have declared the republic. The revolution is now in its third day and the rebels are still in possession of the city. The king has fled to the north and the rebels have declared the republic. The revolution is now in its third day and the rebels are still in possession of the city.

CLEANING HATS

We believe the patrons of the Hat Cleaning Department of this establishment will bear us out in the statement that the most expert handler of soiled hats is with us.

Panama Hats that appear to have been under the road roller when brought in for repairs go back to the customer as shapely and clean as when they originally left this store. The fee for cleaning and repairing a Panama or Straw Hat is small and the satisfaction in having one to which you are accustomed and which is shaped to your head is not to be measured in dollars.

Commissions of this character are promptly attended to and hats returned to residences. We solicit your patronage for this department with the assurance that the work will be well done.

M. McInerny, Ltd.

Fort and Merchant Streets.

Try Your Hand at a Catchy Phrase

The Republican Publicity Bureau offer prizes of

\$10, \$5 and \$2.50

for the three best epigrammatic, alliterative or catchy phrase or sentence for campaign purposes.

Get to work and have your copy in their office before 5 o'clock Monday afternoon and get a prize.

A committee of three will pass on all copy. The right is reserved to use any ideas in any copy submitted.

Republican Publicity Bureau

A. L. C. ATKINSON,

Chairman.

Third Floor Judd Building

WATSON SHIFTS HIS
OIL HEADQUARTERS

C. BREWER & COMPANY, LTD.

AGENTS FOR THE
General Insurance Co. of Liverpool, Eng.
The London Assurance Corporation,
The London & Lancashire Assurance Co., Ltd.
The London & Lancashire Assurance Co., Ltd.
The London & Lancashire Assurance Co., Ltd.
The London & Lancashire Assurance Co., Ltd.

C. BREWER & CO., LTD.

Sugar Producers and Commission mer-
chants.
OFFICERS AND DIRECTORS:
E. F. BISHOP, President
J. H. ROBERTSON, Vice-President and Manager
W. W. NORTH, Treasurer
R. H. IYER, Secretary
J. B. GALT, Auditor
T. H. CARTER, Director
R. A. COOK, Director
A. GARTLEY, Director

Elite Laundry

W. D. MCINTYRE, Superintendent
Phone 1973

For Rent

FOLDING CHAIRS AND TABLES
J. HOPP & COMPANY, LTD.
SPECIALISTS.