

TELESHIP OREGON FIGHTS FURY OF STORM

Will Discharge Ammunition at Mare Island and Then Go North to Go Out of Commission

The battleship Oregon came into port yesterday afternoon, after a stay in Asiatic waters of three years and a half. As she came through the Golden Gate the homeward bound pennant was floating gaily to the breeze from her mainmast. Just as she was approaching the canal on Saturday she ran into a terrific storm. The waves washed the deck and tore the port lifeboat from its lashings and swept it overboard into the setting waters. The boat was later picked up and hauled on board the battleship after much difficulty.

The Oregon was fifty-one days from Manila and eight days from Honolulu. She will remain in the bay here for several days, and will then proceed to Mare Island, where her ammunition will be discharged. She will then go north to the naval academy at Annapolis.

The Oregon is the pride of the navy. She was built for the navy and is the only battleship in the world which has been practically all the time in Asiatic waters, with the exception of making a run to Honolulu. The beautiful pennant, which is 580 feet long, and the ship's flags, which are all of the finest silk, were purchased in Japan by the crew of the Oregon and presented to the battleship. They will continue to float from the vessel until she goes out of commission, and will then be sent to the naval academy to grace the walls of that institution.

The Oregon has the proud distinction of carrying the battleship trophy for excellence of gunnery. She won this for the years 1904 and 1905. The trophy, which is a handsome piece of bronze plate, is attached to the iron plate just outside the commanding officer's cabin.

Captain J. P. Merrill, who is in command of the Oregon, says that she is the finest ship in the navy and that she will continue to float from the vessel until she goes out of commission, and will then be sent to the naval academy to grace the walls of that institution.

The Oregon has the proud distinction of carrying the battleship trophy for excellence of gunnery. She won this for the years 1904 and 1905. The trophy, which is a handsome piece of bronze plate, is attached to the iron plate just outside the commanding officer's cabin.

The Oregon has the proud distinction of carrying the battleship trophy for excellence of gunnery. She won this for the years 1904 and 1905. The trophy, which is a handsome piece of bronze plate, is attached to the iron plate just outside the commanding officer's cabin.

The Oregon has the proud distinction of carrying the battleship trophy for excellence of gunnery. She won this for the years 1904 and 1905. The trophy, which is a handsome piece of bronze plate, is attached to the iron plate just outside the commanding officer's cabin.

The Oregon has the proud distinction of carrying the battleship trophy for excellence of gunnery. She won this for the years 1904 and 1905. The trophy, which is a handsome piece of bronze plate, is attached to the iron plate just outside the commanding officer's cabin.

The Oregon has the proud distinction of carrying the battleship trophy for excellence of gunnery. She won this for the years 1904 and 1905. The trophy, which is a handsome piece of bronze plate, is attached to the iron plate just outside the commanding officer's cabin.

The Oregon has the proud distinction of carrying the battleship trophy for excellence of gunnery. She won this for the years 1904 and 1905. The trophy, which is a handsome piece of bronze plate, is attached to the iron plate just outside the commanding officer's cabin.

The Oregon has the proud distinction of carrying the battleship trophy for excellence of gunnery. She won this for the years 1904 and 1905. The trophy, which is a handsome piece of bronze plate, is attached to the iron plate just outside the commanding officer's cabin.

The Oregon has the proud distinction of carrying the battleship trophy for excellence of gunnery. She won this for the years 1904 and 1905. The trophy, which is a handsome piece of bronze plate, is attached to the iron plate just outside the commanding officer's cabin.

The Oregon has the proud distinction of carrying the battleship trophy for excellence of gunnery. She won this for the years 1904 and 1905. The trophy, which is a handsome piece of bronze plate, is attached to the iron plate just outside the commanding officer's cabin.

The Oregon has the proud distinction of carrying the battleship trophy for excellence of gunnery. She won this for the years 1904 and 1905. The trophy, which is a handsome piece of bronze plate, is attached to the iron plate just outside the commanding officer's cabin.

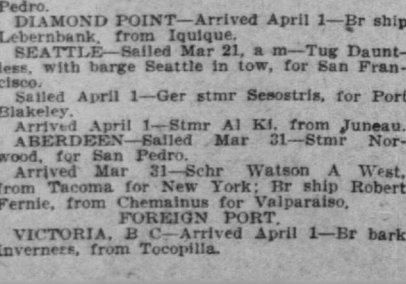
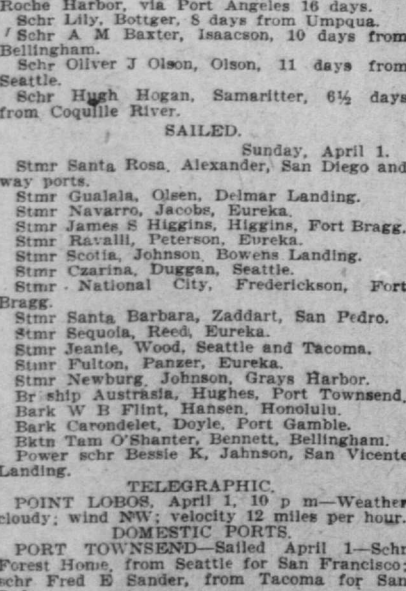
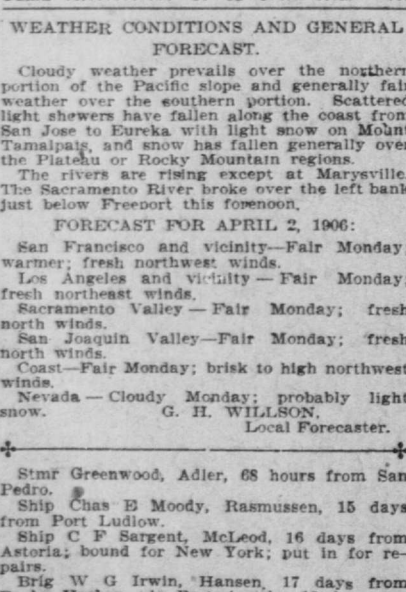
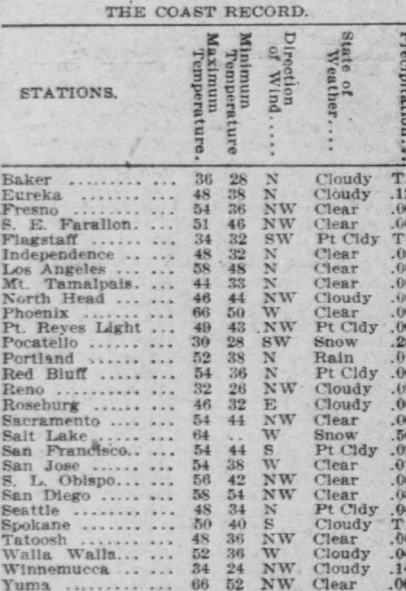
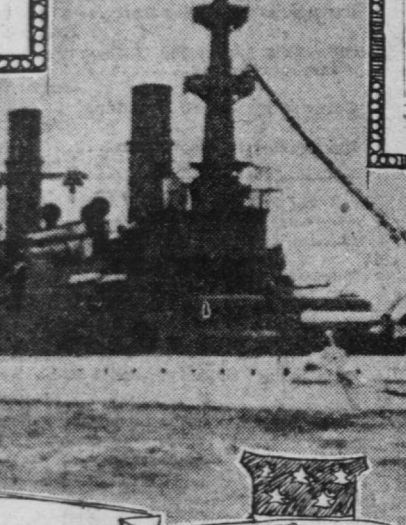
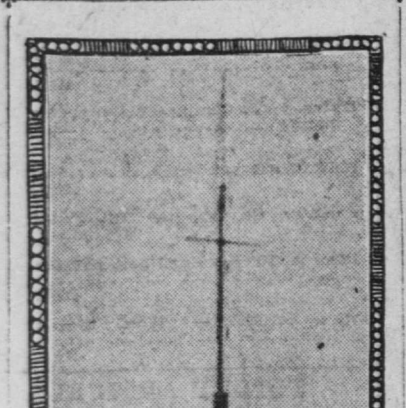
The Oregon has the proud distinction of carrying the battleship trophy for excellence of gunnery. She won this for the years 1904 and 1905. The trophy, which is a handsome piece of bronze plate, is attached to the iron plate just outside the commanding officer's cabin.

The Oregon has the proud distinction of carrying the battleship trophy for excellence of gunnery. She won this for the years 1904 and 1905. The trophy, which is a handsome piece of bronze plate, is attached to the iron plate just outside the commanding officer's cabin.

The Oregon has the proud distinction of carrying the battleship trophy for excellence of gunnery. She won this for the years 1904 and 1905. The trophy, which is a handsome piece of bronze plate, is attached to the iron plate just outside the commanding officer's cabin.

The Oregon has the proud distinction of carrying the battleship trophy for excellence of gunnery. She won this for the years 1904 and 1905. The trophy, which is a handsome piece of bronze plate, is attached to the iron plate just outside the commanding officer's cabin.

The Oregon has the proud distinction of carrying the battleship trophy for excellence of gunnery. She won this for the years 1904 and 1905. The trophy, which is a handsome piece of bronze plate, is attached to the iron plate just outside the commanding officer's cabin.



hence Mar 8; str. Chehalis, hence Mar 28. TATOOSH—Passed out April 1—Str. Har- do, hence Mar 28; str. Chehalis, hence Mar 28. TATOOSH—Passed out April 1—Str. Har- do, hence Mar 28; str. Chehalis, hence Mar 28.

Passed in April 1—Str. Inca, from Callao for Port Townsend; Ger. str. Ituri, hence Mar 29 for Seattle and Tacoma; str. Geo. Loomis, hence Mar 28 for Seattle.

Passed out April 1—Dredger Seattle, in tow of tug Dauntless, from Seattle for San Francisco. SANTA BARBARA—Arrived April 1—Str. Coos Bay, hence Mar 30. Sailed April 1—Str. Coos Bay, for San Pedro.

Arrived April 1—Str. State of California, from San Diego. Sailed April 1—Str. State of California, for San Francisco. Sailed April 1—Str. North Bend, from Coos Bay.

Sailed April 1—J. M. Griffith and str. Meteor, for Port Hadlock. EUREKA—Sailed April 1—Str. Roanoke, from San Pedro via San Francisco, hence Mar 31; str. Roanoke, from Portland for San Pedro.

CLALLAM BAY—In port—Bark Gatherer, hence Mar 8; str. Chehalis, hence Mar 28. TATOOSH—Passed out April 1—Str. Har- do, hence Mar 28; str. Chehalis, hence Mar 28.

Passed in April 1—Str. Inca, from Callao for Port Townsend; Ger. str. Ituri, hence Mar 29 for Seattle and Tacoma; str. Geo. Loomis, hence Mar 28 for Seattle. Passed out April 1—Dredger Seattle, in tow of tug Dauntless, from Seattle for San Francisco. SANTA BARBARA—Arrived April 1—Str. Coos Bay, hence Mar 30. Sailed April 1—Str. Coos Bay, for San Pedro.

Arrived April 1—Str. State of California, from San Diego. Sailed April 1—Str. State of California, for San Francisco. Sailed April 1—Str. North Bend, from Coos Bay. Sailed April 1—J. M. Griffith and str. Meteor, for Port Hadlock. EUREKA—Sailed April 1—Str. Roanoke, from San Pedro via San Francisco, hence Mar 31; str. Roanoke, from Portland for San Pedro.

CLALLAM BAY—In port—Bark Gatherer, hence Mar 8; str. Chehalis, hence Mar 28. TATOOSH—Passed out April 1—Str. Har- do, hence Mar 28; str. Chehalis, hence Mar 28. TATOOSH—Passed out April 1—Str. Har- do, hence Mar 28; str. Chehalis, hence Mar 28.

Passed in April 1—Str. Inca, from Callao for Port Townsend; Ger. str. Ituri, hence Mar 29 for Seattle and Tacoma; str. Geo. Loomis, hence Mar 28 for Seattle. Passed out April 1—Dredger Seattle, in tow of tug Dauntless, from Seattle for San Francisco. SANTA BARBARA—Arrived April 1—Str. Coos Bay, hence Mar 30. Sailed April 1—Str. Coos Bay, for San Pedro.

Arrived April 1—Str. State of California, from San Diego. Sailed April 1—Str. State of California, for San Francisco. Sailed April 1—Str. North Bend, from Coos Bay. Sailed April 1—J. M. Griffith and str. Meteor, for Port Hadlock. EUREKA—Sailed April 1—Str. Roanoke, from San Pedro via San Francisco, hence Mar 31; str. Roanoke, from Portland for San Pedro.

Ship C. F. Sargent, Bound From Astoria to New York, Runs Into Terrible Storm VESSEL STARTS LEAKING Cargo Shifts, Deck Planks Are Started and Crew Refuses to Proceed Further

The American ship C. F. Sargent put into this port yesterday in a badly demoralized condition. She was leaking, her cargo had shifted, the planking of her decks had started and the forward bits which hold the mainmast stays had been carried away.

The Sargent left Astoria with a cargo of 1,300 tons of lumber. On March 19, when in latitude 44.30 north and longitude 130 west, she encountered a terrific hurricane. The storm raged with tremendous fury for twelve hours. Great seas came crashing on the vessel, while the cargo shifted and the planking of the decks started.

The Sargent left Astoria with a cargo of 1,300 tons of lumber. On March 19, when in latitude 44.30 north and longitude 130 west, she encountered a terrific hurricane. The storm raged with tremendous fury for twelve hours. Great seas came crashing on the vessel, while the cargo shifted and the planking of the decks started.

The Sargent left Astoria with a cargo of 1,300 tons of lumber. On March 19, when in latitude 44.30 north and longitude 130 west, she encountered a terrific hurricane. The storm raged with tremendous fury for twelve hours. Great seas came crashing on the vessel, while the cargo shifted and the planking of the decks started.

The Sargent left Astoria with a cargo of 1,300 tons of lumber. On March 19, when in latitude 44.30 north and longitude 130 west, she encountered a terrific hurricane. The storm raged with tremendous fury for twelve hours. Great seas came crashing on the vessel, while the cargo shifted and the planking of the decks started.

The Sargent left Astoria with a cargo of 1,300 tons of lumber. On March 19, when in latitude 44.30 north and longitude 130 west, she encountered a terrific hurricane. The storm raged with tremendous fury for twelve hours. Great seas came crashing on the vessel, while the cargo shifted and the planking of the decks started.

The Sargent left Astoria with a cargo of 1,300 tons of lumber. On March 19, when in latitude 44.30 north and longitude 130 west, she encountered a terrific hurricane. The storm raged with tremendous fury for twelve hours. Great seas came crashing on the vessel, while the cargo shifted and the planking of the decks started.

The Sargent left Astoria with a cargo of 1,300 tons of lumber. On March 19, when in latitude 44.30 north and longitude 130 west, she encountered a terrific hurricane. The storm raged with tremendous fury for twelve hours. Great seas came crashing on the vessel, while the cargo shifted and the planking of the decks started.

The Sargent left Astoria with a cargo of 1,300 tons of lumber. On March 19, when in latitude 44.30 north and longitude 130 west, she encountered a terrific hurricane. The storm raged with tremendous fury for twelve hours. Great seas came crashing on the vessel, while the cargo shifted and the planking of the decks started.

The Sargent left Astoria with a cargo of 1,300 tons of lumber. On March 19, when in latitude 44.30 north and longitude 130 west, she encountered a terrific hurricane. The storm raged with tremendous fury for twelve hours. Great seas came crashing on the vessel, while the cargo shifted and the planking of the decks started.

WILL BE USED IN CALIFORNIA'S DISTRICTS HORRIBLE PRODUCTS Vast Deposits of Low Grade Copper to Be Utilized by Mountain Copper Company at Keswick.

Calaveras County mining enterprises are about to extend their field. In the West Point district a good season is expected. Numerous small mines give employment to all who desire to work. The Calaveras Prospect reports that the Galena mine at Volcano, together with several ledges close to West Point, are attracting a great share of attention.

The Galena mine is working on eight-hour shifts and the development will be extended. At the Volcano mine a large body of ore has been struck, according to reports. Twenty-five men are constantly employed. The rainfall has amounted to 33 inches at West Point, which insures an ample water supply for the mines.

The Galena mine is working on eight-hour shifts and the development will be extended. At the Volcano mine a large body of ore has been struck, according to reports. Twenty-five men are constantly employed. The rainfall has amounted to 33 inches at West Point, which insures an ample water supply for the mines.

The Galena mine is working on eight-hour shifts and the development will be extended. At the Volcano mine a large body of ore has been struck, according to reports. Twenty-five men are constantly employed. The rainfall has amounted to 33 inches at West Point, which insures an ample water supply for the mines.

The Galena mine is working on eight-hour shifts and the development will be extended. At the Volcano mine a large body of ore has been struck, according to reports. Twenty-five men are constantly employed. The rainfall has amounted to 33 inches at West Point, which insures an ample water supply for the mines.

The Galena mine is working on eight-hour shifts and the development will be extended. At the Volcano mine a large body of ore has been struck, according to reports. Twenty-five men are constantly employed. The rainfall has amounted to 33 inches at West Point, which insures an ample water supply for the mines.

The Galena mine is working on eight-hour shifts and the development will be extended. At the Volcano mine a large body of ore has been struck, according to reports. Twenty-five men are constantly employed. The rainfall has amounted to 33 inches at West Point, which insures an ample water supply for the mines.

The Galena mine is working on eight-hour shifts and the development will be extended. At the Volcano mine a large body of ore has been struck, according to reports. Twenty-five men are constantly employed. The rainfall has amounted to 33 inches at West Point, which insures an ample water supply for the mines.

The Galena mine is working on eight-hour shifts and the development will be extended. At the Volcano mine a large body of ore has been struck, according to reports. Twenty-five men are constantly employed. The rainfall has amounted to 33 inches at West Point, which insures an ample water supply for the mines.

The Galena mine is working on eight-hour shifts and the development will be extended. At the Volcano mine a large body of ore has been struck, according to reports. Twenty-five men are constantly employed. The rainfall has amounted to 33 inches at West Point, which insures an ample water supply for the mines.

ing to the Oregon Mining Journal. A blismuth mine also exists northwest of Ashland.

The blismuth mine also exists northwest of Ashland. The blismuth mine also exists northwest of Ashland. The blismuth mine also exists northwest of Ashland.

The blismuth mine also exists northwest of Ashland. The blismuth mine also exists northwest of Ashland. The blismuth mine also exists northwest of Ashland.

The blismuth mine also exists northwest of Ashland. The blismuth mine also exists northwest of Ashland. The blismuth mine also exists northwest of Ashland.

The blismuth mine also exists northwest of Ashland. The blismuth mine also exists northwest of Ashland. The blismuth mine also exists northwest of Ashland.

The blismuth mine also exists northwest of Ashland. The blismuth mine also exists northwest of Ashland. The blismuth mine also exists northwest of Ashland.

The blismuth mine also exists northwest of Ashland. The blismuth mine also exists northwest of Ashland. The blismuth mine also exists northwest of Ashland.

The blismuth mine also exists northwest of Ashland. The blismuth mine also exists northwest of Ashland. The blismuth mine also exists northwest of Ashland.

The blismuth mine also exists northwest of Ashland. The blismuth mine also exists northwest of Ashland. The blismuth mine also exists northwest of Ashland.

The blismuth mine also exists northwest of Ashland. The blismuth mine also exists northwest of Ashland. The blismuth mine also exists northwest of Ashland.

OUR FEE \$7.50

TO BE PAID WHEN CURED.

Consult the Doctors WHO CURE MEN Quickly and Permanently.

We Cure Contracted Diseases in a Week

We treat successfully all private diseases and chronic diseases of men: blood, stomach, heart, liver, kidney and prostatic troubles. We cure BLOOD POISON (without mercury) to rid the system of all venereal diseases. We remove STRICTURE, without operation or pain, in 15 days. We stop drains, losses and spermatorrhea by a new method in a short time. We can restore the vigor of any man under 50. OUR SPECIAL TREATMENT.

If you cannot call, write for symptom blanks. CONSULTATION FREE.

DR. HOLSMAN & CO.
Hours: 8 to 5, 7 to 8:30 p. m. daily. Sun- day, 9 to 12.
720 MARKET ST. (Top Floor), S. F.

VISIT DR. JORDAN'S GREAT MUSEUM OF ANATOMY

1011 MARKET ST. (Opp. Market & 7th St.)

The Largest Anatomical Museum in the World. Anatomical and surgical specimens of all kinds. Human skeletons, bones, muscles, nerves, and organs. Also, a large collection of pathological specimens. Admission free. Open daily from 10 a. m. to 5 p. m.

Dr. Gibbon

Specialist in all diseases of men. 1011 Market St., San Francisco. Hours: 10 a. m. to 5 p. m. Daily. Sun- day, 9 a. m. to 12 p. m.

Weak Men and Women

SHOULD USE DAMIANA REMEDY. THE Great Medical Remedy gives health and strength to sexual organs. 1011 Market St., San Francisco. Hours: 10 a. m. to 5 p. m. Daily. Sun- day, 9 a. m. to 12 p. m.

PROPOSALS

SALE of old material at the Navy Yard, Mare Island, Cal. Material belonging to the navy, condemned as unfit for use, consisting of scrap iron, brass, copper, tin, lead, zinc, and other metals. Also, a large quantity of old clothing, shoes, and other articles. The sale will be held at the Navy Yard, Mare Island, Cal., on Monday, April 2, 1906, at 10 a. m.

OCEAN TRAVEL

Steamers leave Piers 9 and 11, San Francisco.

For Ketchikan, Wrangell, Juneau, Duvall, Haines, Skagway, etc., Alaska—11 a. m., Apr. 10, 12, 15, 20, 25, 30. For Seattle, Tacoma, Portland, etc.—10 a. m., Apr. 10, 12, 15, 20, 25, 30. For San Francisco, etc.—10 a. m., Apr. 10, 12, 15, 20, 25, 30.

OLD SOLDIER FOUND DEAD

IN CITY OF SAN DIEGO

Remains of James Weldon Discovered on Tide Lands and Money Is Missing.

SAN DIEGO, April 1.—Early this morning the body of James Weldon, member of the Soldiers' Home at Sante, who was spending a furlough in San Diego, was found on the tide lands of the bay, between Twenty-first and Twenty-second streets. The body was discovered by F. A. Whitney, who immediately notified the police. The body was found lying on its back, with its arms outstretched. The face was pale and the eyes were closed. The body was found in a shallow pool of water. The police are investigating the case.

LABOR ORGANIZATION SEEKING INFORMATION ABOUT JUDGES

Asks for Data Showing Stands Taken by Jurists in Cases Involving Unions.

VALLEJO, April 1.—The California State Federation of Labor is after the scalps of the Superior Judges of this State who have sanctioned the use of injunctions in labor troubles. The federation has addressed a communication to all of the affiliated bodies asking for information upon the decisions rendered by the Superior Judges throughout the State in labor controversies and the date of the expiration of the terms of the unfriendly orders. Judge Harris, who was only recently appointed to the Superior Court bench in this county, to succeed Judge Buckles, who went to the Appellate Court, has not as yet rendered a decision on a labor dispute.

POLICE RECOVER LITTLE ONES TAKEN FROM AN INSTITUTION

Offspring of Divorced Father Found in Petaluma Where They Had Been Placed by Mother.

PETALUMA, April 1.—Detective Sergeant Charles H. Taylor and an official of the San Francisco Society for the Prevention of Cruelty to Children went to Petaluma, Cal., and brought back to San Francisco two children who had been taken from an institution and placed in the custody of their mother. The children were found in a small room in a boarding house. The mother was arrested and charged with neglect. The children are being cared for by the Society for the Prevention of Cruelty to Children.

PLANNING BIG POWER LINE FROM CORDELLA TO VALLEJO

Corporation Getting Ready to Improve Plant Which Supplies the Government Yard.

VALLEJO, April 1.—The California Gas and Electric Company is planning a big power line to supply this city and the Government shops on Mare Island direct from its present trunk system at Cordella. A big force of men is now being assembled and material is being brought in from Cordella and other points. The job will cost many thousands of dollars and will require two months to complete.