

# INDUSTRIAL SECTION

Devoted to the Development of  
PROWERS COUNTY COLORADO

An Empire of Undeveloped Irrigated Agricultural Wealth, in the  
Lower Arkansas Valley, Colorado

**200,000 ACRES NOW UNDER IRRIGATION**

**260 Miles of Main Canals and Storage Reservoirs**

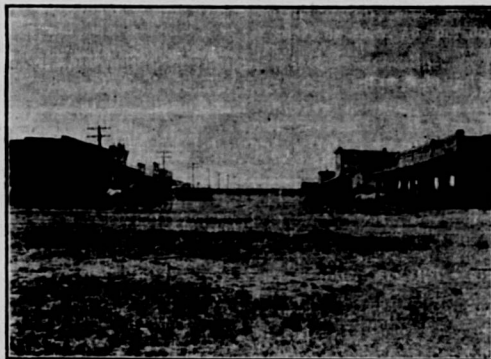
*The Land is Young. Opportunity Beckons You to Industry and Profit. Insure your  
Future Success and Contentment with a 40 acre farm  
in this Rich Prosperous Valley*

## **Incorporated and Banking Towns in Prowers Co.**

### **Population.**

|         |       |       |
|---------|-------|-------|
| Lamar   | ..... | 5,000 |
| Holly   | ..... | 2,000 |
| Wiley   | ..... | 600   |
| Granada | ..... | 500   |
| Hartman | ..... | 500   |
| Bristol | ..... | 400   |

All on railroad and enjoy  
exceptional commercial and  
social advantages.



Street Scenes, Hartman, Colorado



The Hartman Alfalfa Meal Mill

**COUNTY SEAT**

**PROWERS COUNTY**

**LAMAR, COLORADO**

**THE METROPOLIS**

**POPULATION 5,000**

**ELEVATION 3,700**

*The Irrigated Area in the Trade Territory Tributary to Lamar is the Largest  
in the Great West.*

Lamar is situated on the Main Line of the Santa Fe R. R.,  
500 miles west from Kansas City and 250 miles east from Den-  
ver.

Lamar regales in her "Colorado Climate" and in her civic  
and commercial attainments.

Lamar occupies a first position among Colorado's rapidly  
growing towns as may be seen from these principal enterprises.

Post Office of the 2nd class, City delivery and Free Rural  
delivery.

Eight Churches, Carnegie Library, High School and Public  
Schools.

Lodges—Masonic, I. O. O. F. and K. of P.

3 Banks, Aggregating 3-4 million dollar deposits.

The American Beet Sugar Co. Factory—Capacity 600 tons  
daily.

Flour Mill, 600 bbls. daily (Second largest in the State)

U. S. Land Office, Adequate Water Works, Sewer System,  
Electric Lights, Power and Steam Heating Plant, Ice Plant,  
Auto Fire Wagon, Steam Laundry, 15 miles of Concrete sidewalks  
3 Weekly and 1 Daily Papers.

*For General Information and Literature address,*

**The Lamar Commercial Club**

**E. H. Gerecke, Secretary, Lamar, Colorado.**