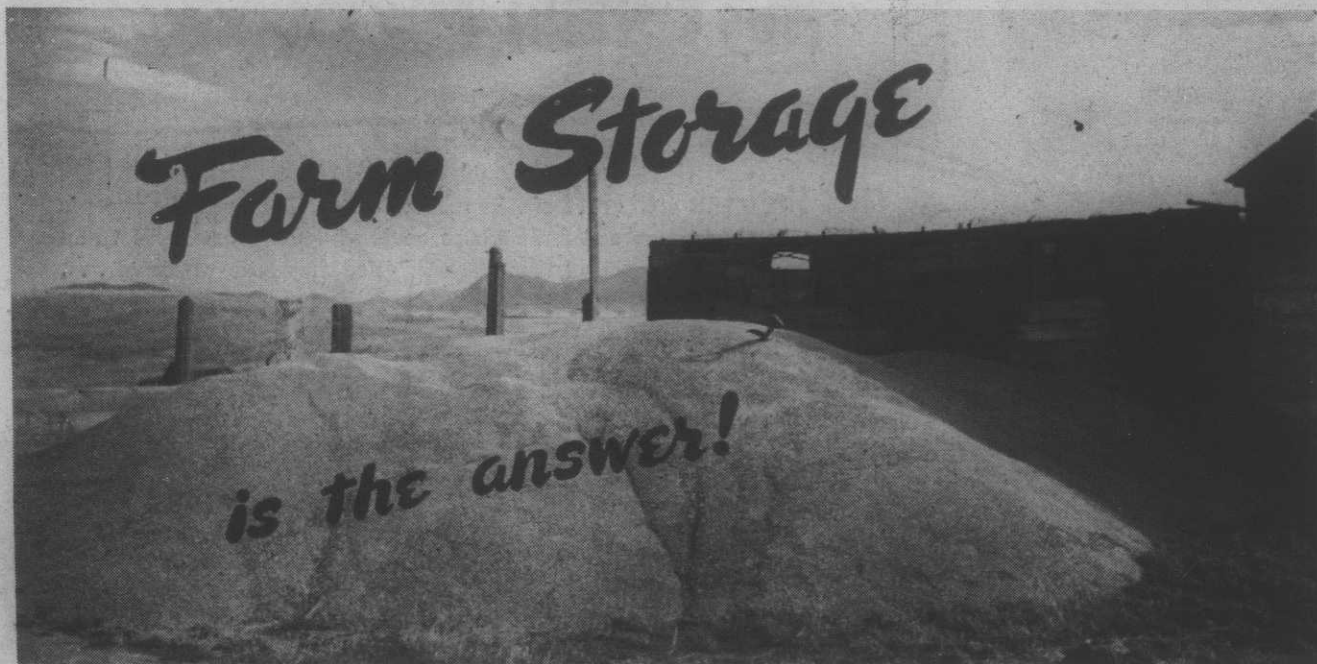


# MONTANA Farmer-Stockman

HISTORICAL SOCIETY  
OF MONTANA  
Feb. 1952



By BRUCE BROOKS, Montana Extension Service

LAYTON S. THOMPSON, Montana Agricultural Experiment Station

- Elevators can't handle grain as fast as it can be harvested
- Cars couldn't move grain even if there were enough
- Wheat in the bin is better than money in the bank
- Grain can be sorted for higher protein premiums
- Grain can be held to equalize annual incomes
- Grain can be held for higher prices
- Grain can be held for loans

"MY STORAGE space is the best investment I have on the place." This is the response of several farmers recently to the question, "Does it pay to build storage?"

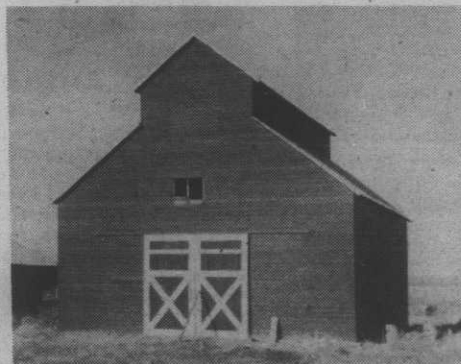
They gave several reasons for their enthusiasm concerning farm storage. Foremost is that with most farms now equipped with combines, the elevators simply can't handle the grain as fast as it is harvested. In many Montana towns, two or three days of good harvesting weather will fill up all the available elevator space.

There is some tendency to blame the congestion of elevators on unsatisfactory distribution of railroad cars. There may be room for improvement in car distribution, but we may as well face it—there just aren't going to be enough railroad cars to move a good grain crop as fast as it can now be harvested. Elevator men say that even if the grain could be loaded into cars, there aren't enough facilities at terminal points to handle it as fast as it now comes in.

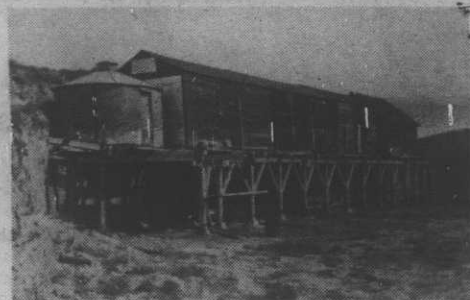
The answer seems to be for the farmer to provide plenty of good farm storage facilities. Of course, grain can be piled on the ground some years with very little loss in Montana. (Please turn to page 16)



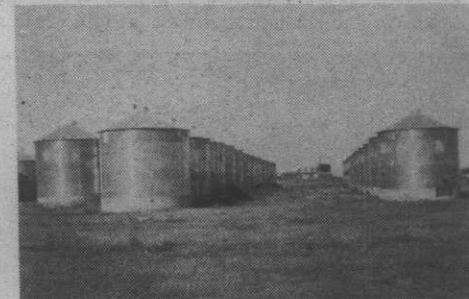
This quonset type building near Forsyth provides maximum grain storage space plus year-around use as machine shed and shop.



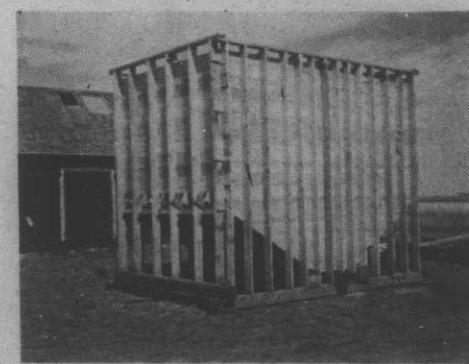
An excellent type of farm storage seen in the Shelby area. (Montana Extension service photos)



These grain bins near Forsyth are arranged to take advantage of gravity for both filling and emptying.



Popular for farm storage are metal bins such as these used for the Commodity Credit Corp. unit at Conrad.



A grain dryer bin in the Stanford area. Sloping floor, perforated, is faced into the prevailing breeze.

COVERS MONTANA AND NORTHERN WYOMING