

# ANOTHER REVOLT IN BLOODY RUSSIA

Western Siberian Peasants Rebel  
and Take Omsk, Tomsk.

## SOVIETS ARE OVERTHROWN

Rebellion Against Reds Spreads as  
Tribesmen Are Joined by Cossacks  
Who Furnish Competent Lead-  
ers—Russ Show Resistance.

Harbin, Aug. 30.—Western Siberian peasants have overthrown the soviets at Tomsk, Novonikolayevsk, Omsk, Barnaul and other important towns, it is reported here from reliable sources. Isolated peasant uprisings which have been in progress since spring appeared to have culminated in a general insurrection. This was led by an uprising of the Kirghiz tribesmen, which followed the withdrawal of the bolshevik troops, presumably for the Polish front.

**Aided by Cossacks.**  
The tribesmen were joined by Cossacks and detachments of anti-bolshevik troops, which furnished them competent leadership. This force marched on the more important centers, but found them already in the hands of insurgents.

Two thousand Russian officers released from bolshevik prisons also are said to have joined the new anti-bolshevik forces.

The insurgent movement is reported to be spreading. Outbreaks are already frequent in the far East, where it is expected the soviet regime will soon fall.

Eastern Siberian authorities are dazed by the suddenness of the new developments. The main support of the uprising appears to come from the mujik farmers of the provinces of Altai, Tomsk, Tobolsk, Semipalatinsk and Akmolinsk, which are the richest farming districts of Siberia.

**Russ Make Stand.**  
London, Aug. 30.—Russian resistance in the area east of Brest-Litovsk is continuing, a dispatch from Warsaw said. The bolsheviks also have stiffened their lines east and north of Grodno, apparently working from a northern base at Vilna.

Prince Sapieha, the Polish foreign minister, is at Brest-Litovsk for a conference with M. Dombiski, head of the Polish delegation at Minsk. They will determine the place to which the peace parleys will be transferred and the prince will fully acquaint the head of the delegation with the present stand of the government on peace terms.

Since the parley started at Minsk the communication of the delegation with Warsaw has been very inadequate. No couriers have been able to get through the lines and the wireless messages were infrequent and garbled.

**Beware Reds, Weygand Warns.**  
Paris, Aug. 30.—The bolsheviks will recover from their military defeat within six months.

Unless internal upsets take place within Russia the nations of western Europe will have to be on their guard throughout the winter—that is, provided a general peace is not arrived at.

The above is from Gen. Maxime Weygand, the French military leader, generally credited with being the brains of the defense of Warsaw and the Polish counter-offensive.

He declared it would be a grave mistake to think that the disaster to the reds was irretrievable.

## YANKS IN SEWING CONTEST

Needlework of Wounded Heroes to Be  
Shown at Kentucky  
State Fair.

Louisville, Ky., Aug. 31.—Wounded soldiers who become dexterous with the needle while recuperating in hospitals will compete with women in an exhibition of fancy sewing at the Kentucky state fair, opening here September 16. This will be the first time men have entered this event in Kentucky. Embroidered and knitted piece and woven towels, rugs, lamp shades and posters will be among the articles submitted by the former soldiers.

## USE OF "GAS" JUMPS 32 PCT.

Production in U. S. Increases 13 Per  
Cent and Stocks Fall Off  
15 Per Cent.

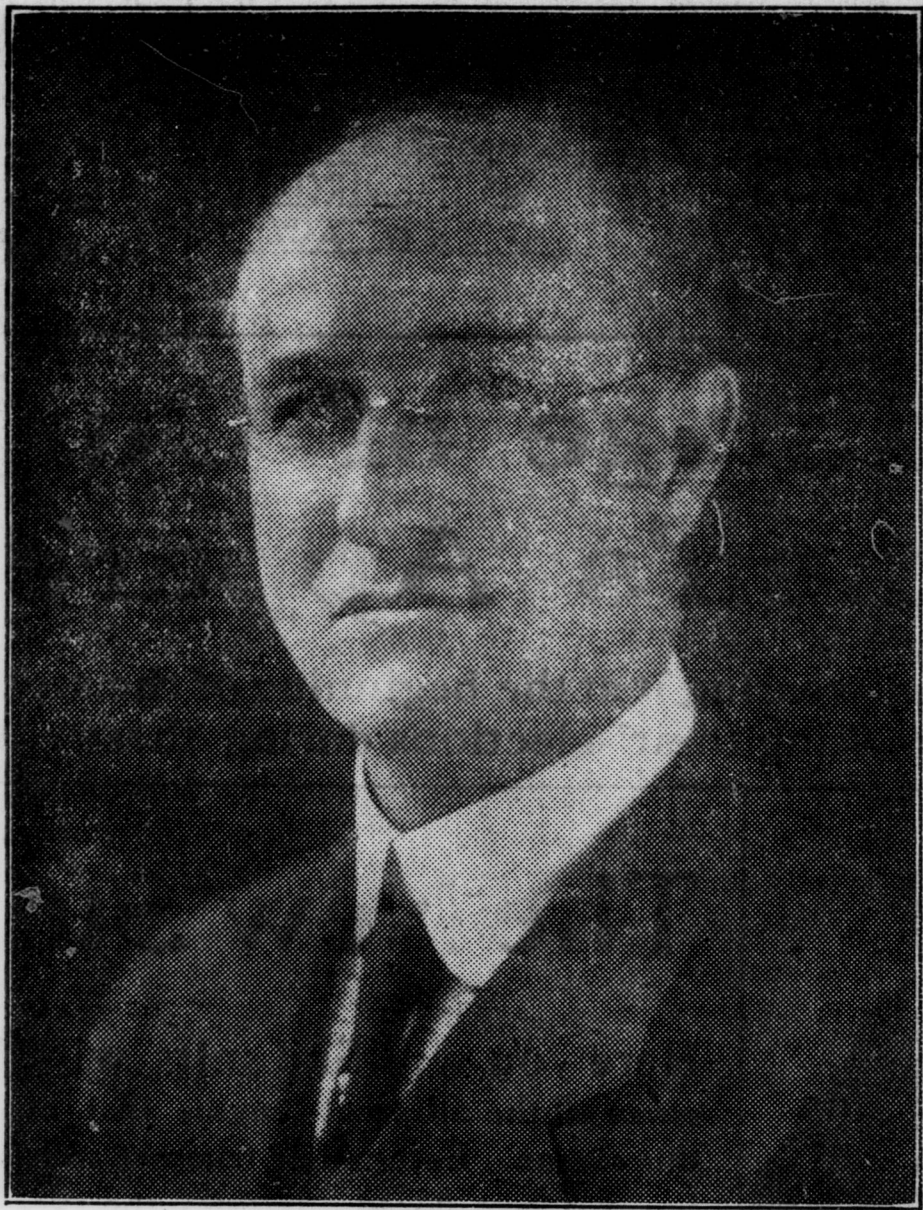
Washington, Aug. 30.—Although production of gasoline for the first six months of this year was 13 per cent greater than in the corresponding period of 1919, the increase in consumption was 32 per cent, it was reported by the bureau of mines. Gasoline stocks at the end of June were 89,841,000 gallons, or 15 per cent less than the amount on hand June 30, 1919.

## TO READJUST GRAIN RATES

Interstate Commission Orders Increase  
of 30 Per Cent on Domestic  
Rates.

Washington, Aug. 26.—Readjustment of rates on grain between Chicago and the Atlantic seaboard was ordered by the interstate commerce commission on the basis of 30 per cent increase in domestic rates and 25 per cent in export rates instead of the 40 per cent authorized in the recent increase allowed by the commission.

(Authorized and published by Alexander E. Matheson, Janesville.)



Janesville, Wisconsin.

August 16, 1920.

Voters and Citizens.

While I was outside of the State a number of citizens brought me into the political field as Republican candidate for Assemblyman for the First District of Rock County. This effort was not only made in my absence, but my first knowledge of it came to me upon my return home.

Such a call to public service was in a high degree complimentary and entitled to more than ordinary consideration.

Now that I am in the race, I am in to win.

There is a place for service in the Legislature, as elsewhere, in these days of unrest. I am strongly convinced that every person should make a special effort to render the largest social service, especially in this period of readjustment.

I have not, and shall not have, any alliance, political or otherwise. I have not now, and do not expect to have, any enemies to punish. If elected, as a public official I shall have no friends to reward at public expense. As to all matters that may be presented for consideration to the Legislature, I as a member, would be as independent as it is possible for any American citizen to be.

I am not, and shall not be, a special representative of any group or class. I want to speak for all classes, the working man, the man-

ger, the superintendent, the executive, the clerk, the individual who furnishes capital, the farmer, the mechanic, the banker, the merchant, the manufacturer, the professional man, in short, for all men and women who sincerely seek to improve their conditions.

It is impossible to enumerate and predict as to the questions which will come before the next Legislature. I shall not attempt it. If elected I will use every honorable effort to effect thrift and economy in public and private affairs and reduce tax burdens. There will also be many educational problems presented for solution, and in these I shall have a vital and unusual interest.

I am keenly alert to our pressing industrial problems and the relations between capital and labor. I shall meet these very difficult questions with an open mind, giving to them my most careful study and applying to them my best intelligence.

Of course, in Wisconsin, the question of equal suffrage is no longer an open one, and I shall rejoice with others in the entrance of women into the full rights of citizenship.

If sent to the Legislature I shall use my energy, my equipment, my judgment, and my conscience as effectively as possible for public good.

Thanking you for what you have already done, and soliciting your vote and influence, I remain,

Sincerely,

Alexander E. Matheson.

# Children's Ailments

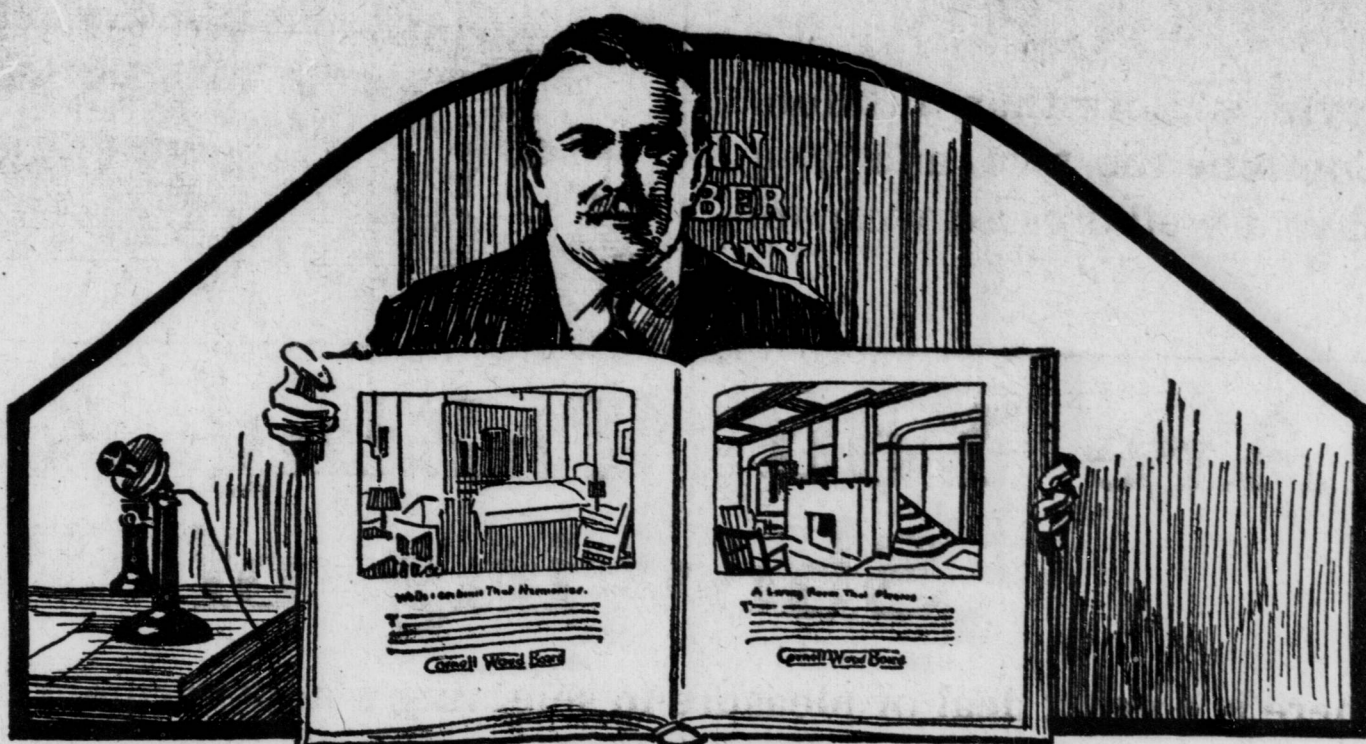


**D**ISORDERS of the stomach and constipation are the most common diseases of children. To correct them you will find nothing better than Chamberlain's Tablets. One tablet at bed time will do the work and will make your child bright and cheerful the following morning. Do not punish your children by giving them castor oil. Chamberlain's Tablets are better and more pleasant to take.

## Chamberlain's Tablets

**Why  
Has Chiropractic  
Made Such Progress?**

**Davis Chiropactic  
Offices**



## Come See This Book of "Cornell Interiors"



"Cornell solved our space problem," says the factory superintendent. Millions of feet of waste space are being converted into useful quarters this way. Fabrications of machines cannot cause Cornell to crack or fall.

We have just received this new collection of views that shows the variety and charm of paneled interiors so easily obtained in any room by using Cornell-Wood-Board instead of lath and plaster. Come in and see the finished effects that you can reproduce in your home, store, office, factory or garage with "Cornell 32" or "Cornell 48" widths. Cornell is everywhere admired because of its handsome "Oatmeal Finish" not found in other wallboards.

And Cornell's "Triple-Sizing" process gives triple protection against moisture, expansion and contraction.

## Cornell-Wood-Board

We recommend Cornell for new construction, remodeling and repairing because there is nothing cleaner, more sanitary and attractive, nor so inex-



"No Interruptions During Alterations," where Cornell-Wood-Board is used for walls, ceilings, partitions, exhibition booths or showrooms instead of lath and plaster. No muss; no waiting weeks for walls to dry.

pensive. It is easily applied with hammer and nails right to the joists and studding or over damaged plaster. Come in now and look over the ideas in this new book.

## HEDDLES LUMBER COMPANY

Edgerton, Wisconsin

## Farm With a Fordson Tractor

A FORDSON is always of use on any farm. We would like to call your attention to the various uses of a FORDSON at the present time.

- 1 Drawing corn binder by means of a special hitch.
- 2 In some sections it is now used for drawing the potato digger.

It can be used very soon for—

1. Clover hulling.
2. Silo filling.
3. Corn Shredding.
4. Hay baling.
5. Drawing the manure spreader.
6. Fall plowing, seeding, etc.

## Turn Your Hard Work Into Play With a Fordson

We can deliver to you within a few days any type of farm implement, farm machine, hitch etc., to be used with a FORDSON tractor. Inquire about our prices on any style farm machinery and set a date with us for a demonstration on your own farm.

IMMEDIATE

Price F. O. B. Factory

DELIVERY

**\$850.00**

## T. & T. MOTOR COMPANY

EDGERTON, WISCONSIN

## "You Save Money"

says the Good Judge

And get more genuine chewing satisfaction, when you use this class of tobacco.

This is because the full, rich, real tobacco taste lasts so long, you don't need a fresh chew nearly as often.

And a small chew gives more real satisfaction than a big chew of the ordinary kind ever did.

Any man who uses the Real Tobacco Chew will tell you that.

Put up in two styles

W-B CUT is a long fine-cut tobacco

RIGHT CUT is a short-cut tobacco

Weyman-Bruton Company, 1107 Broadway, New York City.



## C. E. SWEENEY, Dealer in Real Estate.

Edgerton, Wisconsin,

WISCONSIN and WESTERN LANDS  
for sale or exchange.

## Our Motto Cleanliness

Nowhere on earth does Cleanliness count more than in a market. Realizing this we maintain a perfectly Sanitary Condition.

## QUALITY, ONLY THE FINEST

If a clean market, clean market products, choicest of quality and right prices appeal to you, then buy your meats at

**H. E. PETERS**