

**Clip—Clip—Clip in the Children's Barber Shop**

And snip, snip, snip—and off come all the ragged ends of hair, and in place you see reflected in the mirrors smiling wee faces with the very latest and cutest hair cuts.

SECOND FLOOR—THE BON MARCHE



**The Bon Marché**

ESTABLISHED 1899

**The Children's Story Hour Saturday, 10:45 A. M.**

"Little Orphan Annie" is going to tell Hallowe'en stories Saturday in the Toy Basement.

And you'll want to be there, big-eyed and thrilled by the tales and pranks she will relate—all with the flavor of Hallowe'en.

TOY BASEMENT—UNION STREET SIDE

**Women's Wet Weather Shoes \$12.50**



We say Wet Weather Shoes, but they can be worn for street or business at any time. Made over a brogue last with stitched tip, heavy flexible welt soles and 1½-inch Cuban heels. Sizes 3 to 8, widths AA to B.

Felt Slippers, many shades and styles, priced at \$2.50 to \$4.50

**Growing Girls' Shoes \$10.00**

Shoes with 8-inch toes, made of tan calfskin, with extra heavy welt soles and sensible heels, and made for service—sizes 2½ to 7.

**Growing Girls' Shoes**

Shoes of black gunmetal, built over a last that growing girls like. Medium toes, durable soles and sensible heels. Sizes up to 7, at \$6.50 to \$7.00.

UPPER MAIN FLOOR—THE BON MARCHE

**Misses' School Shoes**

IN BLACK AT \$6.00  
IN BROWN AT \$6.50

Misses' Shoes of brown or black—a modified English style with welt soles and sensible heels. Sizes 11½ to 2.

**Kiddies' Kumfort Shoes**

Just the shoes for hard knockers are these in brown, champagne, pearl or black, with durable welt soles and spring heels—8¼ to 11, at \$4.50.

Children's Felt Slippers—in a large number of colors and plenty of sizes—\$1.35 to \$2.50.

UPPER MAIN FLOOR—THE BON MARCHE

**Boys' School Shoes**

**\$5.00 a Pair**

Several different styles in black calf, brown Russia, black grain calf shoes, blucher style—made over an army last with good weight soles. Good serviceable shoes for every day or school—sizes 1 to 6.

**Boys' Calf Shoes \$5.00**

Good looking, splendid wearing Shoes, these of brown calf, made over the popular English last with welt soles—fine for dress or school—sizes 2½ to 5.

BOYS' SHOE SHOP—LOWER MAIN FLOOR

**Starting Saturday**

**The November Sale of Coats**

**If You're Looking for Real Coat Values You'll Find Them at The Bon Marche**

**D**URING November we will concentrate our efforts upon better values in better Coats for the women of Seattle. All our energies will be centered upon bringing you the very best the market affords for the price.

And so we ask you to judge our efforts solely upon these three features—Style, Quality and Price.

For Saturday we offer extra special attractions in

**Coats \$39.50**

**H**ANDSOME and serviceable silvertones and velours in brown or blue, are styled on straight lines and have sealine or self collars.

COAT SECTION—SECOND FLOOR

**Coats \$75.00**

**B**EAUTIFUL cape collars of fur or self material distinguish these coats in wrappy, straight-line or drop-waisted effects.

COAT SECTION—SECOND FLOOR

**Coats \$55.00**

**W**RAPPY or straight-line effects with fur or deep self collars are shown in unusual shades of blue or brown.

COAT SECTION—SECOND FLOOR



**Hallowe'en Goodies**

Cider and doughnuts and pumpkin pies,

Big black cats with wiggly eyes,

Fashioned from sugar and fancy cake

That Bon Marche Bakers only can make—

Witches on brooms and chocolate sprites

Are only a few of the terrible frights

That grinningly glare as "Specials" are seen—

For tomorrow you know is All-Hallowe'en.

**Hallowe'en Cakes, Special \$1**

- Hallowe'en light Fruit Cake, 50¢ lb.
- Pumpkin Pies, special at 45¢ each.
- Soda Crackers, 18¢ pound.
- Special Apples, delivered, \$2.75 box.
- Walnuts, 29¢ pound.
- Cider by the bottle.

Special demonstration showing how to decorate the Hallowe'en cakes.

BAKERY—UPPER MAIN FLOOR

**Pork Sausage 34c lb.**

—Bon Marche Pork Sausage, special 34¢ pound.

—Bon Marche Thousand Island Salad Dressing, special, 45¢ pound.

—Pure Strained Honey, our regular price 35¢, special 27¢.

—Strawberry Preserve, our regular 60¢ grade, special 31¢ pound.

—Full Washington Cream Cheese, special at 32¢ pound.

—Bon Marche Mayonnaise, our regular 50¢ grade, special at 40¢.

DELICATESSEN—UPPER MAIN FLOOR



**"Nippon" Hand-Painted Plates 43c**

Imported Nippon China Dessert Plates in a variety of pretty floral designs. Nice for gifts or to keep. Very special, 43c each.



**"Tattoo" Alarm Clocks**

Special at \$2.48

Our regular \$3.50 Clocks, made by the New Haven Clock Co. Warranted good timekeepers. With intermittent or steady alarm.

FOURTH FLOOR—THE BON MARCHE



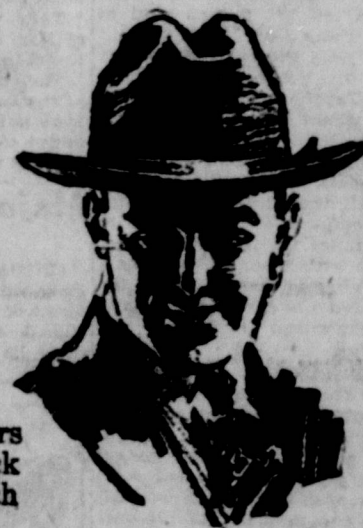
**Coffee Percolators**

\$1.95

Pure Aluminum Coffee Percolators, with aluminum insert—6 or 8-cup size.

**Play Safe—BUY a Hat**  
**Don't Wait to Win Your Bet**

**Any \$10 Stetson or Mallory Hat \$7.50**



Choose from all the new blocks and colors for Fall and Winter and from our entire stock of Stetsons and Mallorys—at a price which means a big saving.

**Men's Snappy Four-in-Hands 95c**

A special purchase of 1,200 silk and silk-mixed Four-in-Hands shown in an almost endless assortment of brocades, figures, Persians and fancy designs in wide variety of colors.

MEN'S SHOP—LOWER MAIN FLOOR

**Men's Cotton Union Suits \$1.95**

Heavy Ribbed Cotton Union Suits for men are smooth-fitting, have the comfortable closed crotch and come in white, gray and ecru. In all sizes.

**A Special Purchase of Boys' Overcoats \$10**

Just received, a big lot of Boys' Overcoats in button-to-the-neck styles, double-breasted, patch pockets with flap, all-around belts. In brown, green, tan and navy. Sizes 3 to 10.

BOYS' SECTION—UPPER MAIN FLOOR

**Women's Muslin Drawers**

—39c—

Good quality with embroidery flounces and taped waist.

**THE BON MARCHE BARGAIN BASEMENT**

**Cotton Taffeta Petticoats**

—\$1.98—

Black with floral patterns in bright colors. Elastic waist.

**Handsome and Serviceable Serge Dresses at \$13.95**

Splendid Values in

**Children's Coats, \$4.95 and \$5.95**

Both single and double breasted styles in smart velvets, kerseys, corduroys and novelty coatings are here in browns, blues, greens and grays. All are lined through and most of them are warmly interlined. Sizes 2 to 10, but not all sizes in each material.

**Children's Coats \$10.95 and \$12.95**

Some of these coats have fur collars, all are full lined, and many of them are interlined for warmth.

The materials are silvertones, polo cloths, velours, bearcloths, boucles, chinchilla and novelty fabrics in navy, brown, green and gray.

These are in sizes from 7 to 14 years, but not every fabric in each color, size or style.

**Aprons at \$1.00**

Slip-over and bungalow aprons in four good styles are shown in plain pink and blue with rick-rack trimming and in white percales with black figures. All sizes from 38 to 48.

**Unusually Good Values**

Plain navy serges and navy blue herringbone serges of excellent quality are made up in four splendid styles with trimmings of cylinder or round beads, silk floss, plain buttons, covered buttons, yarn and tinsel. Straight-line and tunic effects with narrow sash-like belts are featured. All have China silk linings and long or three-quarter sleeves. Sizes 16 to 42.

**\$15.95 for Women's Winter Coats**

**Silk-Lined Throughout**

COATS with all the warmth and style of those much higher in price are ready for the careful shopper in the Bargain Basement.

They are of excellent velours and have big convertible collars of self material, two novel pockets and an inverted box plait in the back.

Shown in brown, tan, burgundy and deep green. Sizes from 36 to 42.

**Babies' Soft-Soled Shoes at 59c Pair**

Some Are Seconds

Three hundred pairs of the cutest little shoes imaginable in Mary Jane, moccasin or button styles, made of quilted silk in white, pink or blue, and of white, brown, tan or blue kid. Many are partly black patent leather.

Some of the silk shoes are ribbon-trimmed and finished with feather-stitching.

**SHOES FOR EVERYDAY WEAR**

Factory Seconds of

**Children's Scufflers \$1.00 Pair**

They're factory seconds because of some blemish in the leather which affects the looks—BUT NOT THE WEAR. All lace style in chocolate, black or tan—fine for everyday. Sizes from 5 to 11.

**Women's Wool Sweaters \$5.95**

In Slip-On and Tuxedo Styles

Handsome tuxedos, smart slip-ons and a few novelty coat styles are shown in a variety of weaves and in navy, pink, heliotrope, turquoise, and tan, some with trimmings in contrasting colors. All sizes from 38 to 46.