

## In The Local Political Field

Emmitt Plost has made one of the best incumbents of the Sheriff's office that the people of Ada county ever elected. He has made good in every particular. Alert and vigilant he has been successful in apprehending criminals; with a keen sense of public duty, he has been thoroughly efficient and economical in the management of his office. It is a safe rule and one strongly recognized by the American people that at faithful official is entitled to a second term.

H. A. Lawson, one of Idaho's best known newspaper writers and a thoroughly wide-awake and public-spirited gentleman, is being actively supported for State Senator by the Republican rank and file. Mr. Lawson made good as a State Representative, is the author of the Mother's Pension law and was always on the right side of legislative matters. Put a cross after his name if you vote in the Republican primaries.

D. T. Miller for Probate Judge. The Republicans are indeed fortunate that so highly qualified a man is a candidate for the nomination and the taxpayers are also fortunate in that his record as Justice of the Peace during the past two years shows him to have kept down all trivial matters that simply add to the people's burdens.

S. D. Fairchild is one of the foremost men of Ada county. He is a lawyer, who saw the necessity for development work in Idaho and who quit the practice to develop a ranch in the Kuna-Mora district. Mr. Fairchild enjoys the confidence of the farmers of Ada county as does no other man. He is a candidate for the Republican nomination for Probate Judge.

Ray Cunningham, a member of the Printer's union, and one of the best known men in Boise, desires to be the next Assessor and is making a lively canvass for the Republican nomination. Ray is well qualified for the position and his many friends are working like beavers to put him over. Mr. Cunningham was the first city employment agent and made good in that position. He would work day and night to land a job for a deserving individual. Give him your earnest support.

Charles E. Thum, a Republican aspirant for the nomination for County Commissioner in the First district, is well and favorably known in Boise business circles, and is a quiet, unassuming gentleman, courteous and considerate and would make a splendid official. Mr. Thum is receiving assurances of good support. The county's affairs would be safe in his hands.

No man stands higher among the people of Ada county than George H. Curtis, the Democratic candidate for State Senator. Mr. Curtis desires to enter public life in order to render service. He is a deep student of current events and is a firm believer in the inevitable march of the human race towards fundamental and complete democracy. The people should draft such a man into the public service, whenever they have an opportunity.

J. O. Jordan is conducting an active campaign for the Republican nomination for Assessor and is hopeful of success. Mr. Jordan is an energetic and capable gentleman and every way qualified for the position to which he aspires. You will make no mistake if you put a cross after his name.

Dr. S. M. C. Reynolds, one of Idaho's pioneers and a man of sterling worth, is a candidate for the Republican nomination for Representative in the Legislature and is receiving heavy support in his home community. Dr. Reynolds is the possessor of a keen intellect, a quick wit and an incisive manner of speech backed by shrewd common sense. He would be an influential member of the Legislature. Stand by him.

The one thing that strikes us about E. S. Delana is his intense earnestness and frankness. Mr. Delana is a candidate for the Republican nomination for Prosecuting Attorney. He is one of the best educated and deepest students of the Boise bar and possesses the ambition for public life inherent in bright young men of the right character. Not an ambition solely for personal preferment but to carve an honorable name for public service in the annals of the State. Put a cross after his name. You will never regret it.

William D. Clawson, a Republican aspirant for the office of Sheriff, has been a resident of Ada county for 33 of the 34 years of his life—his parents having been well-known pioneers. Mr. Clawson served as Deputy Sheriff for five and one-half years and made an enviable reputation as a brave and capable official. He has a thorough knowledge of Ada county and of our people and in his election as Sheriff the public would be assured of a faithful and efficient performance of duty.

In a conversation with Assessor Wm. Kincaid we learned that he would not be able to get out over the county in the interest of his candidacy for renomination, as the duties of his office would keep him busy. Mr. Kincaid states he has made every effort to give every individual "a square deal," and to attend to his office with the very strictest economy. He feels that his record is an open book and invites the closest scrutiny of his official acts. If the voters think he has made good he would be pleased if they would register their approval by placing a cross after his name. This office is the one that comes closest to the people and to the nerve center—the pocket book and the voters should keep a capable and efficient official.



Charles T. Barringer  
Candidate for Representative  
on Republican Ticket  
Ada County

## Link's Business College

THE SCHOOL THAT GETS RESULTS

Fall Term Begins Tuesday, September 5

LINK'S GRADUATES MAKE GOOD BUSINESS MEN

August 19, 1916.

Mr. W. H. Coppedge,  
Manager of Link's Business College, Boise, Idaho.

Dear Sir: In January of this year Fred D. Monroe, a graduate of your Business College, was appointed Assistant Cashier of the First National Bank of Emmett, and as a recommendation of your school I wish to say that owing to the efficient training he received in Link's Business College, he has been and is now making good in every line of his work.

Very truly yours,  
C. B. POLLY,  
Cashier.

MORE CALLS FOR OUR STUDENTS THAN WE CAN SUPPLY

Placed one young lady in a position yesterday, have two calls today, and one will pay an initial salary of \$70 a month. Within the last few weeks we have had many calls which we could not supply because every advanced student is now holding a good position.

WE CAN GUARANTEE A POSITION WITH THE GOVERNMENT OR IN THE COMMERCIAL WORLD TO EVERY YOUNG MAN OR YOUNG WOMAN WHO WILL COMPLETE OUR COURSES

Young men, young women, the demand for competent office help by the business men of this Intermountain country is urgent. Link's Business College is so well and favorably known that we are called upon to furnish more office help than all other agencies in Idaho combined. In all our experience we have never had such a demand for Bookkeepers and Stenographers as since January 1st, and the calls continue to come.

We are exceedingly anxious to supply this demand for office help, but in order to do so, we must enroll every available young man and young woman in this Intermountain country.

Surely if you understood the business conditions as they are and the many opportunities that are and will be open to the efficiently business trained young men and young women, you would not hesitate to make the necessary arrangements, whatever sacrifice it might take on your part, to begin your course with us at the opening of our Fall term, September 5.

Do not put this important matter off; but think, decide, and act NOW. Make your enrollment this week, begin your course with us next Tuesday with a determination to win, and you will find the time and money well spent in getting your business education the best investment you ever made.

WRITE FOR ILLUSTRATED CATALOGUE

W. H. COPPEDGE, Manager

Phone 1055-J

1015 IDAHOSTREET

Boise, Idaho

## CASH BAZAR

THE STORE OF POPULAR PRICES

We are now showing a complete stock of Fall and Winter Merchandise and a call at our store will convince you that our prices are a little lower than the rest

### MILK CANS

Milk cans made of extra heavy tin, iron rim bottom, made to give satisfaction.  
2 gal. size .....1.75  
3 gal. size .....2.00  
5 gal. size .....2.15  
8 gal. size .....2.35  
10 gal. size .....2.75  
Milk strainers, all sizes 15c to 50c.

### GRANITE WARE SPECIALS

10 qt. enamel dish pans .....25c  
14 qt. enamel dish pans .....45c  
17 qt. enamel dish pans .....55c  
21 qt. enamel dish pans .....85c  
Granite Stew Kettles at 15c, 19c, 23c, 29c, and 35c.

### DINNERWARE

All of the dinnerware listed in sets and also carried in open stock.  
42 piece set dinnerware of White Semi-Porcelain Roddison pattern, set .....2.19  
42 piece set dinnerware with neat gilt stamped pattern, set .....2.98  
42 piece set dinnerware with neat floral decoration, per set .....3.69  
We also carry complete assortment of heavy ware for hotels, and which are especially good for harvest and threshing time.

### BOYS' SHOES

Boys tan Calf Blucher shoes a good heavy shoe, size 1 to 6, priced per pair .....1.75  
Boys Gun Metal Button shoes, "Walton make" solid made thru-out.  
Size 8 to 11½, pair .....1.65  
Size 12 to 13½, pair .....1.85  
Size 1 to 2, pair .....2.00  
Size 2½ to 5½, pair .....2.25

### GIRLS' SHOES

Walton make of girls' school shoes are made to stand hard wear; double cap; in gunmetal or vici kid—  
Size 5 to 8½, pair .....1.35  
Size 9 to 11½, pair .....1.75  
Size 12 to 2½, pair .....2.00

### WOMEN'S SHOES

Women's Gun Metal or Vici kid button shoes, patent tip, low heel, pair .....2.25  
Women's vici kid shoes, high cut 16 buttons, pair .....3.25  
Women's patent leather button shoe, kid uppers, high cut, 16 buttons, pair .....3.45

### MILLINERY DEPARTMENT

We are now showing the new fall Hats in velvets, hatters' plush, etc., in all the new shapes at the usual Bazar low prices. We are also showing a large assortment of the newest Hat trimmings, ranging in price from 15c upwards.

### DRESS GOODS

50 inch wide shepherd checks, yard .....35c  
36 inch wide Wool Serge in black, white and colors, yard .....47½c  
42 inch wide Wool Poplin in black and colors, yard .....89c

### HOSIERY DEPARTMENT

Misses' Fine Cotton Hose in black  
Misses' Fine Ribbed Cotton Hose in black or white, 2 pairs .....25c  
Women's Silk Boot Hose, black or white, pair .....29c  
Women's black or white Cotton Hose, 2 pairs .....25c

### CURTAIN SCRIMS 10c YARD

Curtain Scrims in short lengths in plain white and white and cream with fancy borders; regular 15c value; special, yard .....10c

### BLANKETS

Gray Cotton Blankets, with fancy border; size 46x74, pair .....65c  
Cotton Blankets in gray, tan or white with fancy border; size 60x76, pair .....\$1.00  
Wool nap Blanket in fancy plaids, large size, pair .....\$2.59

### DRESSES

We are now showing a large assortment of the newest fall styles in Dresses for Women and Misses, in Wool Serges, Silks, Poplins, etc. you can get the same style, workmanship, and material here as shown elsewhere at a saving in price.  
Women's and Misses Silk Dresses in Black, Navy and Green with white silk collar and cuffs, special values at .....5.98  
Misses Wool Serge Dresses, with large sailor collar braided trimmed, special value at .....5.00  
Other good values at from 5.98 to 12.50.

### SKIRTS

Women's Skirts made of all wool serges, with yoke effect, priced at .....3.48  
Women's all wool serge or Poplin skirts, neatly made with patch pockets, large pearl buttons, priced at .....3.98

### HOUSE DRESSES AND APRONS

Women's Percale house Dresses in gray, blues, etc., ric-rac trimmed special values at .....98c  
Women's Bungalow aprons made of good quality percale, Saturday, each .....39c

### MIDDIES

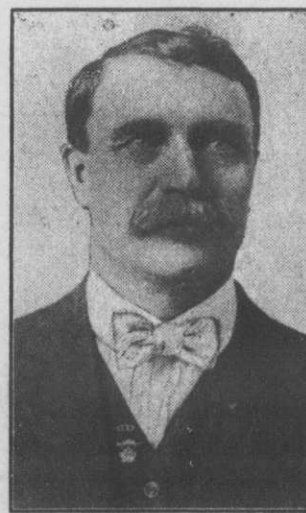
Women's and Misses Middies of good quality Galatea cloth, with large colored collars and cuffs. Special for Saturday .....1.00

### WAISTS

Women's Waists of Jap silk in plain or embroidered, plain voiles with the new large collars, mercerized corded, stripe, voiles or-gandie waists, about 25 different styles in waists, special price 1.00  
Women's Waists made of Handkerchief linen, in plain white with colored collars, 2.25 waists, special at .....1.50

DON'T FAIL TO CAST A VOTE AT THE PRIMARY  
SEPTEMBER 5, 1916  
FOR

WM. A. KINCAID for County Assessor  
ON THE REPUBLICAN TICKET



I have been a tax-payer of Ada County for twenty-two years; worked as a carpenter and employee of the Street Car Company until I began my term as Assessor.

I am ready now, as in the past, to give you careful, conscientious, painstaking service. My experience will help me to do your work better at less expense.

W. A. KINCAID.