

LOW RATES

—TO—
WASHINGTON

DAILY
During March and April
From all Parts of the East
Via

**UNION PACIFIC
OREGON SHORT LINE
THE OREGON
RAILROAD & NAVIGATION CO.**

\$33.00 From Chicago
\$30.50 From St. Louis
\$25.00 From Omaha
\$25.00 From Kansas City
Correspondingly Low From
all Other Points.

TO THE PUBLIC

Write letters to everybody you know
in the east and tell them about these
low colonist rates. Send them liter-
ature about your state or send their
addresses to us and we will do it. In
this way you can aid amazingly in
its growth and progress.

YOU CAN PREPAY FARES.

For anyone from any place if you
want to. Deposit the necessary amount
with our local agent and he will tel-
egraph ticket promptly.

**R. BURNS,
D. F. & P. AGENT.
O. R. & N. CO.**

TRY OUR

SANITARY CREAM BREAD

USE IT ONCE AND YOU WILL
USE NO OTHER.

**MODEL BAKERY
AND CONFECTIONERY**

Phone 38. No. 3 First St.

GEO. C. PORTER

Contractor for Plain and
Ornamental Plastering
Phone 632

First National Bank

(First National Bank in State)
WALLA WALLA, WASH.
Transacts General Banking
Business.

Capital\$100,000
Surplus300,000

Levi AnkneyPresident
A. H. ReynoldsVice-President
A. R. BurfordCashier
P. M. WinansAsst. Cashier

Sawyer Suits Satisfy

MADE TO MEASURE.
222 E. Alder. Tel. 1484

For the news of your community you
should subscribe for the Morning and
Sunday Union.

—New Books—

"The Red Mouse,"Osborne
"Annie of Green Gables"Montgomery
"The Old Allegiance"Hubert Wales
"The Opened Shutters"Clara Louise Burnham
"The Red City"S. Weir Mitchell
"Bill Truetill"Brennon
"The Land of the Living"Maud Rutford Warrin
"Though Life Do Us Part" Elizabeth Stewart Philips
And Others.

**Walla Walla
Paper and Stationery Co.**

EVERYBODY WILL GET A COMIC.

Owing to the rapid increase
in circulation of the Sunday
paper it is impossible to furnish
every subscriber with a colored
supplement this week. This is
caused by the addition of the
Sunday paper to the circulation
of the Sunday Union and
changing the name of the Sun-
day Union-Statesman. A tele-
graphic order was sent to the
firm in the East which handles
the comic supplements to in-
crease the usual number by over
two thousand. They replied that
they will be able to supply the
order within four weeks, or pos-
sibly sooner. In the meantime
the indulgence of the subscrib-
ers is asked. An effort will be
made to let everybody have a
comic as many times as possible
during the coming four weeks,
although all cannot be supplied
on the same day.

THE WEATHER.

Data furnished by the United
States weather bureau.
Forecast for Walla Walla to-
day: Fair.
Temperature—At 5 a. m., 32;
at 5 p. m., 46; highest, 46; low-
est, 31.
Precipitation—At 5 a. m., 0;
at 5 p. m., 0; total for day 0;
total for month to date .94;
total from January 1st to date
5.64; excess in precipitation
since January 1st, 1.77.

FRANKLAND ADDITION TAKES BIG STRIDES

**GREATER WALLA WALLA COM-
ING AND CANNOT BE SHAKEN
AWAY**

George Brown of the Firm Frankland
& Brown, Talks of New Resi-
dence District.

There is more of a movement in real
estate in Walla Walla today than most
people imagine. Many are wise and
investing with no chance of losing.
The greater Walla Walla is here and
it cannot be shook off. To particu-
larize a reporter asked Mr. George Brown
of the firm of Frankland & Brown
how lots in Frankland addition were
moving. Mr. Brown had one of those
smiles that "Won't come off" when he
replied:

"We are more than pleased. We ex-
pected during the recent bad weather
to have a slow sale, but to our great
surprise the lots have been selling like
hot cakes. Those who see the prop-
erty invariably buy, inasmuch as it is
potent at a glance that Frankland ad-
dition is the coming residence section
surrounded as it is with the very best
conditions. Our trees are now all
planted and the streets are all in fine
shape, excepting the leveling of one
street on the west that will have to be
rolled and shaped. Most of those buy-
ing up to the present have taken two
lots. Those securing lots, too, are
people who have made a success in
every venture, among them being a
party who has made considerable
money in investments in Seattle and
Spokane and may be safely called an
expert in realty. This party pur-
chased three lots."

**THE
WILLIAMSON
HAFFNER CO.**
ENGRAVERS OUR PRINTERS
CUTS & TALK
DENVER, COLO.

COLLEGIANS SING TO PACKED HOUSE

**GREAT SUCCESS FOR GLEE CLUB
AT MILTON AND COLLEGE
PLACE.**

Singers This Year Are of High
Standard—Careful Training by
Director.

Following its success in the first
concert of the season at Milton given
Friday night, the Glee club of Whit-
man college sang last night at College
Place, giving a repetition of the pro-
gram rendered the night before. A
good house greeted the singers and the
musical numbers were well rendered.
The song "Bill of Fare," which was
given as an encore in the second part
was especially well received. Prof. A.
C. Jackson rendered the "Toreador
Song" in his usual pleasing manner,
and Miss Hughena Thompson, reader,
caused ripples of merriment to go over
the audience by her rendering of "The
House With the Paint Worn Off" and
"The Demonstration." Every number on
the program was enjoyed.

**BEAUTIFUL BASKETS BRING
SOME FABULOUS PRICES**

Delightful Social and Literary Evening
Held at May School House
Near Waitsburg.

A very successful basket social was
held at the May school house near
Waitsburg, Friday evening, Febru-
ary 26.
The school is being conducted by
Miss Juanita Carmichael, who with
able assistance of the literary commit-
tee, had arranged a meritorious pro-
gram consisting of monologues, decla-
mations, dialogues and tableaux, de-
lightfully interspersed with musical
selections. Following the literary part
of the program a number of baskets
beautiful to behold, and containing the
delicacies peculiar to mountain regions
were auctioned at fabulous prices, net-
ting to the school district in round
numbers, \$60. This money will be
used to buy articles needed to further
equip the school building and assist
the teacher in her work.

As the ground was covered with
snow several sleighing parties were
formed among the younger set in their
effort to reach their respective abodes.

NEW TARGET PRACTICE LAND

Troopers May Have Place on Wenaha
Reserve.

Permission has recently been granted
by the United States forestry depart-
ment to the war department that sol-
diers stationed at Fort Walla Walla
may use about 640 acres of the Wen-
aha reserve, located near the toll gate
as a field for target practice for this
season.

While the permit is issued for this
season's practice only it is thought
probable that it will be made a per-
manent affair, in which case fencing
and other improvements are expected
to be placed on the land.
For a number of years the authori-
ties have recognized the need of dif-
ferent target grounds and the fact that
the target practice was carried out as
much as needed owing to the difficulty
of reaching suitable grounds. No
doubt the troopers will be surprised
to learn of the change of plans for
although not officially announced, it
was generally understood that this
season's practice would be held at Sil-
ver lake, in the western part of the
state, and from that point the troops
would be sent to the A.-Y.-P.

A Woman's Appeal

To all knowing sufferers of rheumatism,
whether muscular or of the joints, sciatica,
umbago, backache, pains in the kidneys
or neuralgia pains, to write to her for a
cure which has repeatedly cured
all of these troubles. She feels it her duty
to send it to all sufferers FREE. You
cure yourself at home as thousands will
testify—no change of climate being neces-
sary. This simple discovery banishes uric
acid from the blood, and brightens the eyes,
giving elasticity and tone to the whole sys-
tem. If the above interests you, for proof
address Mrs. M. Summers, Box R, South
Bend, Ind.

NOTICE.

Persons selling milk in the city of
Walla Walla after March 15, 1909,
without a permit from the dairy in-
spector will be prosecuted according to
Ordinance 995.

J. ELLERY FALES, M. D.
3-4-7-ch City Dairy Inspector.

Threatened Trouble Adjusted.

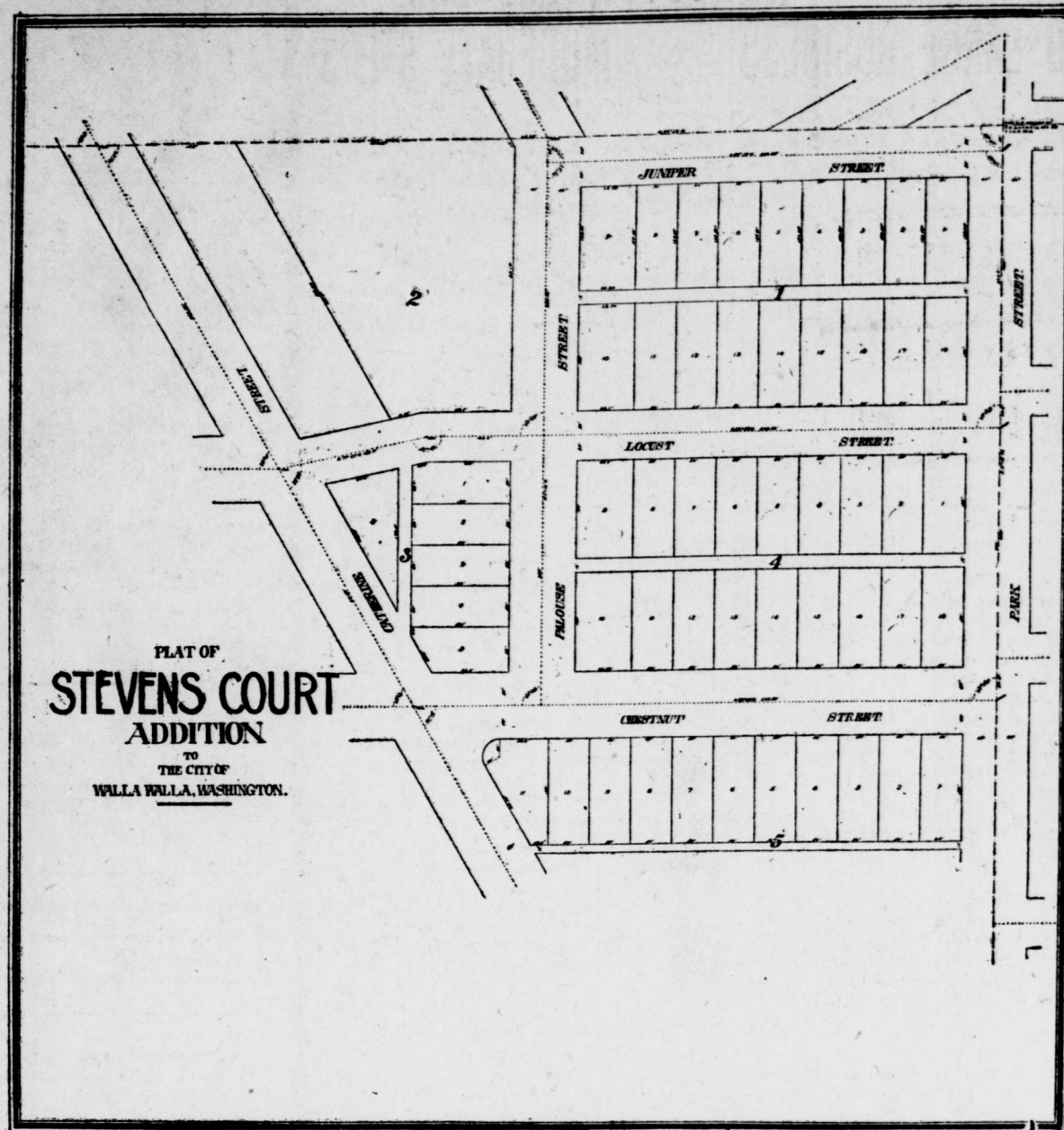
HAVRE, March 6.—The threatened
trouble between the crews of some of
the French line steamers and the com-
pany has been adjusted to the satis-
faction of the men and LaProvence
sailed from here this afternoon on
time.

Deafness Cannot Be Cured

by local applications, as they cannot reach
the diseased portion of the ear. There
is only one way to cure deafness, and that
is by constitutional remedies. Deafness is
caused by an inflamed condition of the
mucous lining of the Eustachian tube.
When this tube is inflamed you have a
rumbling sound or imperfect hearing, and
when it is entirely closed, deafness is the
result, and unless the inflammation can
be taken out and this tube restored to its
normal condition, hearing will be destroyed
forever; nine cases out of ten are caused
by Catarrh, which is nothing but an in-
flamed condition of the mucous surfaces.
We will give One Hundred Dollars for
any case of Deafness (caused by Catarrh)
that cannot be cured by Hall's Catarrh
Cure. Send for circulars free.
P. J. CHENEY & CO., Toledo, O.
Sold by Druggists, price 75c.
Take Hall's Family Pills for Constipa-
tion.

Stevens Court

This beautiful
addition lies on
the south side
between Palouse
and Park streets



The contract has been let for Macademizing of Palouse Street, and Park Street will be Macademized soon, making it a very desirable place for a home. This is the nicest close-in property on the market today. Two blocks from the car line and school. This property has a sufficiently large building restriction to insure good homes; you can buy a lot now for \$700 for inside lots and \$750 for corners, at terms of \$100 cash; balance \$10 per month.

These Lots Will be Worth \$1,200 in 1910

It is a pleasure to us to show this property.
Call up for an Auto Ride.



13 West Main

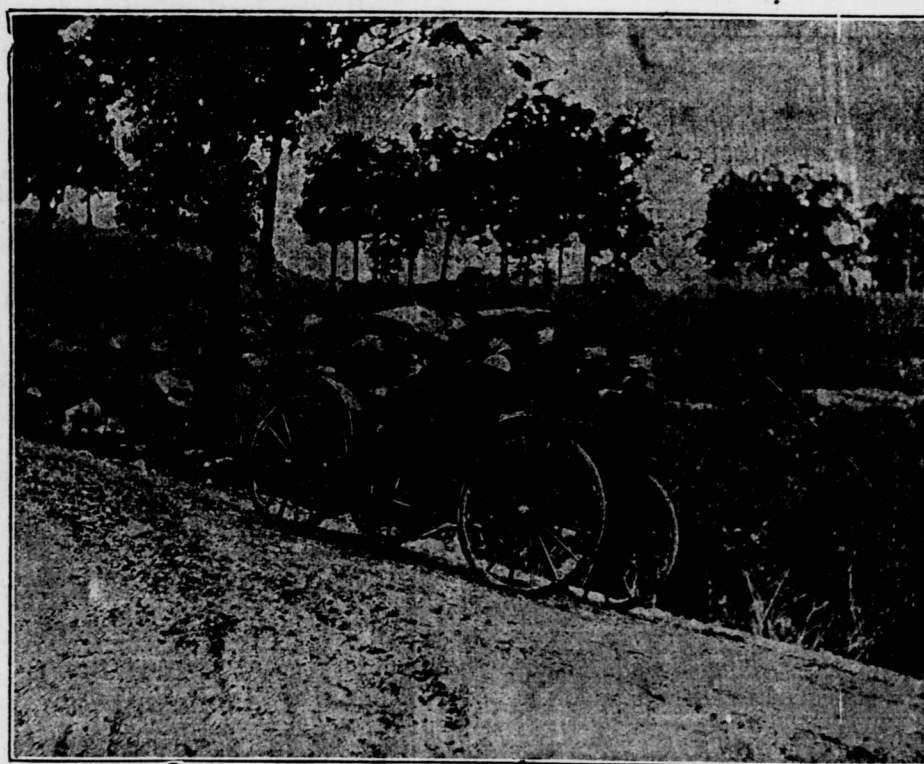
Remember we specialize on City Property and Irrigated Lands.

Phone 139

BIG CUT IN AUTO BUGGIES

\$1100 F. O. B. WALLA WALLA, FULLY EQUIPPED

Including two seats, double top, storm front, chain silencer, gas lamps and generator, horn, and full equipment of tools, magneto included. \$1100.00 takes them. A price so low that an Auto Buggy is in reach of everybody.



INTERNATIONAL AUTO BUGGY

In designing the International Auto Buggy no attempt has been made to perfect a car that will equal the speed of high-powered automobiles over good roads and paved streets. It is not a car so lavishly furnished and high priced that it is a luxury. But it is a thoroughly dependable car that can be used for both business and pleasure—for every-day service where mileage is money for the driver. It is built as nearly as possible like a buggy. This kind of vehicle has been serving country town and rural people for years, and there is no reason why a simple motor vehicle of this type cannot serve them in the future. This car is made particularly for rural salesmen, farmers, business and professional men, as well as country town residents who demand a car that is absolutely dependable in all conditions of road.

It will go anywhere a team of roadsters can—up hills, over rough roads and through the mud. It has wonderful service ability and is adapted for either business or pleasure. It is the acme of simplicity. Your wife or daughter can drive it and there will be no trouble from motor or tires. It will travel from 2 to 20 miles per hour. And, it has, in addition to all this: Economy in its operation and lack of cost for repairs. It is the horseless vehicle of greatest worth. We give a demonstration to all inquirers. The local agency is exclusive with us.

This machine has a carrying capacity with rear seat removed, of eight hundred pounds.

Tierney-Toner Co. South Second Street.