

## ROASTS COACH KENNEDY

The Press has received the following criticism of the high school football management:

"I quote from the morning paper, Nov. 12, the following line: 'If Broadway wins, there will be no excuse. It will simply be because they are the better team.' She Spokane public are long suffering, and it seems to be a pity that because a newspaper man happens to be a college associate of the coach of the high school team, that he should fail to give to the public the proper information and put the blame where it belongs, when mistakes are made. As a man, Mr. Kennedy is a splendid fellow, but as a coach he has shown his ignorance of modern football, by taking a team of players, who are not only conceded to be, but are the finest high school football team in the whole northwest, probably the finest in the United States, and make them look like a lot of children. Hitherto the individual players, like Captain Rice, DeWitt and others of the team have had to bear the brunt of the coach's mistakes, but it is fair to put the blame where it belongs.

To those who have seen the games of the high school against Tacoma and Seattle high school teams, it has been a matter of surprise that such men, with the grit and ability they displayed, should show such poor knowledge of the game. The game with Tacoma should have been about 24 to 4 in favor of Spokane, but Coach Kennedy instructed his boys not to play, and they stood around like a lot of kids, letting the Tacoma players make forward passes and other plays, and, on nearly every occasion, run and pick the ball out of the hands of the Spokane players, as they would a bunch of grapes hanging on an arbor over their heads. The game was barely saved for Spokane by a score of 6 to 4, and the individual players were roasted for the fault of Coach Kennedy, who instructed Captain Rice to play the way he did.

"We were told that this was done because players from the Seattle teams were in the grand stand, and they were afraid that they would get on to the plays, but that at the next game with Lincoln team of Seattle we should see something. We certainly saw it all right. We saw our players go in there and play old line football, just as they did in the game before.

fore. We saw the Seattle men, about the equal of Spokane in weight, hold their line and in addition use the head formation, which a competent coach had given them, to beat our team with. The forward pass was put into football to eliminate the possibilities of injuries, but instead of using it the team were instructed to use the old football methods and either kick or rush their opponents. What was the consequences? Defeat and injury?

"Now look at the list of injured in the two games, all of whom were splendid, important players: Mohr, ankle sprained; Prichard, leg broken; McKensie, blood poison from injuries; Theiss, injured hand with proud flesh on it; Feibeger, back and head hurt; DeWitt, both legs badly sprained and head injured; Captain Rice, collarbone broken.

"Not only are these men not well at the present time, but Coach Kennedy is taking a lot of players to Seattle to play one of the most important games, with what we consider one of our strongest opponents, who are practically a lot of cripples. The statement that 'If Broadway wins there will be no excuse; it will be because they are the better team' is absolutely a misstatement of facts, though we believe it is unintentional. If our team wins, it will be a wonder, but they are going to try to, because they have that splendid Spokane spirit and grit that overcomes all difficulties, and always makes a success out of a possible failure.

"It is right that the public should know these conditions as they really exist, and the responsibility should be placed where it belongs; that Coach Kennedy and not the individual players of the team should be given credit for the mistakes. The coach, as the public is well aware, is all supreme, and the captain and the players of the team are absolutely required to take their instructions from him. We people in Spokane are proud of our team, and we would congratulate any team in the country that would beat them, because they were a better team, but we hate to see a 'best' team beaten by inferior players, who win because they have better instructions. There is no excuse for this, for in the beginning of the season the players objected to having Mr. Kennedy for coach, but were overruled by the management, and so the coach has lacked the confidence of his team, though they have played the best they could in the midst of continued injuries, injured players being even desirous of remaining in the game, when they were unfit for it. The judgment of the players has been justified. Kennedy, the coach, either lacks the knowledge or has never shown it. By his methods he is mainly responsible for the injuries of his players. He had the best material in the whole country to work with, and yet only won the Tacoma game by a score of 6 to 4 and was beaten by Seattle, 10 to 5. Both of these games should have been won hands down, and would have been had the team had the proper coaching.

"There is no excuse for this, as the town is full of coaches from whom to draw from. They could have even been called in to assist Mr. Kennedy, if necessary. We had in town Mr. Cook, Mr. Varnell and Kienholz, the latter himself connected with the high school, any one or all of whom, I am sure, would have been glad to have helped Spokane on to victory. What we need is fair play, from our friends of the press in general, and hope we will get it in the future."

## U. S. SUBMARINES DARING CRUISERS SNOWSTORM ON TOP



AT THE TOP THE VIPER; BELOW THE TARANTULA, AND THE ROUTE THEY WILL TAKE ON OCEAN TRIP.

WASHINGTON, Nov. 12.—An adventure watched with interest by the navy officials and by thousands throughout the country is the cruise of four submarines from Philadelphia to Charleston, S. C. The boats are the Tarantula, Viper, Cuttlefish and Octopus. The three first named were built in 1905, are 81 feet long and the tonnage of each is 170. The Octopus was built a year later than the others, has a tonnage of 273 and is 106 feet long. They are credited with a cruising radius of 500 knots at the rate of nine knots an hour.

The distance the submarines have to travel, 400 miles, is the longest ever undertaken by craft of that class in the American navy. If their recent experience is to be repeated they will have a long, hard trip. In the voyage from New York to Philadelphia they became separated in a heavy storm and the men were kept below decks and unable to sleep for two days. When found by the Scorpion, which was attached to the fleet as tender and supply ship, the men were completely exhausted. Last winter the boats made a trip along the coast and the men suffered severely from the cold. They were obliged to be constantly on their guard to avoid being frost bitten. That trip served to give the submarine the name of "icebox" as a winter cruiser.

## PACIFIC COAST IN CABINET

WASHINGTON, Nov. 12.—The chances of two western men for places on Taft's cabinet are being discussed by the politicians here. The name of Richard Ballinger of Seattle, former commissioner of the land office of Washington is being urged for secretary of commerce and labor. George A. Knight of California is mentioned for a place on the cabinet.

It is intimated that John Hayes Hammond, the mining expert, is after the commerce and labor portfolio.

## KING PETER



Balkan troubles are quiet at present, but European monarchs are still keeping their eyes on King Peter of Serbia, whose people are anxious to fight somebody.

## HELD FOR TRIAL

Vito Salvaggio, a son of sunny Italy, has been remanded to the superior court by order of Justice J. A. Neville of Deer Park, before whom Salvaggio was arraigned for breaking into a tool house on the premises of Rutgers Van Der Haek.

Snowstorm made a record price, touching \$1.72 and closing strong, but buying is from a source that would indicate that insiders are picking up the stock.

The weakness in Monitor is rather disconcerting in view of the excellent reports coming from the property. Rambler-Cariboo was in excellent demand, as was Rex. The rest of the list was somewhat neglected.

Nothing particularly new developed at the annual meeting of the Kendall, the same officers being re-elected. The annual statement relative to developments at the

	Bid.	Asked.
Alameda	.02½	.03½
Alhambra	.10	.20
Ambergris	.12	.15½
Bell	.05½	.08½
Bullion	.04½	.06
Charles Dickens	.01	.01
Copper King	.02	.02½
Evolution	.02½	.03½
Gertie	.02½	.03½
Happy Day	.02	.02½
Hecla	3.30	...
Holden Gold & Copper	.10½	.15
Humming Bird	.05½	.06½
Hypoheek	.01	.01½
Idaho Giant	.03	.04
Lucky Calumet	.03	.03½
Mineral Farm	.01	.02
Missoula Copper	.02½	.03½
Monitor	.20	.40
Moonlight	.02½	.03½
Nabob	.02½	.03
Oom Paul	.04	.06
Panhandle Smelter	.04½	.05
Park Copper	.00½	.02
Reindeer	.01½	.02½
Rex	.08	.09½
Snowshoe	.05½	.06½
Snowstorm	1.71	1.72
Sonora	.02½	.04
Stewart	.65	.85
Tamarack & Chesapeake	.50	.85
Wander	.02	.02½

## BRITISH COLUMBIA.

Canadian Con. Smelters	70.00	76.00
Dominion Copper	.80	1.00
Granby Smelter	95.00	105.00
International Coal & Coke	.59	.64
Rambler Cariboo	.16½	.20

## EASTERN MARKETS

(Furnished by Walter J. Nicholls & Co.)  
After early weakness the London market has hardened in Americans. Coppers are the favorites. A good authority says looks for 16 cent copper in the next 60 days. Plenty of strength was evidenced in the New York market at the opening, and especially was this true of the low priced issues. There has been a period of such marking up in Union Pacific, Southern Pacific, St. Paul, Amalgamated and smelters that these will probably do well to retain their present levels for the next week.

The consensus of opinion seems to be that the market manipulators will take the cheap ones in hand in order to steady the general market. Reports from the Argentine continue bad, and if true Chicago wheat will probably sell much higher than at present. Some of the largest houses are predicting that May wheat will cross \$1.10 in a few days, with possibilities of much higher prices if the drought continues in Argentine.

Regular dividend declared on Chesapeake & Ohio. An initial dividend of 2 per cent has been declared on Colorado Southern.

## U. S. Government Bonds.

	Bid.	Asked.
U. S. 2s registered	103½	104
U. S. 2s coupon	104	...
U. S. 3s registered	100¼	100½
U. S. 3s coupon	100¼	101¼
U. S. 3s small bonds	100	...
U. S. 4s registered	120¼	121
U. S. 4s coupon	121	...
Panama Canal 2s	102¼	102½
Dist. Columbia 3-65s	110	...

## Chicago Grain Market

CHICAGO, Nov. 12.—It is figured that the bull interests have bought 17,000,000 to 18,000,000 bushels of wheat. All local interests are now friendly to the bull side, especially on breaks, but there are a few bears who for the time being find themselves alone. Short sales of corn are being advocated for a long pull by the bear leaders. Winter wheat still needing rain, but the situation is improved and not discouraging. Some of the area westward is in good condition now. Corn husking returns reflect a yield about up to expectations. Liverpool close—Wheat: ¾ to 1 lower; corn, ¾ lower.

Wheat — Close: December, \$1.03½; May, \$1.07½; July, \$1.01½. Corn—Close: December, 62½c; May, 62½c; July, 61½c.

Oats—Close: December, 49c; May, 51c; July, 46½c.

The drought continues in southern Argentine districts and the continuance of same will cause increased damage to the wheat crop. The surplus still available for export amounts to 10,000,000 bushels.

## FRIGHT RENDERS HER MUTE

EVANSVILLE, Ind., Nov. 12.—Frightened by her narrow escape from a burning building, Miss Clara Kappler has been rendered a mute. Doctors say she may never recover the use of her voice.



## Exceptional Millinery Bargains at the Half-Price Thanksgiving Sale

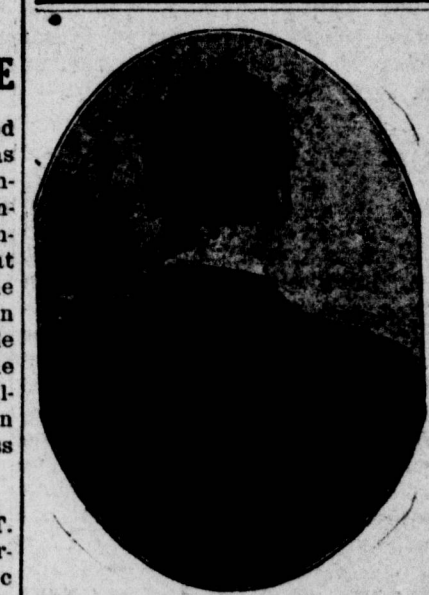
To reduce our large stock of pattern hats, shapes and fancy feathers, we are offering extraordinary inducements to the people of Spokane. Women who recognize style and value are eagerly picking up these bargains.

The best are going fast, so get your hat before it is gone. Don't forget, from now until Thanksgiving eve, up to date millinery at one-half saving from regular price.

Yours to please

## Tyler's Style Shop

822 Riverside Avenue



## Meet Me Face to Face

A little daughter arrived at the home of Mr. and Mrs. Arthur J. Brown, 229 Knox avenue, last week.

## THE TIME FOR THE GRIP

Is the time when it can be selected of the best quality at the cheapest price. We have a full line of solid leather grips, handbags, dress suitcases, trunks, sample cases, purses, pocketbooks and everything in leather goods for a traveling outfit. Made of the best materials by the most skilled workmen, yet low in price.

GARLAND, McFARLIN & CO., 819 Riverside Ave. Main 8558.

## MacKenzie Fuel Co.

Best Grades Wyoming Coal and Fine Dry Wood  
Telephone Maxwell 236

## Sullivan

Main 14

## Walter J. Nicholls & Co.

112 WALL ST. PHONE 25

CORRESPONDENTS  
LOGAN & BRYAN

STOCKS BONDS COTTON  
GRAIN MINING STOCKS  
PRIVATE LEASED WIRES

## Business Men's Lunch

11:30 TO 1:30 P. M.

## Imperial Bar

Columbia Bldg., First and Howard  
TOM WILLIAMS

## HAVE YOUR SHOES REPAIRED

IN THE NEW WAY.

Women's half soles sewed for 50c.

Men's half soles sewed for 75c.

Phone 1535 and we will call for and deliver your repairing.

LE CLAIRE SHOE CO.

823 Riverside.

Wanted—Boys to sell The Press on the street; can make good money. See Gates at The Press, 616 Front avenue.

Spokane Press, 25 cents a month.

## SUNDAY, NOV. 15th

Come out and see the beautiful

## WEBSTER ADDITION

We have just 21 lots which we will close out at half their value. These lots are 50 foot frontage, 120 feet deep, 16 ft. alleys. Only 12 lots in a block and every street 75 feet wide. These lots overlook the Spokane river and the army post. They are almost a dead level. They adjoin Audubon Park Addition and Audubon Park of about 30 acres. They also adjoin Lincoln Park, which is in the addition.

These lots will be sold on the very easy terms of \$10.00 down and \$10.00 a month at about one-half their value. As there are only 21 lots left come out early Sunday. They will not last long.

Salesmen will be on the ground to show you the property. Take MAXWELL AND NORTHWEST BOULEVARD line, which runs through the center of the addition. Remember, this is inside property, with 15 minute car service.

## Byrne Investment Co., Inc.

PATRICK S. BYRNE, President. 318 HYDE BLOCK.

Office Hours—8:30 a. m. to 6:30 p. m. Saturdays to 5:30 p. m.

## THE FOOTBALL GIRL RULES



## DAUGHTER SUSPECTS FATHER'S MARRIAGE

A matter which may reach the courts eventually was brought to light yesterday by Mrs. Ida Erickson, daughter of Isaac Isaacson, wealthy rancher near Hillyard, following his disappearance and subsequent marriage to Mrs. Ida Hoyt. Mrs. Erickson yesterday informed the police of the disappearance of her father and that he was last seen with J. McElroy, W. W. P. agent in Hillyard. Isaacson is feeble minded and Mrs. Erickson claims that Mr. McElroy and Mrs. Hoyt used undue efforts to bring about the marriage. Mrs. Hoyt is a comely widow of White Bluff prairie.

The police have not been officially complained to. Isaacson is owner of land near Hillyard worth several thousand dollars. He disappeared from his home last Monday and was last seen in company of McElroy. He was married on Monday.

## The Best Buy on the Market

## NORTH MONROE ADDITION

Will be on Sale Saturday the 14th  
Large Lots \$150 Up On Very Easy Terms. Watch for further Announcement

Phone 2299 J. W. OSBORNE 317 Rookery