

**JOINT DISTRIBUTION COMMITTEE.**

(Continued from Page 4).

fering should be undertaken on as broad a scale as is possible.

Those who are sufficiently fortunate to be living in this country have a natural desire to give from their means to those who are less happily situated in the home land, and I feel that a great work is being done by the establishment of a means of allowing them to send these remittances without cost to themselves, thus insuring the largest possible payment abroad against the amounts entrusted to your care. That the need of these individual remittances is being recognized more and more, is evidenced by the very large increase in applications for this service which we are receiving, not only in New York, but from all over the country. This is, of course, particularly apparent here in this city. At the office that our committee has recently established at 98 Second Avenue, we received one day this week applications for remittances from very nearly 300 different individuals, in amounts ranging from \$1.00 or \$2.00 to \$125, the aggregate making quite a considerable sum.

During the last year or five months, the Joint Distribution Committee has forwarded for general relief abroad, money, clothing, food and medical supplies to an amount which approximates \$7,000,000, and contributions on a large scale to the funds being collected by the different committees, are, of course, not only welcome, but absolutely necessary. Beyond this, however, I feel most strongly that those in this country who are able to do so, should receive every encouragement to relieve, by means of individual remittances, the wants of their less fortunate relatives and friends in the stricken countries of Europe.

If there is anything that I can do to further facilitate the work of your committee in Chicago, please command me.

Yours very truly,

ARTHUR LEHMAN,

Treasurer, Joint Distribution Committee.

RABBI N. GERSTEIN.

With the loss of Rabbi N. Gerstein, the Jewish community in San Antonio has lost one of their very best true conservative Jewish rabbis who sincerely represented their community with all the sincerity that a true Jewish rabbi could have.

His untimely death is a great loss for the communities in the south and for the Jewish people in America in general. It is a well known fact that a man of this caliber, educated in several languages, having a thorough knowledge of the Talmud and a fluent orator in English, Hebrew and Yiddish, wonderful personality and as young as he was, this type of young man is very hard to be replaced and, therefore, the loss of such a man is very great to the Jewish community.

The writer of these lines had the pleasure of knowing Rabbi Gerstein from the first day he arrived in Texas; that is when he was called to accept the position as Rabbi and Superintendent of the Fort Worth Hebrew School and I may say that during his stay in our city we were true friends and when he left our city our friendship had never ceased. When the sad news came to our Jewish community we were shocked and we could hardly believe that such a calamity had hap-

pened, but as the Talmud says, that when they break you the news of death always believe it and to my sorrow it was true.

To his dear wife and beloved children my sympathy goes out and we hope that God Almighty will strengthen the widow and that she shall be able to take care of the children and act as a father and mother to them.

I hope that the Jewish community of San Antonio will show their appreciation to their beloved rabbi and leader and they will see that the name of Rabbi N. Gerstein will always stand before them as a model of Jewish teachers.

ISRAEL N. MEHL.

**GEN. MONASH INVESTED BY THE KING.**

At Buckingham Palace last week the king invested Lieut. General Sir John Monash with the insignia of Knight Grand Cross of the Order of St. Michael and St. George, and Mrs. Vera Rubenstein, W. R. N. S., as member of the Order of the British Empire.

**PALESTINE.**

M. J. Freedman has gone to St. Louis to do his regular fall buying.

Abe Lowenthal, who was operated (Continued on Page 16)

**Westbrook Hotel**

300 Fire Proof Rooms  
200 Baths  
FORT WORTH, TEXAS

**Lee Huckins**

OKLAHOMA CITY

**The Huckins**

TEXARKANA, TEXAS

THE TASTE TELLS—

**SHAW BROS.****Pure Ice Cream**

ITS QUALITY SUPREME

Lamar 1358

**Ballard Ice and Fuel Company**

WHOLESALE AND RETAIL

Car Lots a Specialty—Ice Capacity 360,000 Pounds Daily. Factory  
Yard: Cor. Daggett & Lake Ave., on Frisco Railway.  
PHONE LAMAR 257 FORT WORTH, TEXAS

MEMBERS ILLINOIS, CENTRAL, NEW YORK, SOUTHERN AND PACIFIC  
COAST WAREHOUSEMAN'S ASSOCIATIONS

Lamar 187

BINYON O'KEEFE  
FIREPROOF STORAGE CO.

Office and Warehouse: 7th and Calhoun FORT WORTH, TEXAS

**American Exchange National Bank**

OF DALLAS

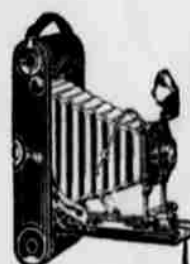
Capital, Surplus and Profits  
\$3,200,000

Assets Over \$28,000,000

OLD, STRONG, RELIABLE

Conservative, Yet Liberal

Accounts Solicited on Favorable Terms

**FILMS**

Finishing Supplies

602

Houston

**BLESSING PHOTO SUPPLY COMPANY****LEXINGTON**

"MINUTE MAN SIX"

**WORLD'S FASHION CAR**

BEFORE YOU BUY A NEW CAR, SEE THE WONDERFUL  
LEXINGTON DEMONSTRATED AND GIVE IT  
A CAREFUL CONSIDERATION

**HALL MOTOR CAR CO.**

PHONE LAMAR 443

Corner Second and Throckmorton Sts.

FORT WORTH, TEXAS

BUY IT AT

**RENFRO'S, 4 Busy Rexall Drug Stores****Firestone**

Tires, Tubes and Accessories

**Texas Tire & Rubber Co.** Distributors

3d and Houston. Lamar 1451