

THE JURY DISAGREES

Cannot Reach a Verdict in
Shaller Case in Common
Pleas Court.

HAMDENITES MUST PAY

Railroad Settles Grays' Suits Out of
Court—News of the Pro-
bate Court.

Yesterday the jury in the suit of Arnold Shaller of Meriden, against Mrs. Della Shaller, also of the Silver City, which action was tried in the common pleas court, reported that it could not agree. The jury stood nine to three in favor of the plaintiff, it is said. The jury retired last Thursday afternoon, when the case was completed after a two days' trial, and Judge Wolfe excused them until yesterday, upon their stating that they were undecided.

Attorney Fitzgerald & Walsh, representing the defendant and Attorney Mueller and Asher, acting for the plaintiff, had hoped that they would come to an agreement today but after they were again given the case, they were unable to reach a decision. The jury retired at 10 o'clock and announced its inability to reach a conclusion at noon.

The suit was over a paint bill of \$600.

Sues for Assault.

The cases of Francesco De Natale vs. Danals Zooli and Giuseppe Zooli were on trial yesterday before Judge Bennett in the civil side of the court of common pleas. The actions are for \$300 damages against each of the defendants. The plaintiff claims that he was assaulted by the defendants during a picnic at Crescent Park on September 20, 1907. The cases were not finished.

Must Pay Taxes.

As a result of a campaign that has been started by Tax Collector Kenyon of Hamden to make delinquents pay their military tax of \$2 to the town, 22 men have been arrested and arraigned in the Hamden town court. Of that number 18 were ordered to pay the tax and in addition settle the costs which range from \$5 to \$8 a case according to the distance the Hamden police had to travel to bring them in. The alternative to those who would

not pay the tax and costs in each case is to go to jail and work it out. Those who were ordered to pay up last evening by Judge Cook out of the first batch brought before him are: Morris Fitzgerald, George C. Rhett, Joseph Richardson, Ralph Bissell, Derrick Mochan, John P. Nolan, C. S. Salovey, Henry Minahan, Ralph C. McLean, Antonio Lantillo, Eugene Bartholomew, John H. Barton, Ermonie Shilstone, Edward G. Greenleaf, Frank Humiston, Jacob Jensen, Charles J. Kealey and John Kimler. The latter is the proprietor of Schuetzen park.

Scholz Estate.

The inventory on the estate of the late Julius Scholz, who conducted a saloon at 253 Campbell avenue, was filed in the probate court yesterday morning. For the removal of the executor, Helena Ives, a daughter. The estate totals to \$17,722.64, and is divided as follows: Real property, \$12,829; personal property, \$1,802.64, and choses in action, \$100. The bulk of the property is in real estate and the saloon contents. The real estate is given as follows: Campbell avenue, \$2,000; \$3,500; \$4,400 and \$3,200; Atwater street, \$270, and Giles street, Hamden, \$150.

Railroad Settles.

The suit of Clifford E. Champlin against the New Haven road has been settled out of court and this ends the most important suit of the lot brought by members of the New Haven Grays against the railroad on account of injuries suffered in the collision at Union City on March 1, 1907. The Champlin suit was for \$25,000. The road has settled it by paying a substantial sum. The case was listed for trial yesterday in the superior court and was erased from the docket.

In the accident Champlin was thrown through the front of the car and out onto the tracks. He suffered a broken shoulder and many other injuries. For weeks his life hung in the balance. He now has a crooked arm which cannot be brought back to place. He was the bugler of the Grays. At the time of the accident he lived in Branford. He now resides in New Haven. Judge Tyner was his counsel.

All of the several suits brought by members of the Grays against the railroad have now been settled except three. The two men who were the most injured have settled their cases, they being Champlin and Russell.

The cases still pending, but which it is believed, will be settled out of court, are the cases of Hopkins, Fitch and Crabbs.

Another case listed for trial yesterday and which was settled out of court was the case of Bolser Pitt of Torrington against the New Haven road. It was a suit for \$25,000 damages. The plaintiff was injured in the collision between two trains at the Allington switch on September 23, 1907. He suffered injuries which caused a chronic disease.

Attorneys T. H. Russell and McClure were counsel for the plaintiff.

Attorney Louis E. Jacobs yesterday served notice upon the Connecticut Co. that he would pay out an injunction to restrain the trolley cars from going over the switch in front of his house at 259 Chapel street, unless the company does something to lessen the jarring of his house caused by the big double truck cars making the crossover.

BURIED CITY DISCOVERED.

Lies Beneath University of California and Antedates Columbus.

Berkeley, Cal., May 26.—Buried a few feet under the classic soil of the University of California campus lies a city of the stone age, whose massive walls respond to the instruments of the members of the Berkeley Society for Psychological Research and show their well-defined locations, according to the investigation made by Prof. Joseph Veril, president of the local psychological society and other members.

The series of investigations to find the lines of the buried city, which antedates by thousands of years the time of Columbus, have been carried on for several months. It is likely that excavation work will be begun at once along scientific lines.

White Dresses and Goods for Children.

The matter of a graduation dress is easily solved if you come to us. Misses' gowns, 2 to 16 years; ladies' and children's white hosiery; misses' white skirts; white silk petticoats; five-year-old children's white dresses.

Cohane
150
Orange St.
TELEPHONE 2042-5.
Opposite Woman's Exchange.

YOUR PICK 39c.

Manufacturer's Sale of
SAMPLE
POCKET KNIVES
FIFTY VARIETIES,
LADIES' AND GENTLEMEN'S,
WORTH 75c TO \$1.00.
Sale Ends May 30th.
BASSETT GUN STORE
5 CHURCH STREET.

COYNE BROS. 250 Blatchley Ave.

Concrete and Cement Walks, Floors, Drives, etc., Laid and Repaired. Roofing a Specialty.
Brick and Flag Walks Repaired. Tel. 3525. Superior Work Guaranteed



Through A Shop Window

A longnet chain of dull silver is set here and there with amethysts cut oblong shape.

Bright colored crotonne is used as a border for a linen parasol. The stick is of white wood.

Among the lovely materials for evening wear is charmeuse crepe, which is as substantial as satin and yet as soft as chiffon.

A quaint parasol of corn linen has a heavily embroidered border of Egyptian design and rich color scheme. The handle is rather unusual, with a sphinx in ivory resting on a block of polished wood suggesting a pyramid.

The little black velvet ribbon worn around the neck is still in good style. An unusually pretty arrangement of this collar finish was noticed recently on a smartly dressed girl. Her velvet ribbon was a little wider than the ordinary narrow band, being fully an inch in width. It was worn at the top of her lingerie collar and just beneath the little frill of lace which came next to her face. It was caught at the side of the front, this wide band of black velvet ribbon with a lovely little silver buckle.

Jet occupies a very conspicuous place among the trimming materials. It is used in long strings made of beads in graduated sizes, and is particularly effective for small hats trimmed with military pompoms of cut ostrich or heron, giving a delightfully jaunty air to these otherwise rather sober models. Jet pins in large ball-shape are equally in favor, also agates and cabochons made of this lustrous material. Silver, gold and enameled hat ornaments in the shape of pins, buckles, cabochons, etc., are lavishly employed on this season's hats, as are motives made of gold or silver embroidered and appliqued in tuile in all lead shades. Full ruffles of tulle of two or more colors wound on wire are used as substitutes for aligrettes—Vogues.

Priscilla
BRIEF MENTION.
High water to-day at 9:06 p. m.

The supper to be served in Morris Cove chapel Thursday evening will be ready at 6:30 and the entertainment will follow. A large attendance is expected.

J. M. Tarr, the weather forecaster, will give an illustrated lecture on "Tornadoes" before the Berkeley Men's club at the City Mission hall, No. 201 Orange street, this evening at 8 o'clock. A large number of stereopticon views will be shown.

D. E. Brewster, one of the inventors of the amusement device "The Ticker," was at Savin Rock, yesterday, looking over that uproarious creation. He made one or two suggestions and several minor changes will be made in the construction which, if such a thing is possible, will improve the "ride of laughs."

OPPOSE D'AMATO'S SALOON.

St. Paul's Church and Y. W. C. A. Against It.

The county commissioners yesterday heard the remonstrance of St. Paul's church and the Young Women's Christian association against the application of Luigi D'Amato, who wants to transfer his license from 53 Collis street to 188 Wooster street. Last year he put in an application for a saloon at Wooster and Olive streets and St. Paul's church then objected and the commissioners sustained the objection.

Among the witnesses for the remonstrants were the Rev. James DeWolf Perry, jr., rector of St. Paul's church; the Rev. Franklin Knight, assistant pastor of the church, and former Postmaster B. R. English. Several women interested in the Y. W. C. A. also testified.

The objection was against the place. The witnesses said there were saloons enough in the locality already.

Attorney Fitzgerald represented the remonstrants and Attorney Howard C. Webb was counsel for the applicant. They had frequent tilts over the testimony.

BLACKMAILER SENT UP.

New London, May 26.—In the superior court this morning, Judge Case sentenced Edward L. Weeks of Versailles to spend not less than two nor more than three years in state prison for blackmailing Mary E. Archer of Versailles. Before sentence was pronounced Weeks addressed the court in his own behalf for about a quarter of an hour, asking leniency on the ground that his punishment would fall more heavily on his wife and daughter than it would on him.

BOOKMAKING POLICEMAN OUT.

New York, May 26.—Second Deputy Police Commissioner Hughes today revoked the permit of the special patrolman in Broad street who was seen to take money from Patrolman Edward O'Neil, the traffic squad officer, whom the Evening Mail exposed after one of its reporters had been setting with him for three days on the streets.

GOVERNOR TO BE THERE.

Will Attend Annual Meeting of Anti-Tuberculosis Association To-day.
Governor Woodruff is expected to attend the annual meeting of the New

The EDW. MALLEY & Co.

The Metropolitan Store of New Haven.

The EDW. MALLEY & Co.

Afternoon Tea Served 3 to 5 P. M., Summer Furniture "First View", on the Second Floor.



Decoration Day Flags, \$1.00 to \$10.00.

Made of All Wool Navy Bunting, stripes and seams double sewed, stars sewed on both sides; strong canvas heading, finished in best possible manner. We have them from 2 x 3 ft. up to 10 x 15 ft.

Flags 2c to 50c a doz.

Printed Muslin Flags, mounted on sticks, in all sizes, fast colors. Now in great demand for decorating seashore cottages and hotels.

Poles and Brackets for Flag Holders At Special Low Prices.



Three Day Sale Summer Home Supplies

That Hits the Nail Right on the Head!

"WHEN YOU DO do a thing—do it right!" The biggest and best base of country home-fitting and housekeeping supplies in the State of Connecticut, at your especial service for these three days: WEDNESDAY, THURSDAY, FRIDAY, on a blanket bargain-schedule covering every equipment-need from cellar to attic. Look well to such unusual money-savings on wares of such worth! Profit wisely by them, oh ye shrewd "go away" housewives. Time is short (three days) and bargains fleeting.

Garden Needs.

Grass Seeds, Flower Seeds, 10c a dozen.

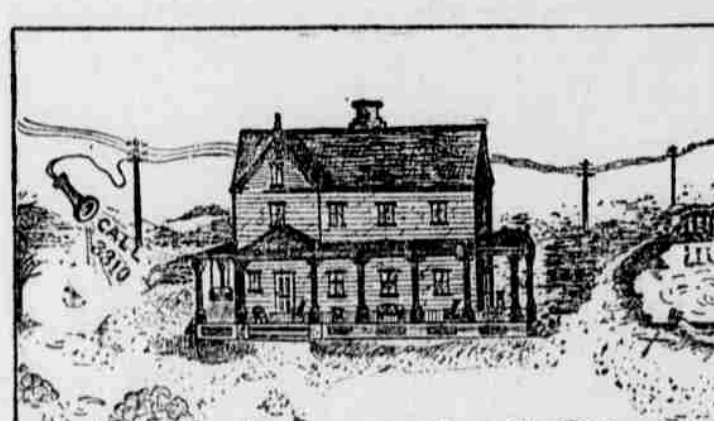
Central Park Lawn Seed, regular 15c, At 10c.

High grade Lawn Mowers, self-sharpening, self-adjusting good steel blades, regular \$3.50. At \$2.75.

Steel Grass Shears, adjusting pin, regular 15c. At 10c.

Grass Sickle, regular 15c, At 10c.

Garden Rakes, regular 25c, At 15c.



House Needs.

Mirrors, regular 18c, At 13c.

Wood Palis, regular 18c, At 13c.

Towel Racks, large size, cherry wood, regular 19c, At 10c.

Mission Coat and Hat Racks, with framed picture in center, large metal hooks; regular 49c. At 35c.

Best proof fancy Knife, Fork and Spoon Tray, with handle; regular 16c. At 5c.

50 ft. Waterproof Cotton Clothes Line, will not sink or stretch; regular 39c. At 29c.

Ideal Hardwood Tooth Picks, regular 5c pack. At Two for 5c.

Bird Gravel, regular 5c, At Three for 10c.

Cottage Bed Needs.

Fleeced Blankets.

Medium weight, just the kind for summer use; in White and Gray with Pink or Blue borders.

10-4 size, for single beds, At 65c.

11-4 size, for double beds, At 85c.

12-4 size, for extra size beds, At \$1.19.

Summer Comfortables \$1 to \$3.

Large assortment of light and dark grounds, filled with odorless White Cotton Bating, tufted and finished in the best manner; covering of pretty Printed Silkline and Cambrics. At \$1.00 to \$3.00.

Crochet Bed Spreads 79c to \$2.50

White and colors, hemmed or fringed, cut corners. Special: A full size White Spread for 79c.

Bed Sheets 42c and 49c.

Made of linen finished cotton, good substantial weight, seamed in center. Size 72x90, 42c, worth 50c; Size 81x90, 49c, worth 60c.

Pillow Cases 11c and 12 1-2c.

Made of good cotton; 42x36 11c; 45x36 12 1-2c.



Lawn Swings \$3.75.

8 ft. high, 4 ft. wide, 9 ft. spread, size of seat 18 in. wide, 14 in. deep. A comfortable Swing for two occupants. Hangers, cross pieces and tops painted. Regular price \$4.95.

Cottage Home Fittings.

Swiss Ruffled Curtains 69c pr.

Good quality Swiss, with four rows of tucks, Battenberg lace insertions and full ruffle. 2 1-4 yds. long and full width. Regular price \$1.00 a pair. At 69c pair.

China Matting 35c a yard,

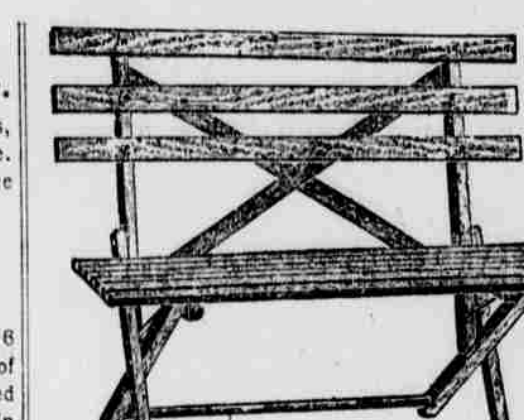
Roll of 40 yards, \$12.75.

Superior China Matting, guaranteed 116 warps to the yard; the most durable grade of Matting made in China. Every yard inspected before accepted for shipment to us. Fine pin checks and other dainty styles, tasteful colorings. Sold as high as 50c a yard.

China Matting 25c a yard,

Roll of 40 yards, \$8.95.

Weighing from 75 to 85 lbs. to roll of 40 yards, jointless, long straw Matting, tasteful styles. Regular price 30c a yard.



Garden Seat Special 95c.

Like illustration, folding, 42 in. long, made of hardwood, extra heavy oval slats on seat, standards painted green, red or varnished. Regular \$1.25 value.

Cottage Glassware.

Water Sets.

Decorated Thin Blown Glass Water Sets consisting of one Pitcher and six Glasses to match.

Regular \$2.98 set. Sale \$2.25.

Regular \$2.25 set. Sale \$1.75.

Regular \$1.50 set. Sale 98c.

Regular \$1.00 set. Sale 69c.

Table Tumblers.

Heavy Crystal Glass Table Tumblers, just the kind for Hotel and Boarding House. Regular 85c doz. While they last 39c dozen.

Colonial Crystal Glass Water Bottles. Regular 50c each. At 39c.

Colonial Crystal Glass Finger Bowls. Regular \$1.50 dozen. At \$1.10.

Colonial Crystal Glass Berry Bowls. Regular 29c each. At 15c.

Colonial Crystal Glass Compot 10 in. high. Regular 39c. At 25c.

Colonial Crystal Glass Water Pitcher, large size and new shape. Regular 50c. At 39c.

Colonial Crystal Glass Fruit or Ice Cream Sauer. Regular \$1.00 doz. Sale Price 80c dozen.

Colonial Glass Salt and Pepper Shaker with pated tops. Regular 10c each. At 5c.

Pressed Glass Oil or Vinegar Bottles. Regular 25c. At 15c.

Trolley Go-Carts \$1.19.

Folds up quickly; just what you want for short trips to the shore or country. A regular \$2.00 value.

Cottage Kitchen Needs

Three boxes of Bixby's "BBB" Blacking, for 10c. Regular 5c a box.

White Enameled Metal Wash Stand, Wash Basin, Soap Dish, Water Fitcher and Towel Rack, for \$1.49. Regular \$2.00 value.

Florence Automatic Blue Flame Oil Stoves, non-explosive, no smell, no smoke, perfectly safe, a child can use it with perfect safety; two or three burners. Price \$5.50 and up.

Cottage Cutlery.

Set of steel medium Knives and Forks, slightly imperfect. Regular up to \$1.50 set. At 69c.

"Christy" Set consisting of 1 Bread 1 Cake and 1 Paring Knife. Regular 19c set. At 10c.

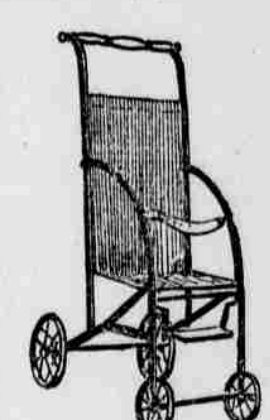
Paring Knives with black wood handle. Regular 5c. At 3c.

Bread Knife, 9 in. blade, and cocobolo handle. Regular 35c. At 25c.

Steel Butcher Knife with wood handle. Regular 20c. At 15c.

8 inch "Christy" Steel Spatula, wood handle. Regular 35c. At 29c.

25 per cent off on all our Carving and Game Sets.



Cottage Linens.

Union Huck Towels of heavy weight, also Turkish Towels, both bleached and unbleached. \$1.20.

Absorbent Roller Toweling 18 in. wide, very serviceable and absorbs water quickly. At 9 1-2c yd.

All Linen Unbleached Crash Toweling, 18 in. wide, good serviceable quality. At 8 1-2c yd.

Turkey Red Table Damask in a variety of good patterns to select from at 25c to 50c yd.

Mercerized Damask, full bleached, 60 in. wide, substantial weight appropriate for ordinary use. Regular 50c value. At 39c.

Napkins, all linen Damask, full bleached, cream bleached; good size. \$1.25, \$1.50, \$1.75 dozen.

Cottage Crockery.

Nine piece Toilet Set, large Ewer and Basin, decorated with flowers; three colors to choose from. Regular value \$2.15. At \$1.65.

Plain White Ewer and Basin, regular 98c set. At 65c.

Plain White Uncovered Chambers, regular 30c. At 19c each.

Plain White Slop Jars, slightly imperfect, regular 98c. At 75c each.

Plain White Tea and Coffee Cups and Saucers, slightly imperfect, regular \$1.20 a dozen. While they last at 48c a dozen.

Plain White St. Denis Cups and Saucers, regular \$1.20 a dozen. At 75c a dozen.

Large size Plain White Plates, regular 75c a dozen. At 48c dozen.

Plain White Tea Plates, regular 65c a dozen. At 40c a dozen.

Plain White Hall Boy Jugs, regular 19c. At 12c each.

Plain White Individual Butters, regular 29c a dozen. At 14c.

Plain White Baker or Round Nappy 7 in., regular 15c. At 8c.

8 in., regular 20c. At 12c.

Plain White Coupe Soup Plates. Regular 75c dozen. At 48c.

Plain White Platters:

6 in. Platters 5c each. Regular 9c

8 in. Platters 7c each. Regular 12c

10 in. Platters 12c each. Regular 19c

12 in. Platters 18c each. Regular 35c

Folks are Picking Up Rare Bargains at the Great Sale of "Phoenix" Auction Ribbons

The EDW. MALLEY & Co.

The Metropolitan Store of New Haven.

The EDW. MALLEY & Co.

Haven County Anti-Tuberculosis association at the Gaylord farm sanatorium in Wallingford this afternoon.

As is well known the governor is much interested in the anti-tuberculosis movement. Dr. J. P. C. Foster,

who is chairman of the anti-tuberculosis commission appointed by the governor, is one of the directors of this association.

Gaylord farm is a very beautiful place at this time of year, and the

trip to the farm makes a very pleasant half day's outing. The train leaves New Haven at 1 o'clock and there will be carriages at the Wallingford station to transport the party to the sanatorium. The afternoon train leaves Wallingford at 4:15 and arrives in New Haven at 4:45.

A large number of New Haven people will go up to the meeting, which promises to be an unusually interesting one. Among those who will probably go from here are Dr. Francis Bacon, Max Adler, Dr. O. T. Osborne, J. Davenport Wheeler and Prof. Irving Fisher.