

A Woman Is Wonderfully Constructed

The delicate structure of a woman's body is a source of wonder to medical men. So complicated are its parts that only the most learned are capable of understanding it. Women do not know themselves. They do know, however, what it means when any of these delicate parts get weak or disordered. They alone know the suffering, the misery, the prostrating effect when the generative system becomes irregular. The disturbance not only robs them of strength and the enjoyment of health, but they have work to do and it must be done in spite of a body that is weak and suffering and a mind that is harassed by the dread of an invalid's fate. Happily, most of these ailments of women are curable and one of the most dependable medicines for the relief of such troubles is **Dr. Simmons Squaw Vine Wine**. It is prepared expressly for the diseases of women. It is a successful medicine. One that builds up the Nervous System and strengthens and regulates the generative organs. It stops the painful symptoms promptly, tones up the nerves, makes the body strong, the digestion good, and restores a feeling of well-being, of power to perform the household work without fatigue. Ailing women should try this remedy. It will give them back the health, strength and vigor of girlhood days.

Sold by Druggists and Dealers. Price \$1.00 Per Bottle.

C. F. SIMMONS MEDICINE CO., ST. LOUIS, MISSOURI

Laurens Drug Co., Laurens, S. C.

CITIZEN OF PROPOSED NEW COUNTY VOICES STRONG OPPOSITION TO IT

Col. T. J. Moore, of Moore's Writes Strong Letter to Spartanburg Herald Pointing Out Fool-Heartedness of New County Movement.

Editor of The Spartanburg Herald:

Having been cut off in the proposed county of Woodruff, I have been led to investigate the running expenses of counties, and the practical effects upon the new county. In my judgment, it is the most unbusinesslike proposition that could have been proposed. It proposes to lay but a very poor county, poorer than Spartanburg county was when it came out of the Confederate war, a county in which the taxation will be enormous, if the same efficiency now prevailing is to be maintained; a county that will start poor, and continue so during the life time of those of us now living, and probably our children after us. It proposes to quit the second wealthiest county in the state; to cut loose from the city of Spartanburg, which now pays nearly half the taxes of the county, and is rapidly growing, and destined to be a large and wealthy city; to take on hand the larger part of the costly bridges of the county, in fact, nearly all of them; to build a courthouse, jail, and other public buildings; to assume its share of the public debt—\$375,000; to keep up a large and expensive road system, with many roads to be laid out to the new courthouse.

Now, I want to show you the absurdity of the proposition. Surely the promoters of the scheme have never investigated the matter fully, and do not know what they are proposing to saddle themselves and the balance of us with.

Now, to understand fully the question, as it is going to take a very large sum to run the county, let me show you what Spartanburg county is now doing—her assessed value and rate of taxation, and compare it with the proposed new county. Of course, the amount of money that can be raised depends on the assessed valuation and the rate of taxation, and to raise a given amount the larger the assessed valuation the less the rate of taxation, and vice versa.

The county of Spartanburg is now assessed at \$19,000,000, and the rate taxation for state and county purposes is 163-4 mills, which a little figuring will show raises a fund of \$318,000. Of this amount 93-4 mills are for state purposes and 7 mills for county purposes. Now the assessment of 7 mills for county purposes is divided as follows, viz.:

Ordinary county, 3-1-2 mills.
Bridges and permanent improvements, 2 mills.

Road tax, 1 mill.

Sinking fund, 1 mill.

Commutation or road taxes in addition.

This 7 mills assessment then raises \$132,000 for county purposes, of which sum \$20 per mile is used on 1,900 miles of roads and bridges, equivalent to \$38,000 each year.

Now let us see how it would stand with the new county if the same rate of taxation should prevail. The taxable value of the new county would be in the neighborhood of \$3,000,000, which I get as follows, viz.: Woodruff township, assessed value at present, as obtained from the county auditor, is \$1,200,456; Cross Anchor township, \$500,000; the balance of the county, \$1,300,000. Total \$3,000,000.

Now supposing that the same rate of taxation will prevail, the 7 mills for county purposes, to say nothing of state taxes, will raise \$21,000. Now, does it look reasonable that a county can be run on \$21,000? It will require nearly that sum to keep up the roads and bridges, for if Spartanburg county has 1,900 miles with an area of 878 square miles, it is reasonable to suppose that the new county of 400 square miles will have about one-half as much, or say, about 950 miles. If \$20 a mile should be expended as is now done in Spartanburg county it would take \$19,000 to keep up the roads and bridges, as well as is now done, leaving just \$2,000 on which to run the county. What then about court expenses, pay of public officers, the building of public

houses, as courthouse, jail, poor-house, etc.? Why the courthouse at Spartanburg must have cost \$50,000 or \$60,000; the jail half as much, and then the pay of public officials. Just think of it; Auditor, \$2,000; school commissioner, \$1,000; sheriff, \$2,500; supervisor, \$1,500; clerk, \$720; coronator, \$600; treasurer, \$1,500; the other officers being supported by fees.

This pay of public officials is then about one-half of the pitiful \$21,000 raised by the new county. The court expenses of Spartanburg county are more than the new county would raise in all.

The more I think about it the more preposterous it appears to be. Let us take a view of the bridge question. It is proposed to saddle us with nearly all the costly bridges in the county. Here are some of them, and what they cost, viz.:

Hill's bridge, on Tyger \$9,000
Burnt factory, on Tyger 3,000
Nesbitt's bridge (Tyger) 3,000
Marshy Shoals 2,000
Scott's 1,500
Price's 2,000
Otts Shoals (to build) 2,000
Moore's 1,000
Switzer (S. Tyger) 1,000
Anderson (S. Tyger) 1,000

With several others above that I do not know about.

On Enoree river:

Musgrove's 3,000
Enoree 5,000
Enoree, No. 2 2,000
Kilgore's 1,000
Harris 2,000
Allen's bridge 1,500
Woodruff 3,000
Van Patton's 4,000
Bennett's 2,000
Fowler's 2,000

Besides several others higher up the Tyger and Enoree that I know nothing about, to say nothing of the innumerable smaller bridges over the creeks, as Wards, Dutchman, Cane Creek, the two Fergusons, Jimmies creek, Cedar Shoals, and I know not how many more. Should we have other floods as in 1903 and 1907 the county would be burst wide open. They could not be replaced and resources of the county being too slim. We would have to go back to pole bridges and fords, as in Revolutionary days. What in this world do the promoters of the scheme about the town of Woodruff mean by trying to saddle us with all this expense?

I asked an expert, one versed in running county affairs, roads and bridges, how the new county could keep up its roads and bridges, and his reply was they simply can't do it without enormous taxation, but will have to go back to poor roads, pole bridges, and fords as of old times. It will be remembered the new county will give up its interest in 50 or 60 miles and a great deal of expensive machinery. I would expect the road by my house never to be worked again except with pick and shovel. I thank the Lord I live immediately on the line, and will likely have a good road to Spartanburg.

Some one suggests that to keep up the roads we will have to have a poll tax of \$6 or \$7, as they do in the poor and small counties of North Carolina adjoining us, and my judgment is that this will be the outcome, and when such a tax is levied tenants and factory hands are not going to pay it, but will move out across the line, and then our farms will be in a beautiful shape to pay the other excessive taxation.

One of the promoters of this scheme actually told me that the new county could be run cheaper than was now being done in Spartanburg county, and cited me to Cherokee county as to what can be done. Now, it seems to me that any man of good practical common sense ought to see that it will cost more to run two counties than one, and as for Cherokee county, I was told by one who knows what he was talking about

(Continued on Page Three.)

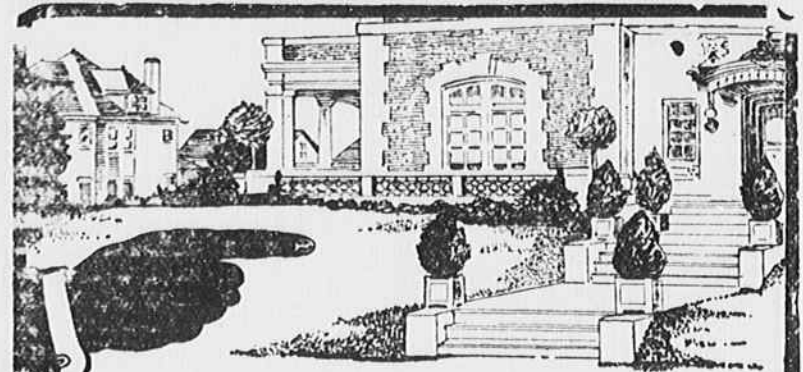
Dependable Drugs!

Drug Store nowadays come pretty near being department stores. What with stationery, brushes, combs, rubber goods, cigars, candy and soda water the prescription case is well nigh snowed under. But, after all, the compounding of physicians' prescriptions is a druggist's real business and we so regard it. Our chief thought and care are given to the prescription department.

POWE DRUG COMPANY

On The Square

Laurens, South Carolina



Complete House Bills

You can choose lumber from our stock to suit the most exacting fancy in building a plain cottage or an imposing mansion.

You can select, not from a meagre variety, but from an immense one which we have built up to meet the constantly increasing demands upon our "complete house bills" department.

Doors, sash, blinds, mouldings, stairs, newel posts, columns, in many designs, all produced by our own designers and workmen.

When you expect to build—bring, mail or send your architect's plans and get our estimates.

"Buy of the Maker"

AUGUSTA LUMBER CO.
AUGUSTA, GA.



FERTILIZER

Is cheaper than labor, land or mules. Increase your fertilizer and decrease the cost of your products.

SCOCO TOP DRESSER

4-7 1/2-4

FOR SIDE APPLICATION.

The Southern Cotton Oil Company

LAURENS OIL MILL

CHARLESTON & WESTERN CAROLINA RAILWAY.

Change in Schedules, effective Sunday, June 8, 1913.

Between Augusta and Spartanburg—Main Line.

4:25 pm	11:00 am	Lv Augusta Ar	12:10 pm	7:05 pm
7:06	1:24	Greenwood	9:25	4:40
7:23	1:42	Coronado	9:08	4:23
7:40	1:58	Waterloo	8:52	4:08
7:56	2:14	Cold Point	8:42	3:59
8:01	2:19	Maddens	8:35	3:52
8:10 pm	2:25 pm	Irby	8:29	
8:23		Lv Laurens Ar	8:20 am	3:40 pm
8:35		Ora	8:03	7:32
8:40	2:50	Lanford	7:56	7:25
8:56	3:02	Enoree	7:51	3:14
9:08		Woodruff	7:35	3:02
9:14		Switzer	7:22	7:04
9:24		Moore's	7:16	6:51
		Roebuck	7:07	6:45
9:40 pm	3:40 pm	Ar Spartanburg Lv	6:50 am	2:25 pm
		Between Laurens and Greenville.		6:20 pm
8:10 pm	3:12 pm	Lv Laurens Ar	8:20 am	1:45 pm
8:22	3:24	Doubling	8:09	1:33
8:28	3:30	Barksdale	8:03	1:29
8:34	3:38	Gray Court	7:57	1:22
8:39	3:43	Owings	7:53	1:17
8:53	3:56	Fountain Inn	7:40	1:03
9:05	4:09	Simpsonville	7:29	12:50
9:16	4:22	Mauldin	7:17	12:38
9:35 pm	4:40 pm	Ar Greenville Lv	7:00 am	12:20 pm

ERNEST WILLIAMS, G. P. A.,
Augusta, Ga.

A. W. ANDERSON, SUPT.,
Augusta, Ga.

Safeguard and Preserve

Your Furs, Blankets, Comforts, Heavy Hangings, Portiers, Carpets, Rugs, Winter Wraps and Clothing by having them thoroughly cleansed by our Special Processes before storing for Summer.

Footer's Dye Works

Cumberland, Md.

Blood Was Wrong

All women, who suffer from the aches and pains, due to female ailments, are urged to try Cardui, the reliable, scientific, tonic remedy, for women. Cardui acts promptly, yet gently, and without bad effects, on the womanly system relieving pain, building up strength, regulating the system, and toning up the nerves. During the past half century, thousands of ladies have written to tell of the quick curative results they obtained, from the use of this well-known medicine.

TAKE CARDUI The Woman's Tonic

Mrs. Jane Callehan suffered from womanly trouble for nearly ten years. In a letter from Whiteville, N. C., she says: "I was not able to do my own housework. My stomach was weak, and my blood was wrong. I had back-ache, and was very weak. I tried several doctors, but they did me no good. I used Cardui for 3 or 4 months, and now I am in the best health I have ever been. I can never praise Cardui enough." It is the best tonic, for women.

Whether seriously sick, or simply weak, try Cardui.

Write for: Ladies' Advisory Dept., Chattanooga Medicine Co., Chattanooga, Tenn., for Special Instructions, and 64-page book, "Home Treatment for Women," sent free. J 18

What

a great improvement would be made in the condition of horses and other animals if just the proper remedy were used when they became ill or injured. If your horse could talk he would ask you not to use any external remedy containing alcohol because it stings and tortures his flesh terribly. Some liniments have alcohol and other fiery ingredients which only inflame the skin and tissue without striking down to where the pain lies. Beware of such liniments. The great humane, quick-action remedy is MEXICAN MUSTANG LINIMENT. Made of oils, without a drop of alcohol or other torturing element, it soaks straight to the bone and muscle. It soothes the wounded parts and is comforting while the healing work is progressing. Mexican Mustang Liniment is what you want because it

Makes

your work lighter, saves your livestock from suffering and keeps them in good trim for work. For all forms of Lameness, Strains, Bruises, Cuts, Burns, Galls and Harness Sores in animals, it is safe and prompt and does not promise what it cannot perform. Mustang Liniment has been doing its wonderful healing work for 65 years. The amount of money it has saved livestock owners is incalculable. One man writes that he was about to kill his valuable horse because badly injured but Mustang Liniment made him well again. A Veterinary tells us he has used Mustang Liniment fifteen years and found it best liniment for cuts, strains, etc. And many others are enthusiastic friends of this tried and true remedy. Now you know just what makes

Horses so Happy.

HE WONDERED WHAT IT IS—TREN SUDDENLY FINDS OUT

